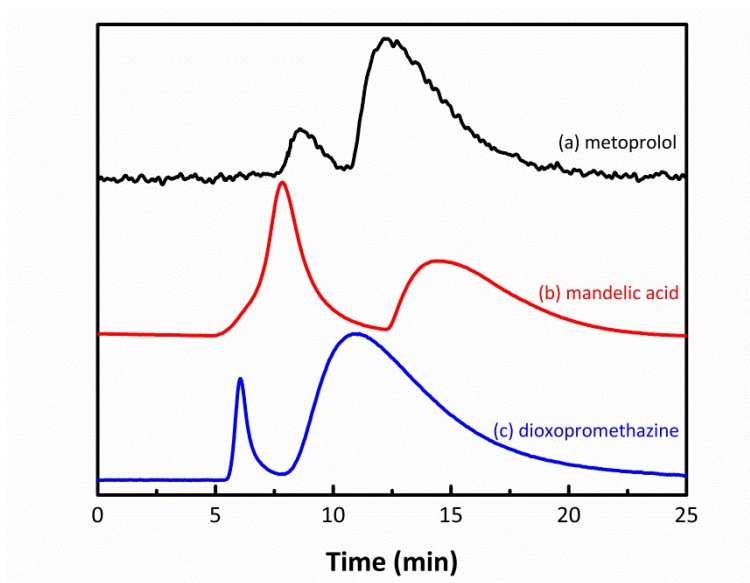


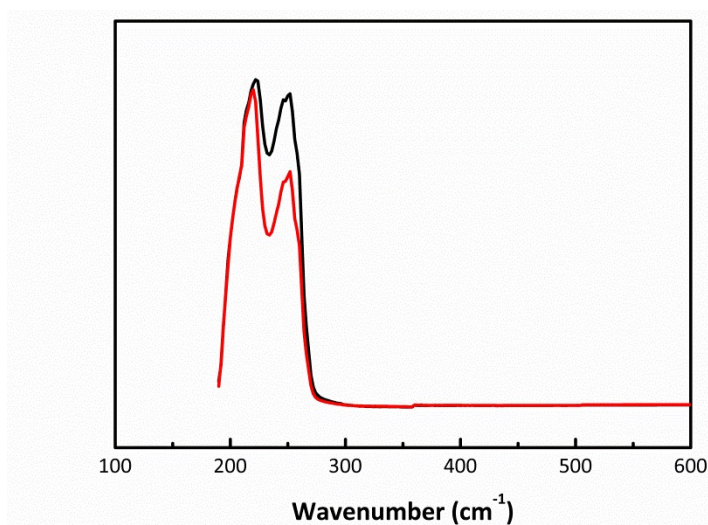
## Light-assisted preparation of cyclodextrin-based chiral stationary phase and its separation performance in liquid chromatography

Qi Tang, Bing Yu, Lilong Gao, Hailin Cong, and Shuai Zhang

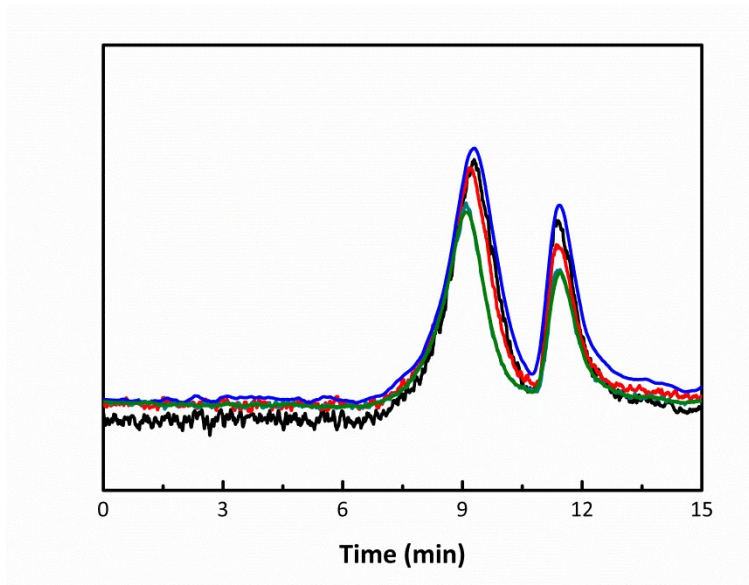
### Electronic Supplementary Information (ESI) for New Journal of Chemistry



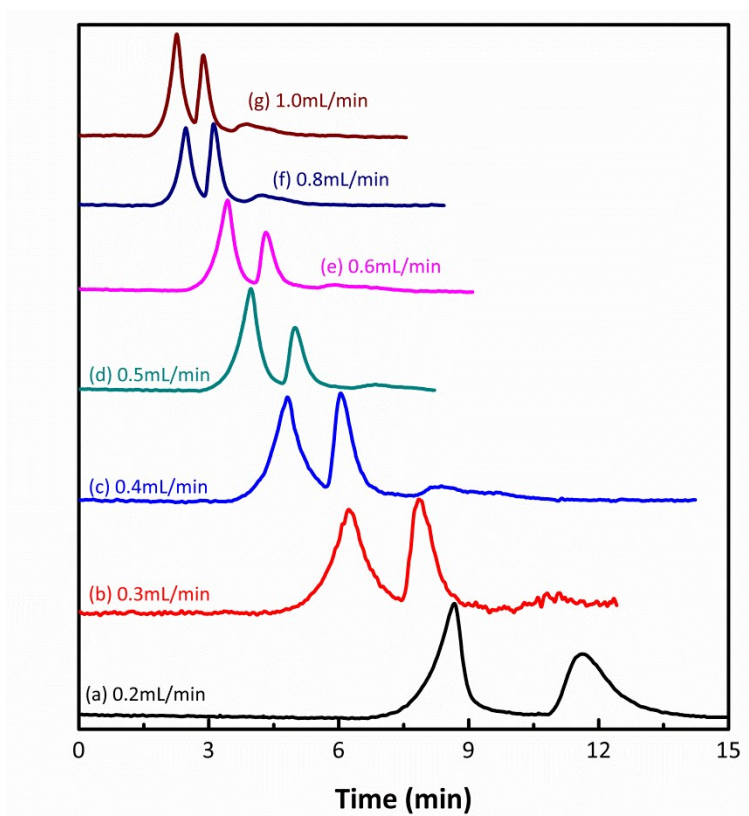
**Figure S1.** Enantiomeric separation of (a) metoprolol, (b) mandelic acid and (c) dioxopromethazine on CD@SiO<sub>2</sub> column (15 cm × 4.6 mm i.d.); mobile phase, MeOH; flow rate, 0.2 mL/min; UV detector, 250 nm; temperature, 25 °C.



**Figure S2.** The UV spectra of chlortrimeton isomers.



**Figure S3.** The batch-to-batch reproducibility of the CD@SiO<sub>2</sub> column. Enantiomeric separation of promethazine on CD@SiO<sub>2</sub> column (15 cm × 4.6 mm i.d.); mobile phase, ACN-H<sub>2</sub>O 7:3 (v/v); flow rate, 0.2 mL/min; UV detector, 250 nm; temperature, 25 °C.



**Figure S4.** Enantiomeric separation of promethazine under different flow rate on CD@SiO<sub>2</sub> column (15 cm × 4.6 mm i.d.); mobile phase, ACN-H<sub>2</sub>O 7:3 (v/v); UV detector, 250 nm; temperature, 25 °C.