

Electronic Supplementary Material (ESI) for New Journal of Chemistry.
This journal is © The Royal Society of Chemistry 2017

Supplementary data

A saccharinate-bridged palladacyclic dimer with Pd-Pd bond: experimental and molecular docking studies of the interaction with DNA and BSA and *in vitro* cytotoxicity activities against human cancer cell lines

Kazem Karami*^a, Moloud Alinaghi^a, Zahra Amirghofran^b, Janusz Lipkowski^c, Amir Abbas Momtazi-borojeni^{d,e}

^aDepartment of Chemistry, Isfahan University of Technology, Isfahan, 84156/83111, Iran

^bImmunology Department, Shiraz University of Medical Sciences, Shiraz 71454, Iran

^cInstitute of Physical Chemistry, Polish Academy of Sciences, Kasprzaka 44/52, 01-224 Warsaw, Poland

^dDepartment of Medical Biotechnology, School of Medicine, Student Research Committee, Mashhad University of Medical Sciences, Mashhad, Iran

^eNanotechnology Research Center, Bu-Ali Research Institute, Mashhad University of Medical Sciences, Mashhad, Iran

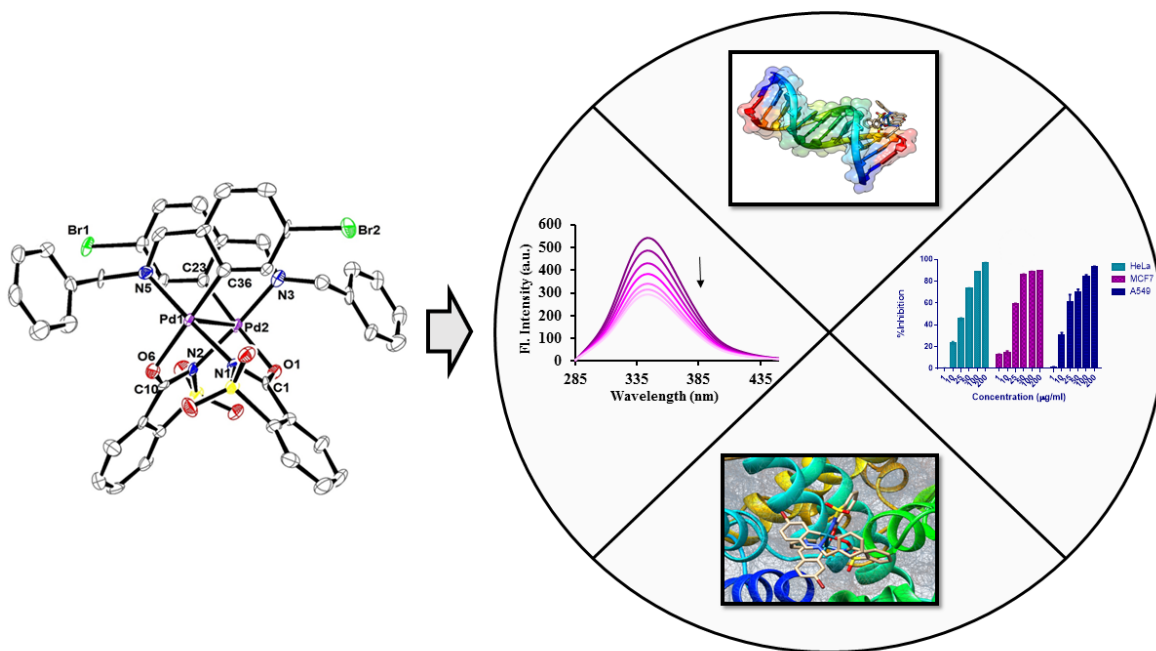


Fig. S1: ^1H NMR spectra of ligand **LH** in $\text{DMSO-}d_6$.

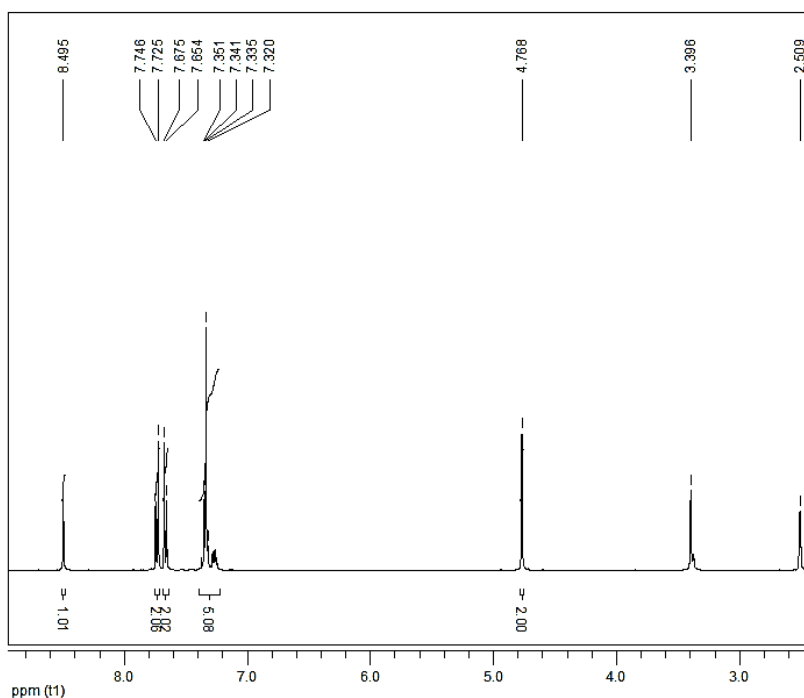


Fig. S2: ^1H NMR spectra of complex **1** in $\text{DMSO-}d_6$.

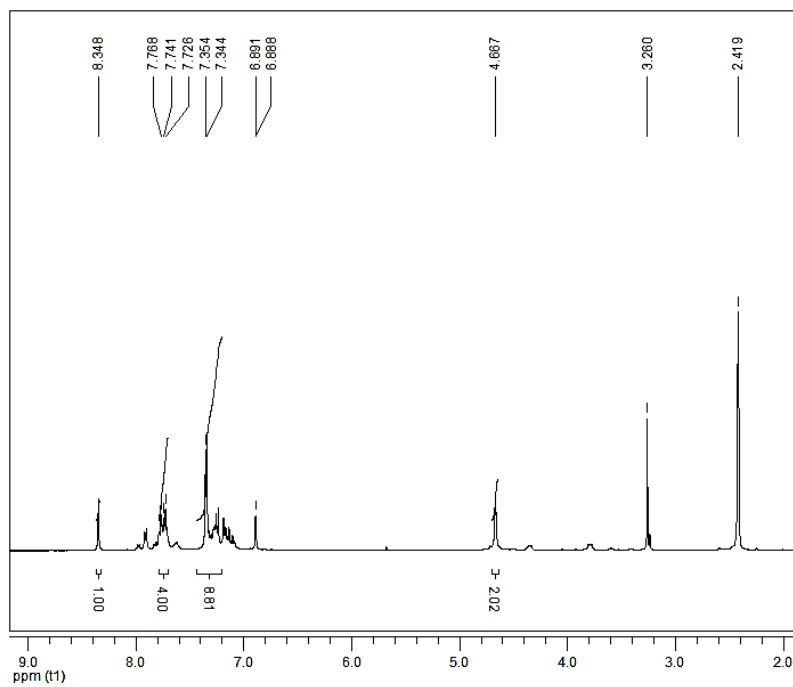


Fig. S3: ^{13}C $\{^1\text{H}\}$ NMR spectra of ligand **LH** in $\text{DMSO-}d_6$.

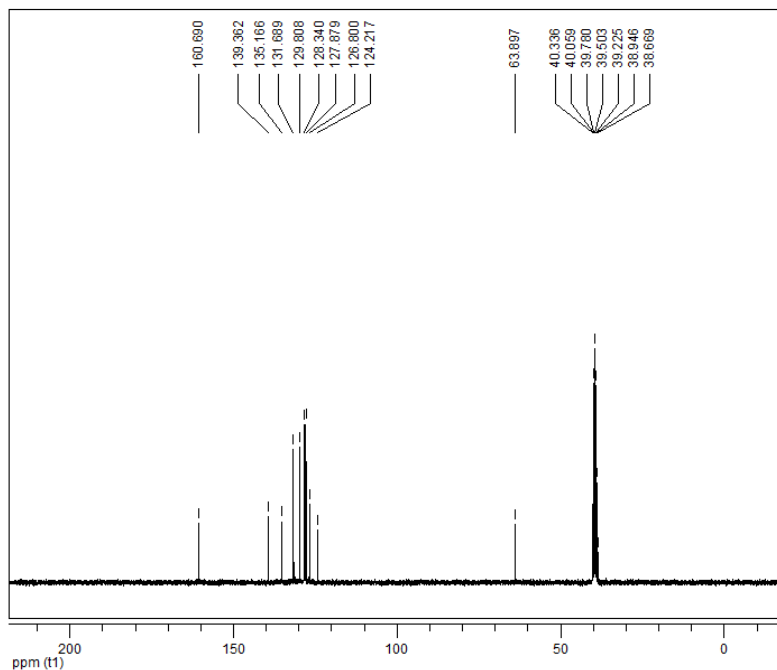


Fig. S4: ^{13}C $\{^1\text{H}\}$ NMR spectra of complex **1** in $\text{DMSO-}d_6$.

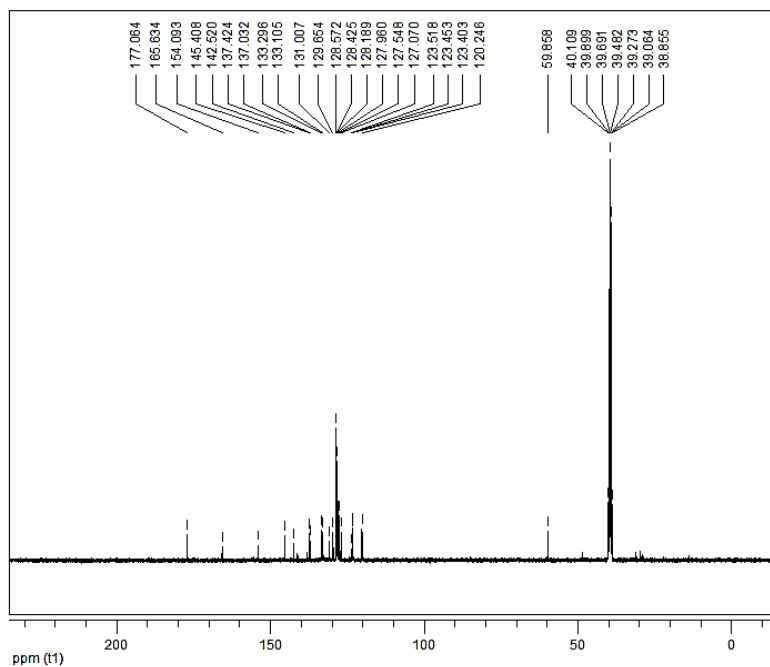


Fig. S5: *In vitro* cytotoxic activity of sodium saccharin (A), ligand **LH** (B) and complex **1** (C) against HeLa, A549 and MCF-7 tumor cell lines. Results are the mean \pm SD of three independent experiments.

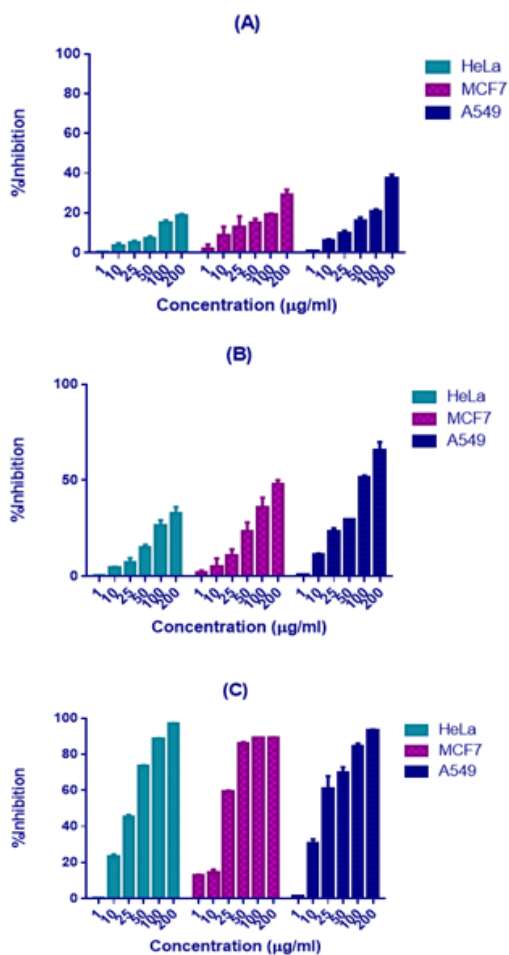


Fig. S6: *In vitro* cytotoxic activity of complex **1** against NIH normal fibroblast cells.

