

Supplementary information data

An amplified platform nanostructure sensor for the analysis of epirubicin in the presence of topotecan as two important chemotherapy drugs for breast cancer therapy

*Seyed A.R. Alavi-Tabari, Hassan Karimi-Maleh, * Mohammad A. Khalilzadeh*, Daryoush Zareyee*

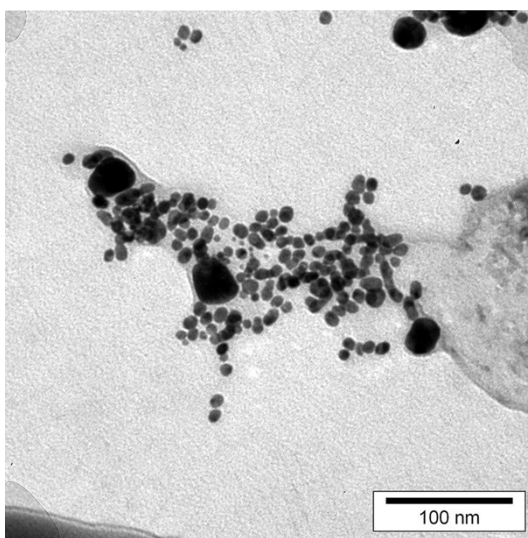
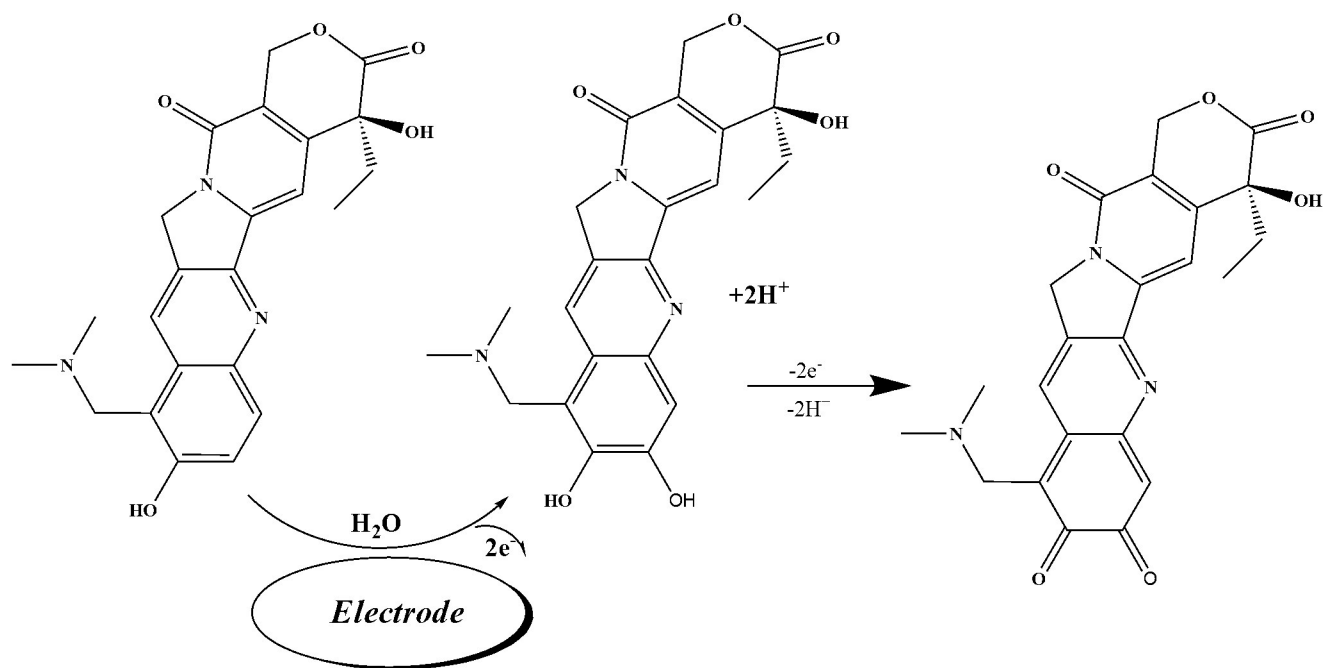


Figure S1: TEM image of Cu nanoparticle.



Scheme S1: Electro-oxidation mechanism for topotecan