

## Ionic Liquid Electrodeposition of Strain-Released Germanium Nanowires as Stable Anodes for Lithium Ion Batteries

Jian Hao<sup>a</sup>, Yu Yang<sup>a</sup>, Jiupeng Zhao<sup>a\*</sup>, Xusong Liu<sup>a</sup>, Frank Endres<sup>b</sup>, Caixia Chi<sup>a</sup>, Binsheng Wang<sup>d</sup>

Xiaoxu Liu<sup>a, e</sup>, Yao Li<sup>c\*</sup>

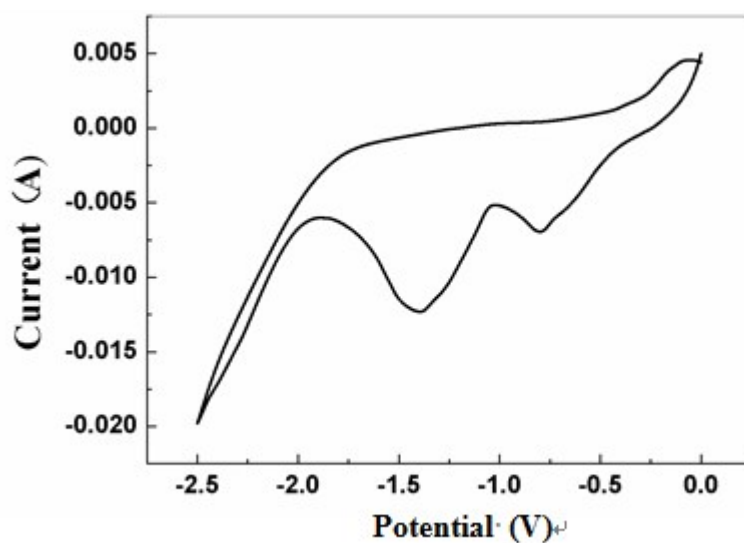


Fig. S1. Cyclic voltammogram for the electrodeposition of Ge from 1.5 M  $\text{AlCl}_3$  + 0.1 M  $\text{GeCl}_4$  / $[\text{EMIm}]\text{Tf}_2\text{N}$  solution on Ni foil. Scan rate:  $10 \text{ mV s}^{-1}$ . At room temperature.

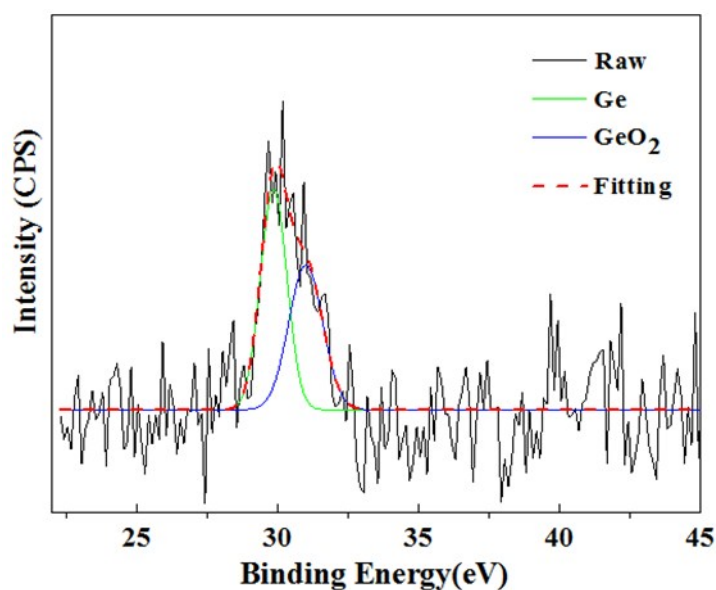


Fig. S2. XPS Ge 3d spectrum of Ge NWs.

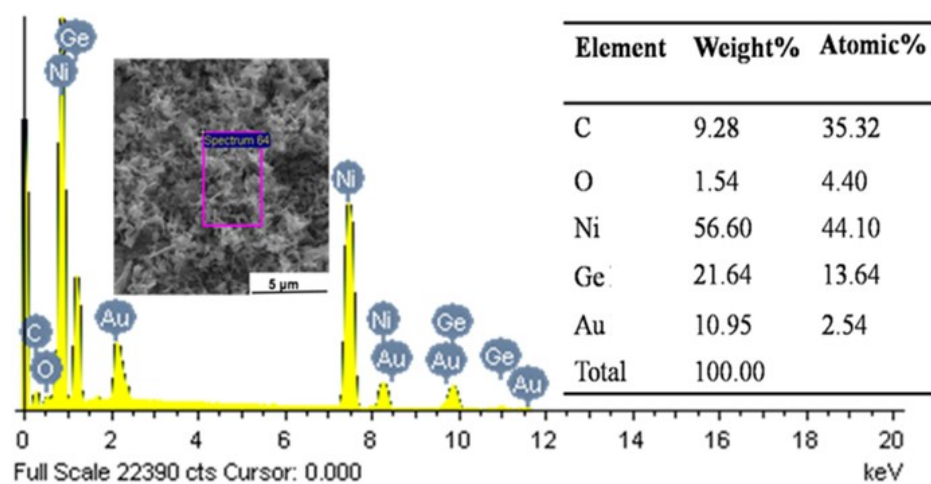


Fig. S3. EDS spectrum of the Ge NWs.

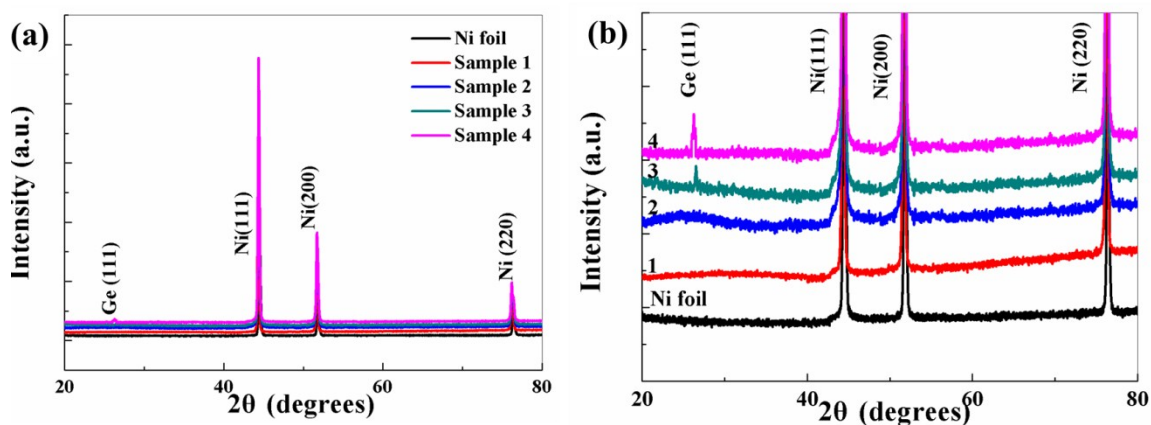


Fig. S4 (a) The XRD patterns of sample 1-4 on Ni foil, (b) the enlargements of the XRD patterns of samples 1-4.

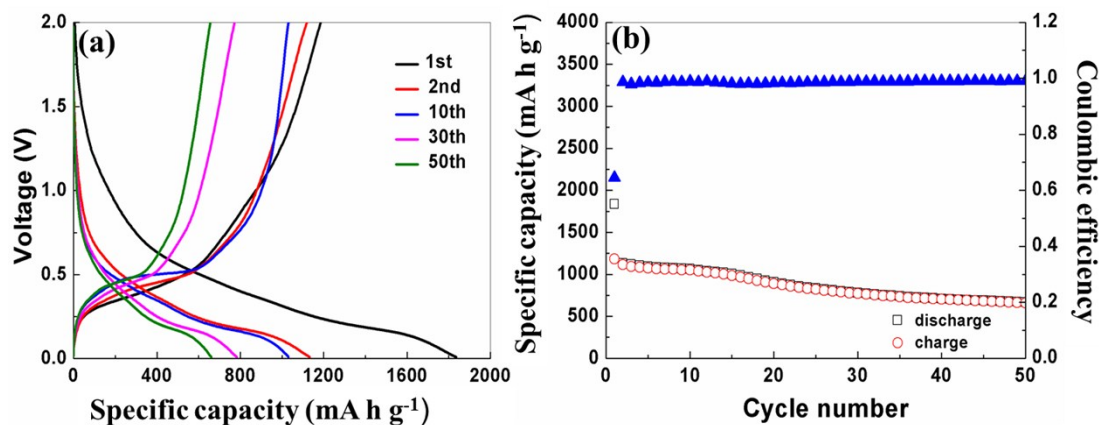


Fig.S5. Electrochemical performance of sample 1 at 0.1C (a) Galvanostatic charge-discharge profiles for different cycles, (b) Cycling performance and Coulombic efficiency.

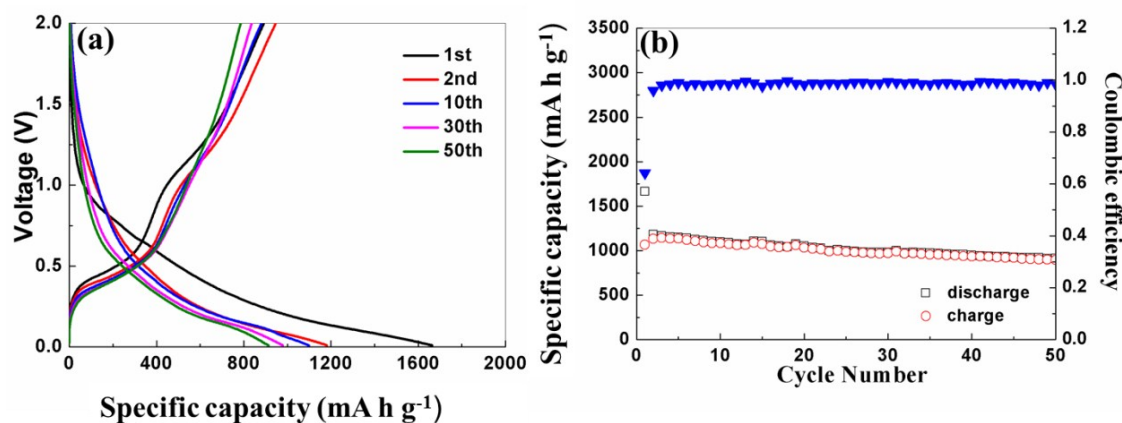


Fig.S6. Electrochemical performance of sample 2 at 0.1C (a) Galvanostatic charge-discharge profiles for different cycles, (b) Cycling performance and Coulombic efficiency.

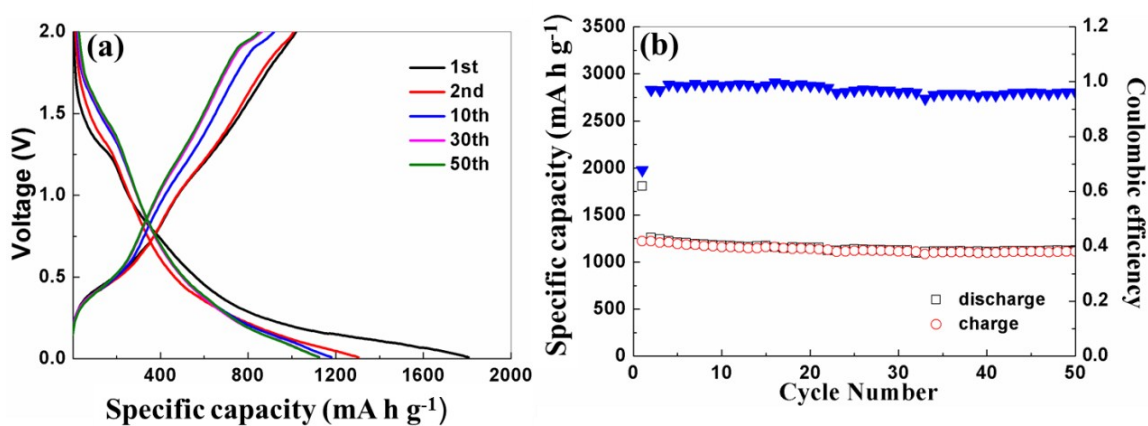


Fig.S7. Electrochemical performance of sample 3 at 0.1C (a) Galvanostatic charge-discharge profiles for different cycles, (b) Cycling performance and Coulombic efficiency.

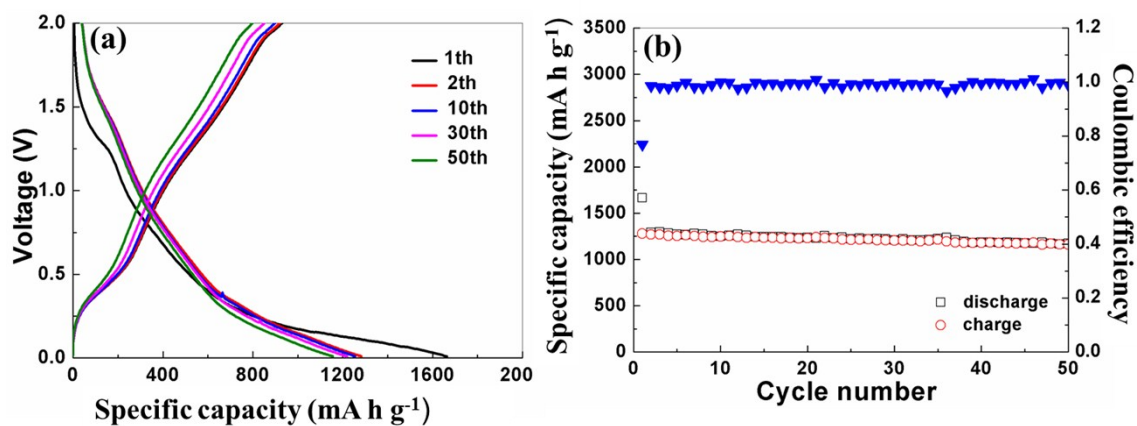


Fig.S8. Electrochemical performance of sample 4 at 0.1C (a) Galvanostatic charge-discharge profiles for different cycles, (b) Cycling performance and Coulombic efficiency.