

Systematic Investigation on the Intracellular Trafficking Network of Polymeric Nanoparticles

Jinxie Zhang^{1,2,*}, Danfeng Chang^{1,2,*}, Yao Yang^{3*}, Xudong Zhang^{1,2,4,#}, Wei Tao^{1,2}, Lijuan Jiang^{1,2}, Xin Liang^{3,5}, Hsiang-I Tsai^{1,2}, Laiqiang Huang^{1,2,#} and Lin Mei^{1,2,5#}

1. School of Life Sciences, Tsinghua University, Beijing 100084, P.R. China
2. The Shenzhen Key Lab of Gene and Antibody Therapy, Division of Life and Health Sciences, Graduate School at Shenzhen, Tsinghua University, Shenzhen 518055, P.R. China
3. College of Life Sciences and Oceanography, Shenzhen University, Shenzhen 518060, People's Republic of China
4. Joint Department of Biomedical Engineering, University of North Carolina at Chapel Hill and North Carolina State University, Raleigh, North Carolina 27695, United States
5. School of Pharmaceutical Sciences, Sun Yat-sen University, University Town, Guangzhou, 510006, People's Republic of China

* These authors contributed equally to this work.

Corresponding authors:

Lin Mei: Tel/Fax: +86 75526036736, E-mail: mei.lin@sz.tsinghua.edu.cn

Laiqiang Huang: Tel/Fax: +86 75526036012, E-mail: laiqianghuangthu@163.com

Xudong Zhang: Tel/Fax: +1(314) 882-9360, E-mail: x.d.zhang@foxmail.com

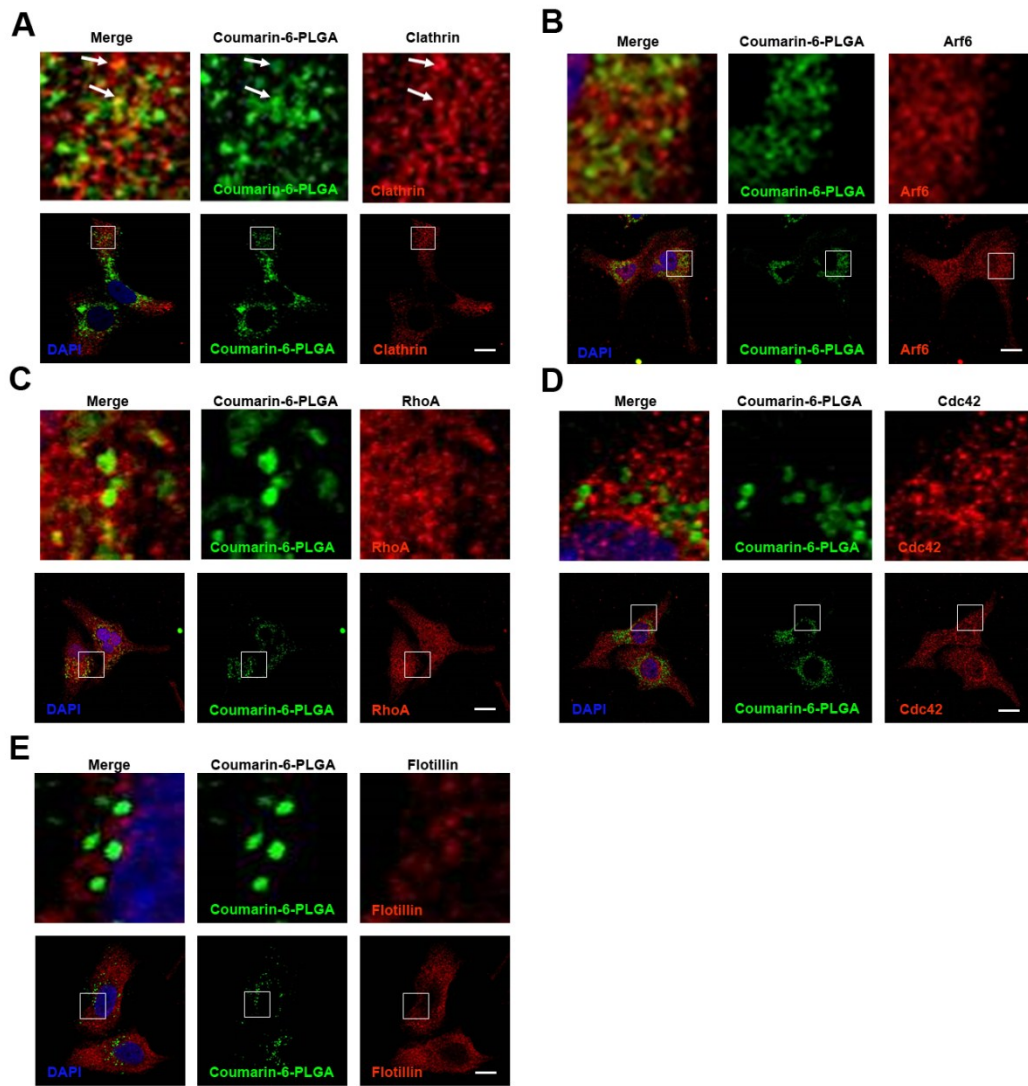


Fig. S1. Confocal images of HeLa cells, which were treated with 100 $\mu\text{g}/\text{mL}$ C-6-loaded PLGA nanoparticles for 20 hours. Clathrin, Arf-6, RhoA, Cdc42 and Flotillin were detected with primary antibodies against Clathrin, Arf-6, RhoA, Cdc42 and Flotillin, respectively. (A-E) Scale bars: 10 μm .

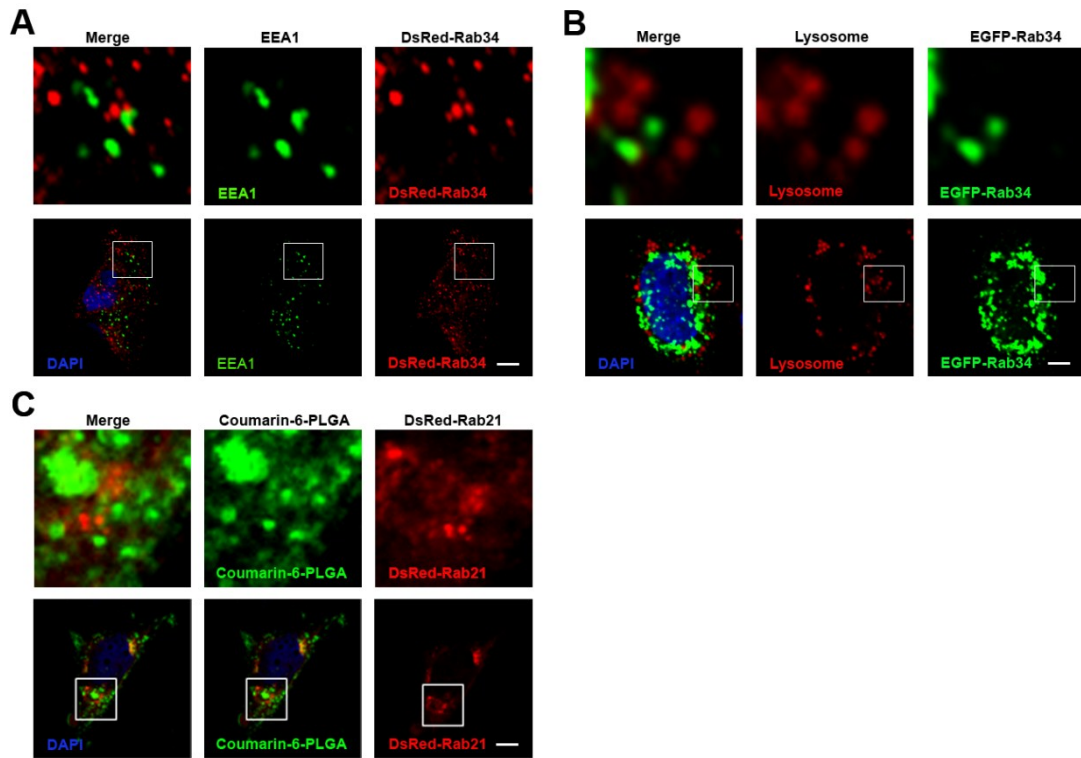


Fig. S2. (A) EEA1 was detected in DsRed-Rab34 transfected HeLa cells with a primary antibody against EEA1; (B) For lysosome detection, the HeLa cells were transfected with DsRed-Rab34, treated with 100 $\mu\text{g}/\text{mL}$ C-6-loaded PLGA nanoparticles for 20 h, and then co-treated with Lyso-Tracker Red probes for 30 min. (C) DsRed-Rab21 transfected HeLa cells were treated with 100 $\mu\text{g}/\text{mL}$ C-6-loaded PLGA nanoparticles for 20 h. Scale bars: 10 μm .

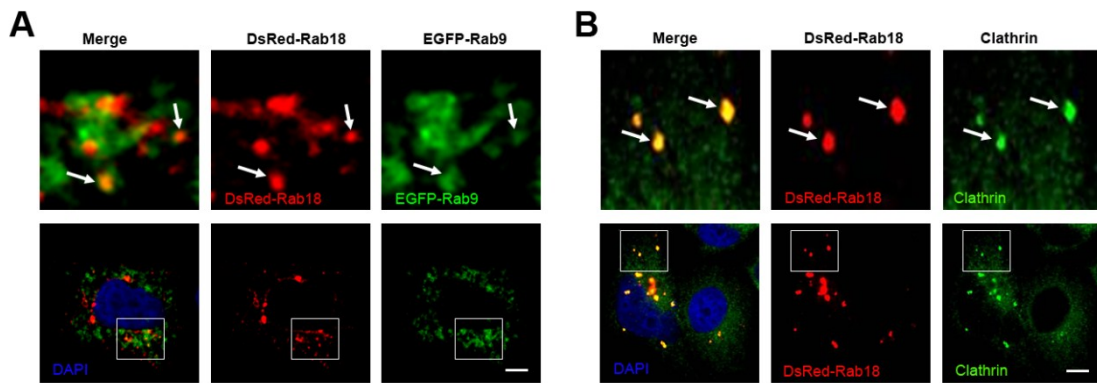


Fig. S3. (A) EGFP-Rab9 cells were co-transfected with DsRed-Rab18; (B) Clathrin was detected in DsRed-Rab18 transfected HeLa cells with a primary antibody against Clathrin. Scale bars: 10 μm .

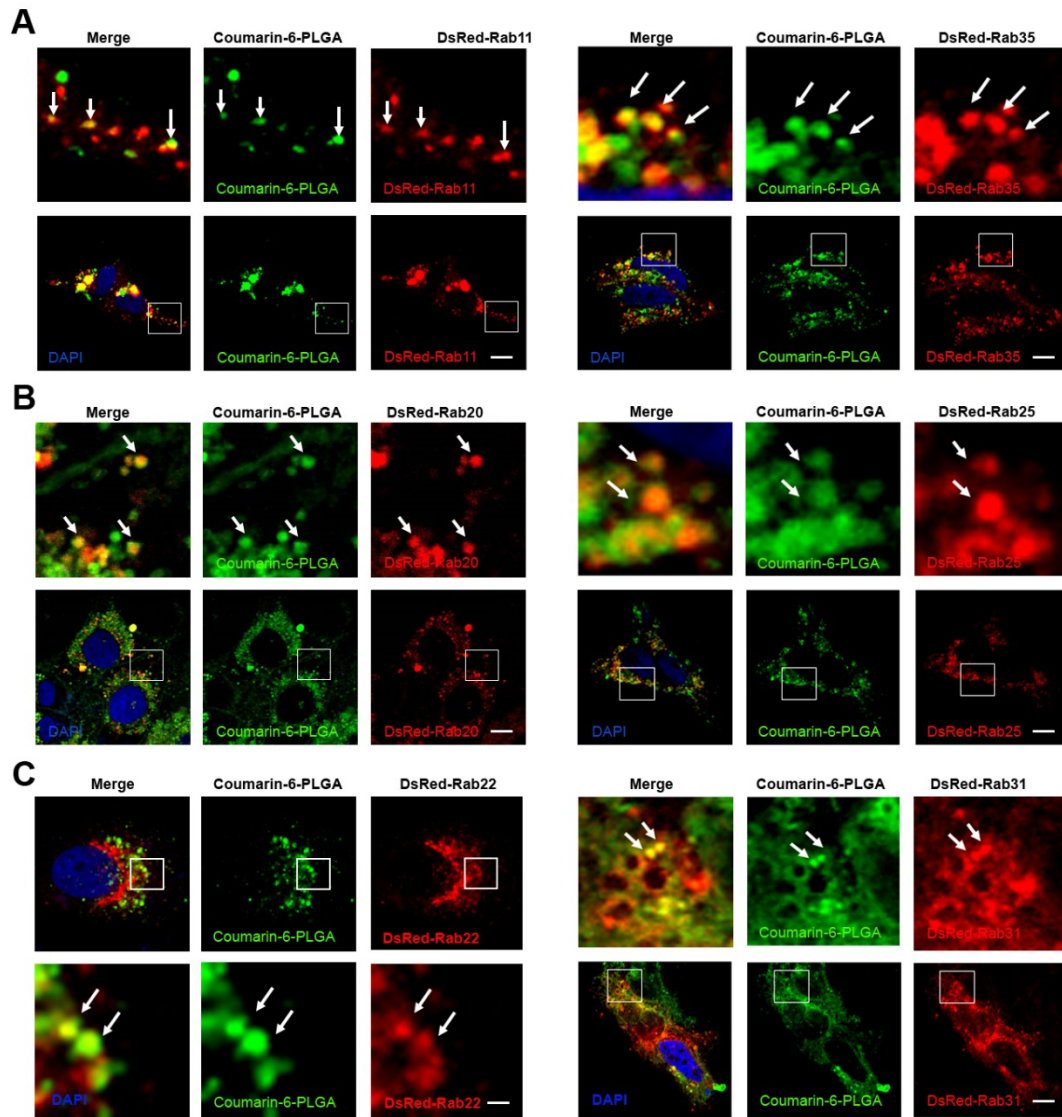


Fig. S4. (A) Confocal images of HeLa cells, DsRed-Rab23 transfected HeLa cells were treated with 100 $\mu\text{g}/\text{mL}$ Coumarin-6-loaded PLGA nanoparticles for 20 h; (B-E) DsRed-Rab23 cells were queried by primary antibodies against RhoA, Cdc42, Flotillin and Arf-6, respectively. Scale bars: 10 μm .

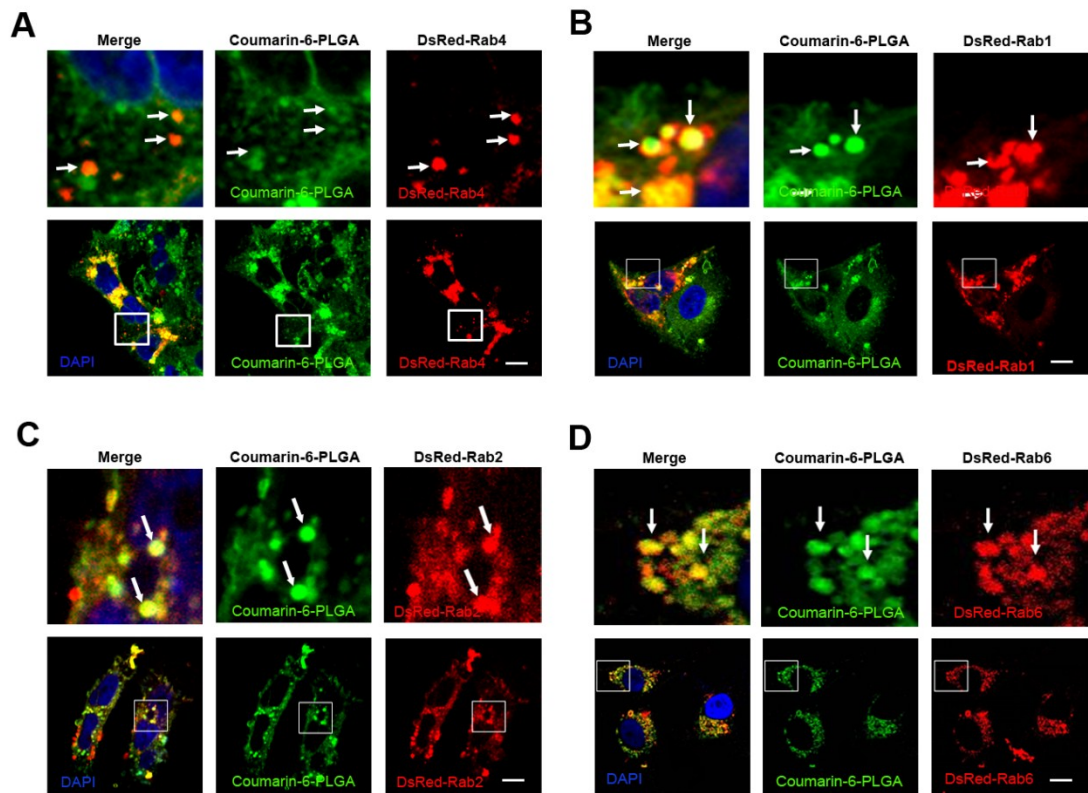


Fig. S5. (A) Confocal images of HeLa cells. DsRed-Rab4, DsRed-Rab1, DsRed-Rab2 and DsRed-Rab6 transfected HeLa cells, respectively. Then treated with 100 $\mu\text{g}/\text{mL}$ Coumarin-6-loaded PLGA nanoparticles for 20 h; Scale bars: 10 μm

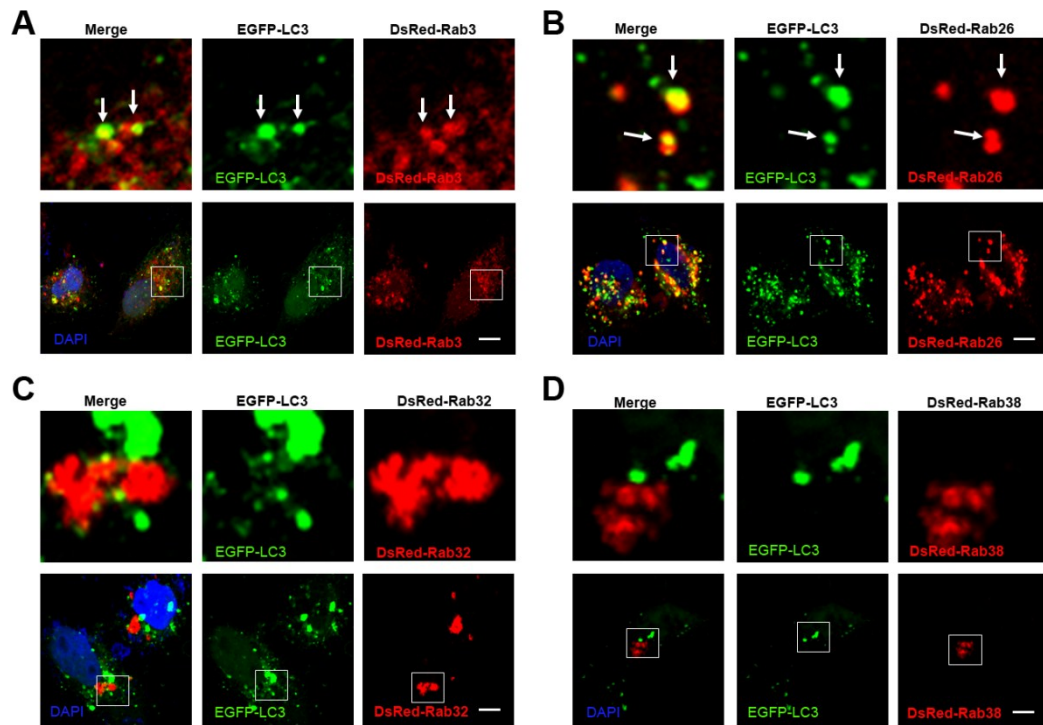


Fig. S6. (A-D) Confocal images of DsRed-Rab3, DsRed-Rab26, DsRed-Rab32 and DsRed-Rab38 HeLa cells co-transfected with 100 $\mu\text{g}/\text{mL}$ EGFP-LC3, respectively. Scale bars: 10 μm .