

**Clinically approved PEGylated nanoparticles are covered by a protein corona that boosts uptake
by cancer cells**

M. Papi^{a§}, D. Caputo^{b§}, V. Palmieri,^a R. Coppola,^b S. Palchetti,^{c,d} F. Bugli,^e C. Martini,^e L.
Digiacoimo,^{c,f} D. Pozzi^{c,d*} and G. Caracciolo^{c*}

^aIstituto di Fisica, Università Cattolica del Sacro Cuore, Largo F. Vito 1, 00168 Rome, Italy

^bUniversity Campus Bio-Medico di Roma, Via Alvaro del Portillo 200, 00128 Rome, Italy

^cDepartment of Molecular Medicine, “Sapienza” University of Rome, Viale Regina Elena 291,
00161 Rome, Italy

^dIstituti Fisioterapici Ospitalieri, Istituto Regina Elena, Via Elio Chianesi 53,
00144 Rome, Italy.

^eIstituto di Microbiologia, Università Cattolica del Sacro Cuore, Largo F. Vito 1, 00168 Rome, Italy

^fDepartment of Bioscience and Biotechnology, University of Camerino, Via Gentile III da Varano,
62032 Camerino, MC, Italy

[§]equal contribution

E-mail: giulio.caracciolo@uniroma1.it; daniela.pozzi@uniroma1.it

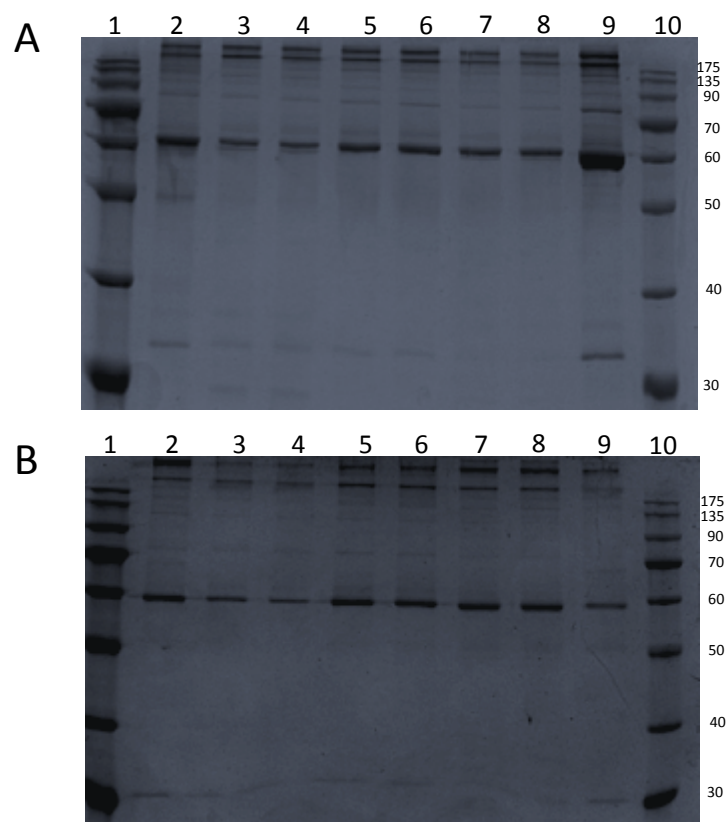


Figure S1. Representative one-dimensional SDS-PAGE gel of plasma proteins obtained from Onivyde (**A**) and “unPEGylated Onivyde” (**B**) following 1-hour incubation with plasma of four pancreatic ductal adenocarcinoma (PDAC) patients. (lane 2: patient “P1”; lanes 3-4: patient “P2”; lanes 5-6: patient “P3”; lanes 7-8: patient “P4”; lane 9: patient “P1”). The molecular weights (kDa) of the proteins on the standard ladder are reported on lanes 1 and 10 (the amount of ladder in lane 1 is double that of lane 10).

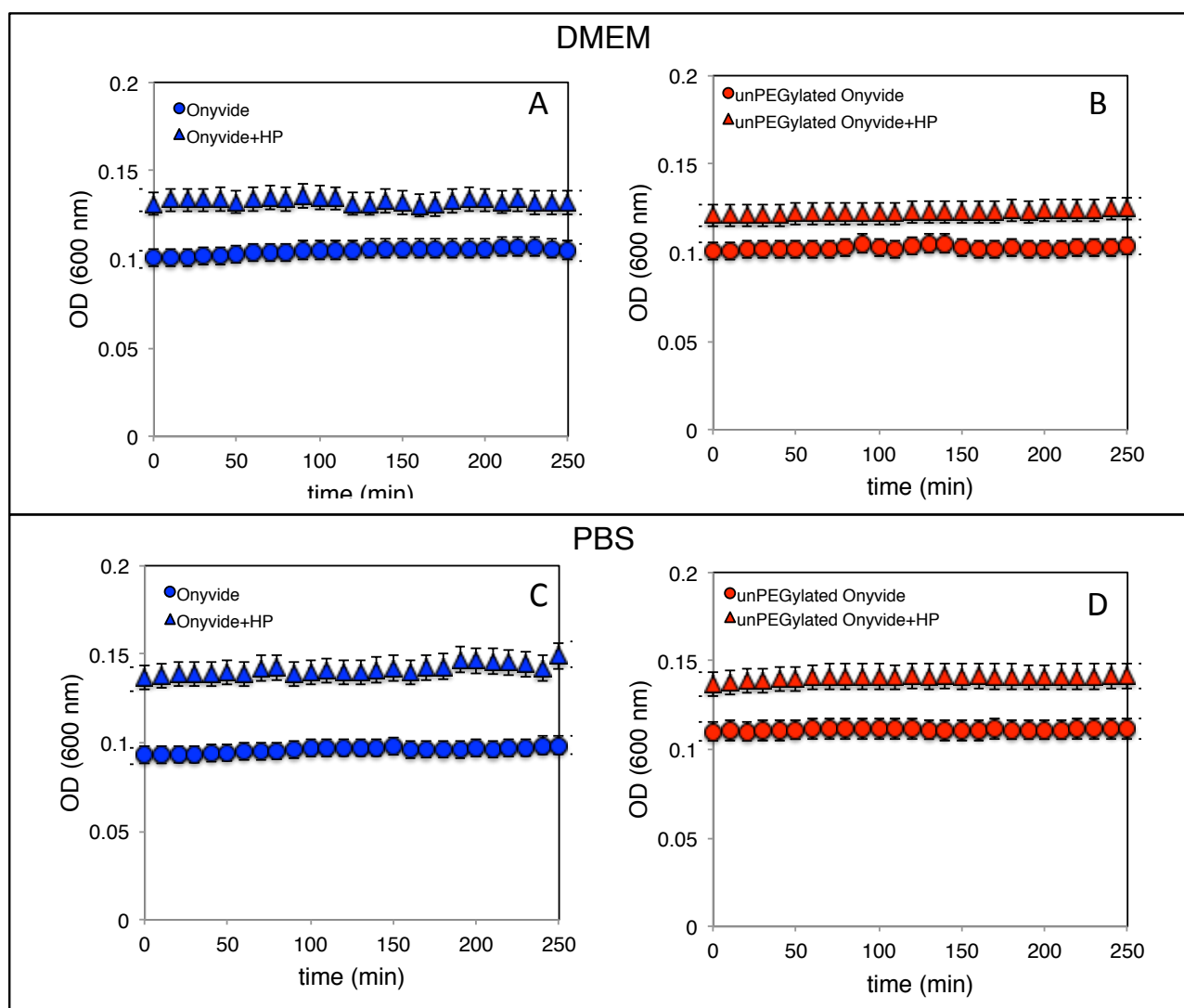


Figure S2. Temporal aggregation and sedimentation of liposomes and liposome-protein corona (PC) in Phosphate-buffered saline (PBS) and cell culture medium (Dulbecco's modified Eagle's medium, DMEM) were explored by measuring Optical Density (OD) at 600 nm. OD measurements were performed by means of a Cytation 3 multimode reader (Biotek, USA). To this end, 10 μ L of each sample has been re-suspended in a final volume of 100 μ L of PBS or DMEM and OD has been measured every 10 minutes for 4 hours. Measurements have been done in triplicate, PBS or RPMI alone have been use as blanks. Results are given as average \pm standard deviation (S.D.).

Table S1. Inclusion criteria in healthy and pancreatic cancer group.

PANCREATIC CANCER GROUP
1) Age \geq 18 years
2) Cyto-histologically proven diagnosis of pancreatic adenocarcinoma
3) Personal medical history negative for neoplastic, renal or liver disease or blood disorders
4) Adequate renal function: creatinine <1.5 mg/dl, blood urea nitrogen <1.5 times the upper limit
5) Absence of uncontrolled infections
6) Written informed consent
7) No previous chemotherapy or radiotherapy

Table S2. Clinical/pathological stage in pancreatic cancer patients group.

Stage of pancreatic cancer	N.
cT2N+M0	1
cT3N+M0	2
cT4N+M0	1
cT2N+M+	1
cT3N+M+	2
cT4N+M+	1
pT3N1MxG2	2