

**Bismuth oxyiodide coupled with bismuth nanodots for enhanced photocatalytic  
bisphenol A degradation: synergistic effects and mechanistic insight**

Shunqin Luo<sup>a</sup>, Jinjia Xu<sup>b</sup>, Zijing Li<sup>a</sup>, Chen Liu<sup>c</sup>, Jiawei Chen<sup>a\*</sup>, Xin Min<sup>d</sup>, Minghao Fang<sup>d</sup>, Zhaohui  
Huang<sup>d\*</sup>

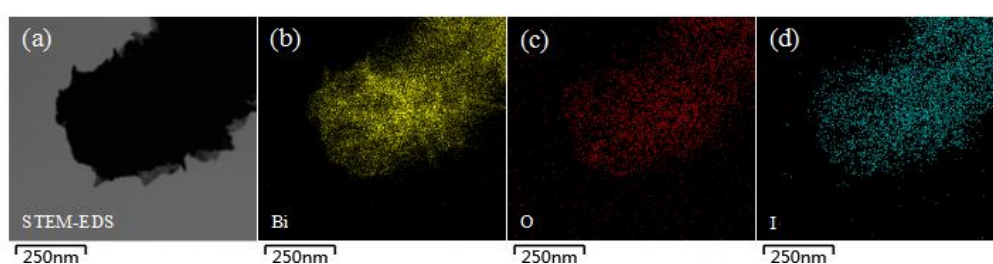


Figure S1. STEM-EDS elemental mapping: (a) STEM Image; (b) Bi; (c) O; (d) I

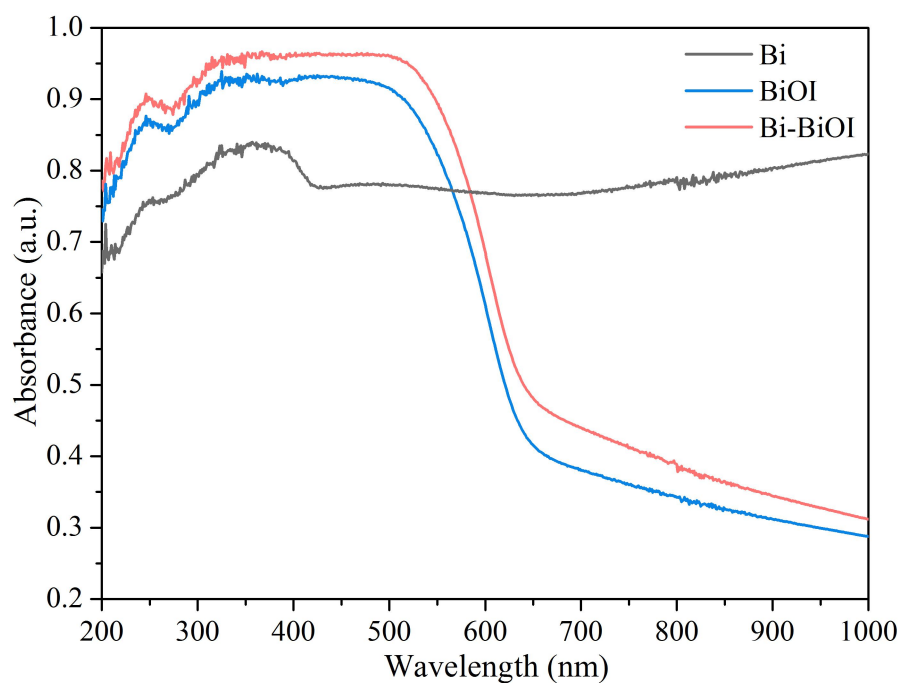


Figure S2. UV-Vis DRS spectra of Bi-BiOI and BiOI.

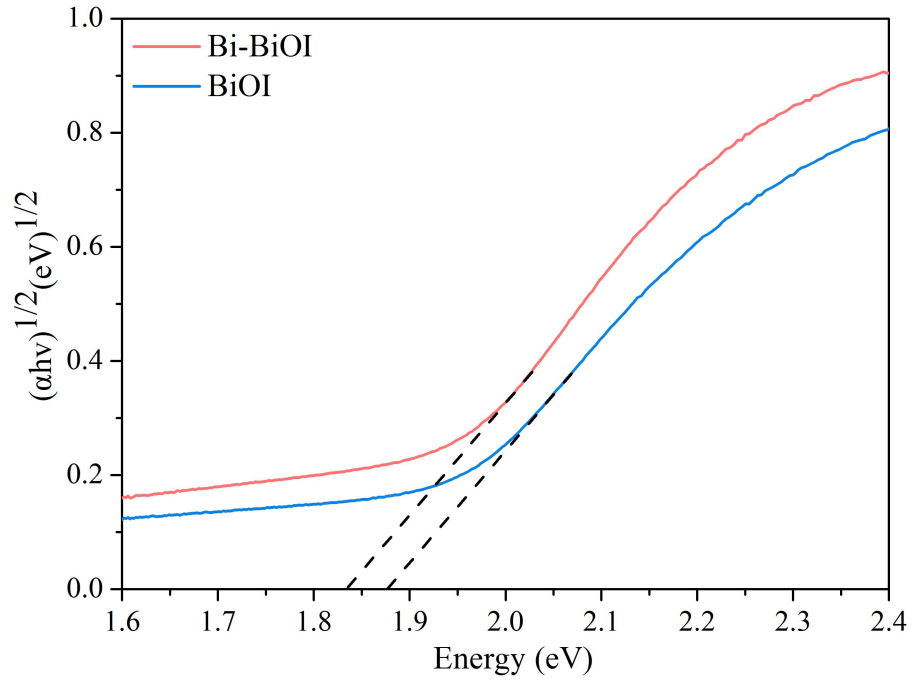


Figure S3. Plots of  $(\alpha h\nu)^2$  vs. energy of absorbed light for Bi-BiOI and BiOI.

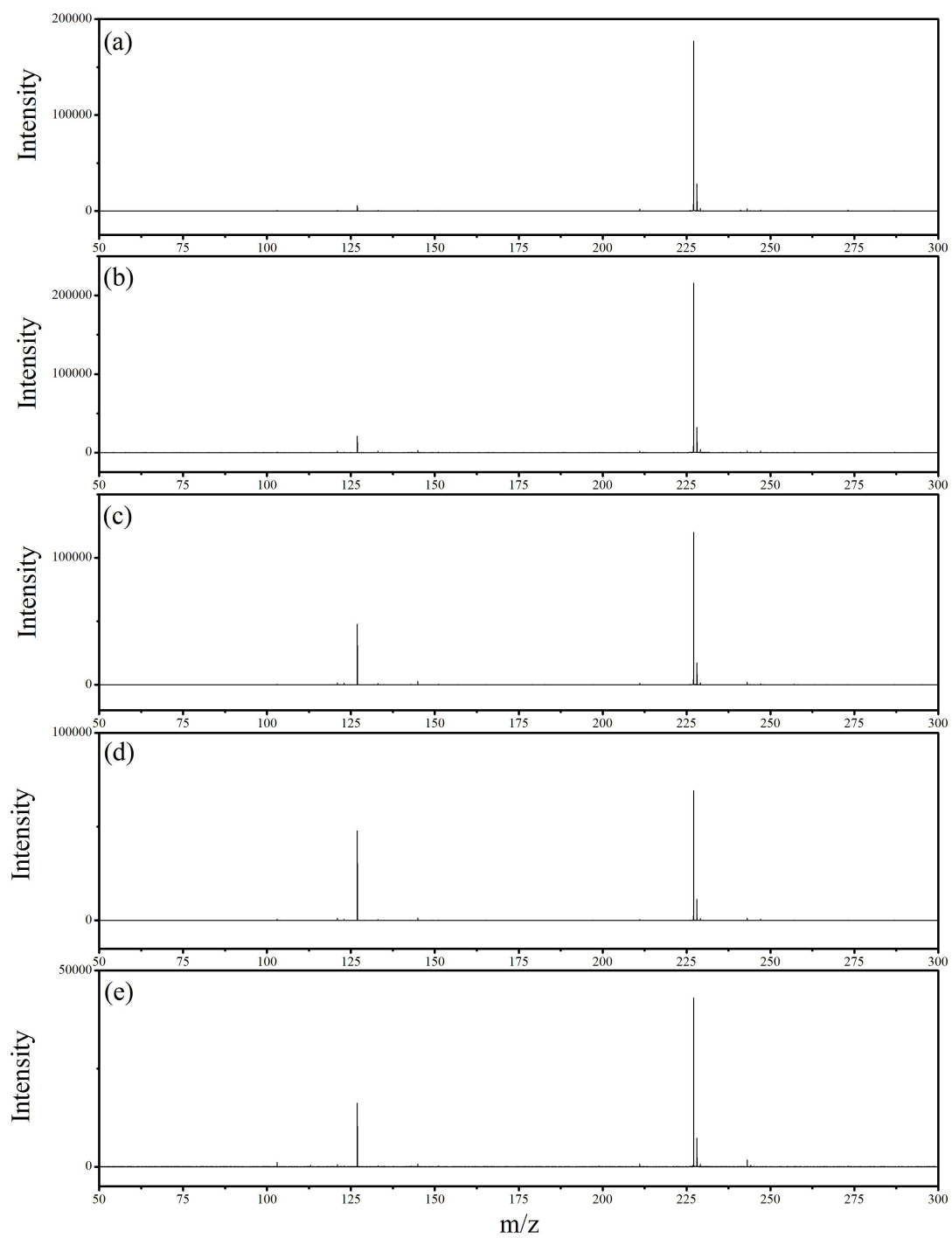


Figure S4. ESI-MS spectra in the different reaction time: (a) 30 min; (b) 60 min; (c) 90 min; (d) 120 min; (e) 150 min