

# Supplementary Materials

## Continuous Fabrication of MnS/Co Nanofibrous Air Electrode for Wide Integration of Rechargeable Zinc-Air Battery

*Yang Wang<sup>a, b</sup>, Jing Fu<sup>b</sup>, Yining Zhang<sup>b</sup>, Matthew Li<sup>b</sup>, Fathy Mohamed Hassan<sup>b</sup>, Guang Li<sup>a, \*</sup>, and  
Zhongwei Chen<sup>b, \*</sup>*

*<sup>a</sup> State Key Laboratory for Modification of Chemical Fibers and Polymer Materials, College of Materials  
Science and Engineering, Donghua University, Shanghai, PR China;*

*<sup>b</sup> Applied Nanomaterials and Clean Energy Laboratory, Department of Chemical Engineering, University of  
Waterloo, Waterloo, ON, Canada;*

*\*Corresponding author: Guang Li, E-mail: [liq@dhu.edu.cn](mailto:liq@dhu.edu.cn)  
Zhongwei Chen, E-mail: [zhwchen@uwaterloo.ca](mailto:zhwchen@uwaterloo.ca)*

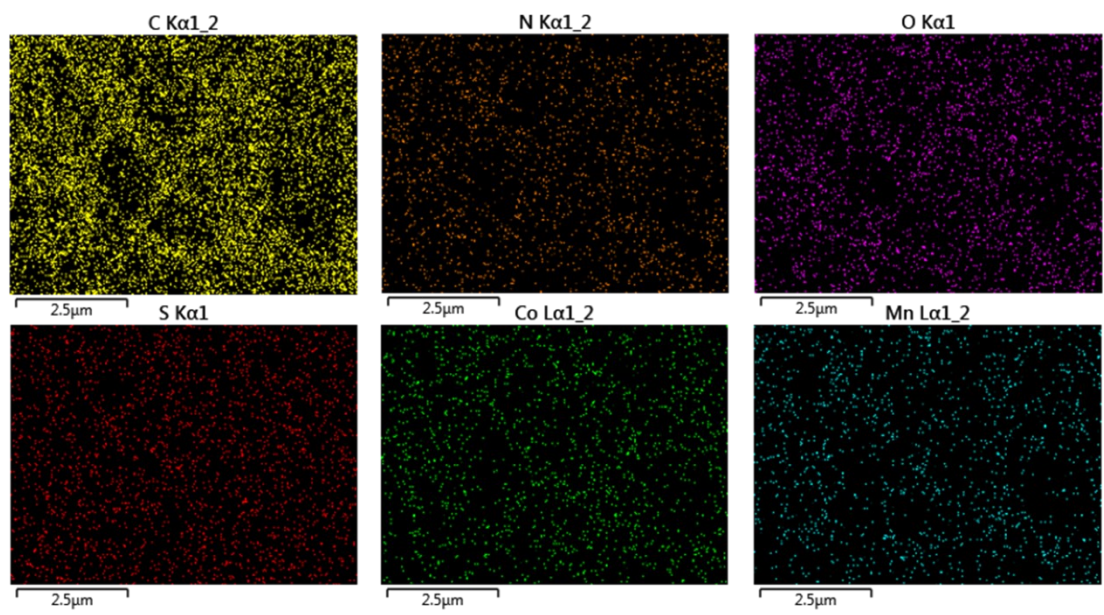


Fig. S1 EDX mapping images C, N, O, S, Co and Mn of the CMS/NCNF fiber mat.

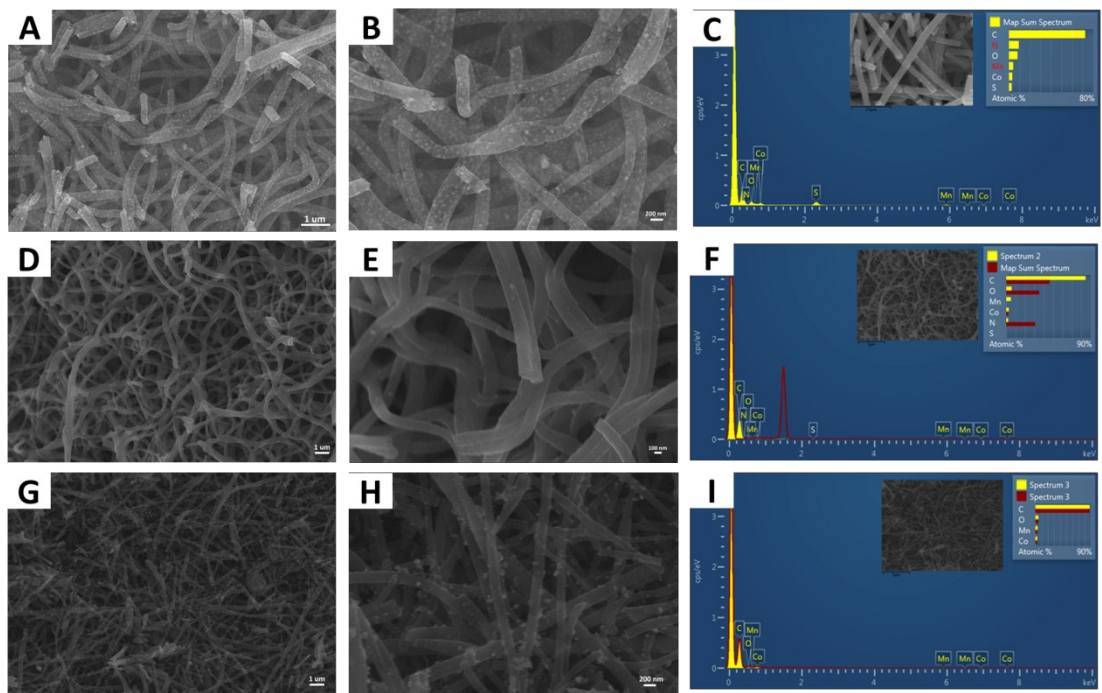


Fig. S2 SEM images of (A, B) the CMS/NCNF, (D, E) the CMO/NCNF and (G, H) the CMO/CNF after pyrolysis, and EDX of (C) the CMS/NCNF, (F) the CMO/NCNF and (I) the CMO/CNF.

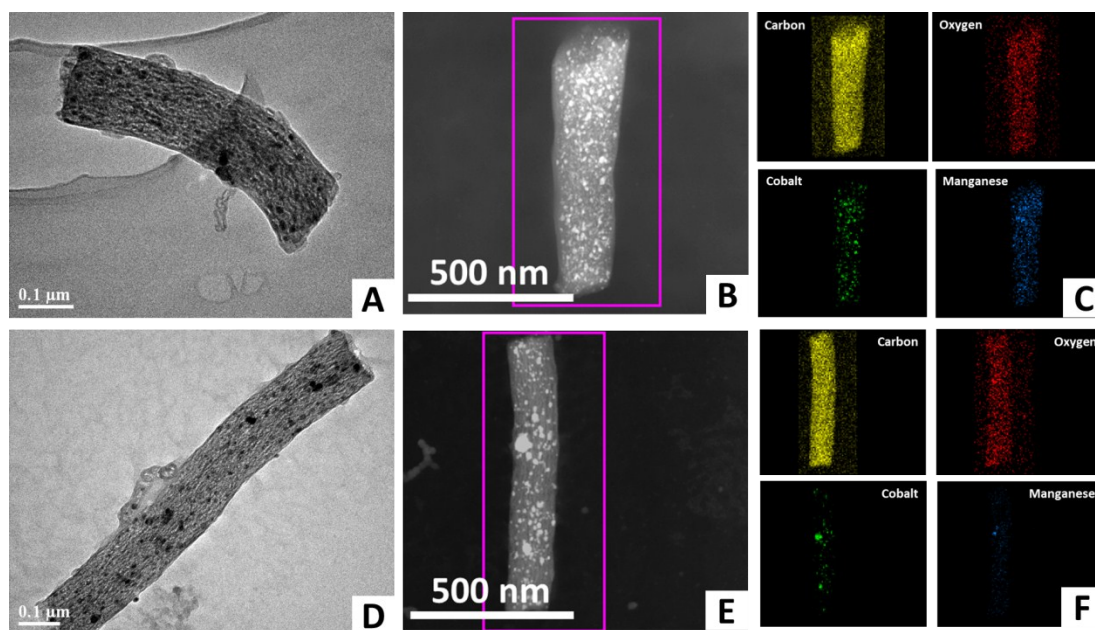


Fig. S3 TEM images of (A) the CMO/NCNF and (D) the CMO/CNF, STEM images of (B) the CMO/NCNF and (E) the CMO/CNF, and corresponding elemental mapping images of (C) the CMO/NCNF and (F) the CMO/CNF.

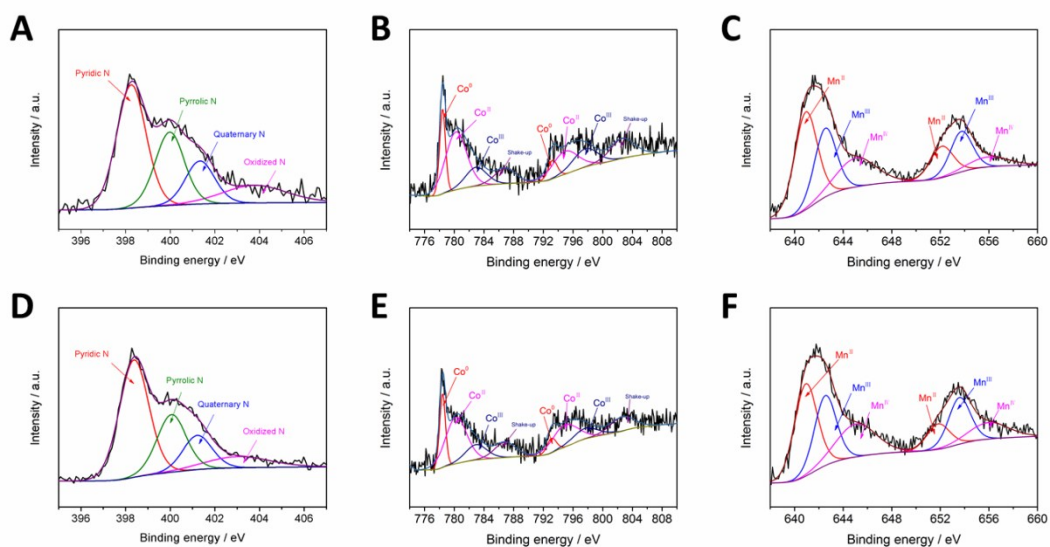


Fig. S4 The high resolution N1s spectra and fitting peaks of CMO/NCNF (A) and CMO/CNF (D). The high resolution Co2p spectra and fitting peaks of CMO/NCNF (B) and CMO/CNF (E). The high resolution Mn2p spectra and fitting peaks of CMO/NCNF (C) and CMO/CNF (F).

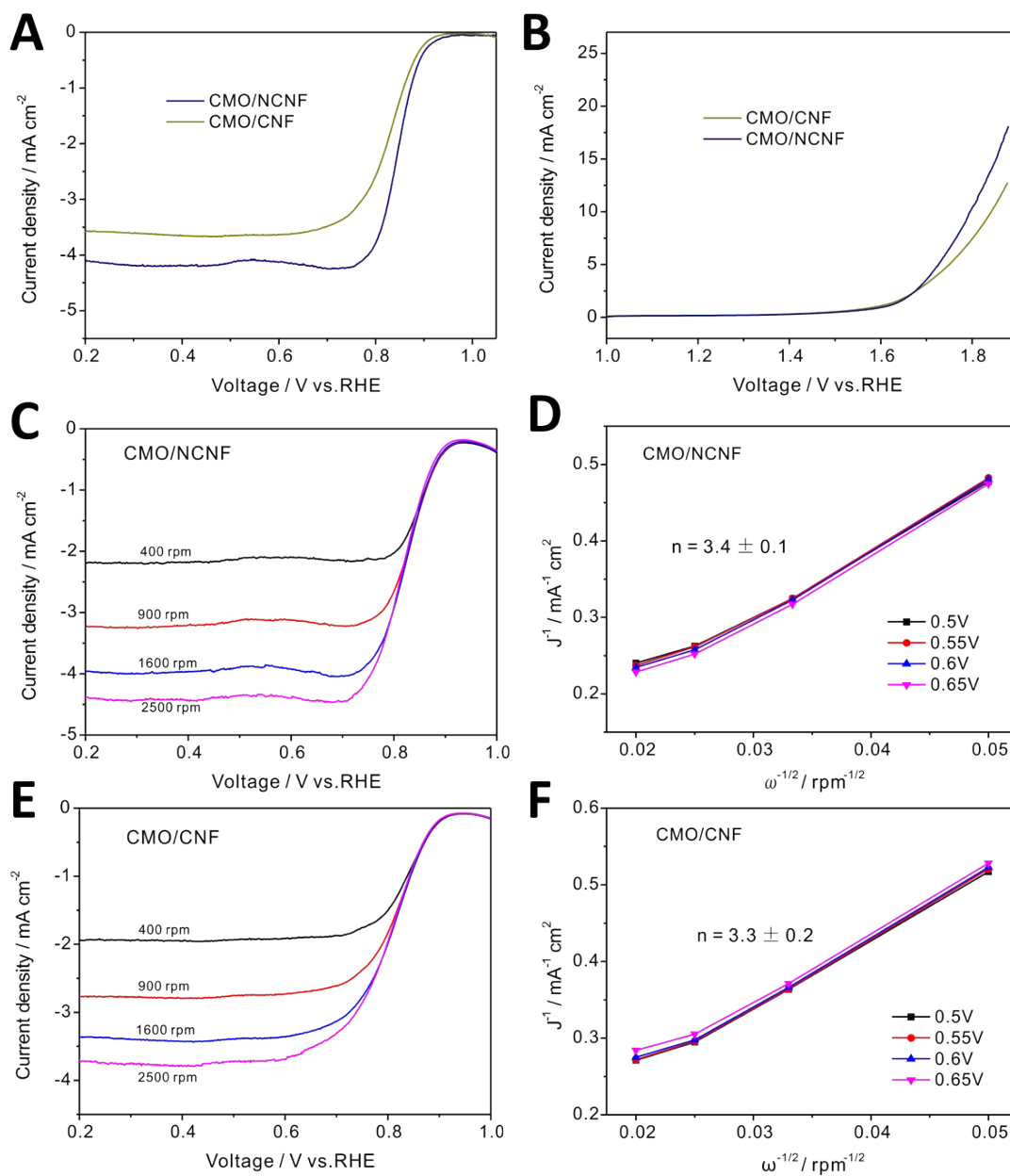


Fig. S5 LSV curves of CMO/NCNF and CMO/CNF for both ORR (A) and OER (B) in 0.1 M KOH at 1600 rpm, LSV curves for ORR at different rotating speeds (C, E), and (D, F) the K-L plots at different potentials including the calculated number of electron transfer.