

Self-assembly pathways and polymorphism in peptide-based nanostructures

N. A. Dudukovic,^{a,b} B. C. Hudson,^c A. K. Paravastu^c and C. F. Zukoski^d

Supplementary Information

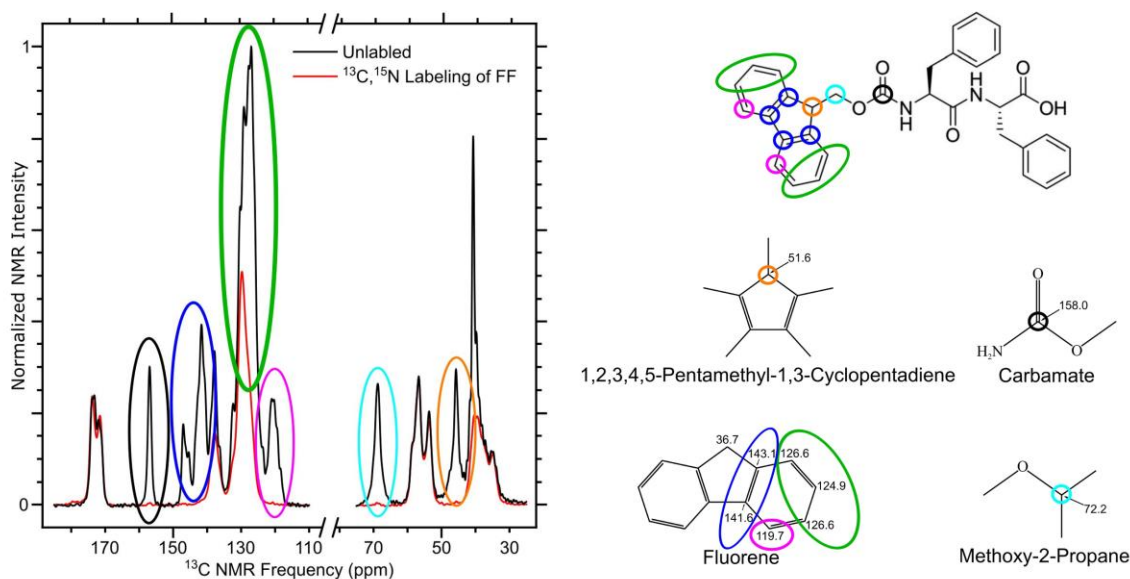


Figure S1. CPMAS spectra showing data for two samples of Fmoc-FF assembled in DMSO/H₂O ($x_{\text{H}_2\text{O}} = 0.95$). The black spectrum was obtained from the natural abundance ^{13}C population in an unlabeled sample, and the red spectrum was obtained from a sample with uniform ^{13}C labeling on both phenylalanine residues.

^a Lawrence Livermore National Laboratory, P.O. Box 808, Livermore, CA 94551.
E-mail: dudukovic1@llnl.gov

^b Department of Chemical and Biomolecular Engineering, University of Illinois at Urbana-Champaign, Urbana, IL 61801

^c School of Chemical & Biomolecular Engineering, Georgia Institute of Technology, Atlanta, GA 30332

^d Chemical and Biological Engineering, University at Buffalo, Buffalo, NY 14260

†Electronic Supplementary Information (ESI) available.

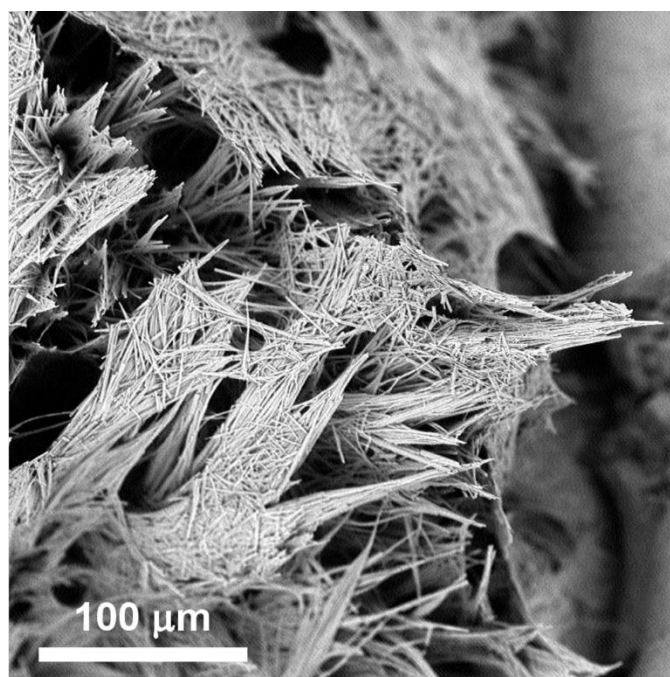


Figure S2. SEM image of a large crystal aggregate grown from a metastable fibrous gel state of Fmoc-FF/methanol/water.
