

Supporting Information

Hierarchical Self-Assembly of Zwitterionic Dendrimer – Anionic Surfactant Complexes into Multiple Stimuli-Responsive Dynamic Nanotube

S. A. Eghtesadi,^a M. A. Kashipour,^b X. Sun,^a W. Zhang,^c R. S. Lillard,^b S. Z. D. Cheng,^c T. Liu^{a*}

^{a,c}. Department of Polymer Science, The University of Akron, Akron, Ohio 44325, USA

^b. Department of Chemical and Biomolecular Engineering, The University of Akron, Akron, Ohio 44325, USA

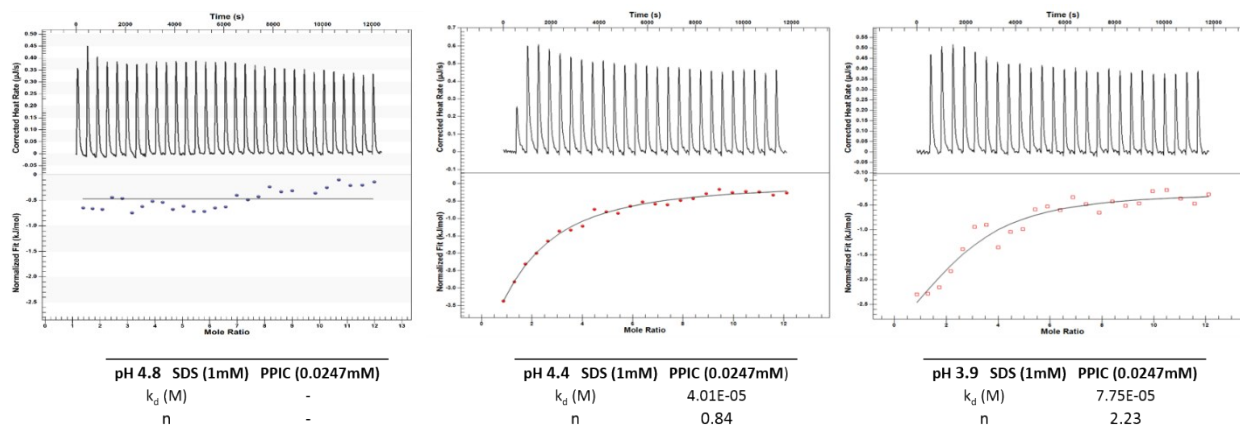


Fig. S1: Titration of 1 mM SDS solution into PPIC solution (24.7 μ M) at (left) pH 4.4 and (right) pH 3.9. Total number of 25 injections of each 10 μ L was conducted at same pH conditions at 25°C.

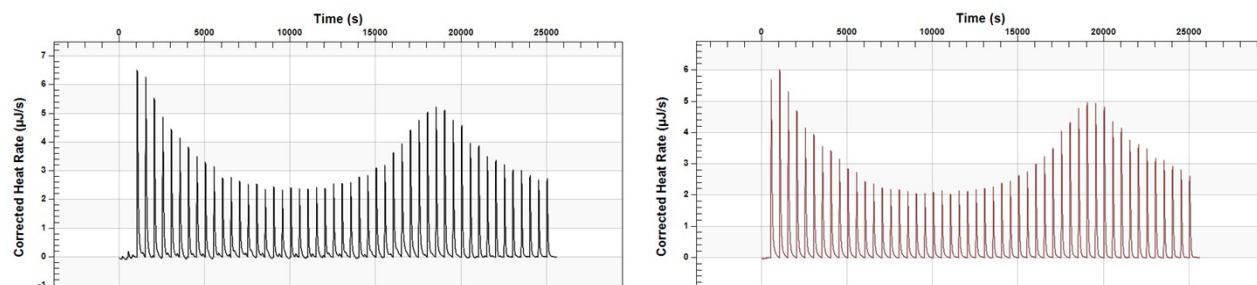


Fig. S2: Raw ITC results (before background subtraction) obtained from titration of diluted HCl solution into PPIC solution (3.3 acetate buffer) containing (left) 1-1 and (right) 1-2 SDS:PPIC molar ratios.

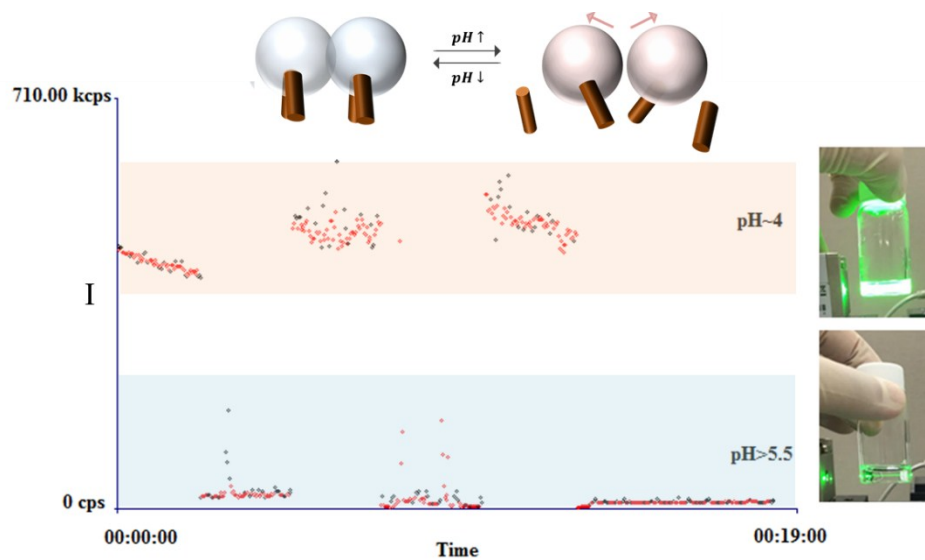


Fig. S3: pH responsive dynamic assembly/disassembly of tubules in solution. High scattered intensity in orange (top) shaded area represents the assembly of tubules while and the drop of the scattered intensity to background level in blue (bottom) shaded area is related to disassembly of them. Attenuation of ($\times 10^{-0.7}$) was used in scattered intensity measurements.

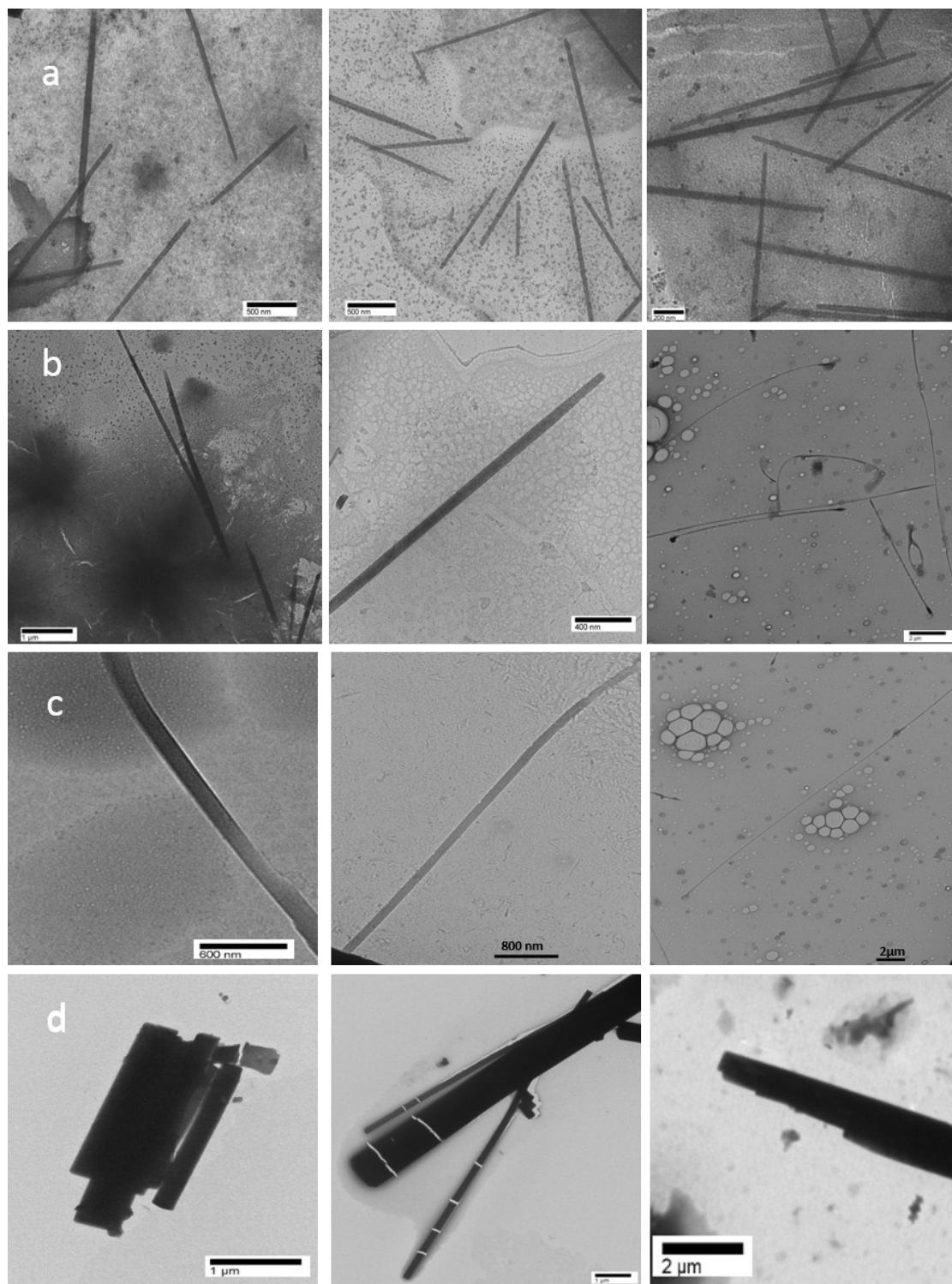


Fig. S4: TEM images of tubules after addition of (a) 0 μL (b) 100 μL (c) 200 μL and (d) 500 μL NaCl (0.1 M) into their solution.

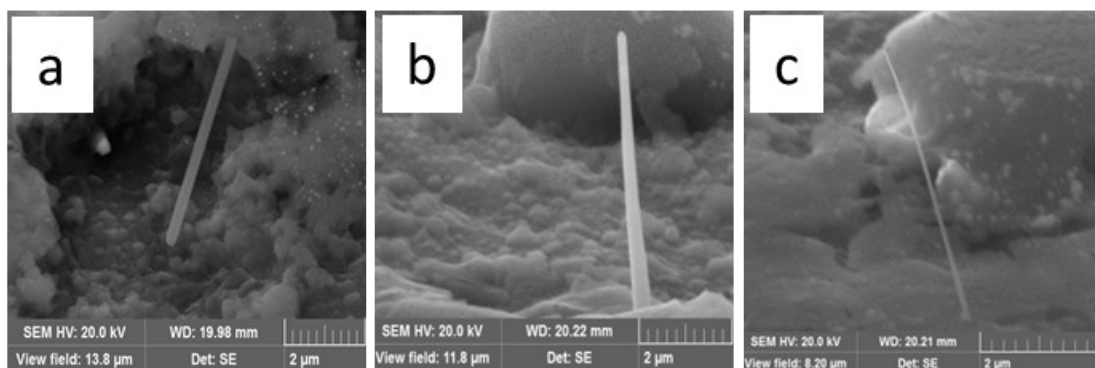


Fig. S5: HR SEM images for 0.30 g/L PPIC solution at the presence of 200 μ L NaCl

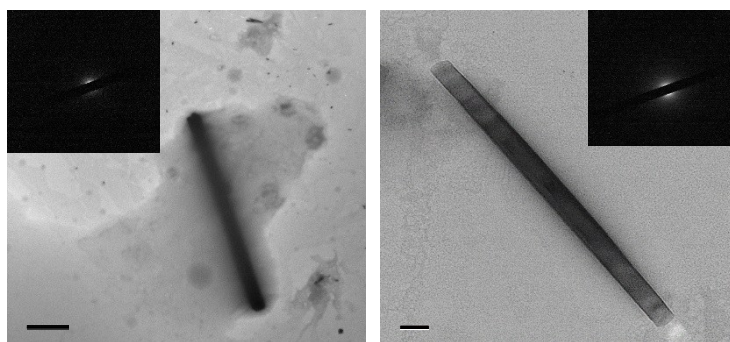


Fig. S6: TEM images of the amorphous nanotube samples (the inset shows the corresponding selected-area electron-diffraction pattern)