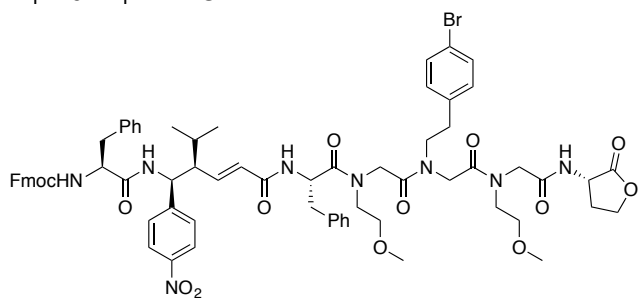
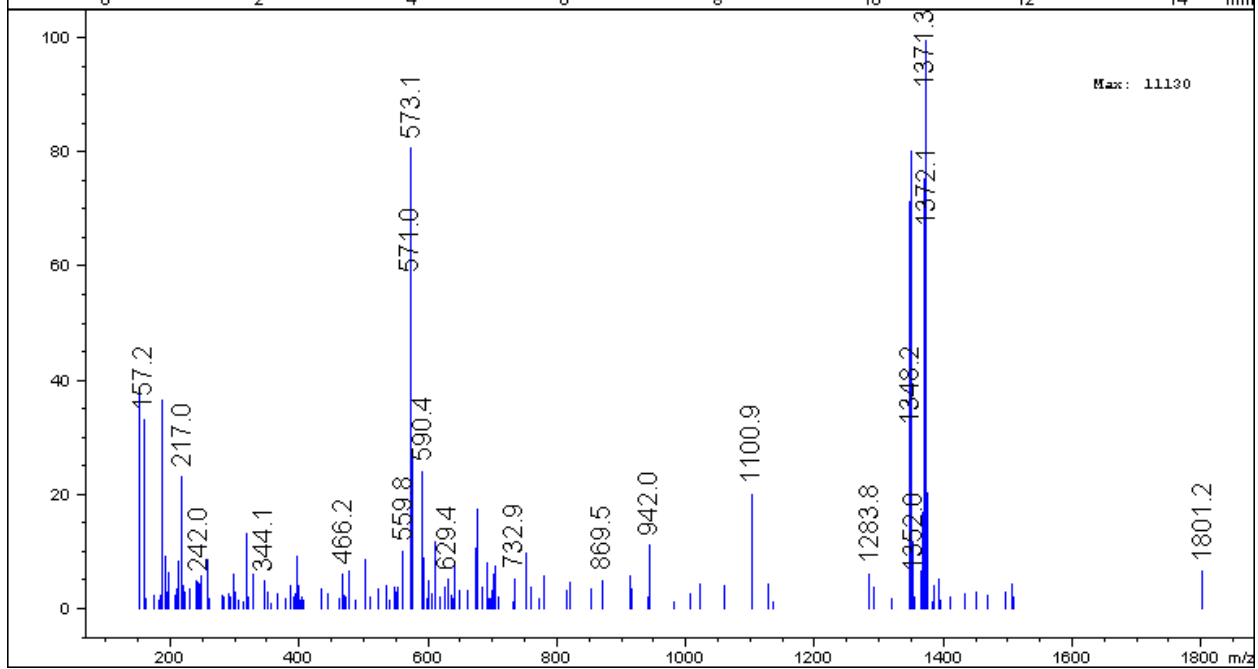
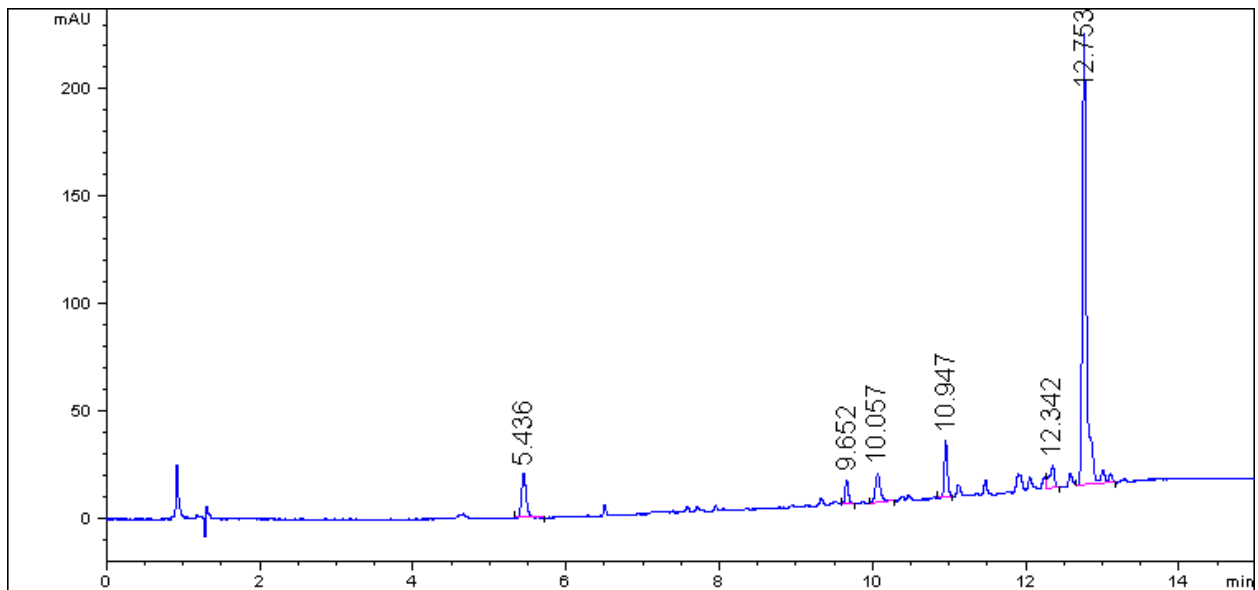


X₁-1d-X₁-Linker

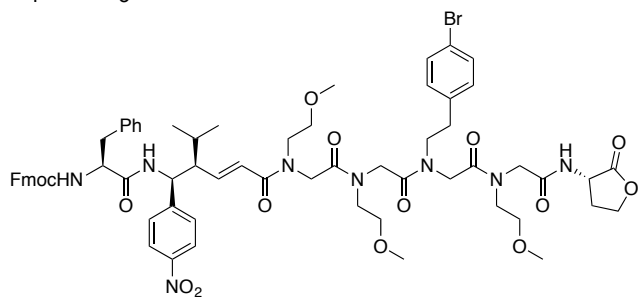


Exact Mass: 1346.49

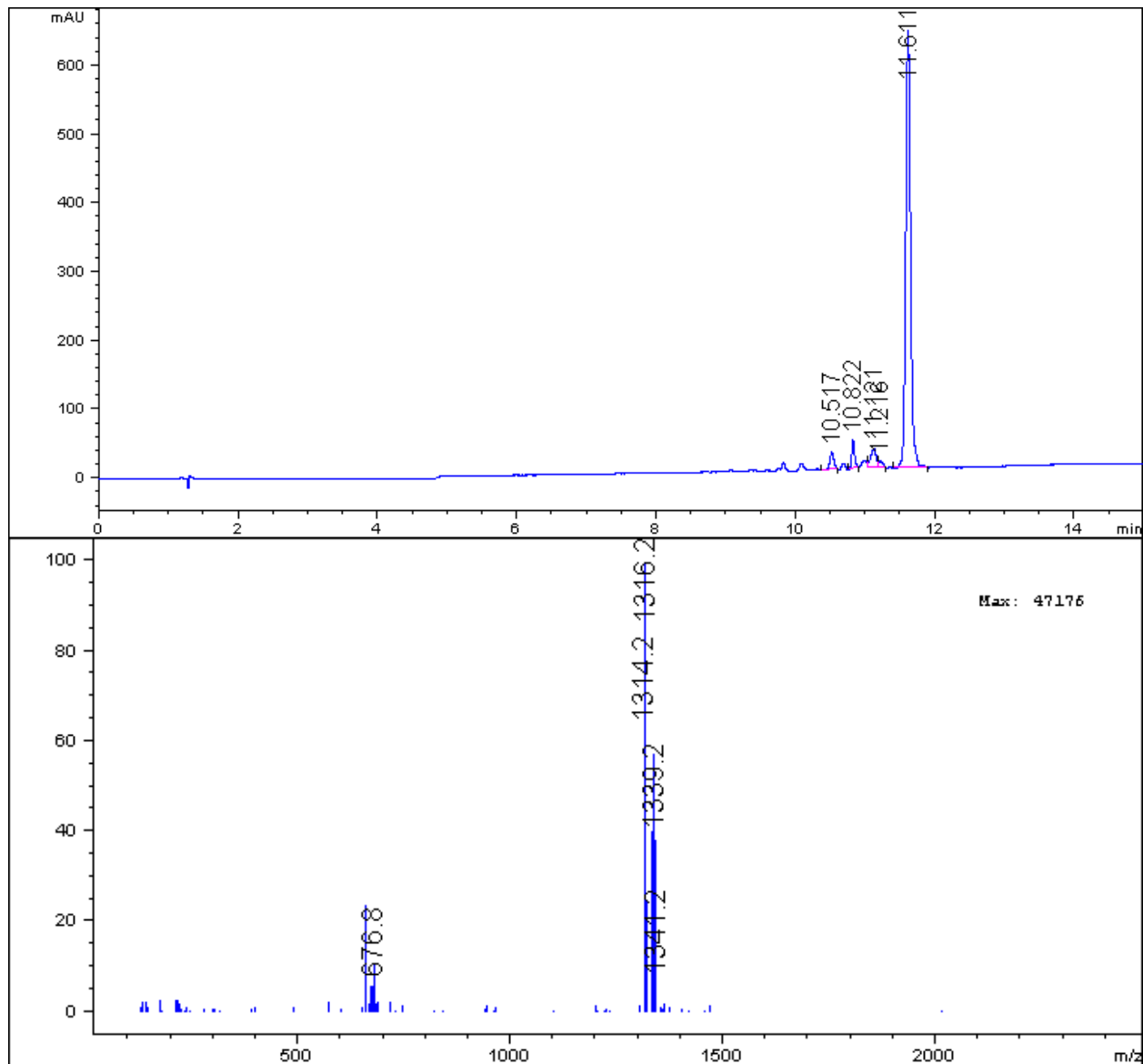


71%

X₁-1d-X₃-Linker

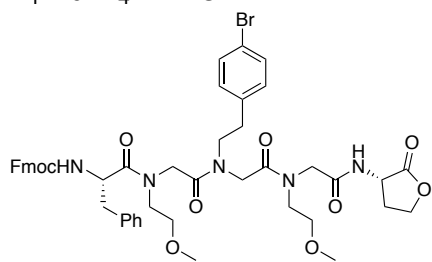


Exact Mass: 1314.48



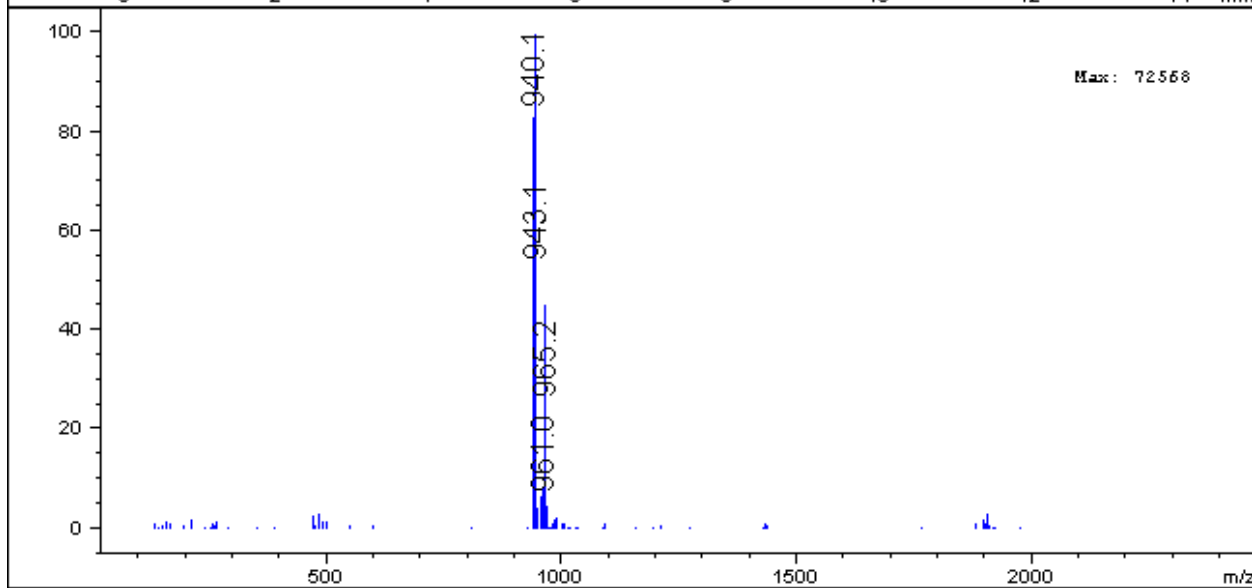
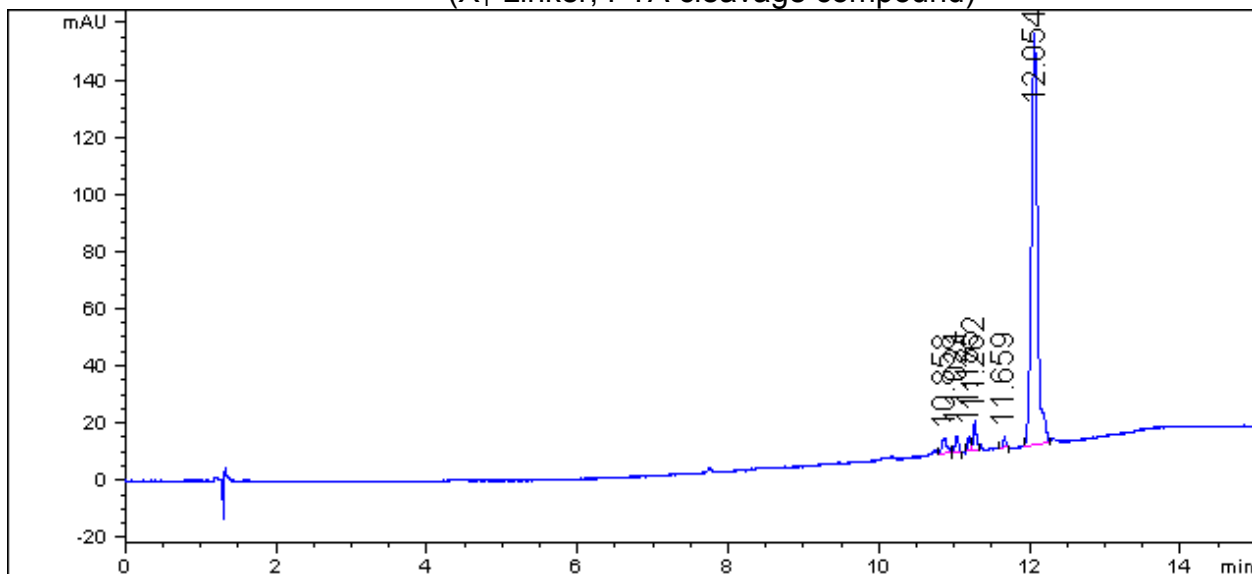
88%

X₁-1d-X₄-Linker



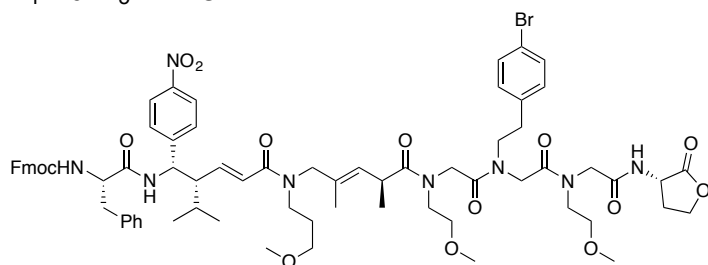
Exact Mass: 939.31

(X₁-Linker, PTA cleavage compound)

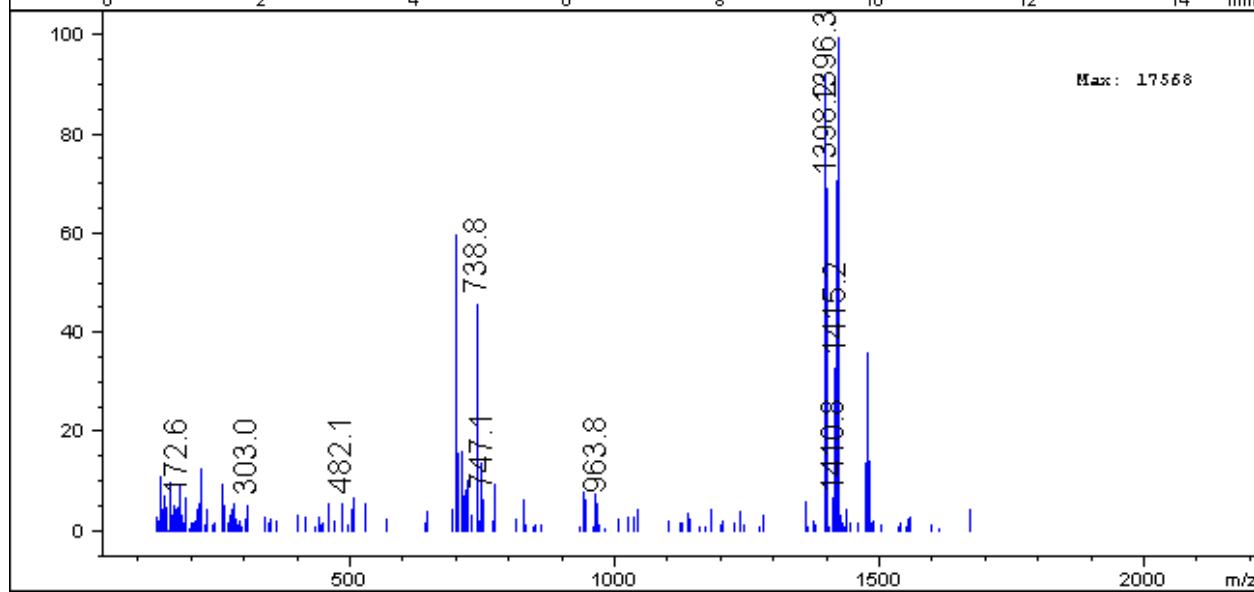
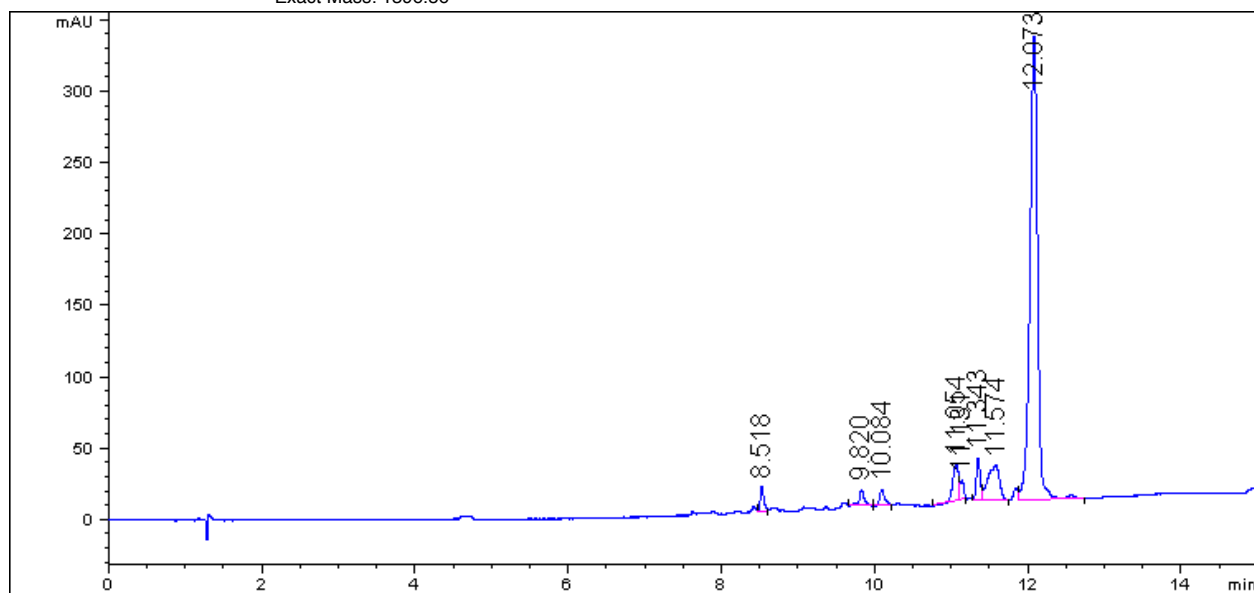


90%

X₁-1d-X₅-Linker

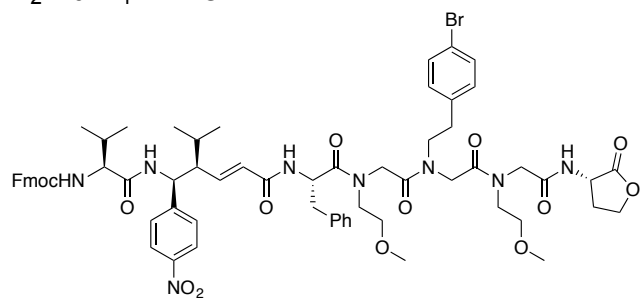


Exact Mass: 1396.56

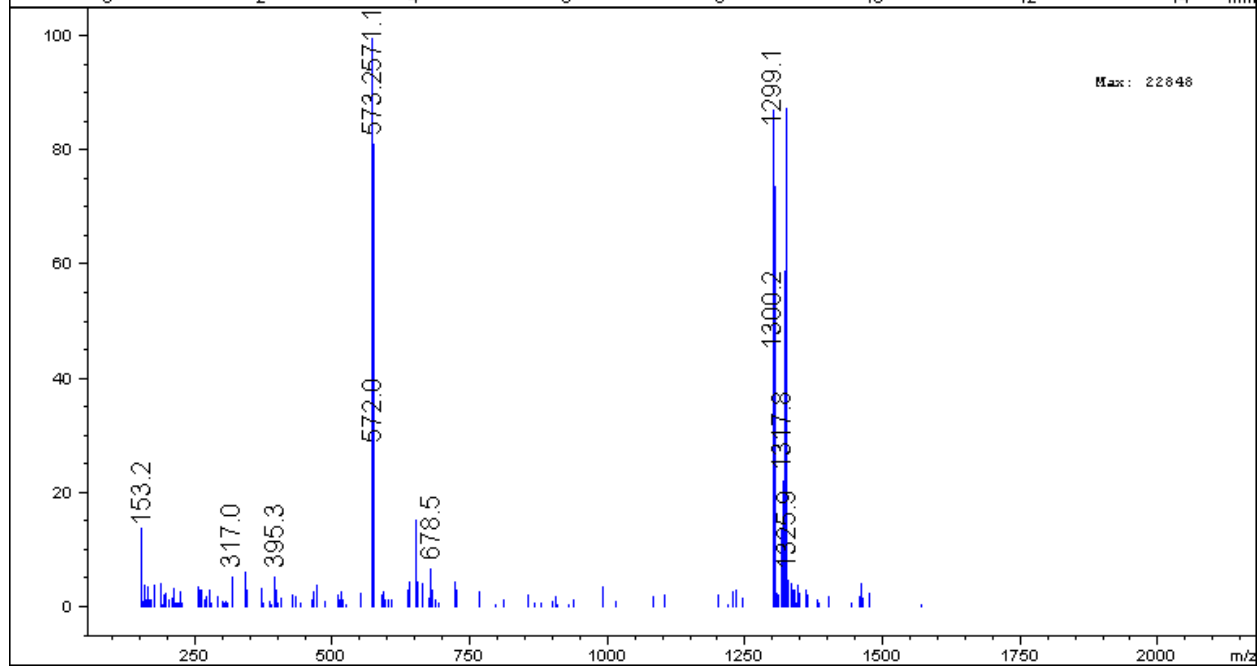
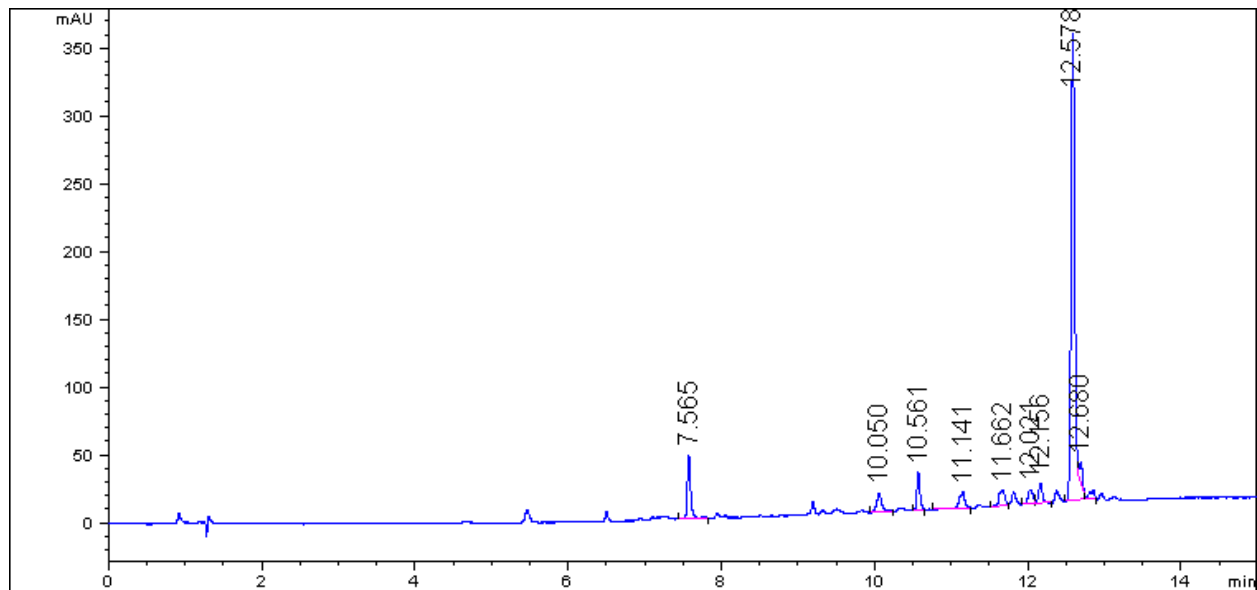


71%

X₂-1d-X₁-Linker

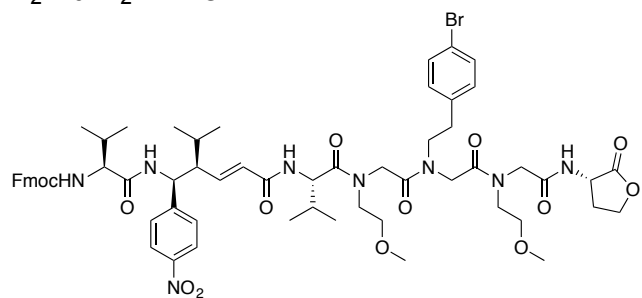


Exact Mass: 1298.49

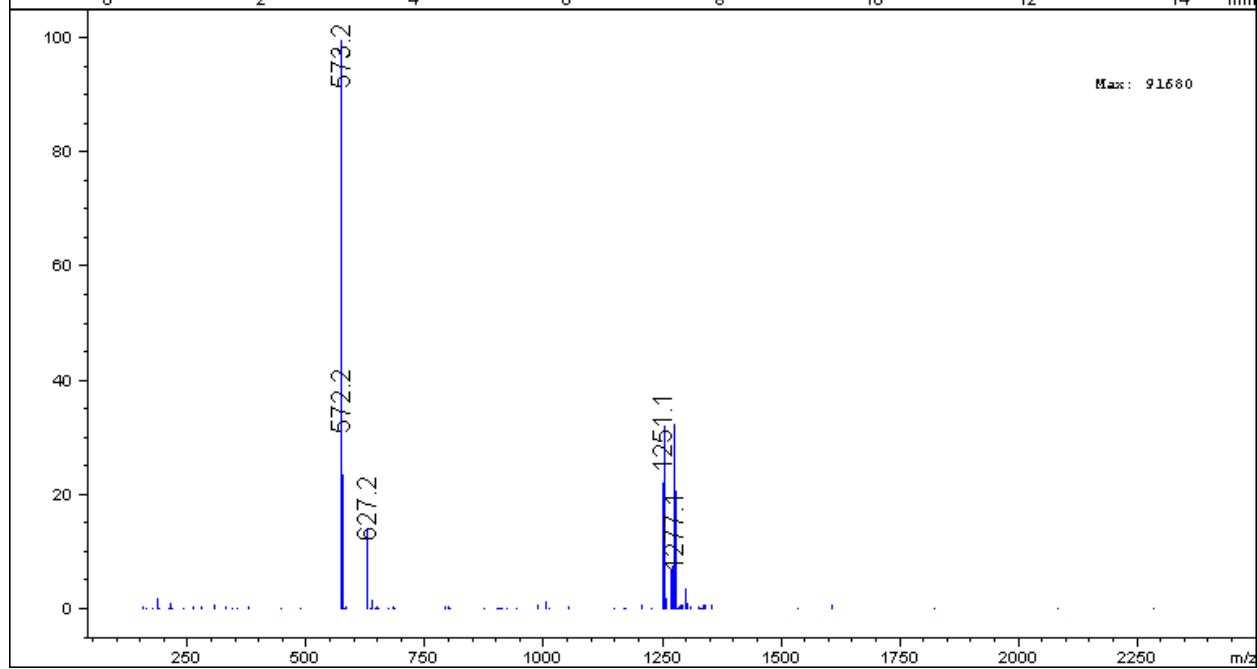
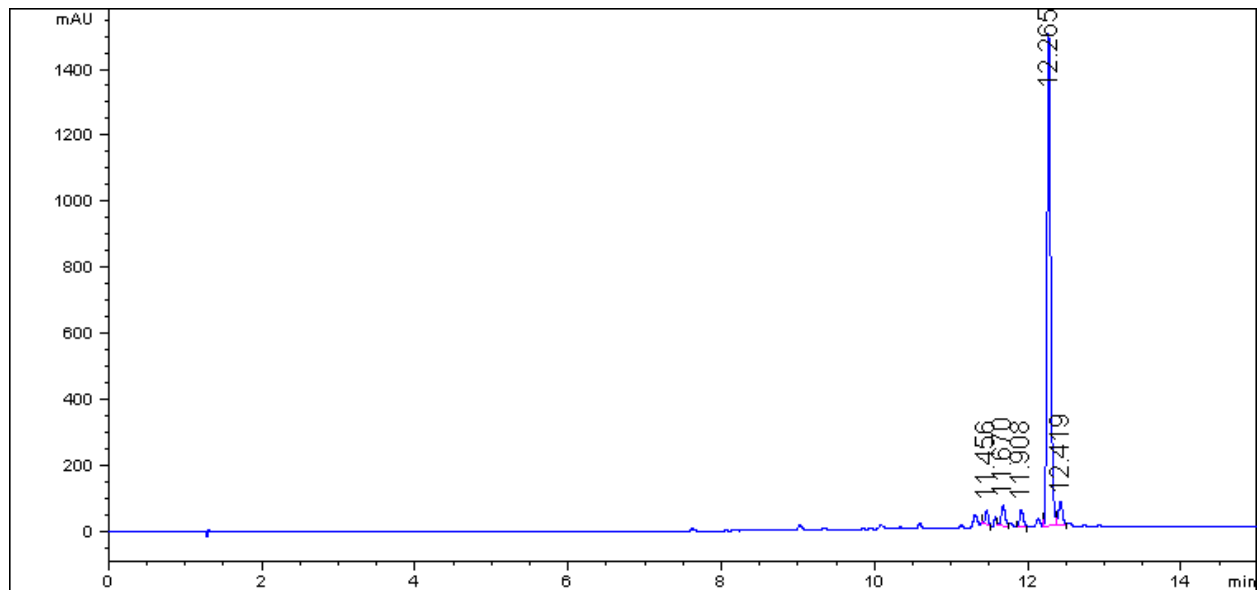


70%

X₂-1d-X₂-Linker

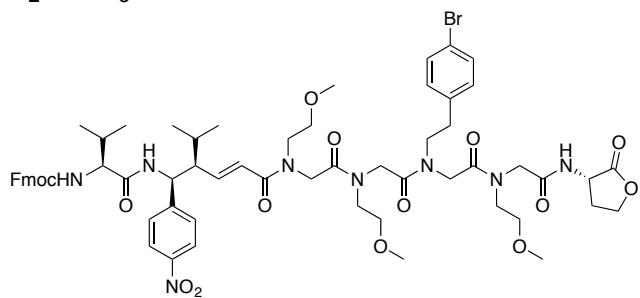


Exact Mass: 1250.49

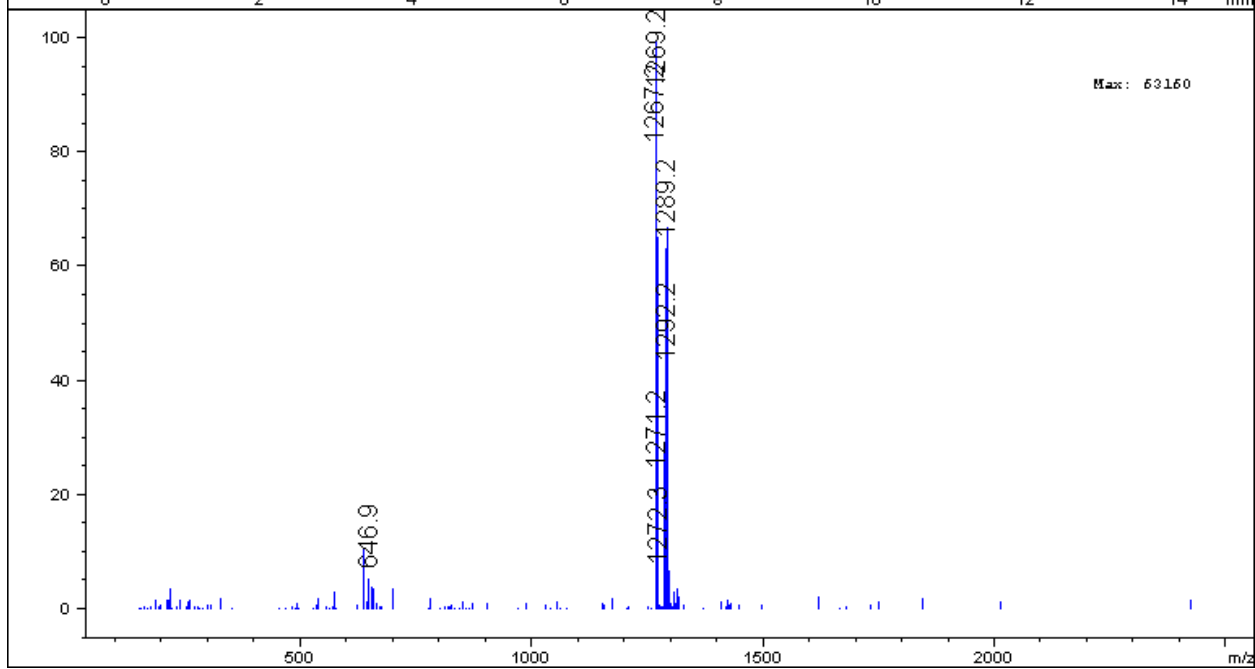
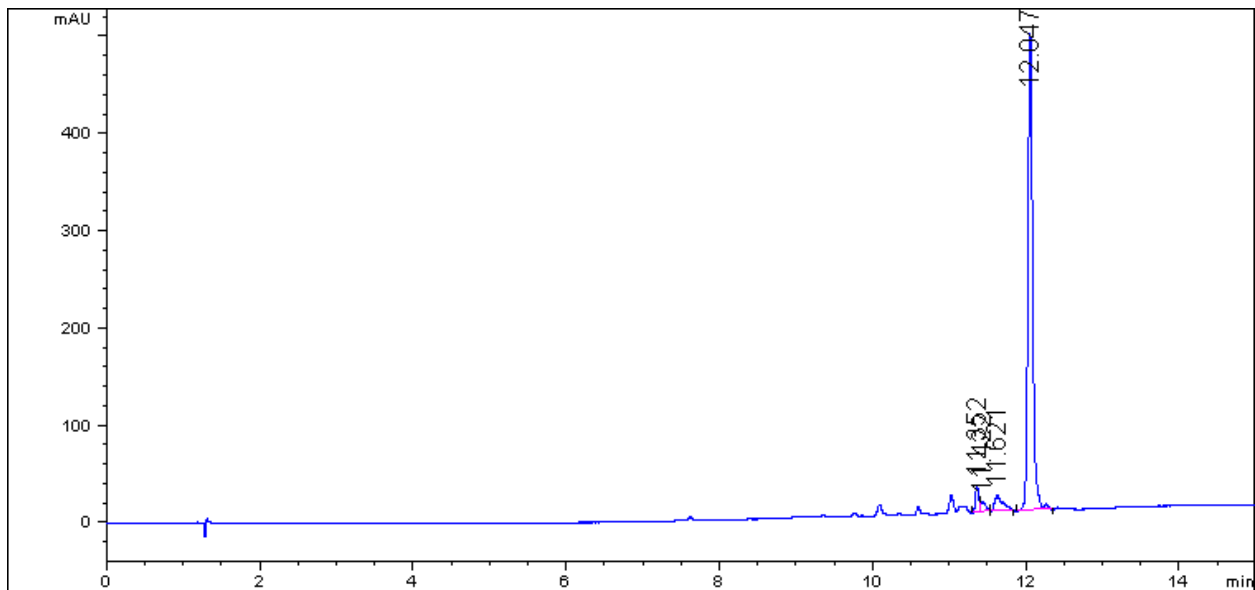


86%

X₂-1d-X₃-Linker

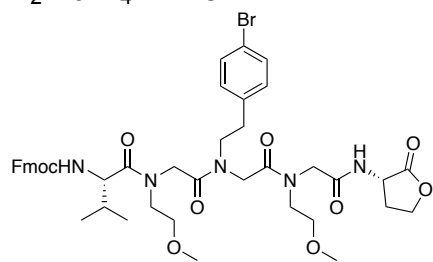


Exact Mass: 1266.48



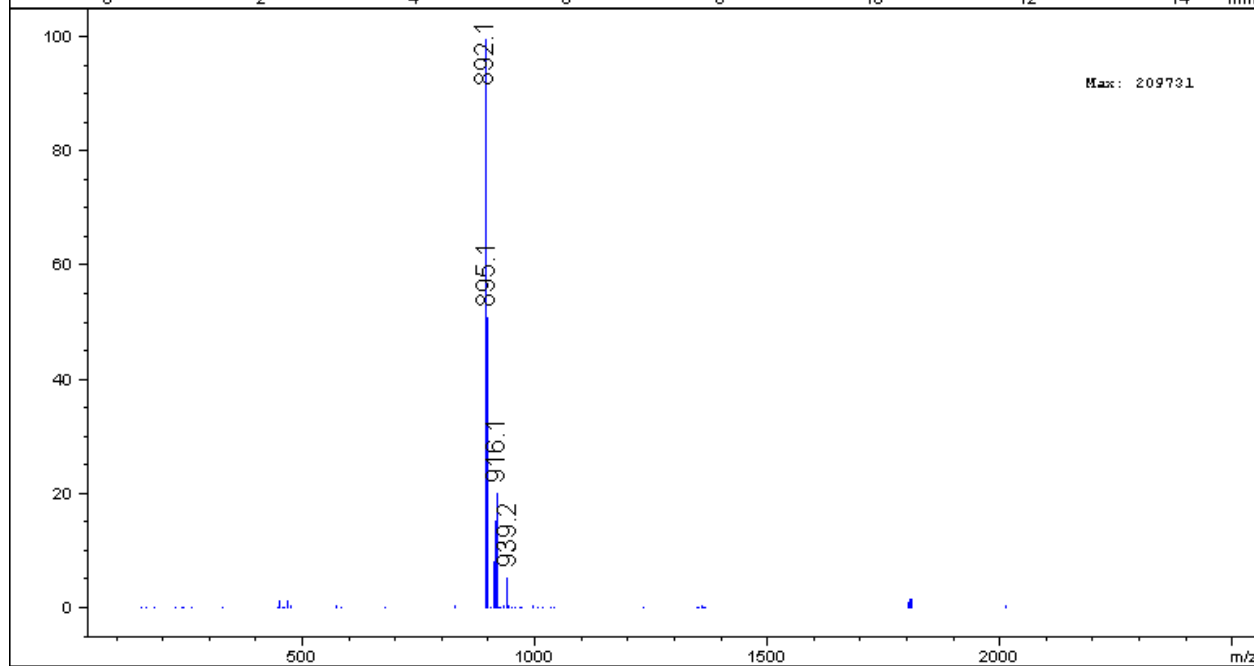
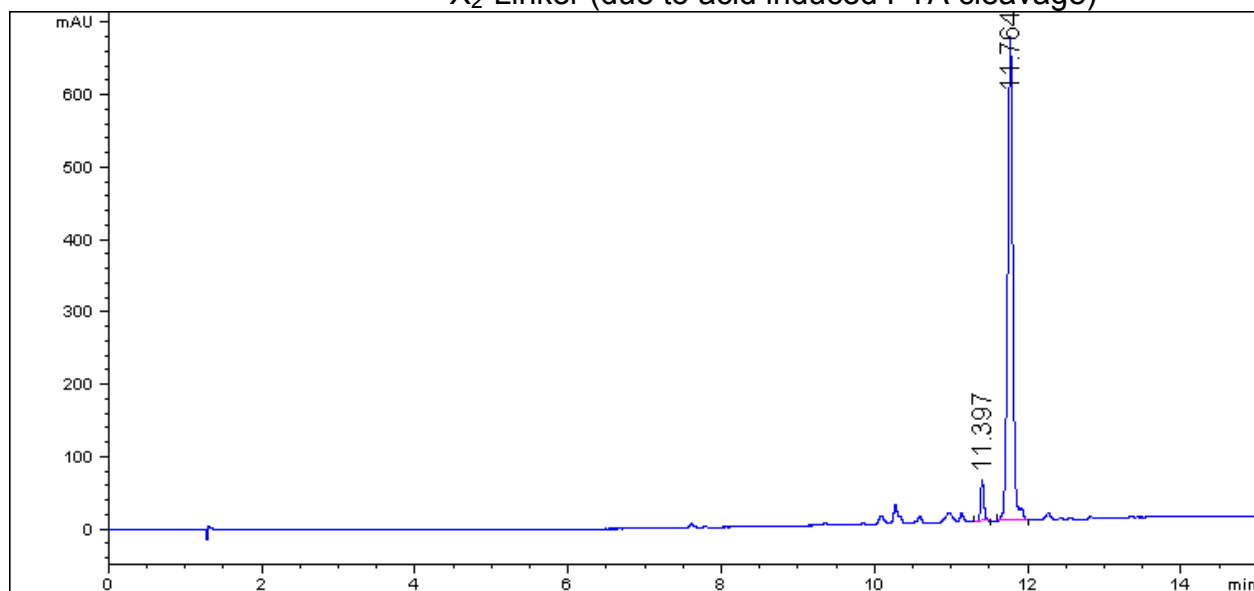
90%

X₂-1d-X₄-Linker



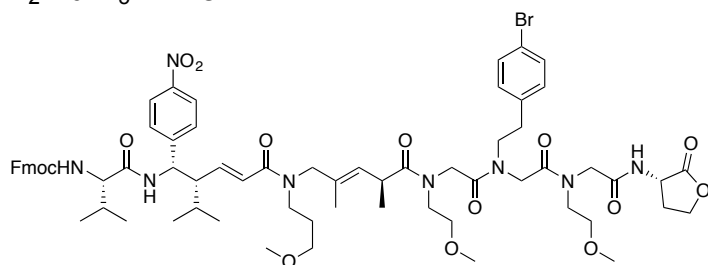
Exact Mass: 891.31

X₂-Linker (due to acid induced PTA cleavage)

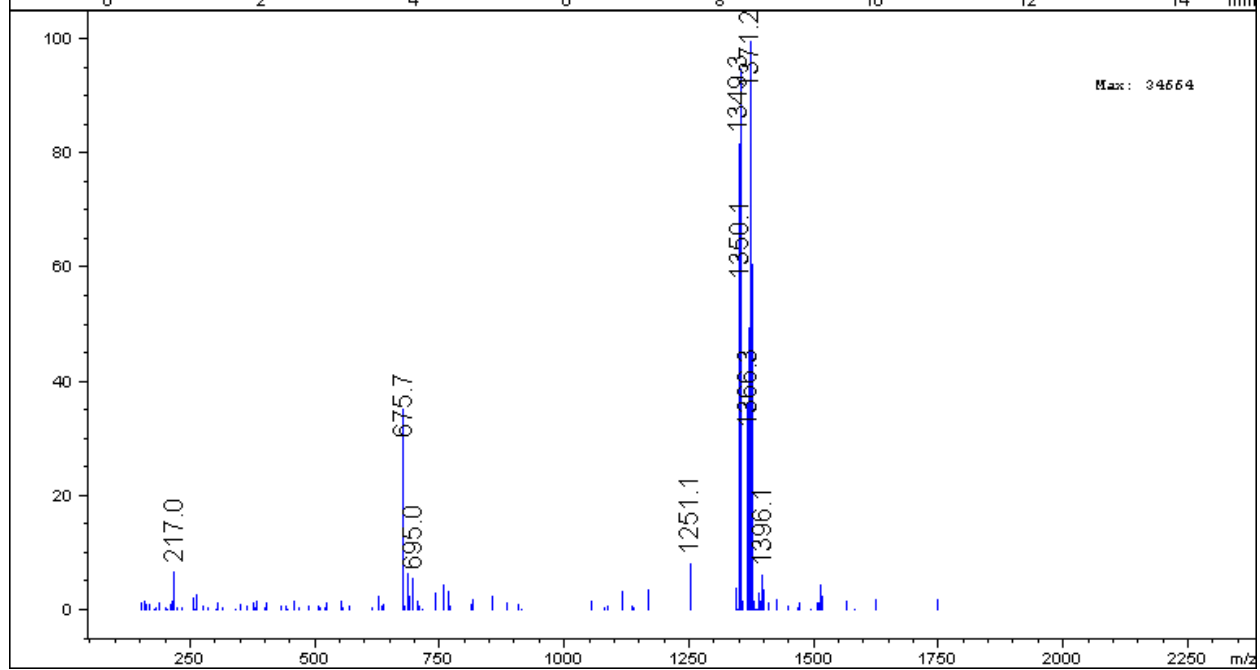
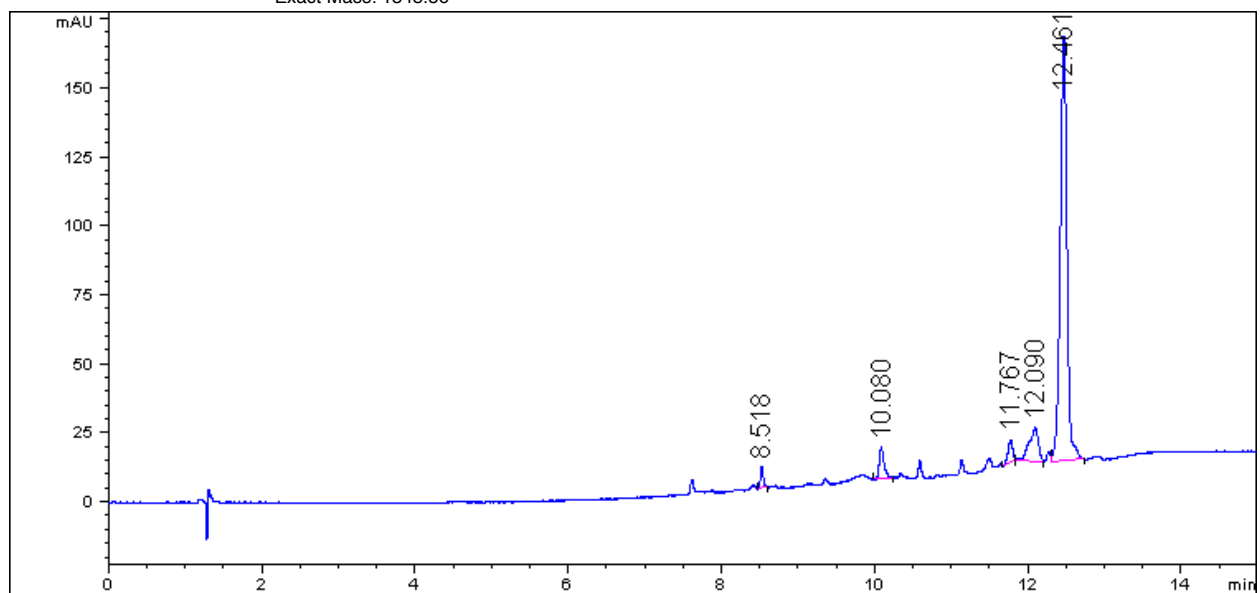


95%

X₂-1d-X₅-Linker



Exact Mass: 1348.56



82%