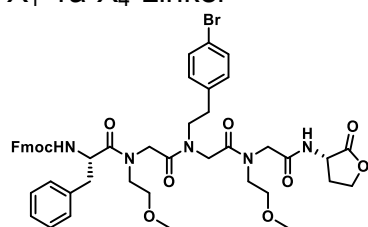
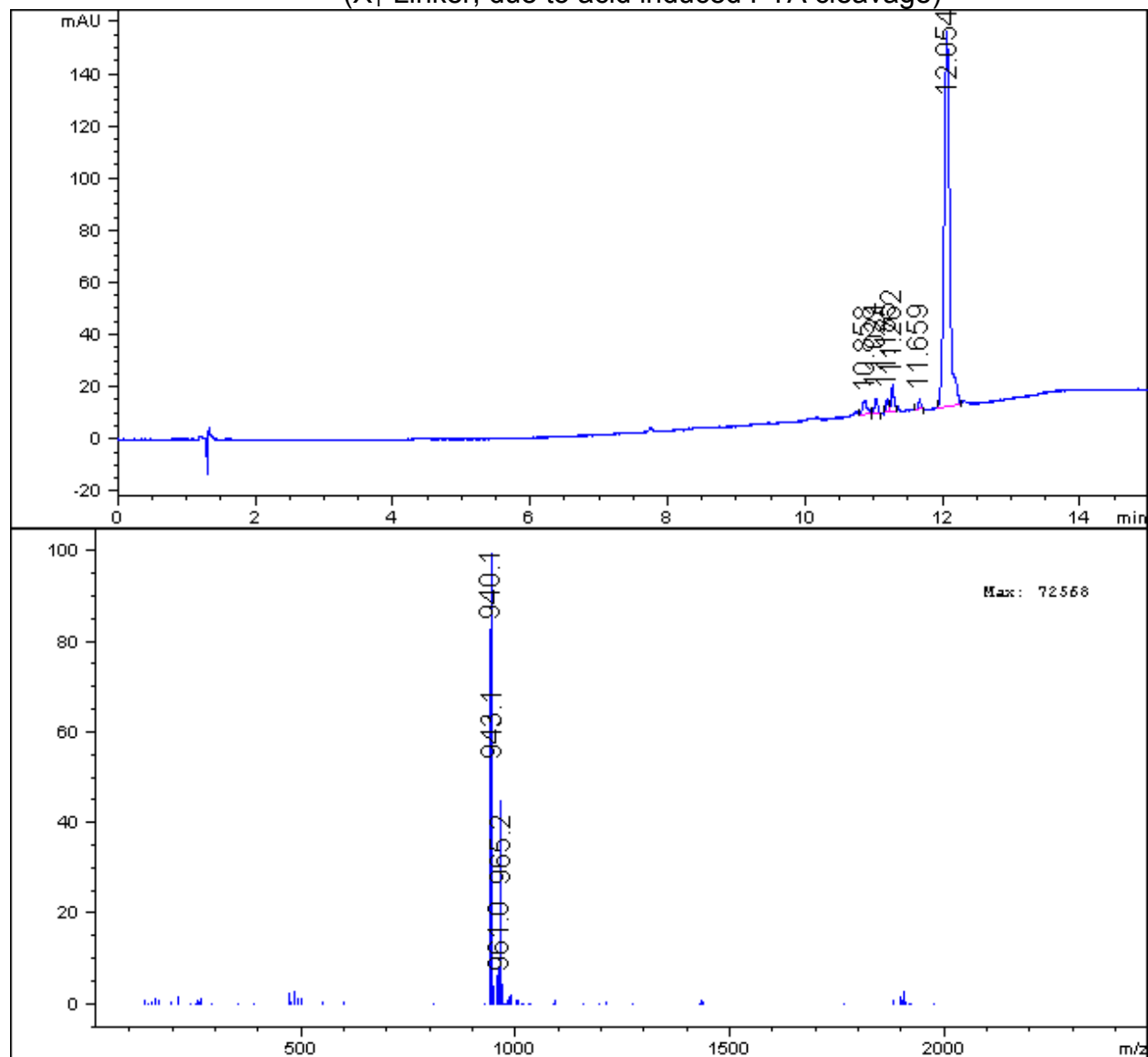


X<sub>1</sub>-1a-X<sub>4</sub>-Linker



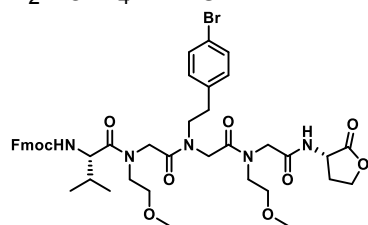
Exact Mass: 939.3054

(X<sub>1</sub>-Linker, due to acid induced PTA cleavage)



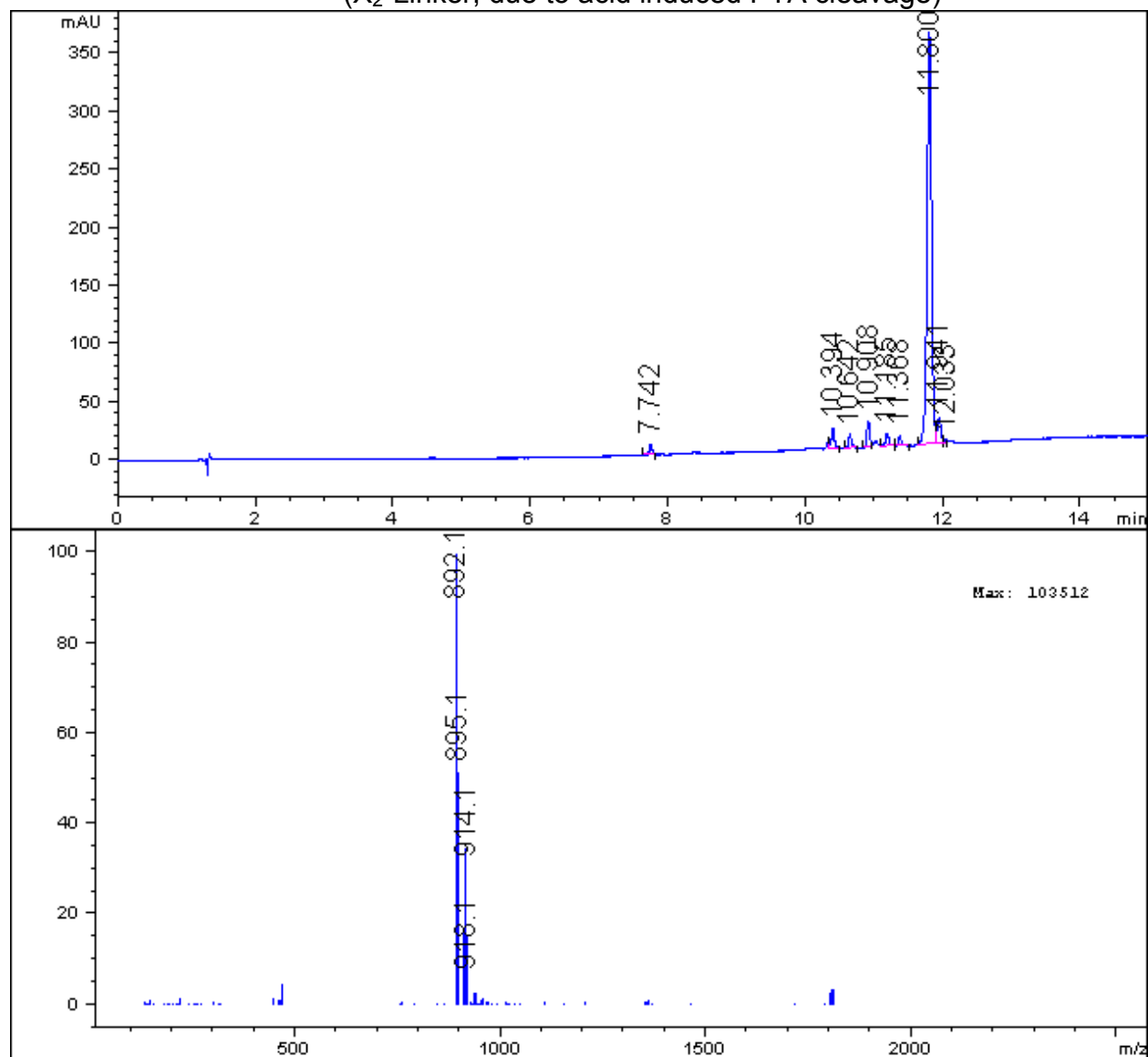
89%

# X<sub>2</sub>-1a-X<sub>4</sub>-Linker



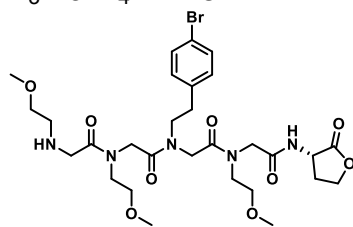
Exact Mass: 891.3054

(X<sub>2</sub>-Linker, due to acid induced PTA cleavage)



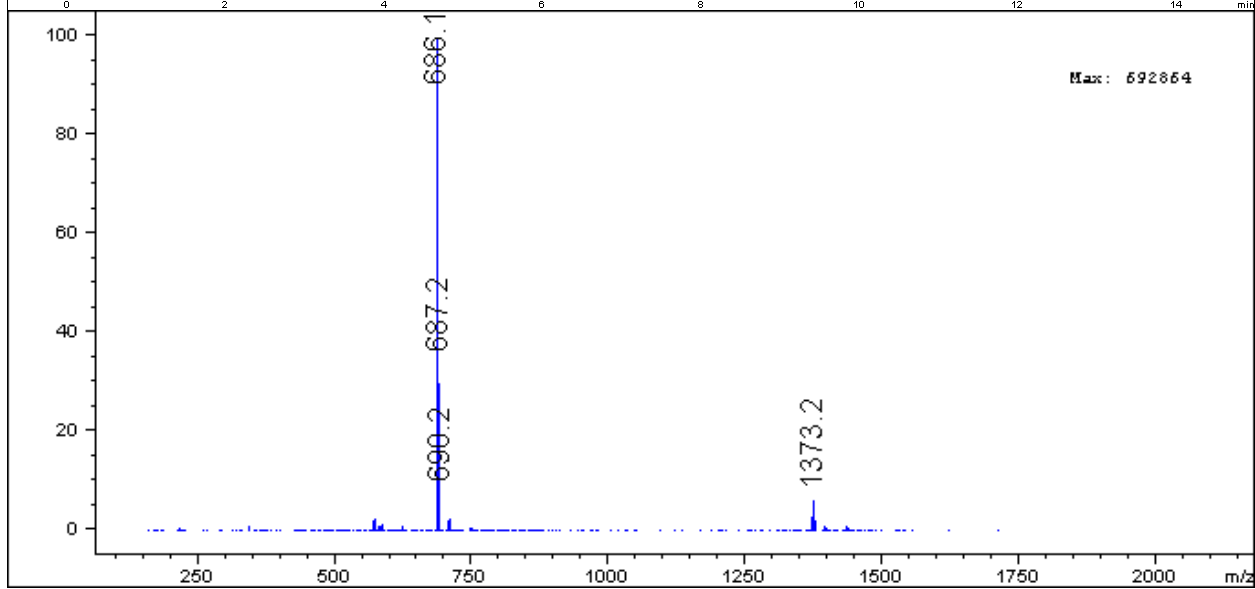
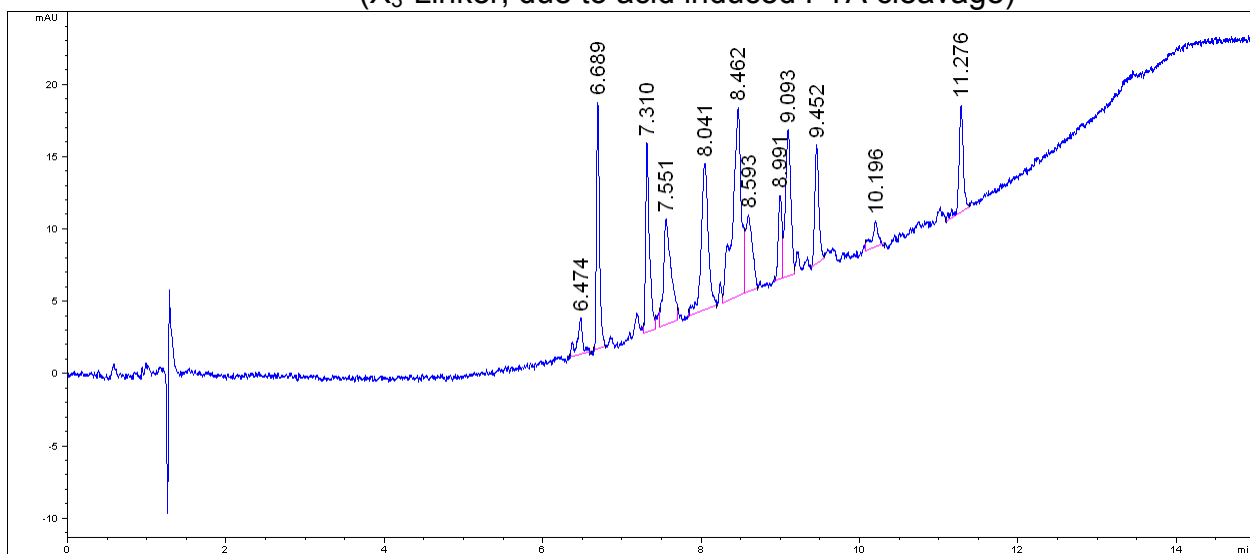
82%

# X<sub>3</sub>-1a-X<sub>4</sub>-Linker



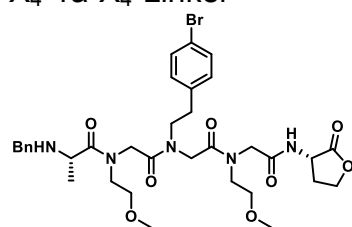
Exact Mass: 685.2322

(X<sub>3</sub>-Linker, due to acid induced PTA cleavage)



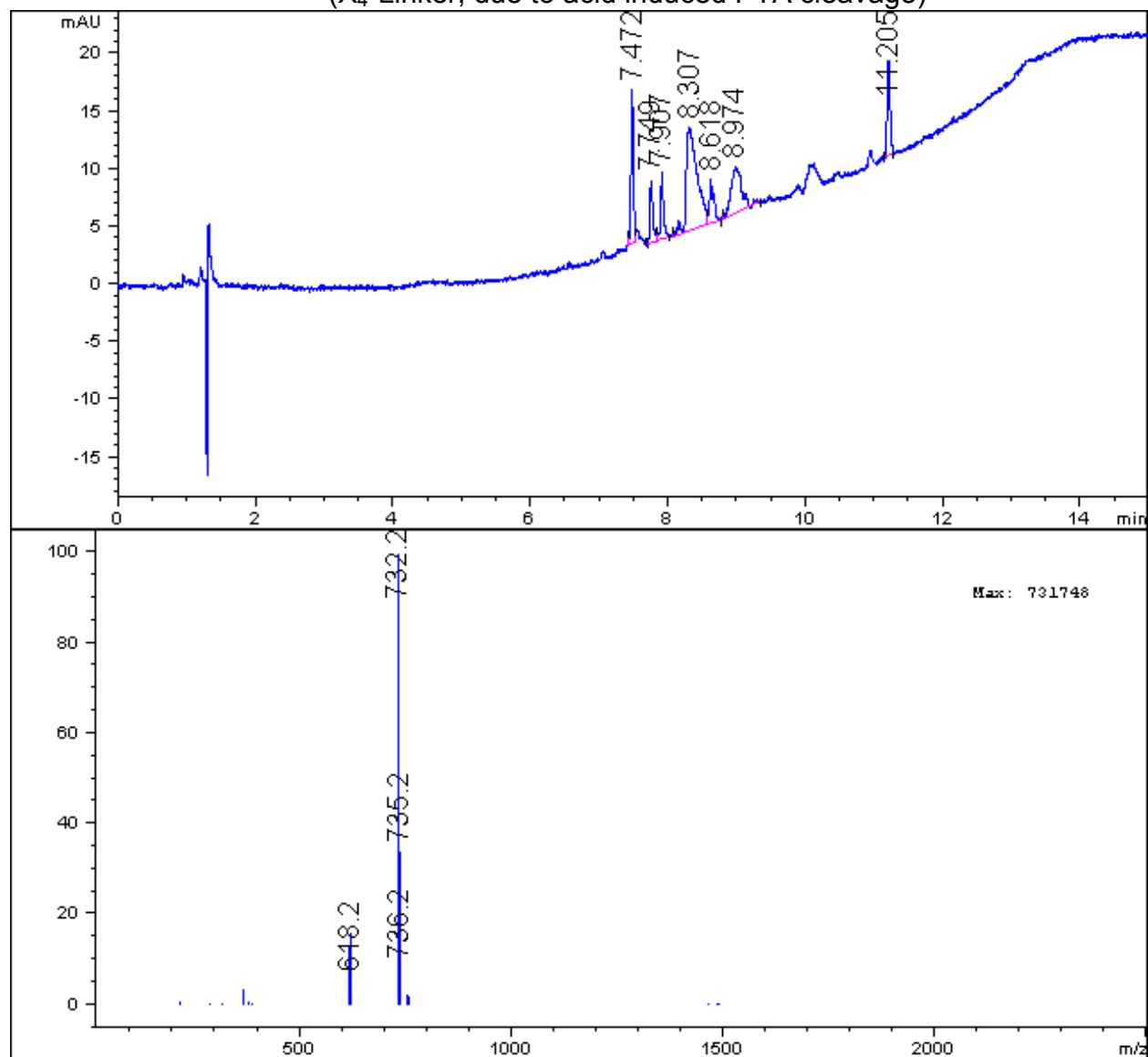
10% 7.551 min, [M+43] 13% 8.041 min

# X<sub>4</sub>-1a-X<sub>4</sub>-Linker



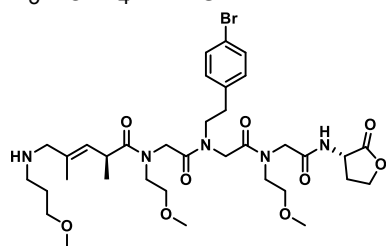
Exact Mass: 731.2530

(X<sub>4</sub>-Linker, due to acid induced PTA cleavage)



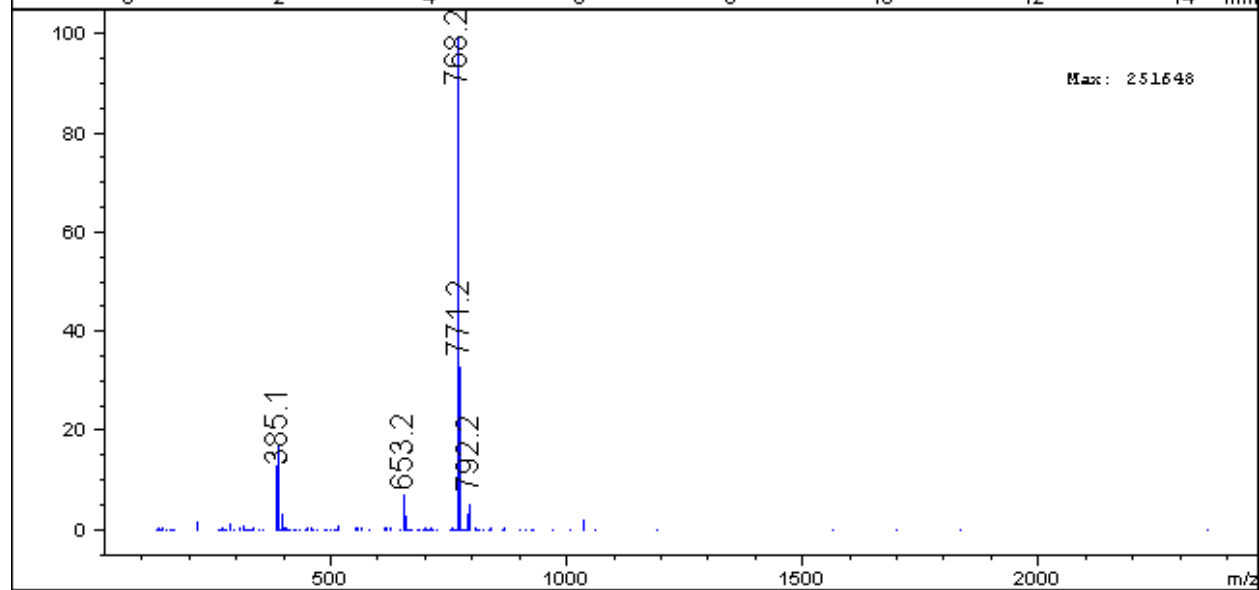
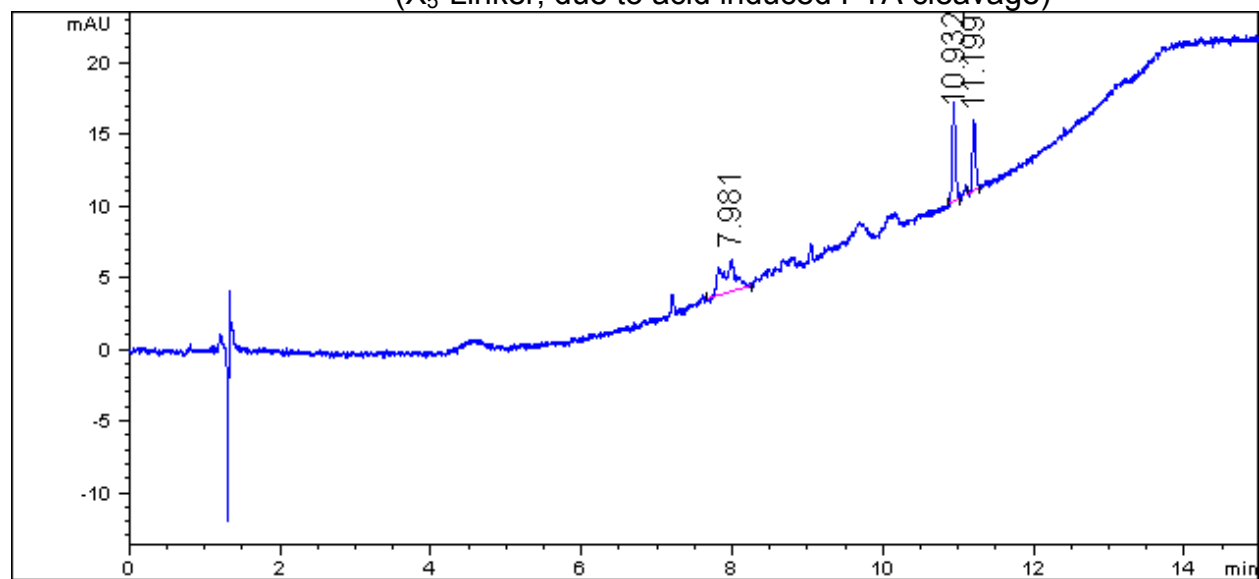
40%

# X<sub>5</sub>-1a-X<sub>4</sub>-Linker



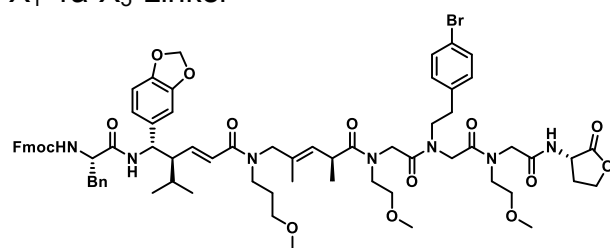
Exact Mass: 767.3105

(X<sub>5</sub>-Linker, due to acid induced PTA cleavage)

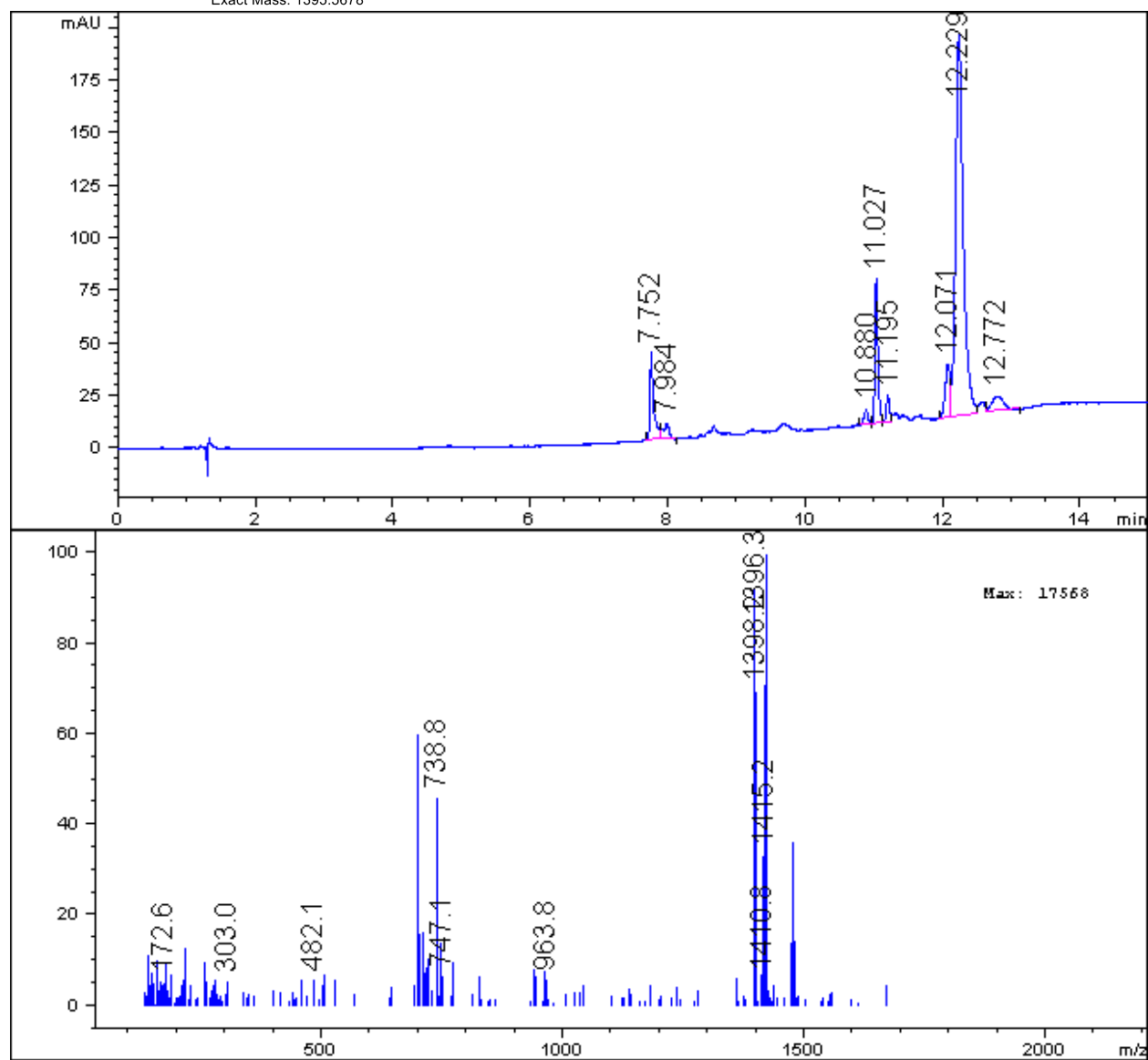


45%

# X<sub>1</sub>-1a-X<sub>5</sub>-Linker

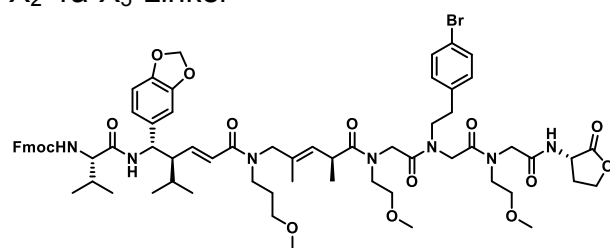


Exact Mass: 1395.5678

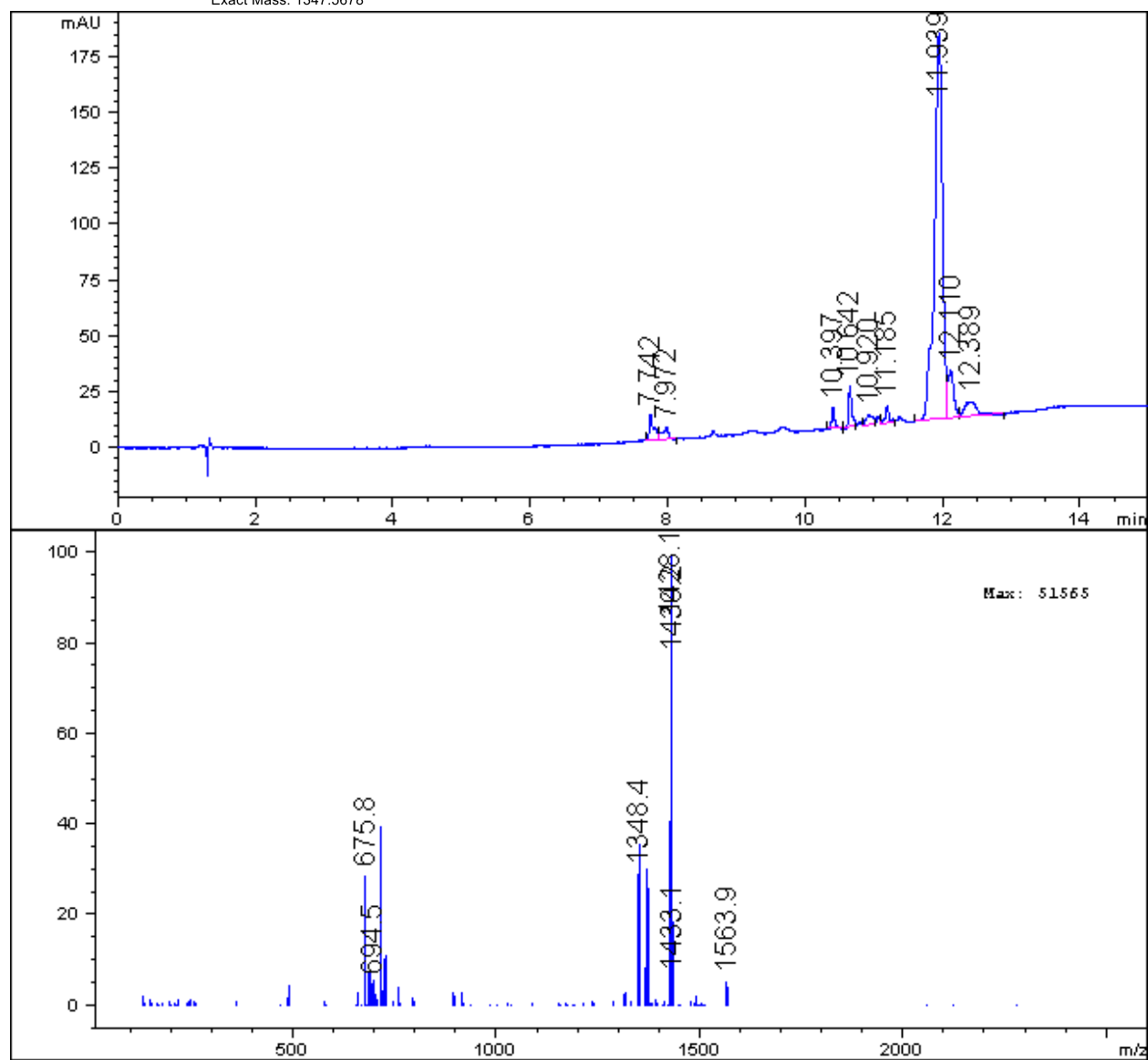


67%

# X<sub>2</sub>-1a-X<sub>5</sub>-Linker

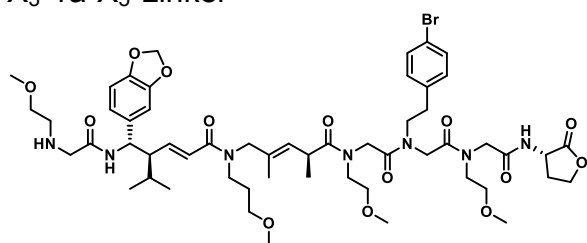


Exact Mass: 1347.5678

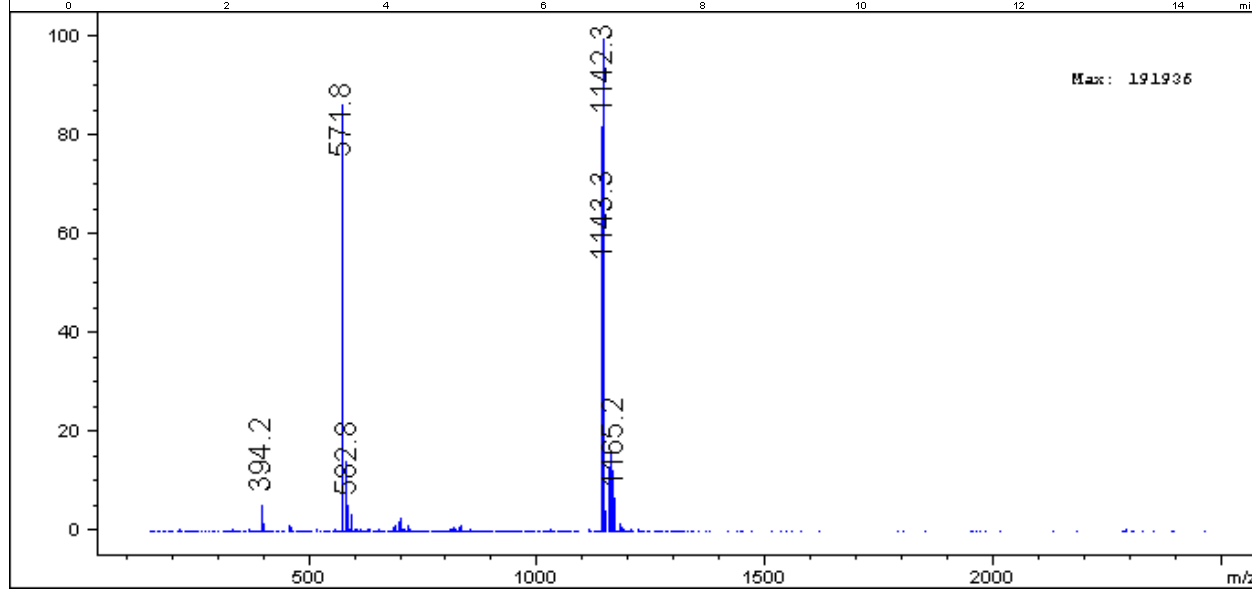
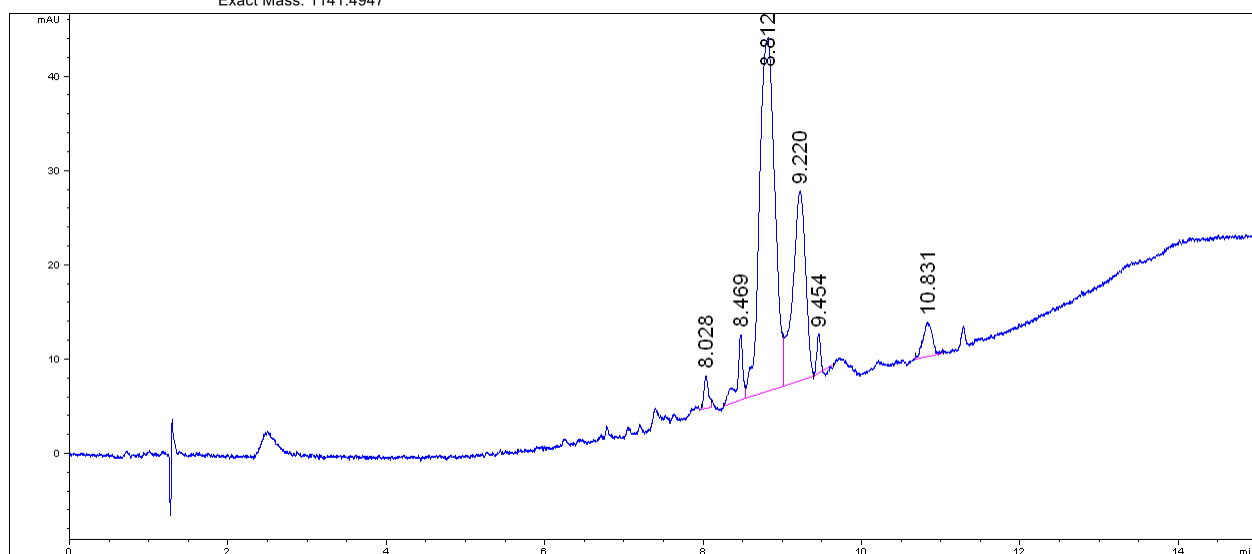


75%

# X3-1a-X5-Linker



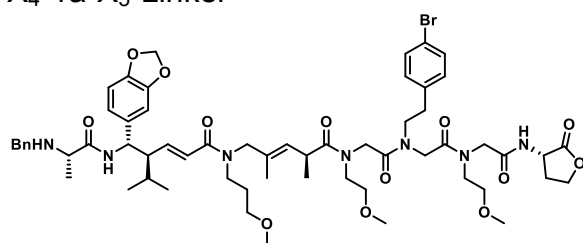
Exact Mass: 1141.4947



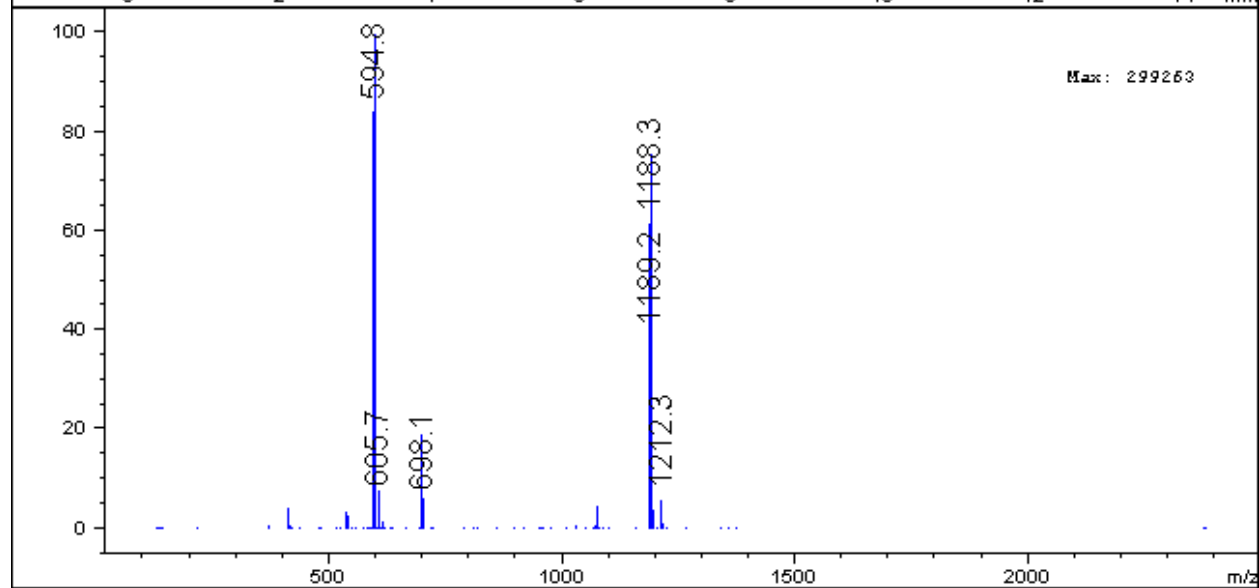
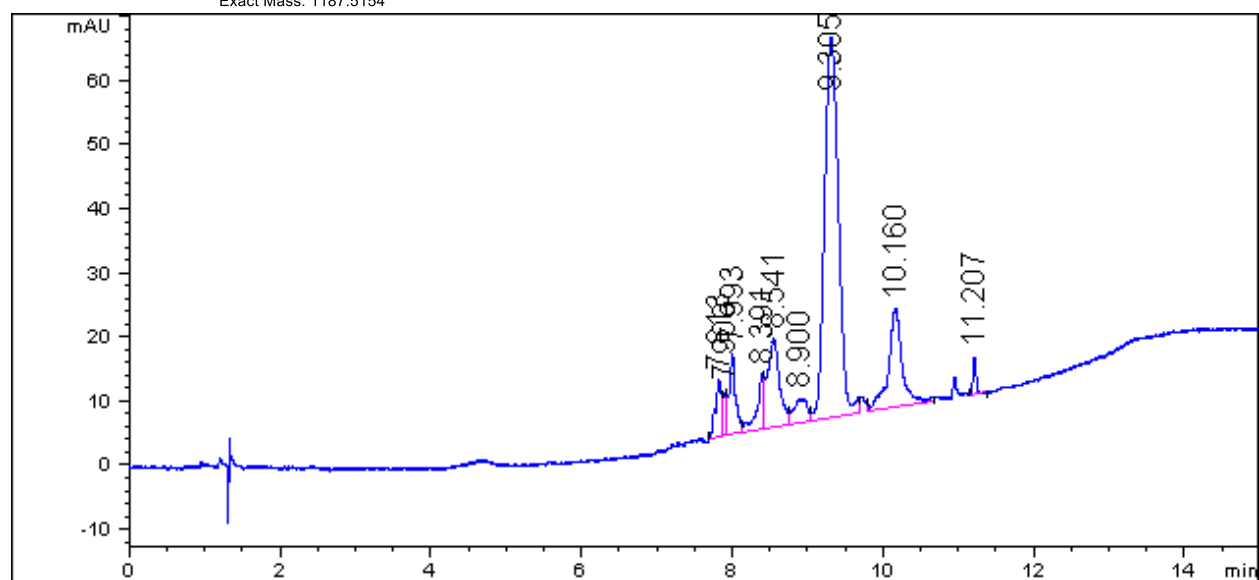
60% 8.812 min, [M+43] 27% 9.220 min



# X<sub>4</sub>-1a-X<sub>5</sub>-Linker

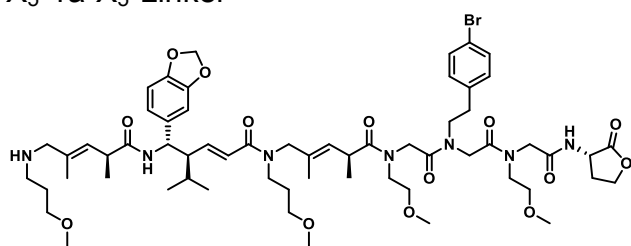


Exact Mass: 1187.5154

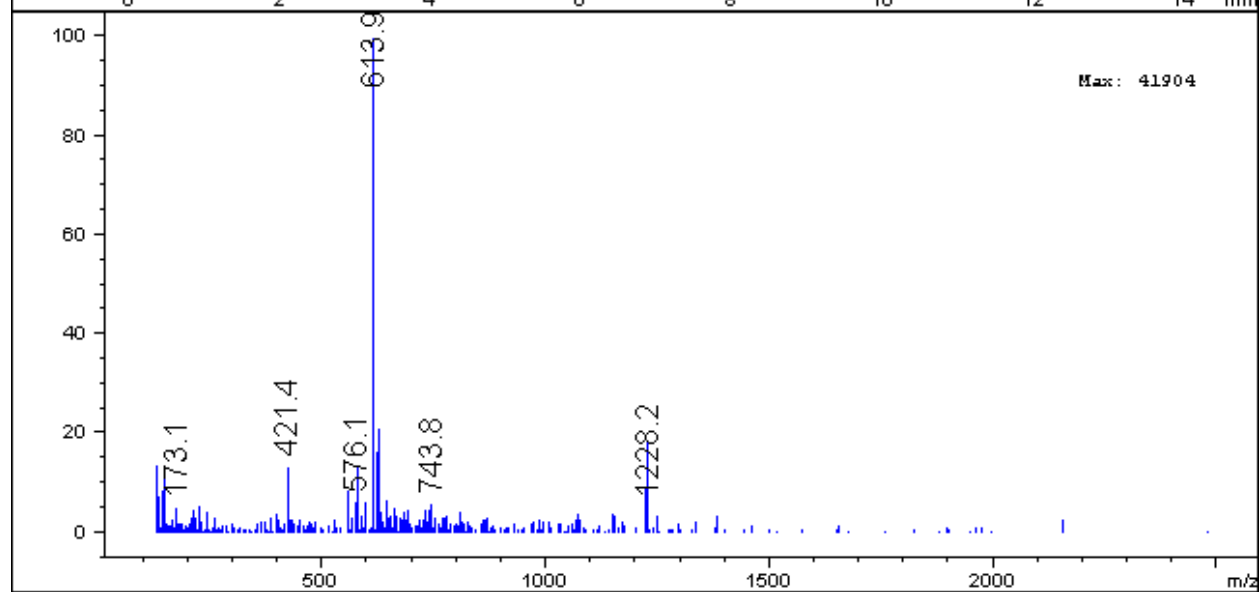
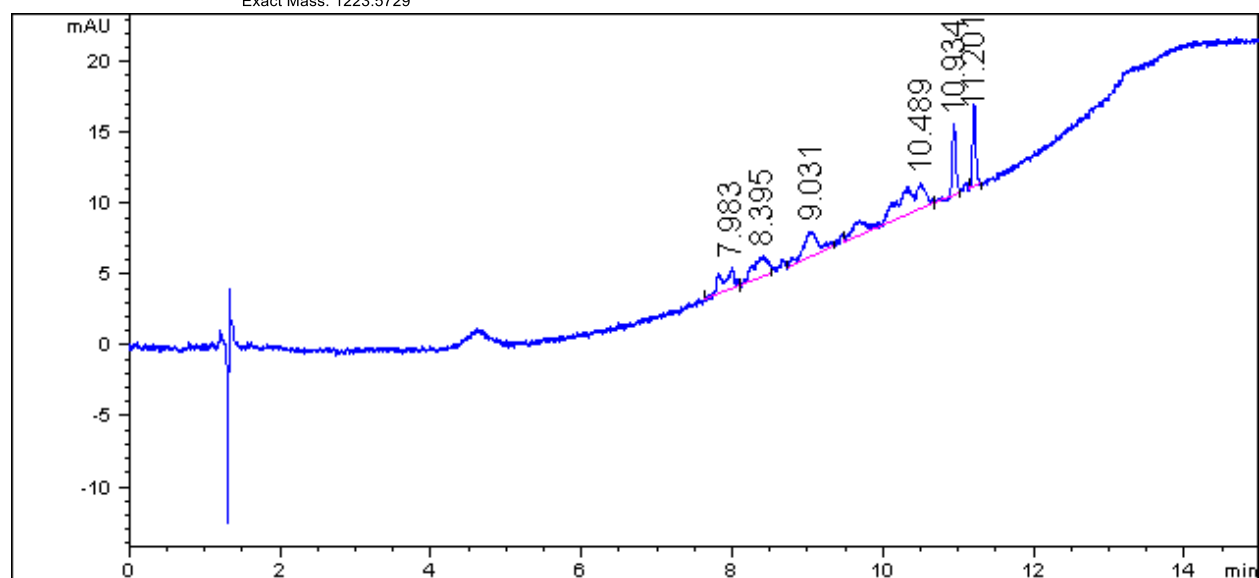


55% 9.305 min, [M+43] 15% 10.160 min

# X<sub>5</sub>-1a-X<sub>5</sub>-Linker



Exact Mass: 1223.5729



10%