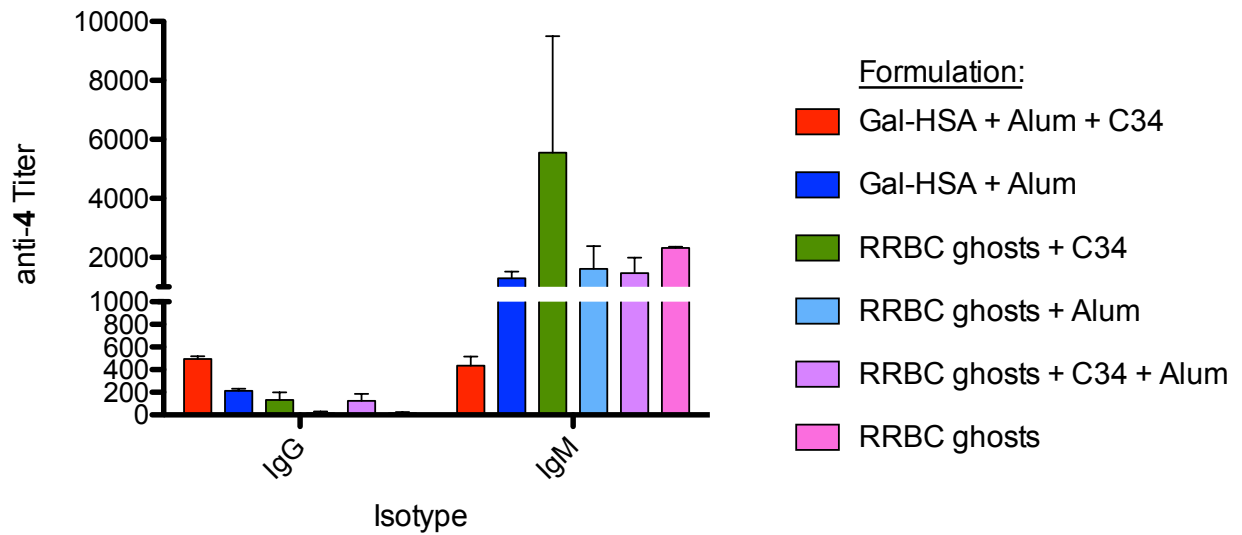


## Supplementary Information 1

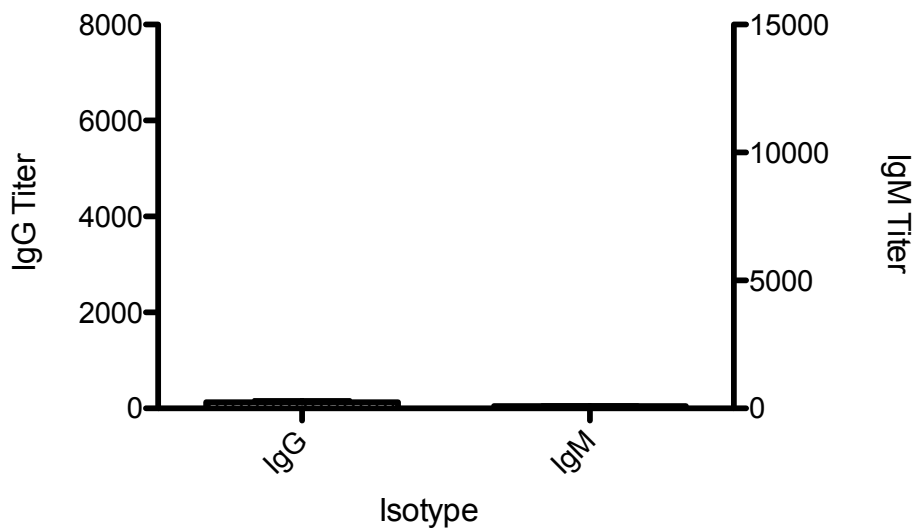
### The design and synthesis of an $\alpha$ -Gal trisaccharide epitope that provides a highly specific anti-Gal immune response

Kensaku Anraku, Shun Sato, Nicholas T. Jacob, Lisa M. Eubanks, Beverly A. Ellis and Kim D. Janda

Contents :	Page
Supplementary Figure 1 :	2
Supplementary Figure 2 :	2
<sup>1</sup> H NMR and <sup>13</sup> C spectra (compound <b>8-17</b> , <b>1-3</b> ) :	3-26



Supplementary Figure 1: ELISA titers of mice vaccinated with RRBC ghosts or an HAS glycoconjugate using C34 and alum as adjuvants. Hapten used: Gal $\alpha$ 1-3Gal $\beta$ 1-4GlcNAc-C3 (V-Labs, NGP2334).



Supplementary Figure 2: Titers of sham vaccinated  $\alpha$ GalT-KO mice at 51 days. n = 5.

$^1\text{H}$ ,  $^{13}\text{C}$  NMR spectra (compound 8-17, 1-3)

