

Protein-induced Fluorescence Enhancement of Two-Photon Excitable Water-Soluble Diketopyrrolopyrroles

Simon Tang,¹ Ebrahim H. Ghazvini Zadeh,² Bosung Kim,¹ Nikia T. Toomey,¹ Mykhailo. V. Bondar,³ and Kevin D. Belfield^{*4,5}

¹Department of Chemistry, University of Central Florida, Orlando, FL 32816, USA

²Department of Cell Biology, University of Texas, Dallas, TX 75235, USA

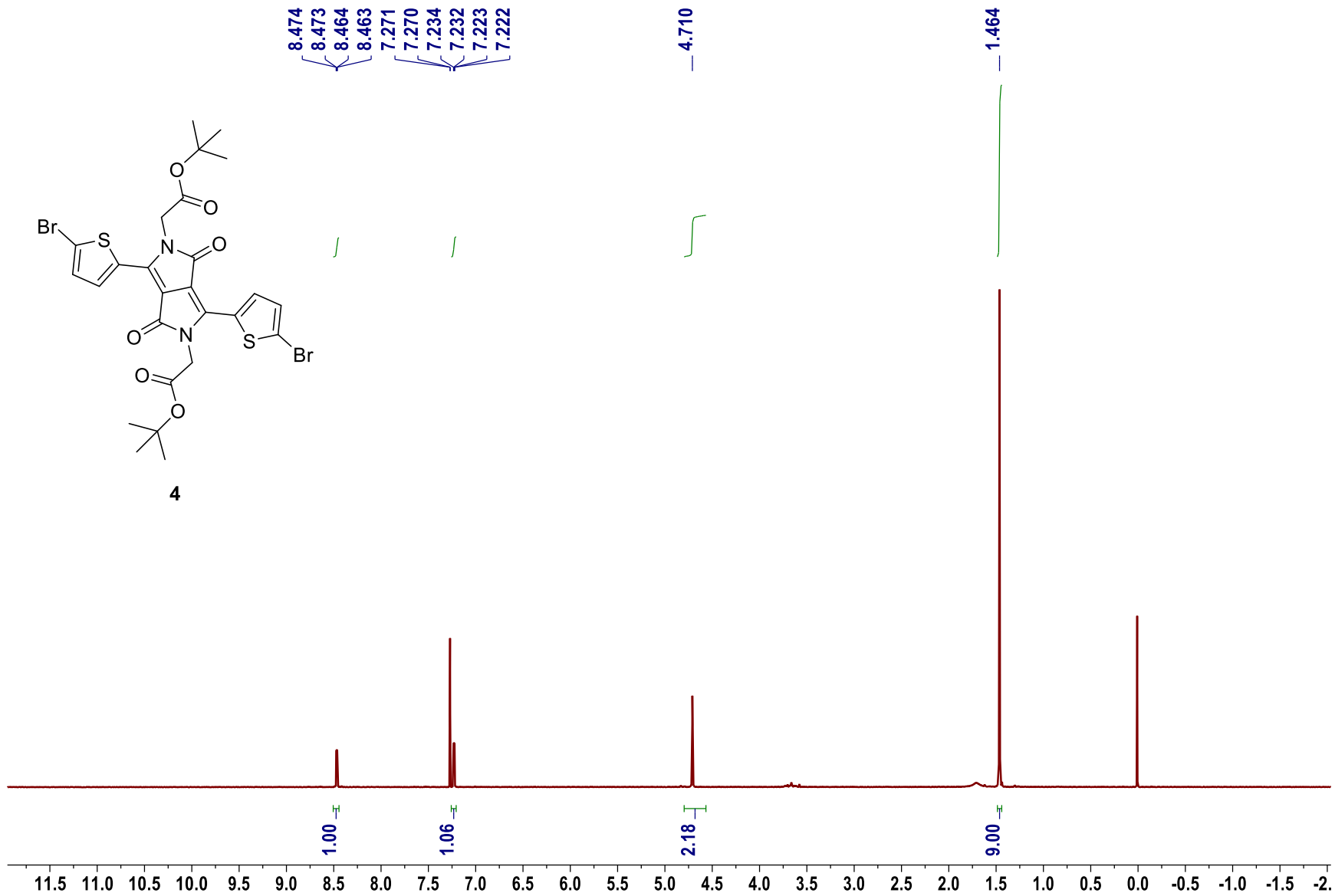
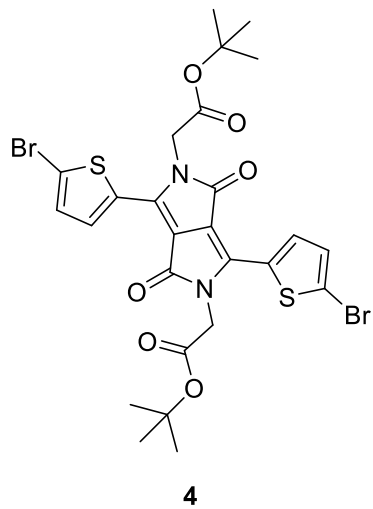
³Institute of Physics NASU, Prospect Nauki 46, Kiev 28, 03028, Ukraine

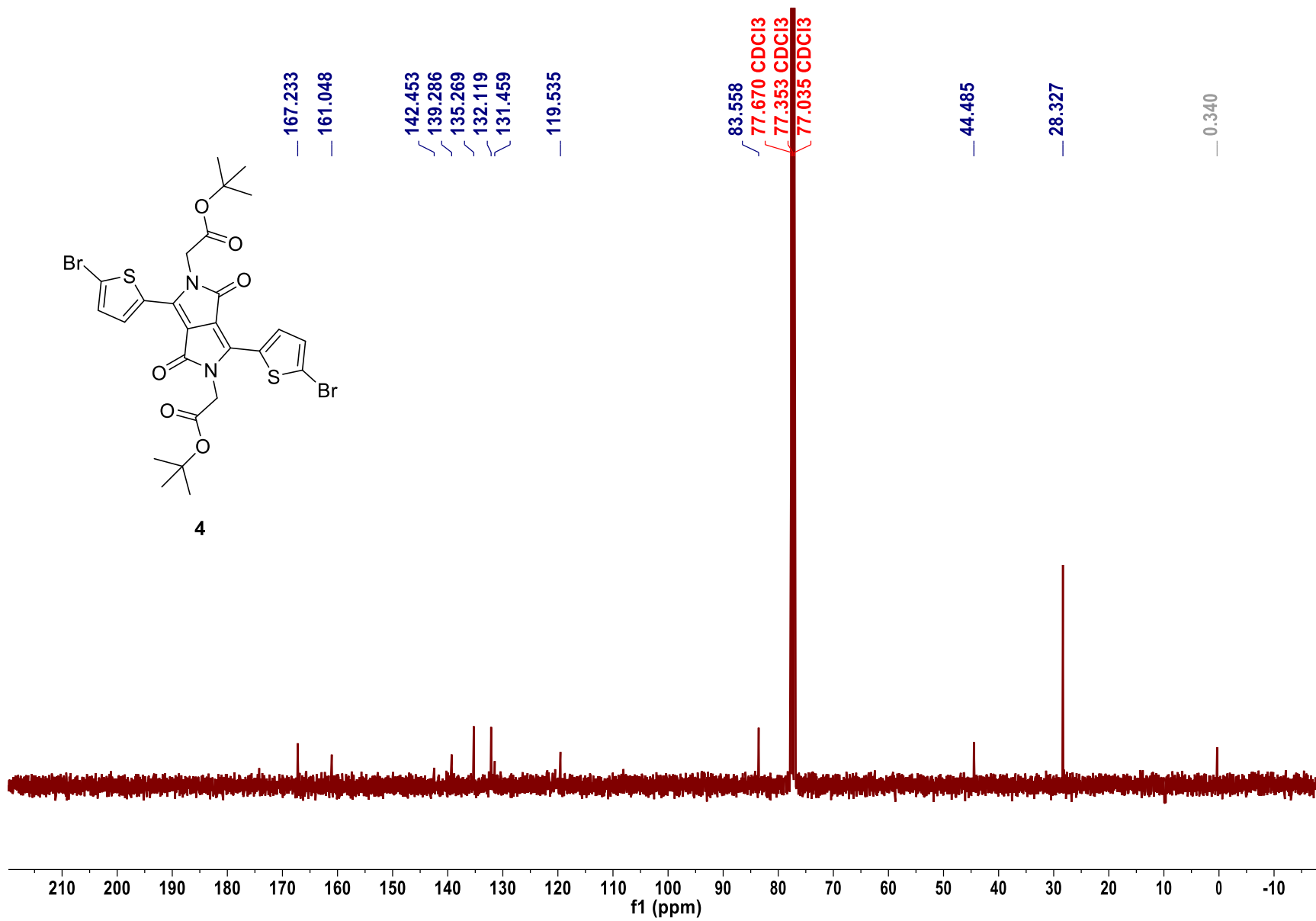
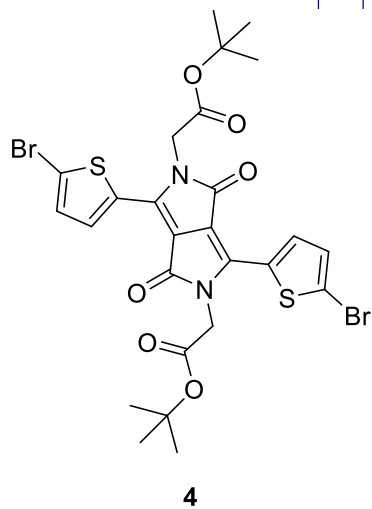
⁴Department of Chemistry and Environmental Science, College of Science and Liberal Arts, New Jersey Institute of Technology, University Heights, Newark, NJ 07102, USA

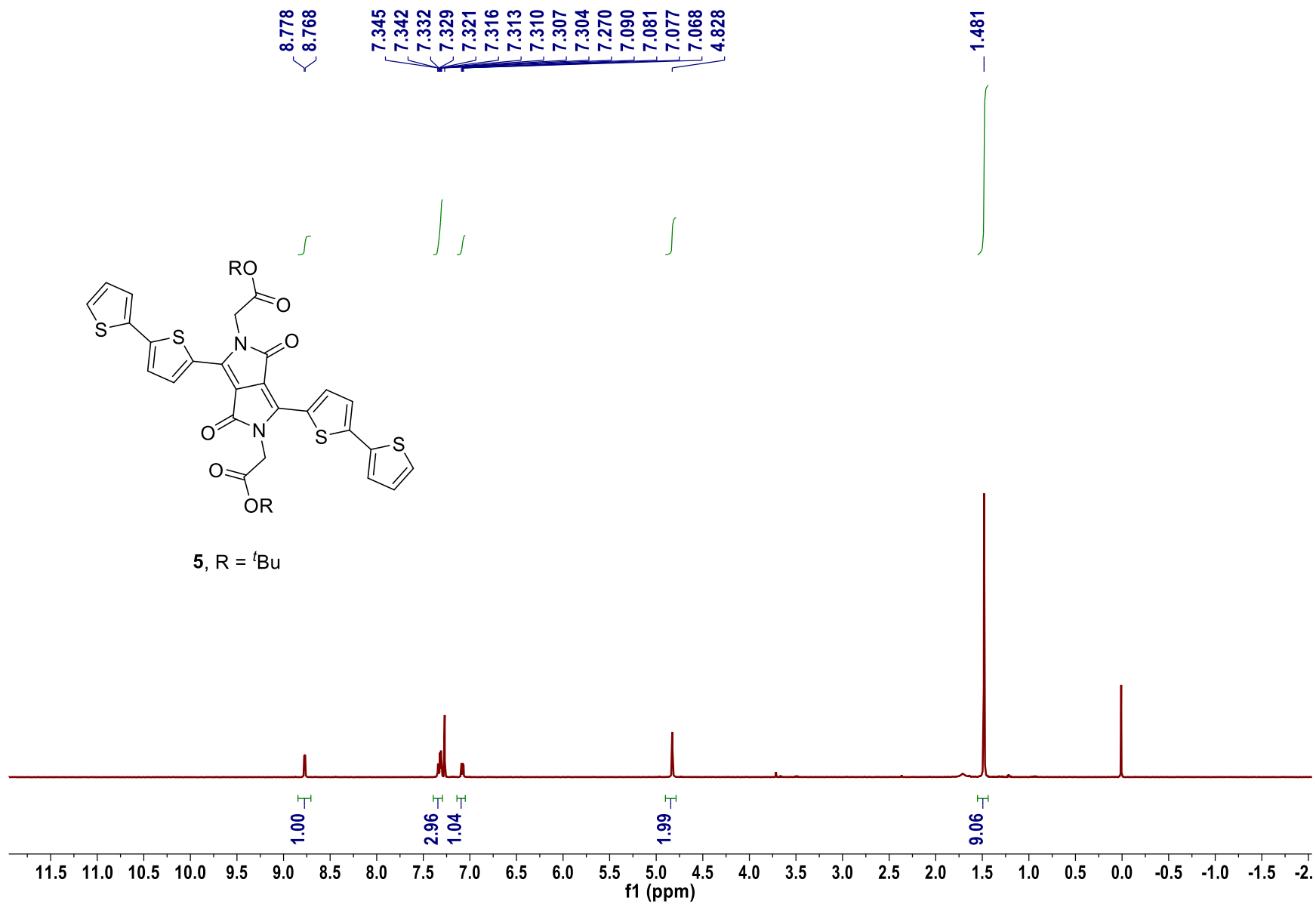
⁵School of Chemistry and Chemical Engineering, Shaanxi Normal University, Xi'an, 710062, PRC

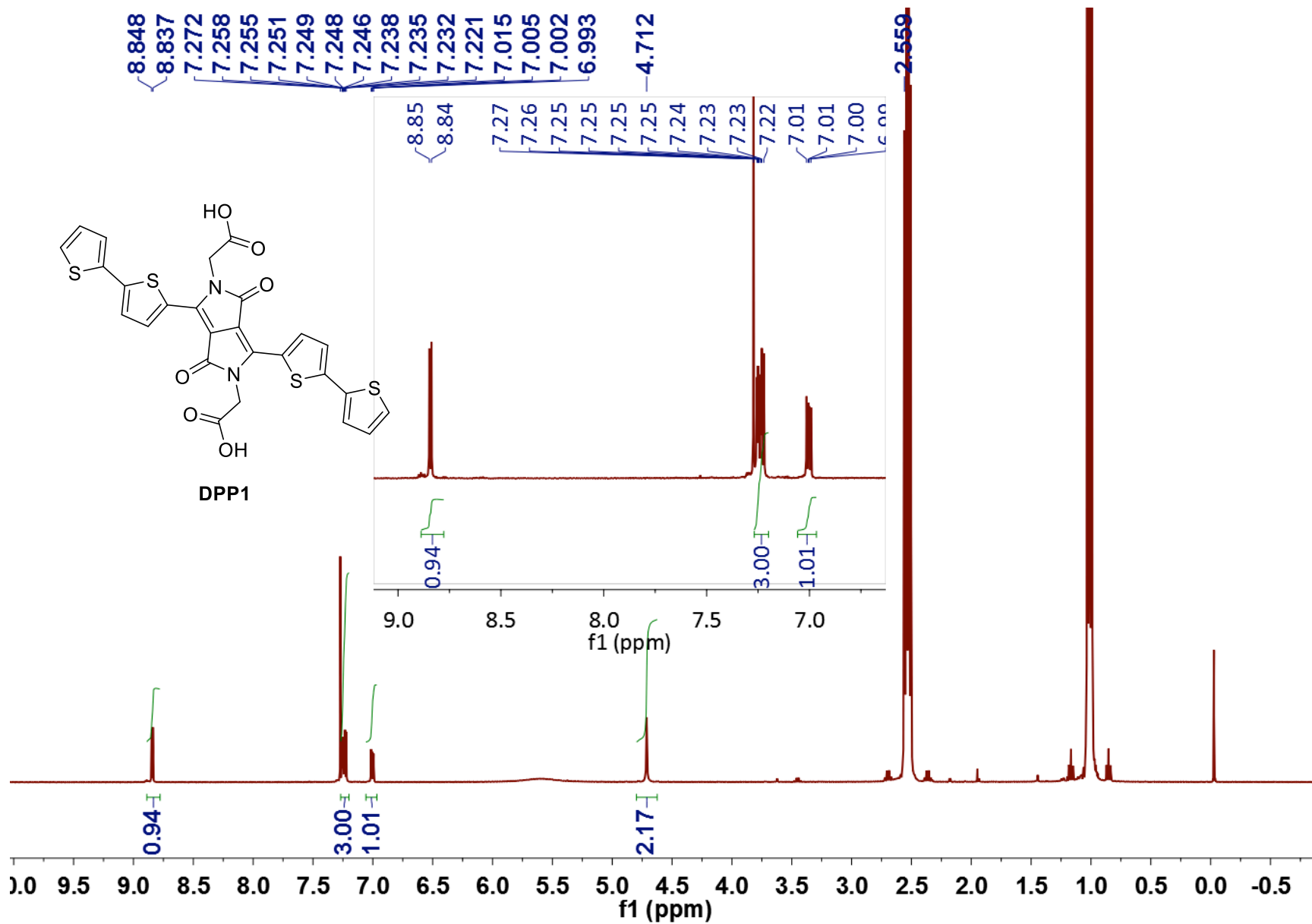
Supporting Information

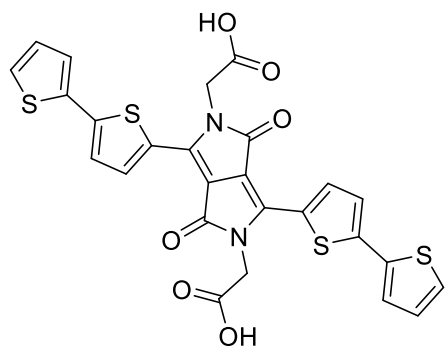
- ¹H and ¹³C NMR Spectra of **4**, **5**, **DPP1**, and **DPP2**.....2-9
- Photophysical Characterization of **DPP1** and **DPP2**.....10-11



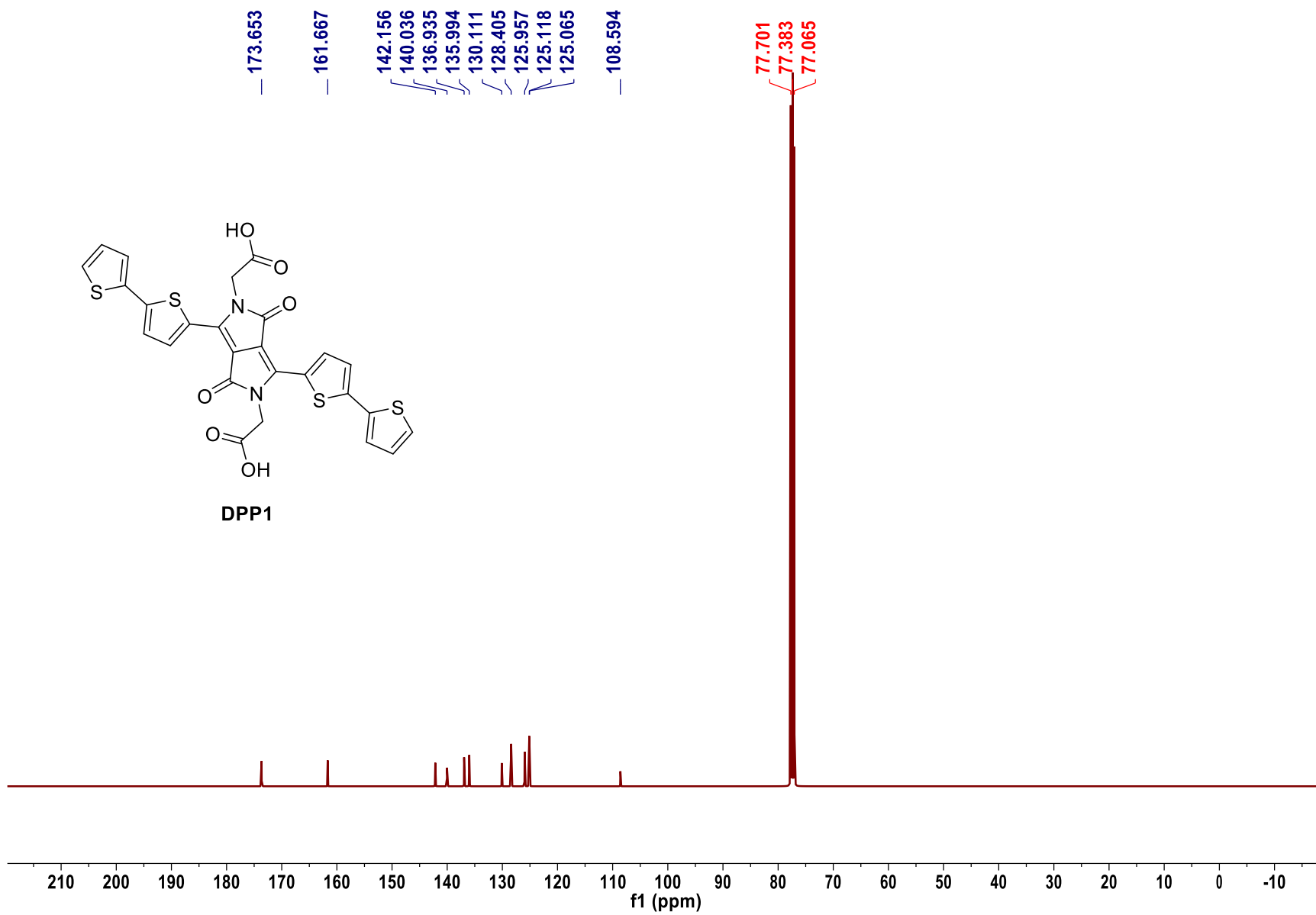


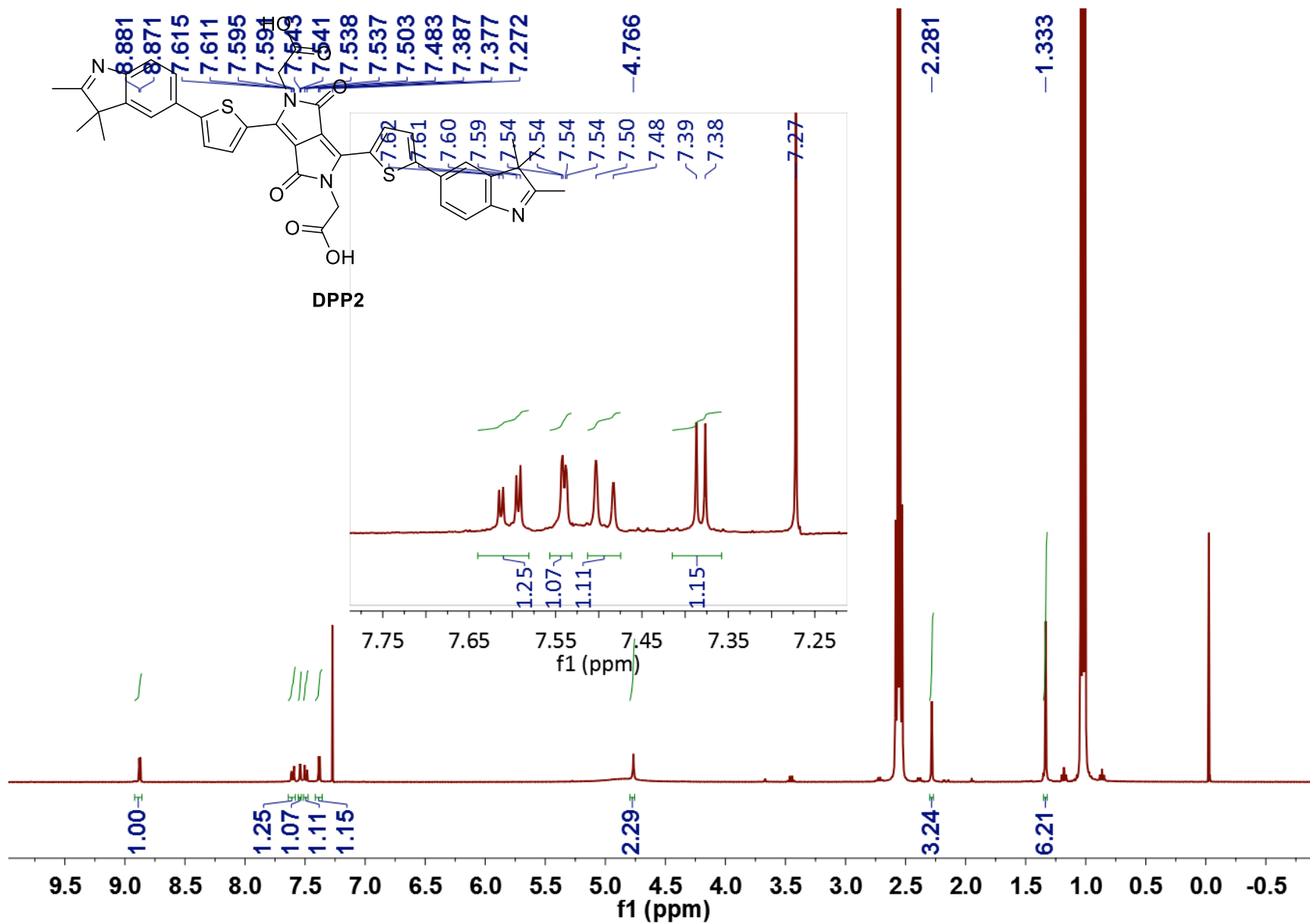


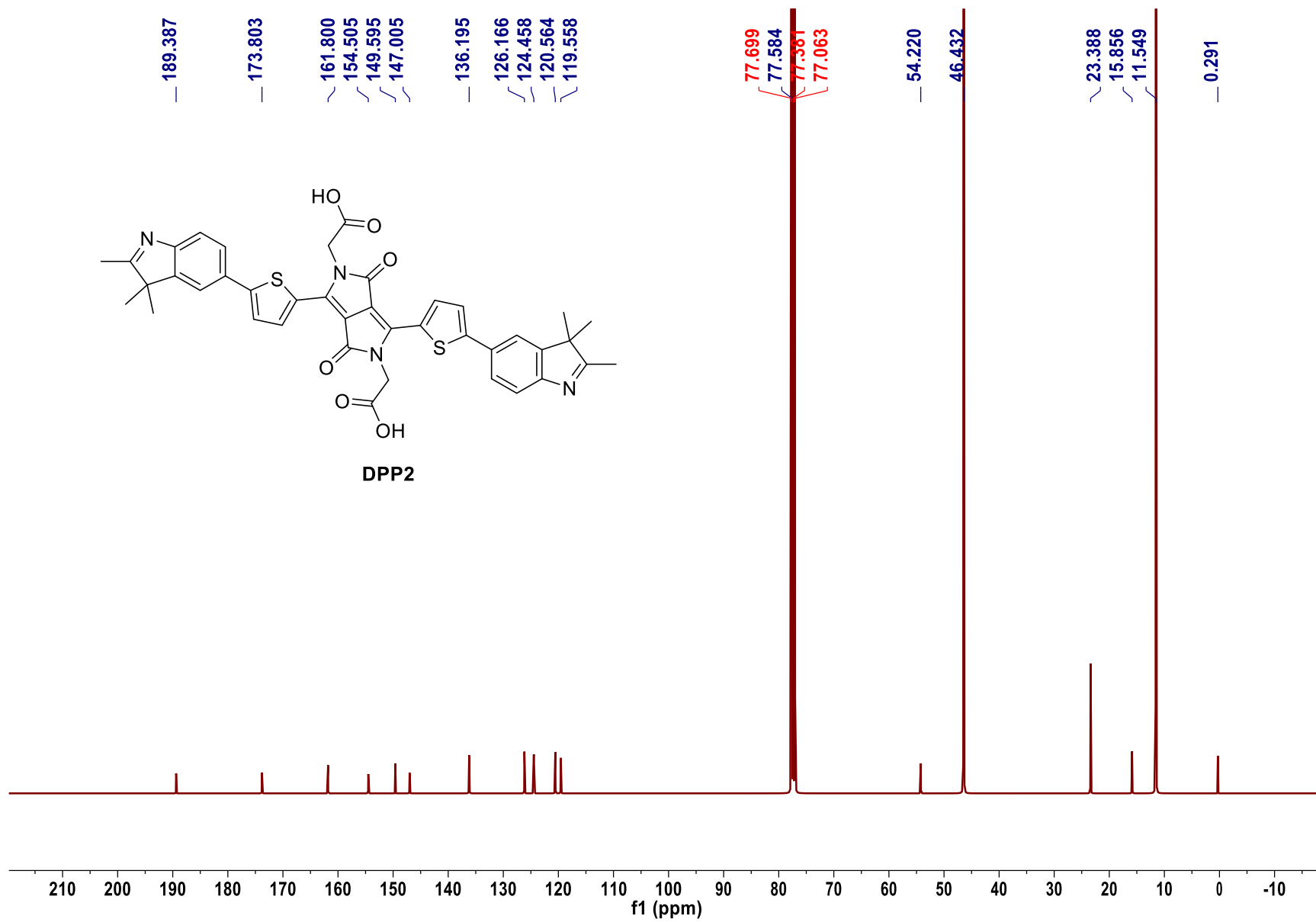




DPP1







Photophysical Characterization

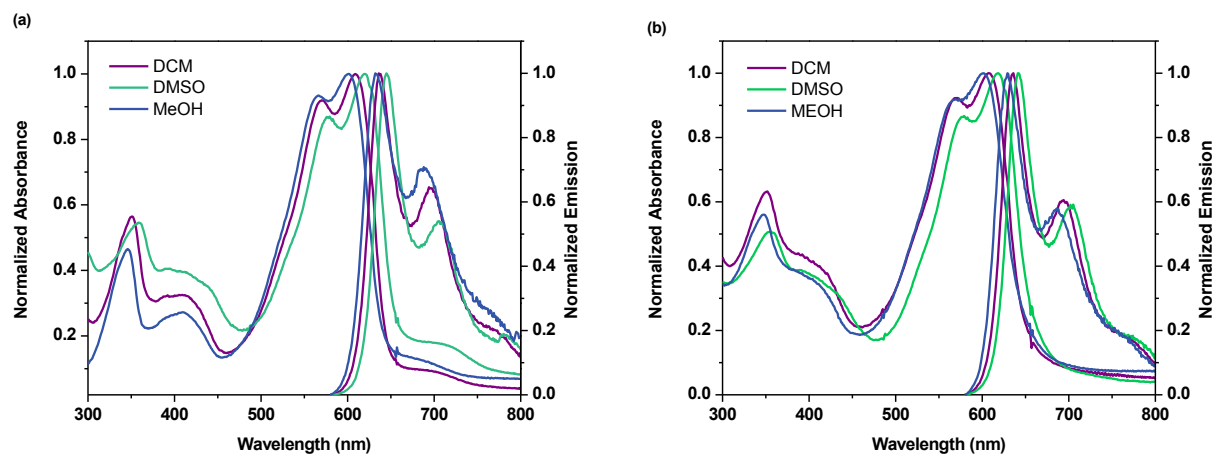


Figure 1. Normalized absorbance and fluorescence spectra of (a) **DPP1** and (b) **DPP2** in DCM, DMSO and MeOH in the presence of 1% Et₃N.

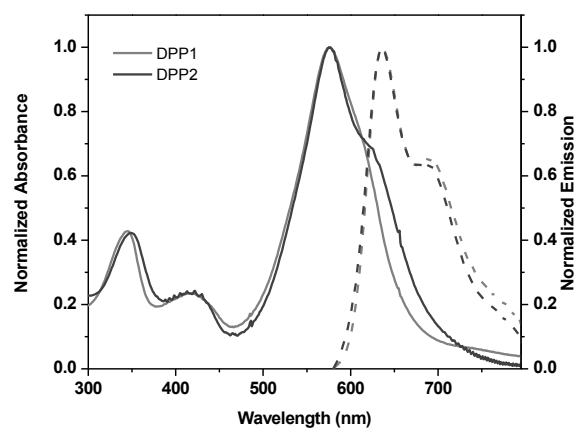


Figure 2. Normalized absorbance and fluorescence spectra of **DPP1** and **DPP2** in PBS.

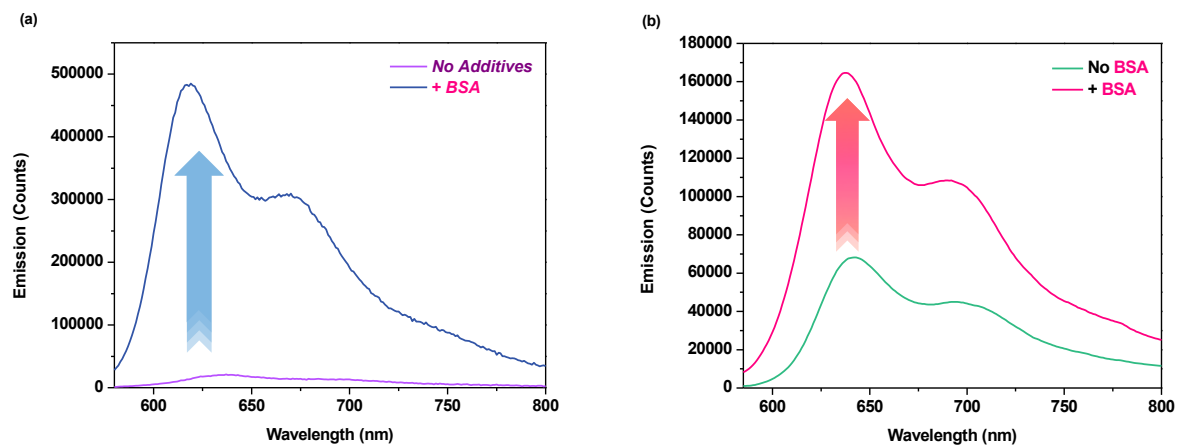


Figure 3. Effect of BSA addition on the emission spectra of (a) **DPP2** ($\Phi_{fl} = 0.01$ before addition, $\Phi_{fl} = 0.18$ after addition) and (b) **DPP1** in PBS ($\Phi_{fl} = 0.02$ before addition, $\Phi_{fl} = 0.07$ after addition).

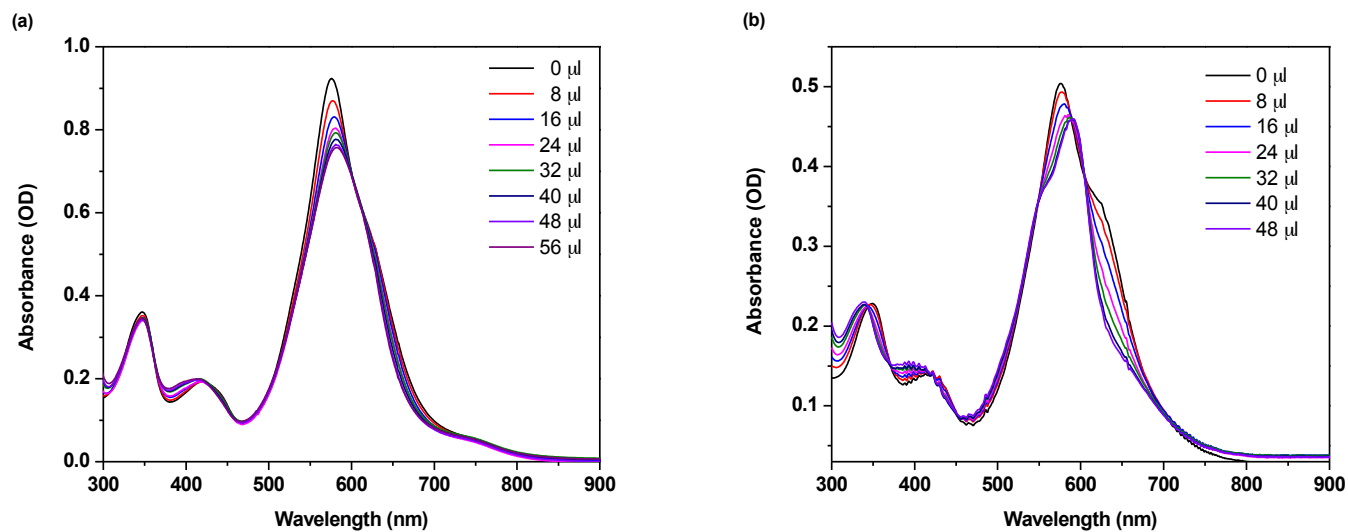


Figure 4. BSA (6×10^{-4} M) titration to a solution of (a) **DPP1** and (b) **DPP2** in PBS.