

Supporting Information for

On the Generality of Superarmament of Glycosyl Donors

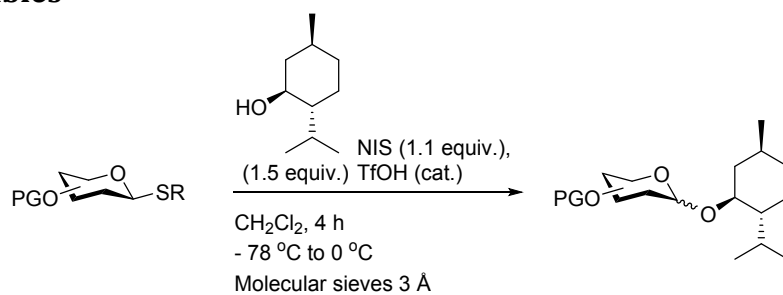
Lulu Teresa Poulsen, Mads Heuckendorff and Henrik H. Jensen*

Contribution from the Department of Chemistry, Aarhus University, Langelandsgade 140

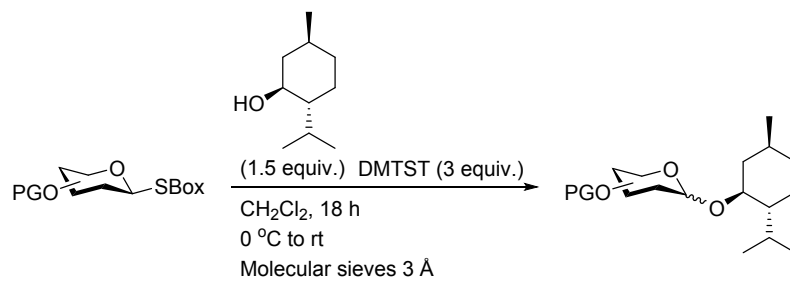
DK-8000 Aarhus C, Denmark

E-mail: hhj@chem.au.dk

Glycosylation Tables

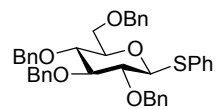


Entry	Donor	Yield	α/β ratio	Recovered SM
1	<p>1</p>	94 %	1 : 3	-
2	<p>2</p>	81 %	β only	-
3	<p>3</p>	81 %	1 : 9	-
4	<p>4</p>	84 %	β only	-
5	<p>5</p>	25 %	1 : 3	64 %
6	<p>6</p>	46 %	β only	40 %

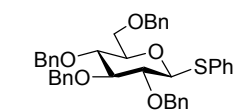
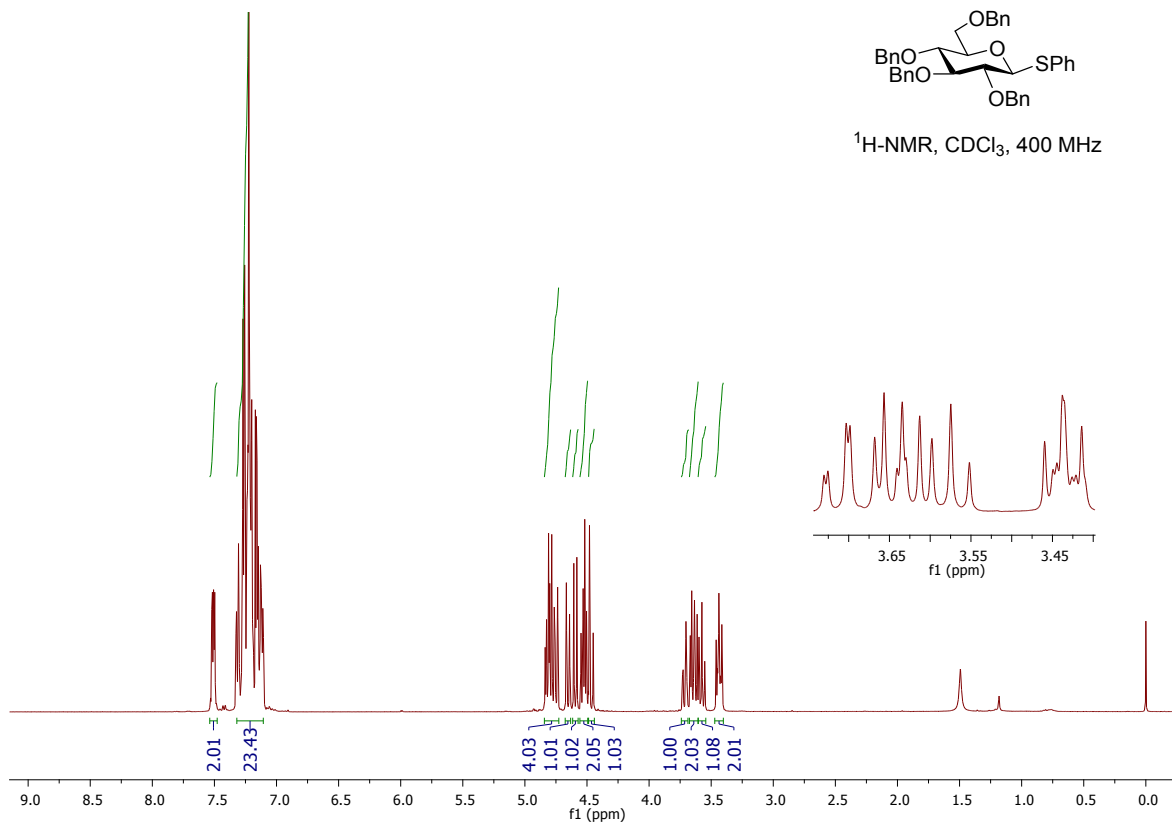


Entry	Donor	Yield	α/β ratio
1	<p>5</p>	88 %	1 : 1.1
2	<p>6</p>	89 %	β only

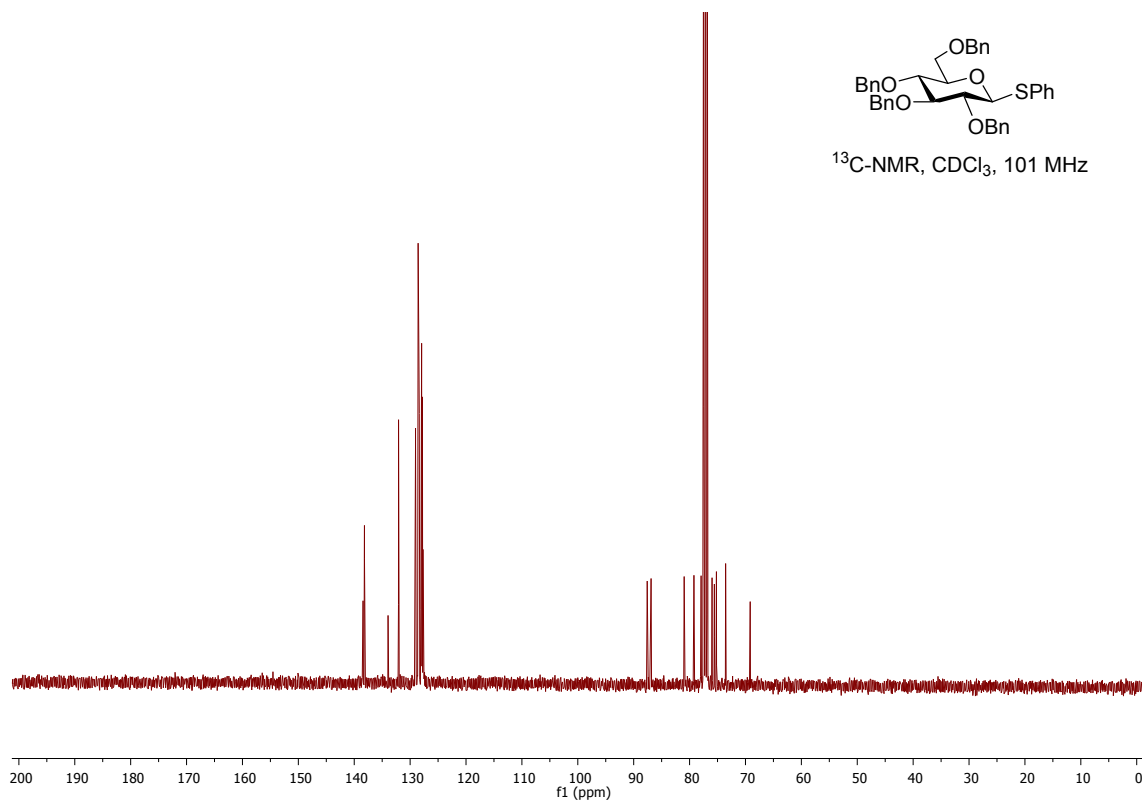
¹H and ¹³C NMR Spectra for Compounds.

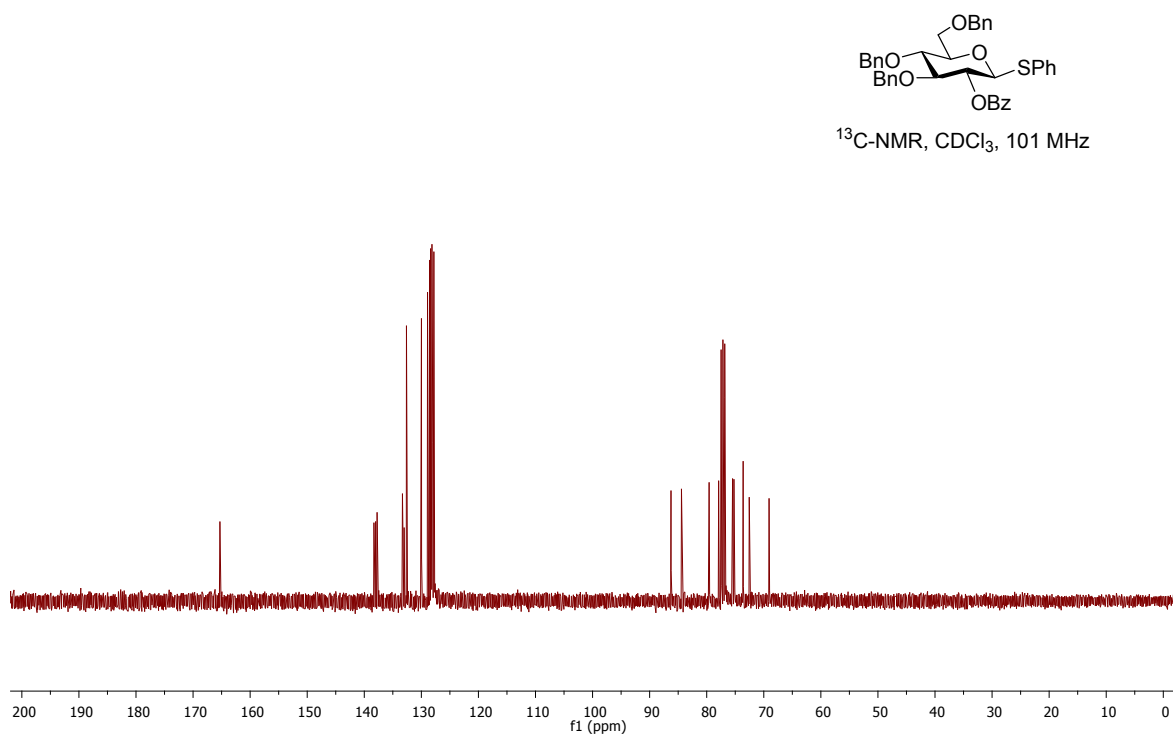
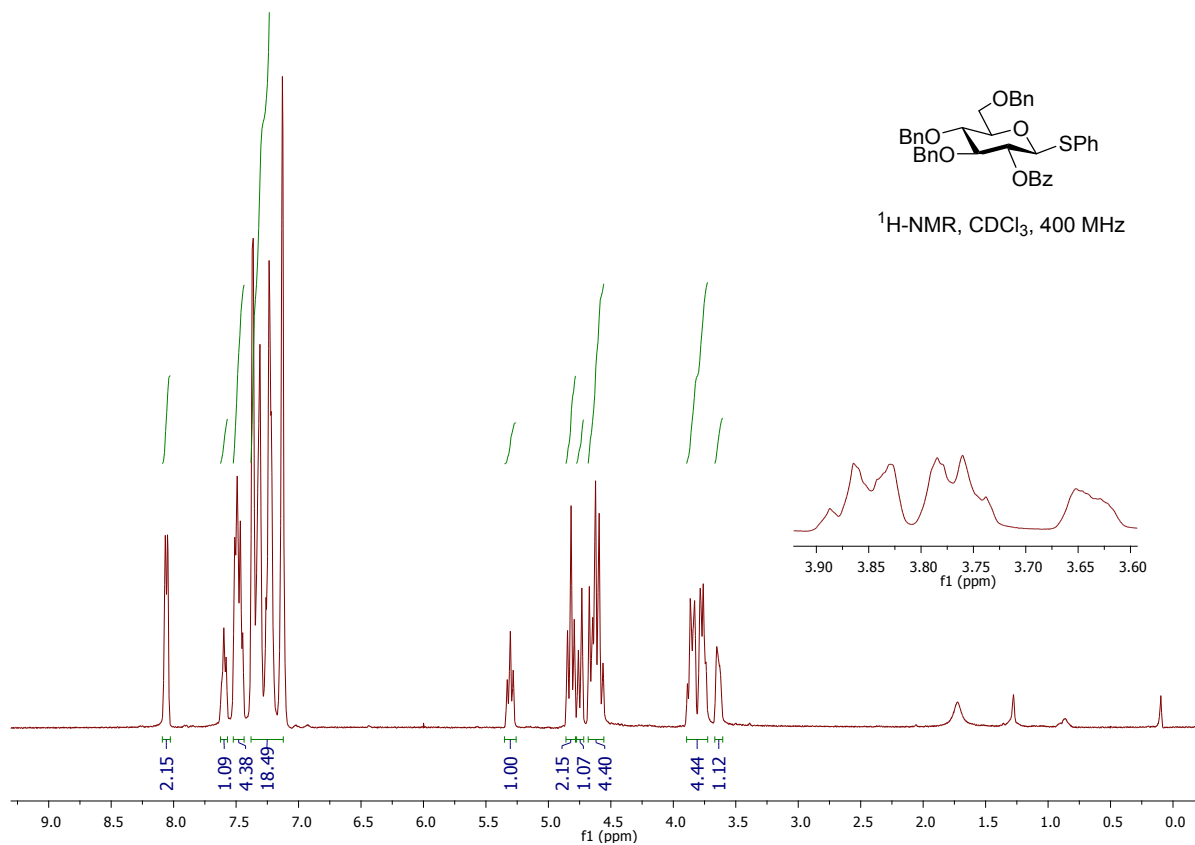


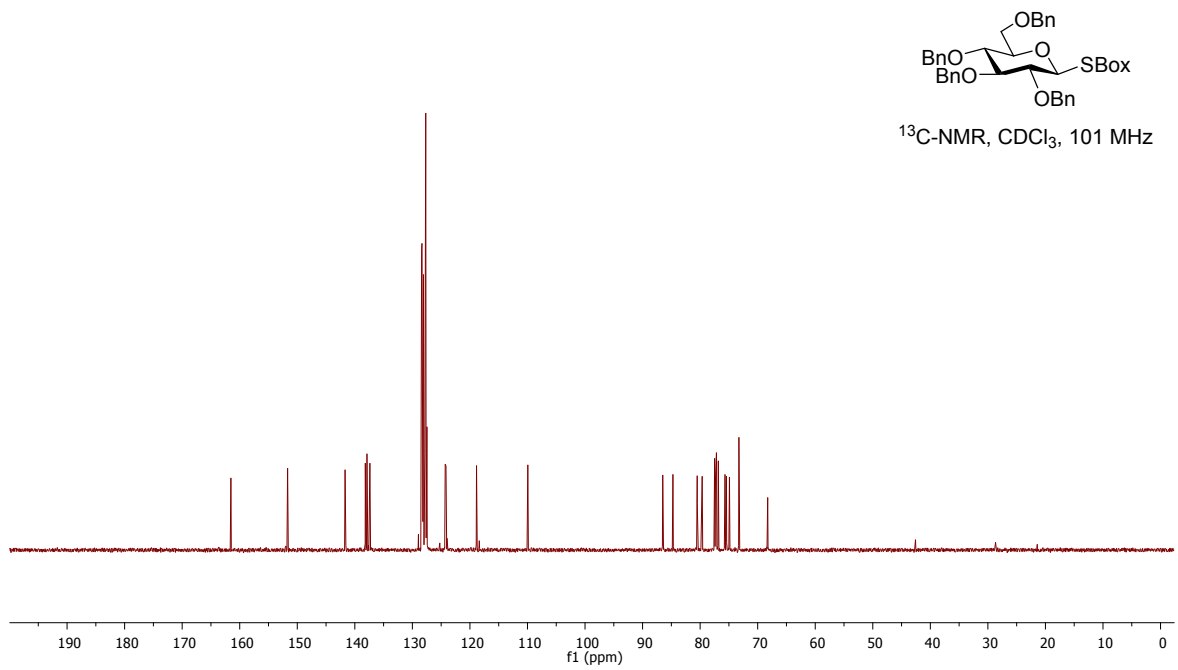
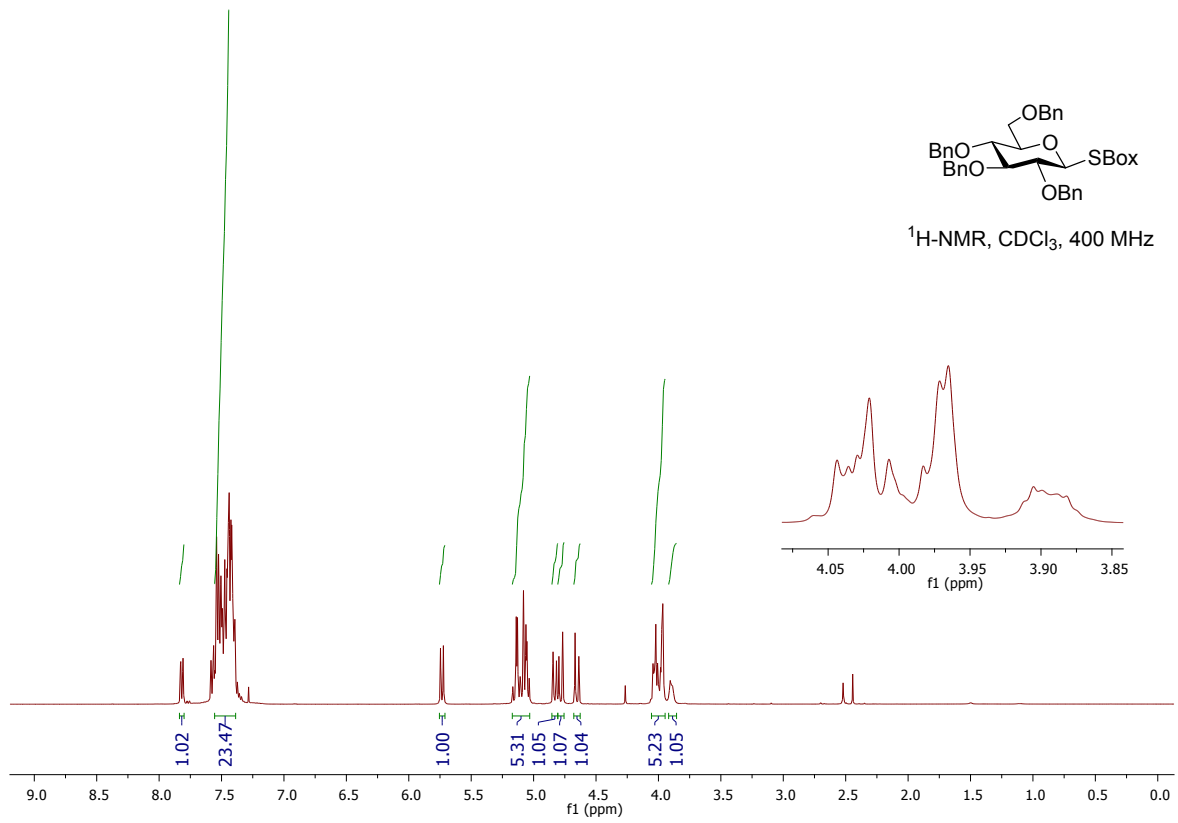
¹H-NMR, CDCl₃, 400 MHz

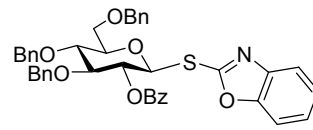


¹³C-NMR, CDCl₃, 101 MHz

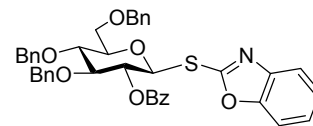
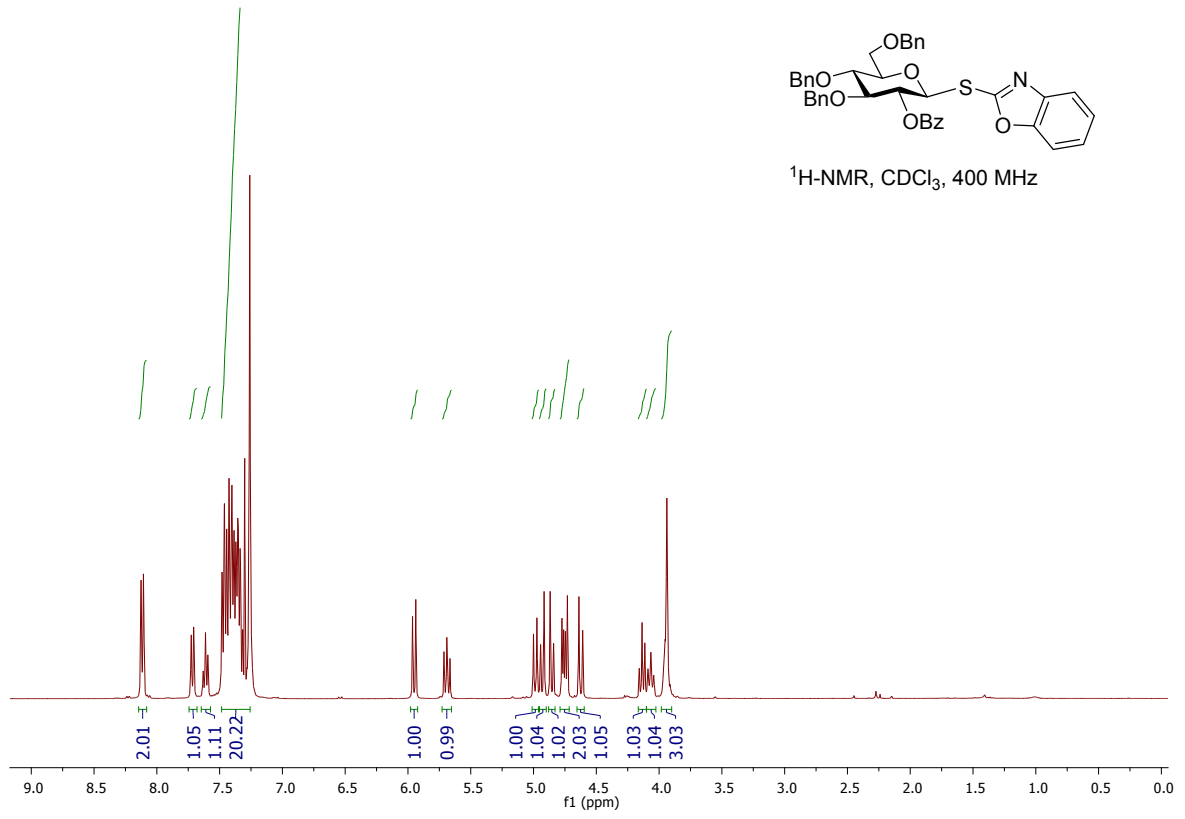




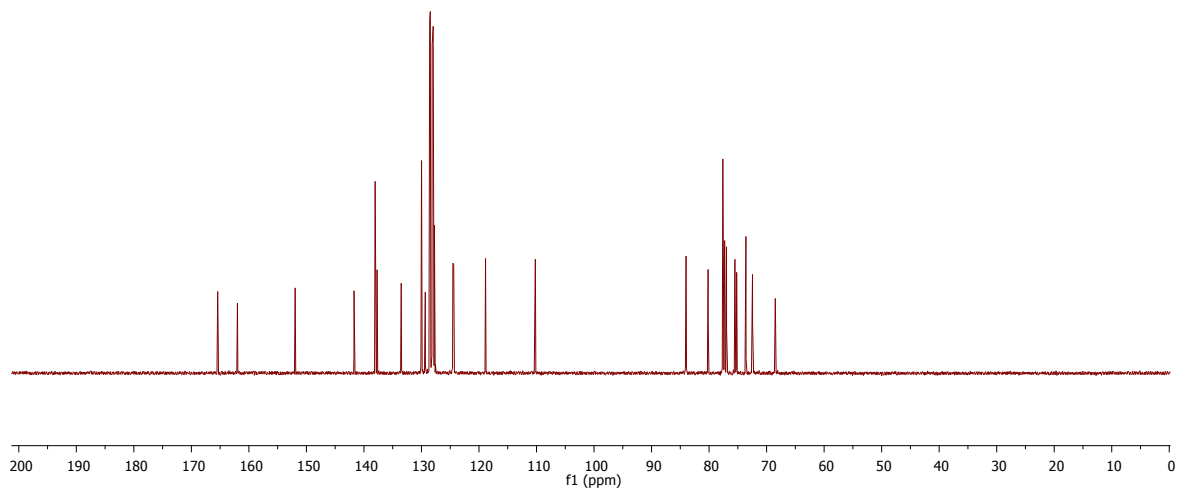


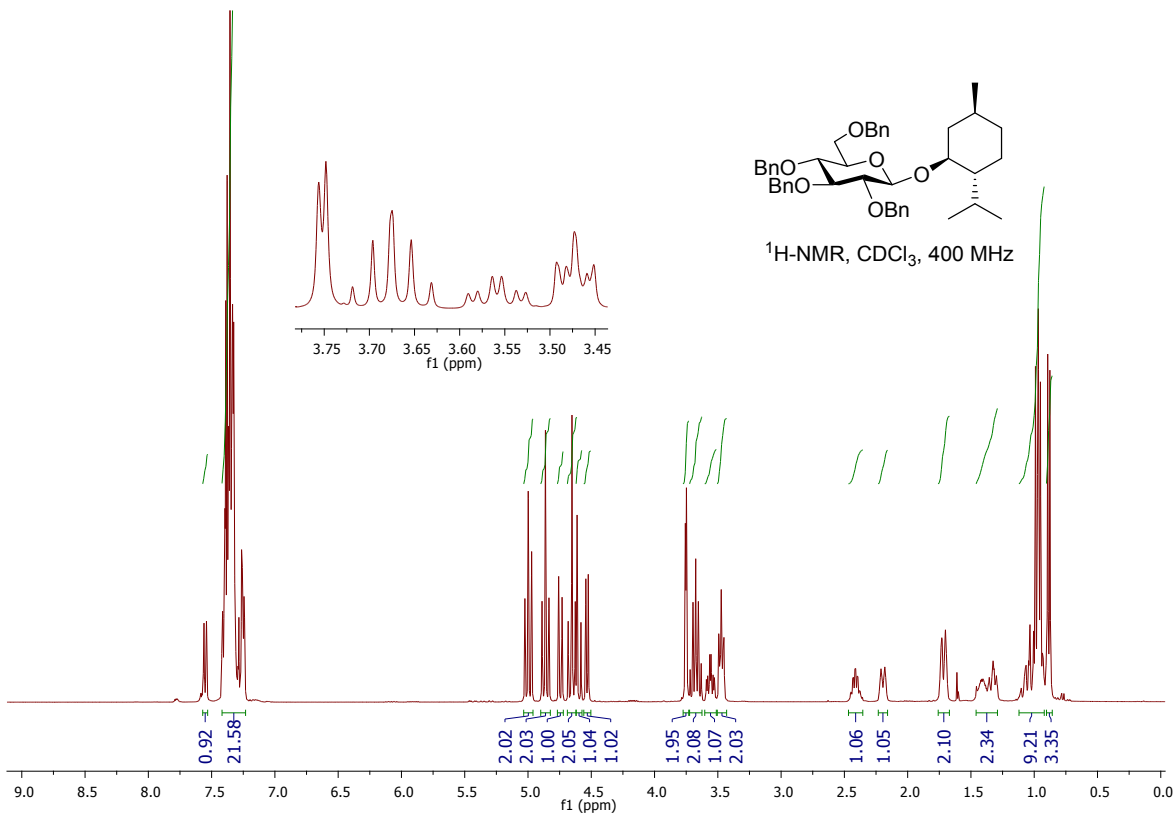
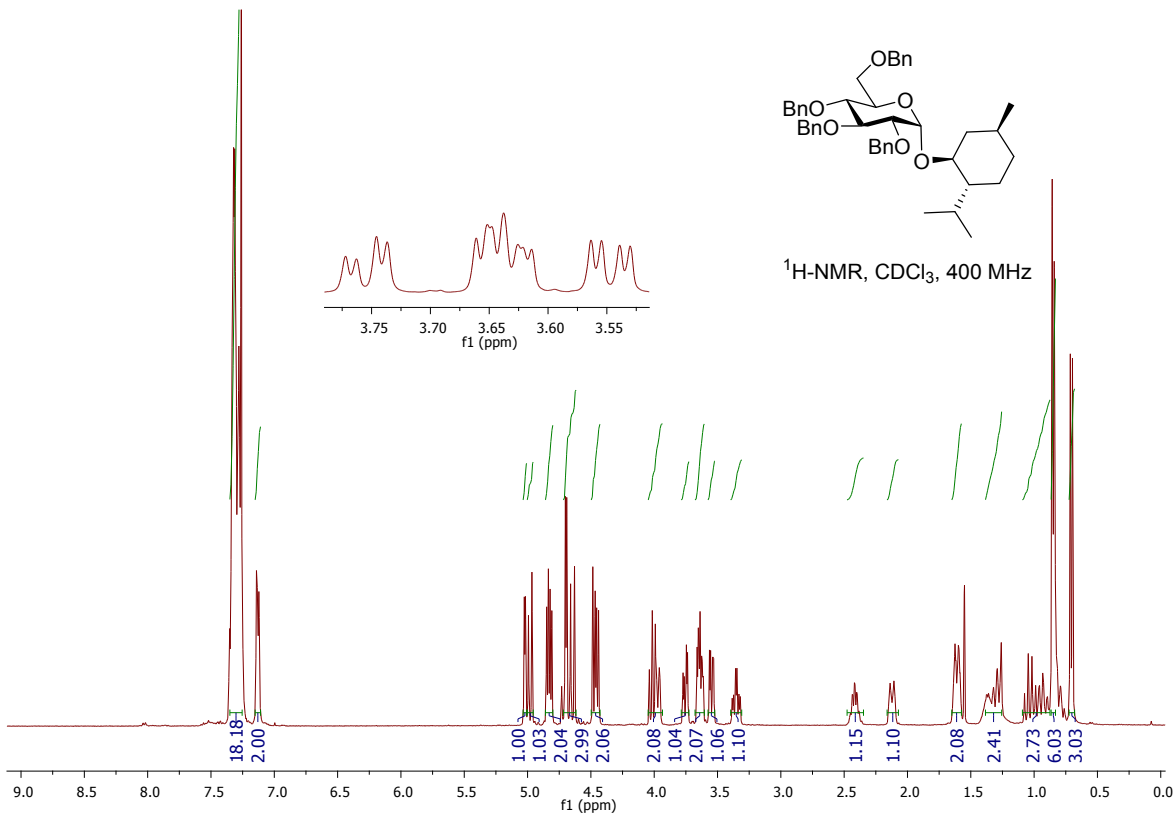


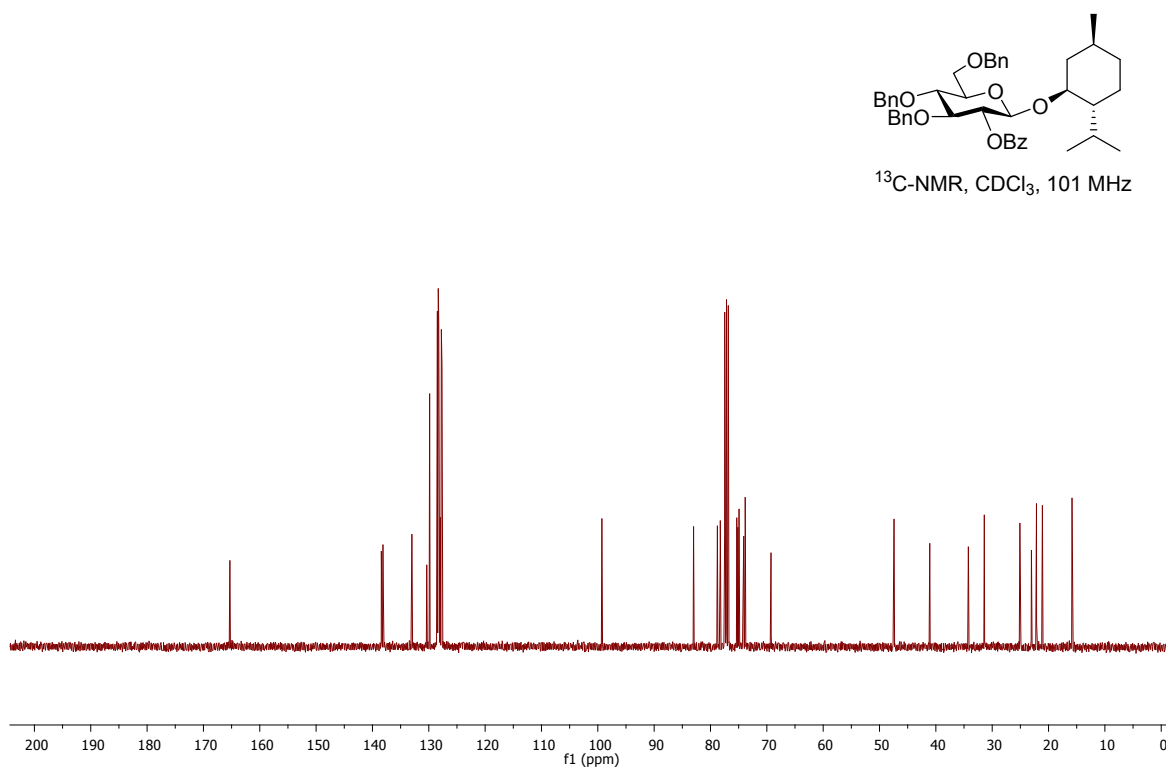
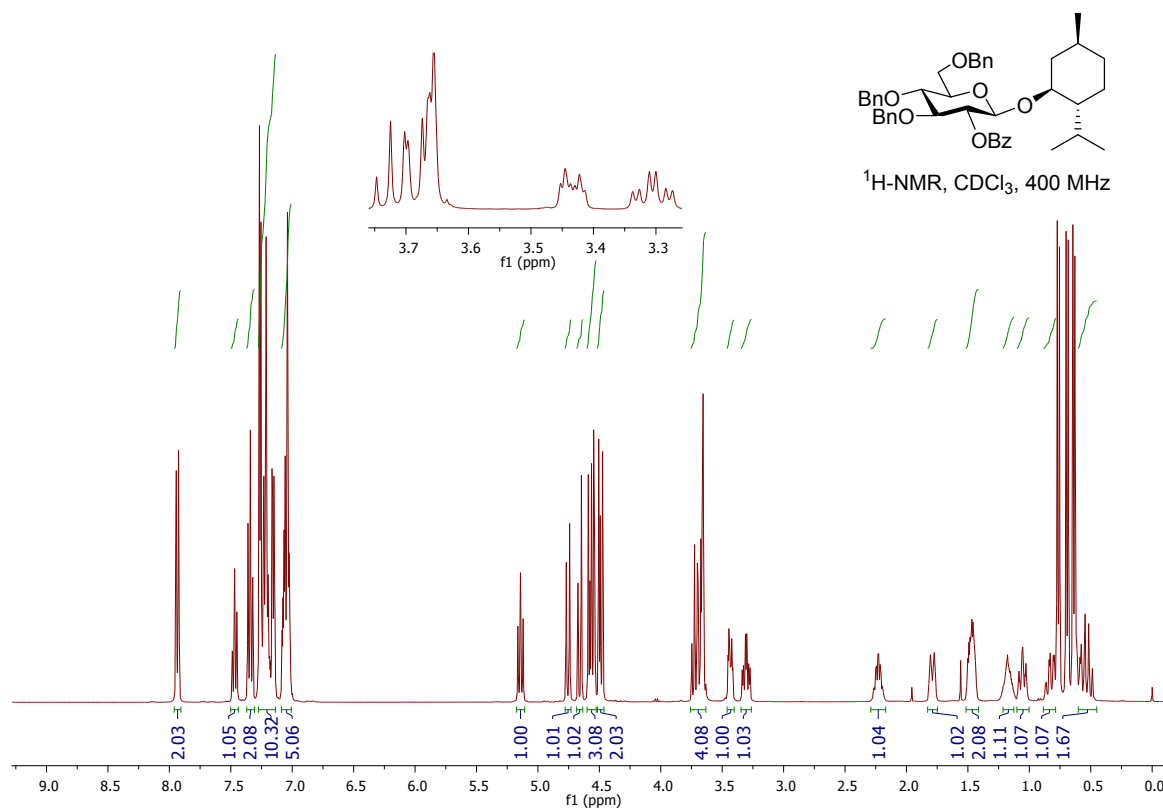
¹H-NMR, CDCl₃, 400 MHz



¹³C-NMR, CDCl₃, 101 MHz







Bibliography

- (1) Ferrier, R. J.; Hay, R. W.; Vethaviasar, N. *Carbohydr. Res.* **1973**, *27*, 55–61.
- (2) Buda, S.; Gołębiowska, P.; Mlynarski, J. *Eur. J. Org. Chem.* **2013**, 3988–3991.
- (3) Andersen, S. M.; Heuckendorff, M.; Jensen, H. H. *Org. Lett.* **2015**, *17*, 944–947.
- (3) Nicolaou, K. C.; Mitchell, H. J.; Jain, N. F.; Bando, T.; Hughes, R.; Winssinger, N.; Natarajan, S.; Koumbis, A. E. *Chem. - A Eur. J.* **1999**, *5*, 2648–2667.
- (4) Kamat, M. N.; Demchenko, A. V. *Org. Lett.* **2005**, *7*, 3215–3218.
- (5) Mydock, L. K.; Demchenko, A. V. *Org. Lett.* **2008**, *10*, 2103–2106.
- (6) Imagawa, H.; Kinoshita, A.; Fukuyama, T.; Yamamoto, H.; Nishizawa, M. *Tetrahedron Lett.* **2006**, *47*, 4729–4731.
- (7) Koide, K.; Ohno, M.; Kobayashi, S. *Tetrahedron Lett.* **1991**, *32*, 7065–7068.
- (8) Pragani, R.; Seeberger, P. H. *J. Am. Chem. Soc.* **2011**, *133*, 102–107.