

Electronic Supplementary Information (ESI)

A selective emissive chromogenic and fluorogenic seleno-coumarin probe for Cu²⁺ detection in aprotic media.

A. Cesar Gonçalves^{a,b}, J. Luis Capelo^{b,c}, C. Lodeiro^{b,c*}, A. A. Dos Santos^{a*}

^a.Instituto de Química, Universidade de São Paulo, Av. Prof. Lineu Prestes, 748, CxP. 26077, São Paulo, 05508-000, Brazil.

^b.BIOSCOPE Group, UCIBIO-REQUIMTE, Departamento de Química, Faculdade de Ciências e Tecnologia, Caparica, Universidade Nova de Lisboa, 2829-516 Portugal.

^c.Proteomass Scientific Society, Rua dos Inventores, Madan Park, 2829-516 Caparica, Portugal.

CONTENT:

Figure S1. ¹H NMR spectrum of **7** (CDCl₃; 400 MHz).

Figure S2. ¹³C NMR spectrum of **7** (CDCl₃; 101 MHz).

Figure S3. Full expanded MALDI-TOF-MS spectrum of **7**.

Figure S4. Isotopic model and MALDI-TOF-MS analysis of **7**.

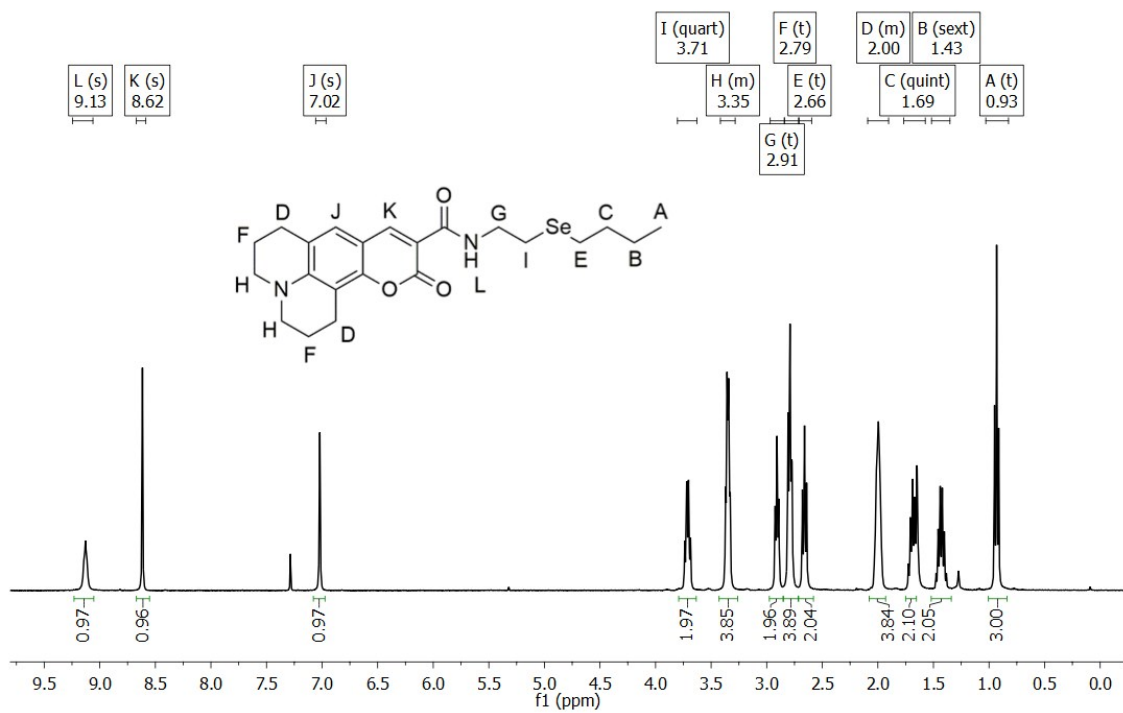


Figure S1. ^1H NMR spectrum of **7** (CDCl_3 ; 400 MHz).

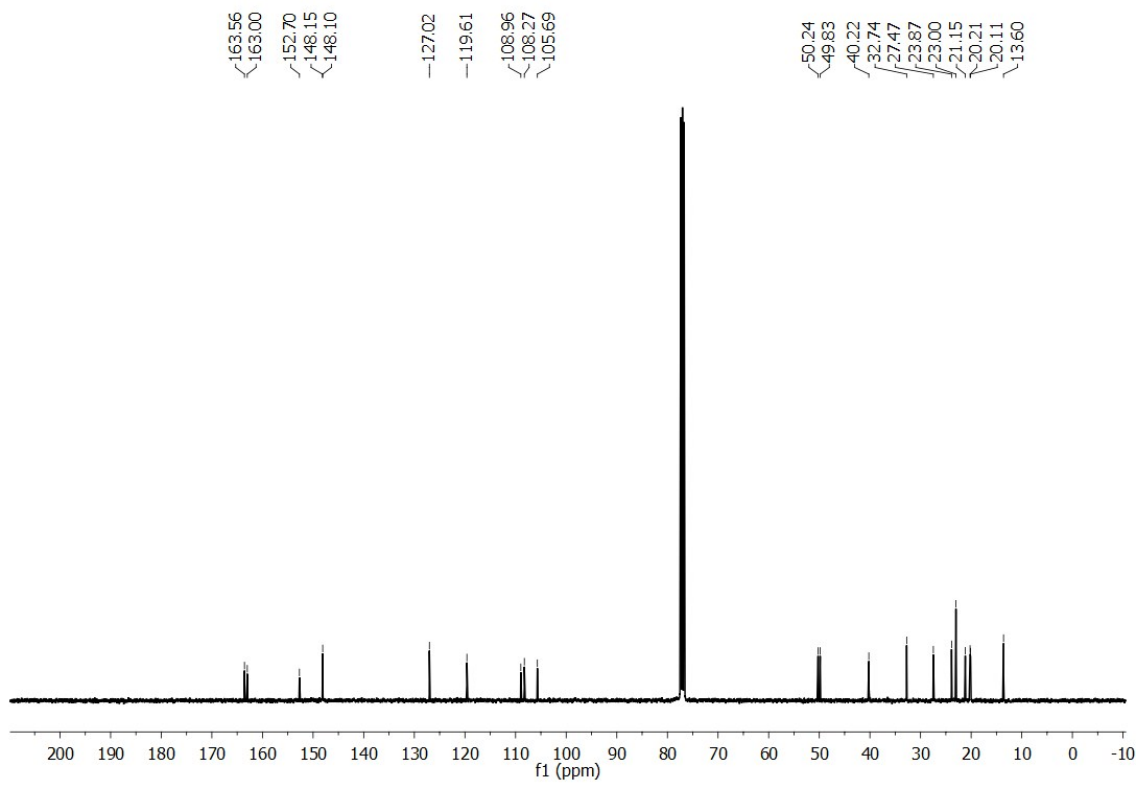


Figure S2. ¹³C NMR spectrum of **7** (CDCl₃; 101 MHz).

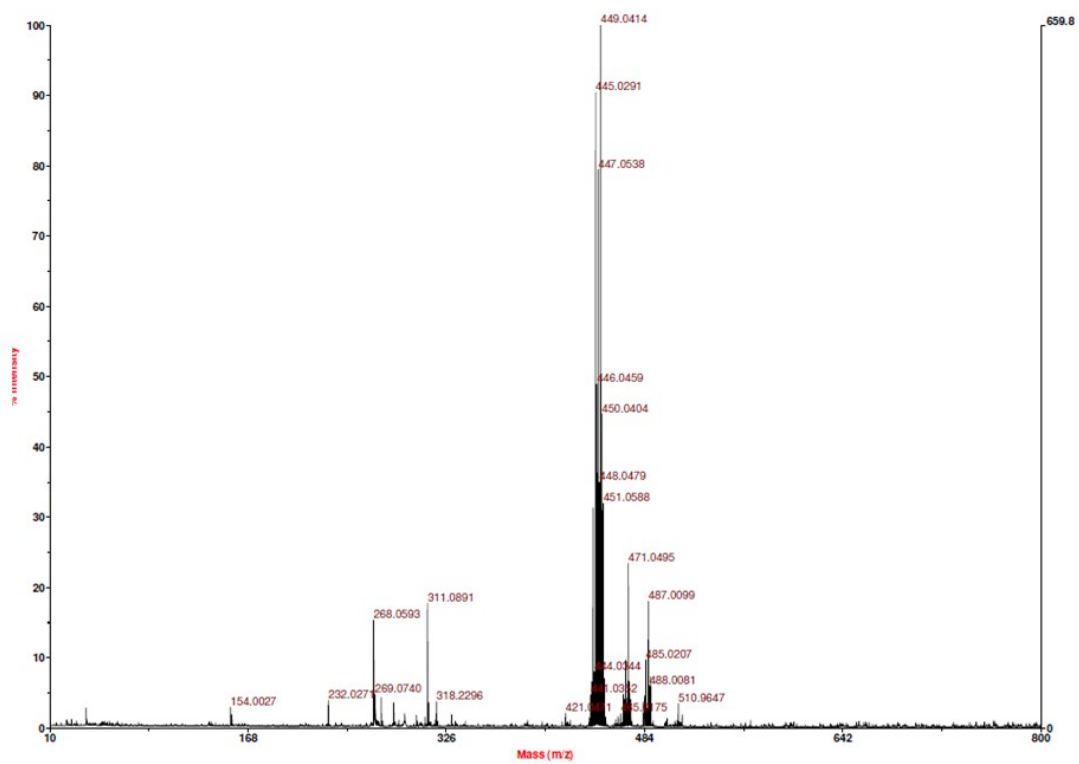


Figure S3. Full expanded MALDI-TOF-MS spectrum of **7**.

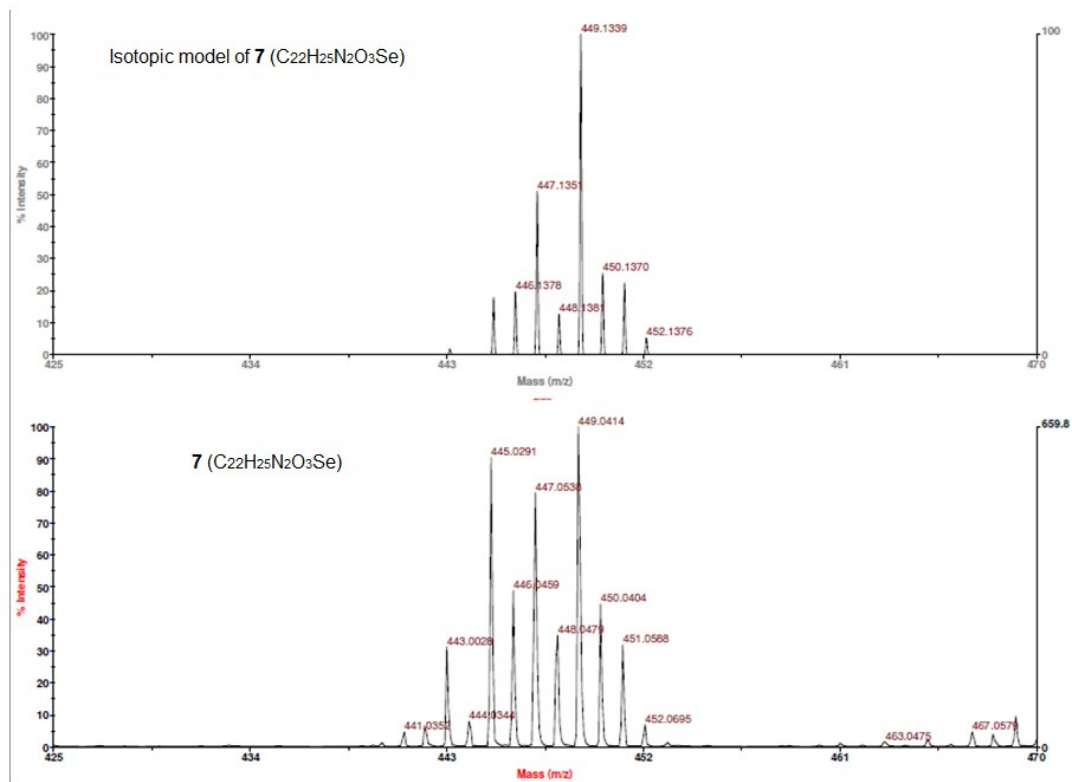


Figure S4. Isotopic model and MALDI-TOF-MS analysis of **7**.