

"SUPPLEMENTARY INFORMATION"

INDEX

Figure S1. ¹HNMR spectrum of dehydrodimer of FHC.

Figure S2. IR Spectrum of dehydrodimer of FHC.

Figure S3. LC-MS of dehydrodimer of FHC.

Figure S4. ¹HNMR spectrum of anti-dimer of THC.

Figure S5. IR Spectrum of anti-dimer of THC..

Figure S6. LC-MS of anti-dimer of THC..

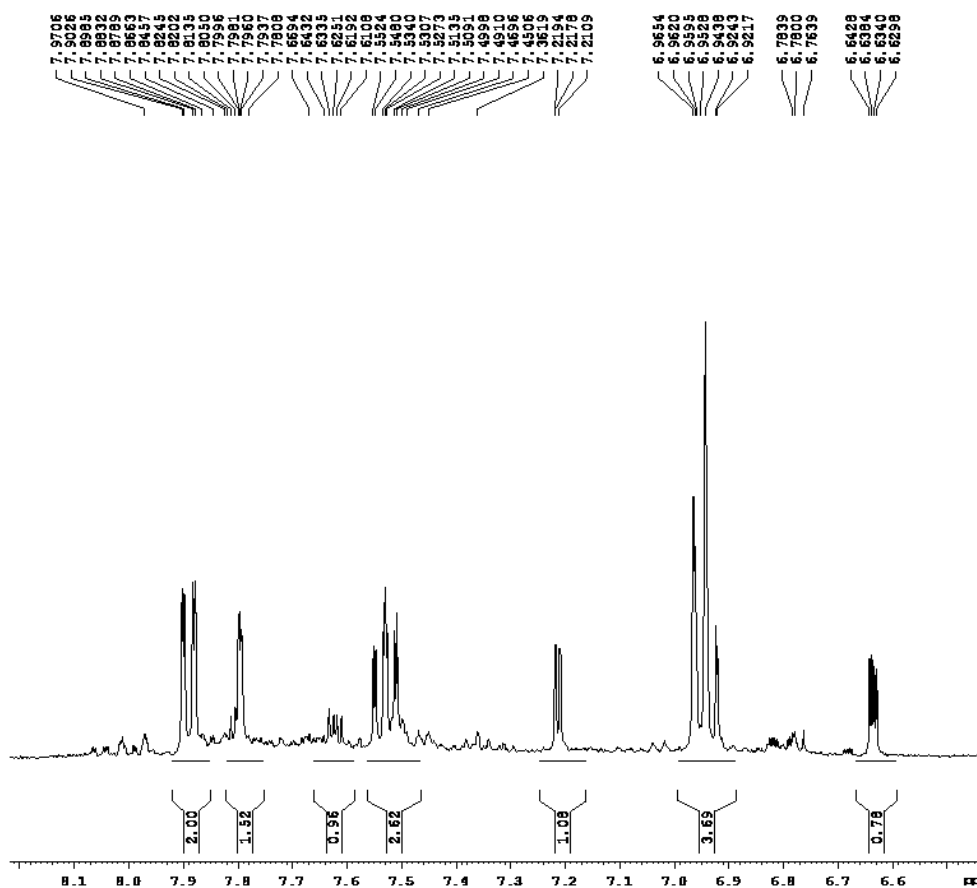
Figure S7. IR spectrum of 1,2-indandione of THC.

Figure S8. GC-MS of 1,2-indandione of FHC.

Figure S9. GC-MS of phthalide derivative of FHC.

Figure S10. GC-MS of reactant of FHC.

1a



BRUKER
AVANCE II 400 NMR
Spectrometer
SAIF
Panjab University
Chandigarh

Current Data Parameters
NAME Nov04-2015
EXPNO 31
PROCNO 1

F2 - Acquisition Parameters
Date_ 20151105
Time 5.52
INSTRUM spect
PROBHD 5 mm PABBO BB-
PULPROG zg30
TD 65536
SOLVENT Acetone
NS 8
DS 2
SWH 12019.230 Hz
FIDRES 0.183399 Hz
AQ 2.7263477 sec
RG 256
DW 41.600 usec
DE 6.00 usec
TE 296.0 K
D1 1.00000000 sec
TD0 1

==== CHANNEL f1 =====
NUC1 1H
P1 10.90 usec
PL1 -3.00 dB
SFO1 400.1324710 MHz

F2 - Processing parameters
SI 32768
SF 400.1300000 MHz
WDW EM
SSB 0
LB 0.30 Hz
GB 0
PC 1.00

manishkumaranul986@gmail.com

Figure S1. ¹H NMR spectrum of dehydromer of FHC.

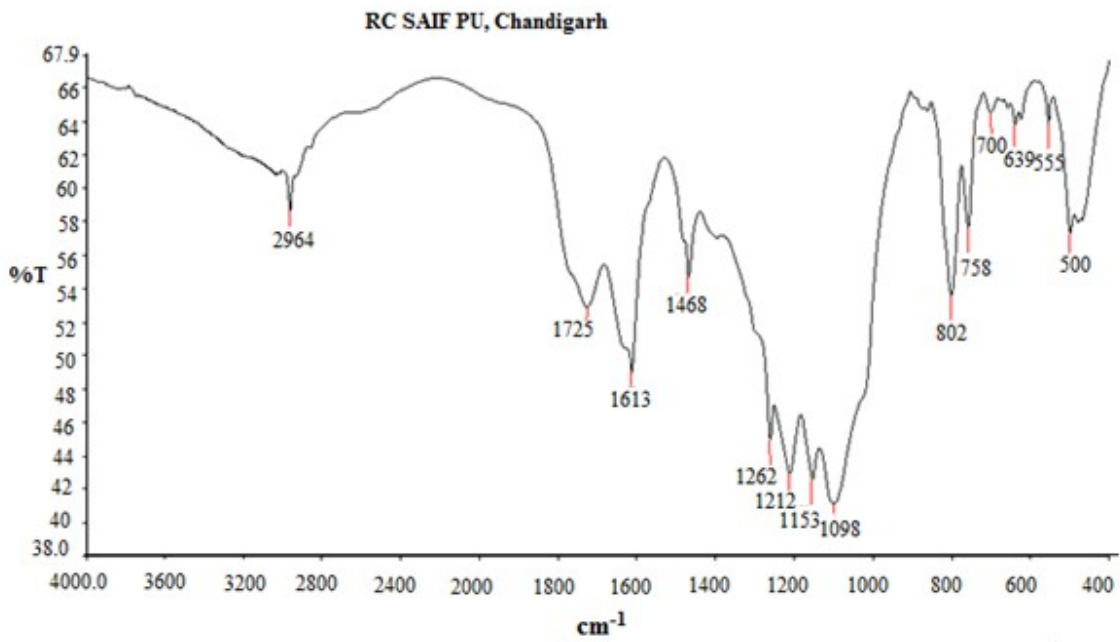


Figure S2. IR Spectrum of dehydrodimer of FHC.

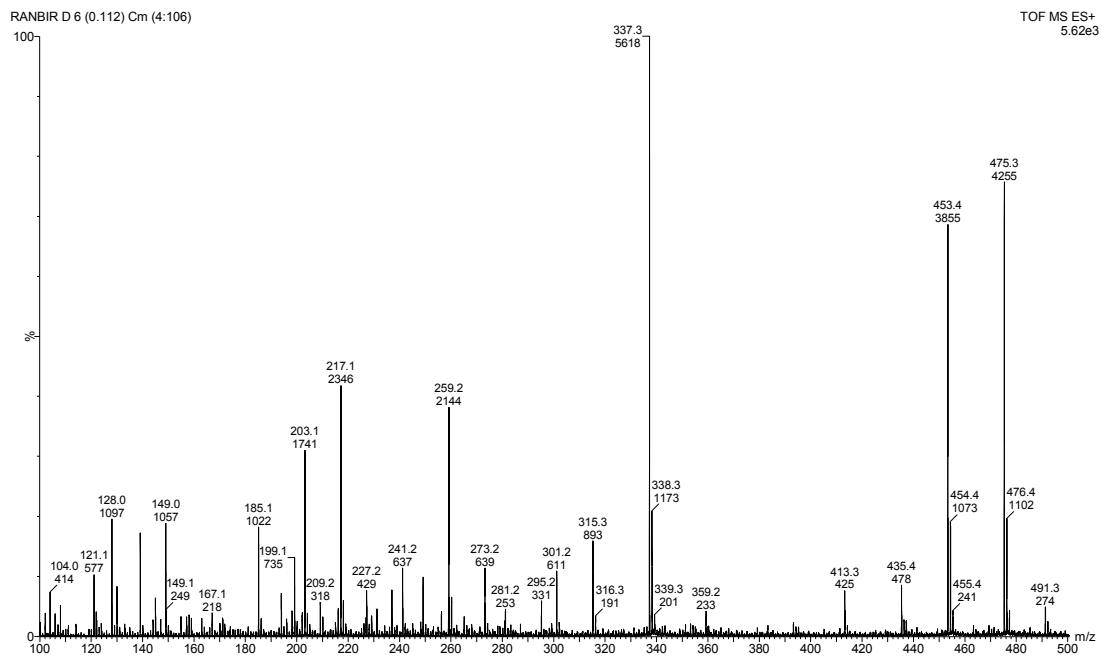


Figure S3. LC-MS of dehydrodimer of FHC.

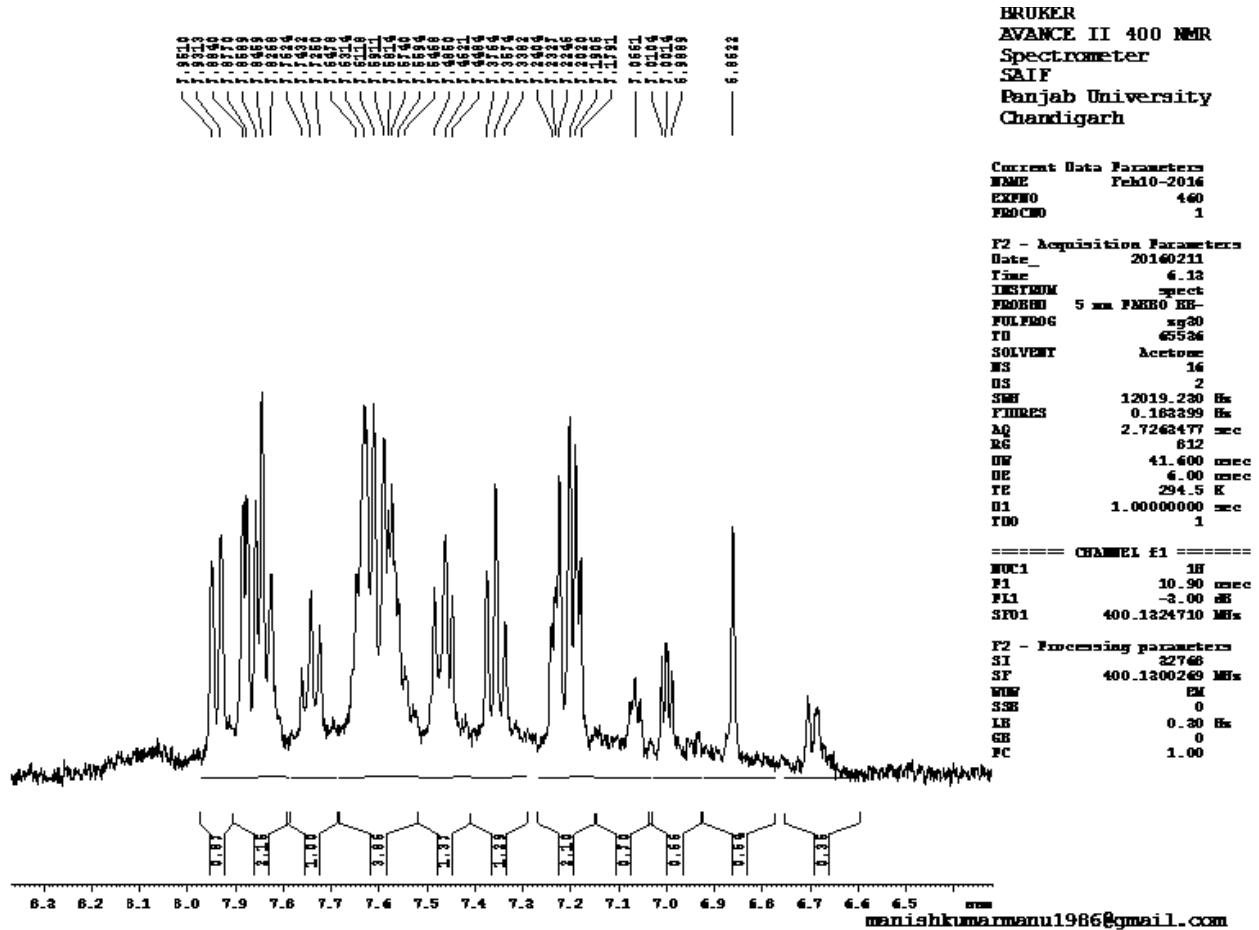


Figure S4. ¹HNMR spectrum of anti-dimer of THC.

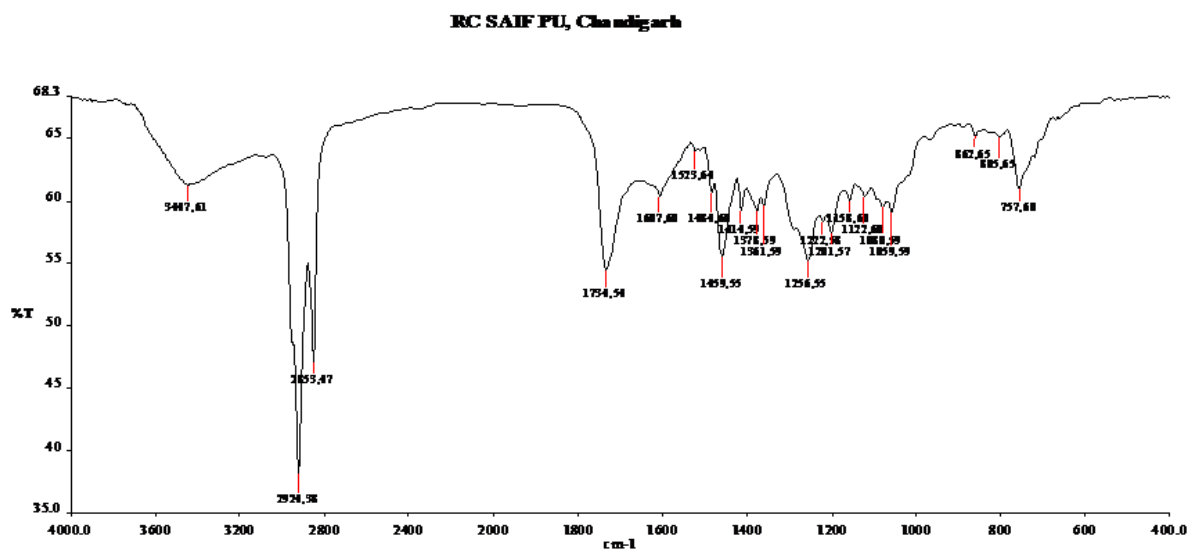


Figure S5. IR Spectrum of anti-dimer of THC.

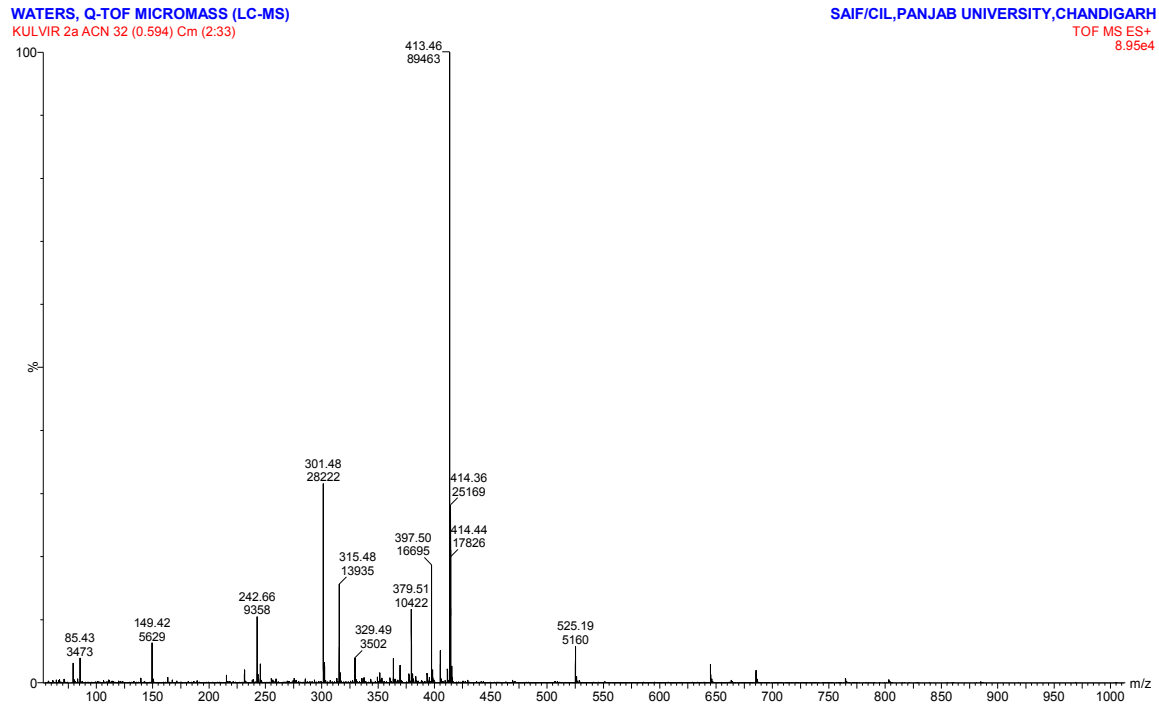


Figure S6. LC-MS of anti-dimer of THC.

RC SAIF PU, Chandigarh

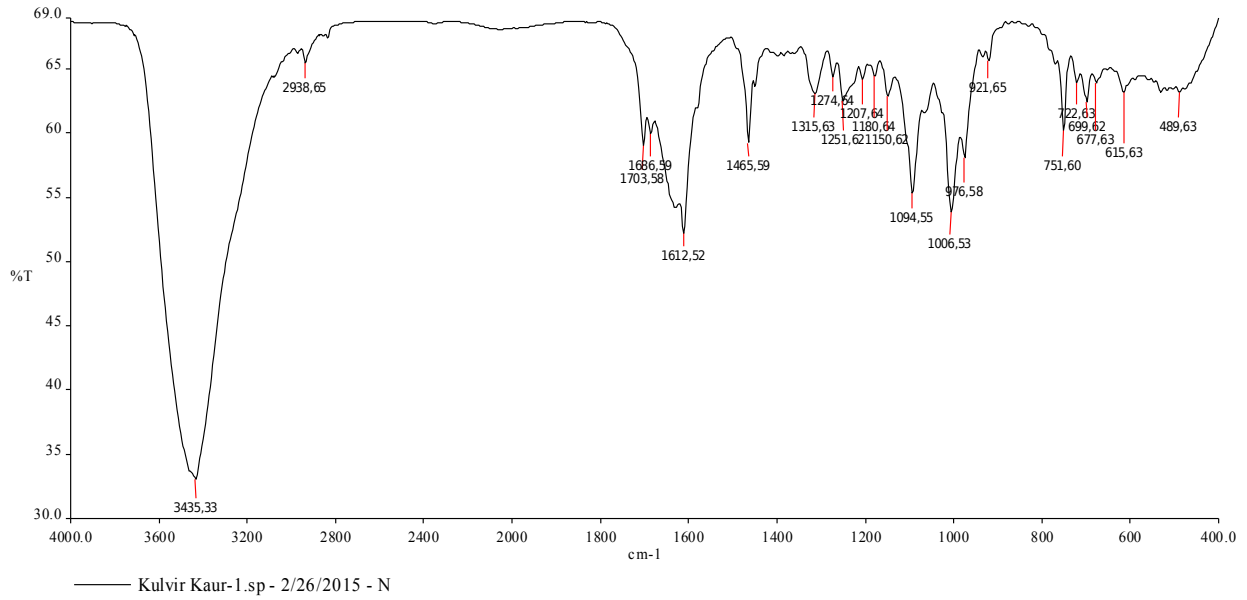


Figure S7. IR spectrum of 1,2-indandione of THC.

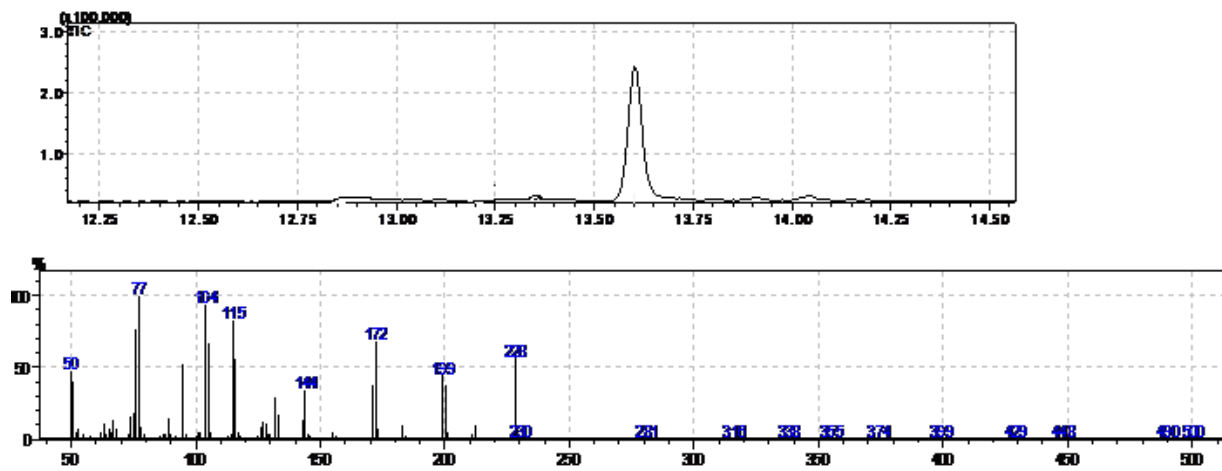


Figure S8. GC-MS of 1,2-indandione of FHC.

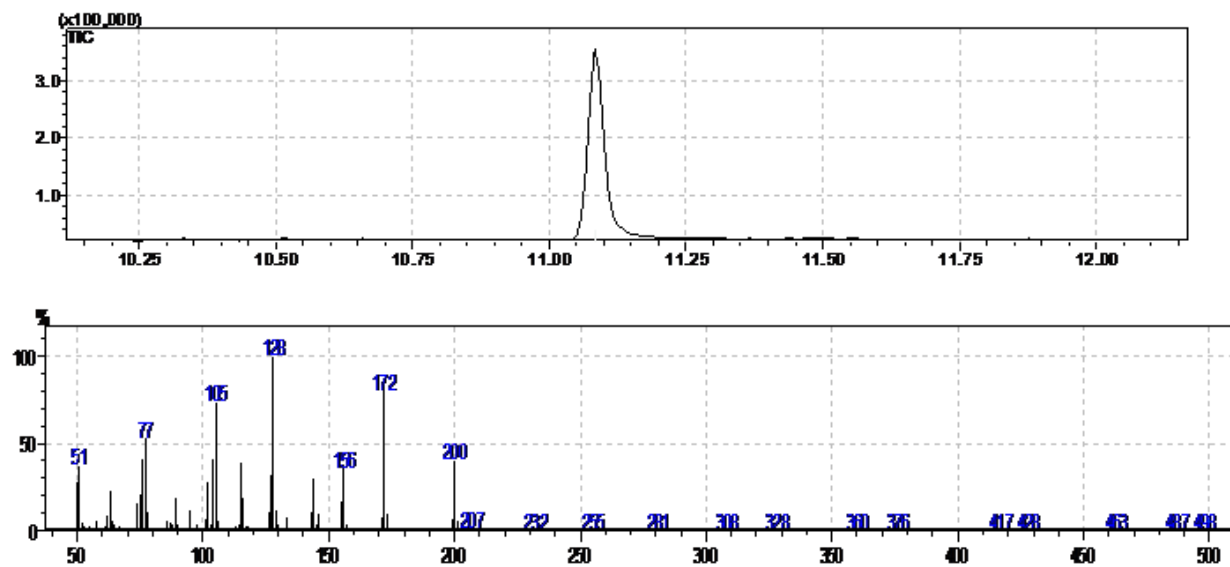


Figure S9. GC-MS of phthalide derivative of FHC.

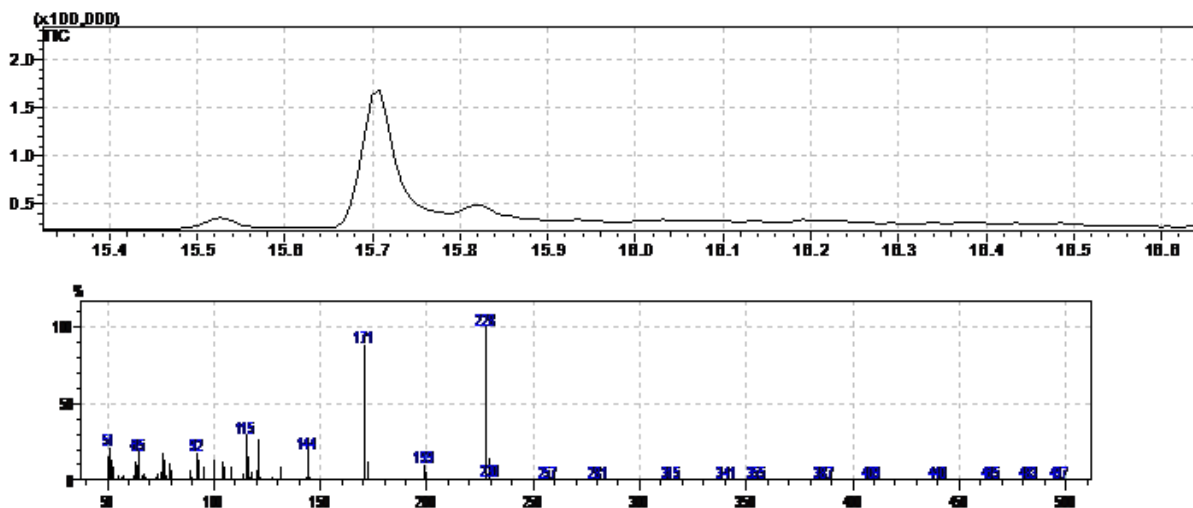


Figure S10. GC-MS of reactant of FHC.

