

Electronic Supporting Information

Phenylboronic acid-incorporated elastin-like polypeptide nanoparticle drug delivery system

Weizhi Chen,^a Shilu Ji,^a Xiaoping Qian,^a Yajun Zhang,^a Cheng Li,^a Wei Wu,^a Fei
Wang,^{*,b} Xiqun Jiang^{*,a}

^aDepartment of Polymer Science & Engineering, College of Chemistry & Chemical
Engineering, and Jiangsu Key Laboratory for Nanotechnology, Nanjing University Nanjing
University, Nanjing, 210093, P.R. China.

^bCollege of Chemical Engineering, Nanjing Forestry University, Jiangsu Key Lab of Biomass-
Based Green Fuels and Chemicals, Nanjing, 210037, P.R. China.

* Email: jiangx@nju.edu.cn, hgwf@njfu.edu.cn

```

ATG AGC AAA GGG CCG GGC (GTG GGC GTA CCG GGT AAA GGT GTT CCT
(M) S K G P G V G V P G K G V P
GGC GTG GGT GTT CCG GGT TTC GGC GTG CCG GGC GTG GGC GTA CCG
G V G V P G F G V P G V G V P
GGT AAA GGT GTT CCT GGC GTG GGT GTT CCG GGC TTC GGC GTG CCG
G K G V P G V G V P G F G V P
GGC GTG GGC GTA CCG GGT AAA GGT GTT CCT GGC GTG GGT GTT CCG
G V G V P G K G V P G V G V P
GGC TTC GGC GTG CCG GGC)4 TGG CCG TGA
G F G V P G W P ter

```

Figure S1. The coding DNA strand and the corresponding amino acid sequence of ELP in pET-25b vector.

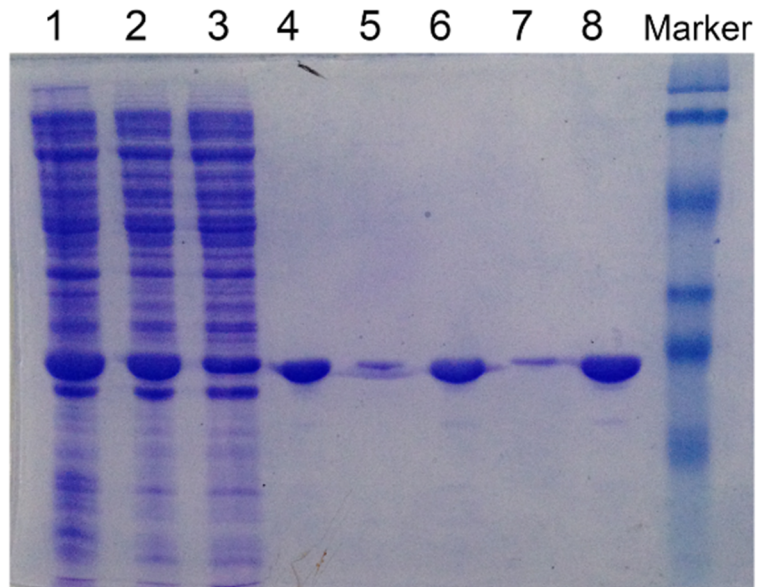


Figure S2. Coomassie brilliant blue stained SDS-PAGE of ELP. Lane 1: bacterium before ultrasonic; Lane 2: the supernatant after ultrasonic; Lane 3: the supernatant of the first hot round of ITC; Lane 4: the supernatant of the first cold round; Lane 5: the supernatant of the second hot round; Lane 6: the supernatant of the second cold round; Lane 7: the supernatant of the third hot round; Lane 8: ELP after three rounds of ITC; Lane 9: protein molecular mass marker (120, 85, 50, 35, 25, 20 kDa from top to bottom).

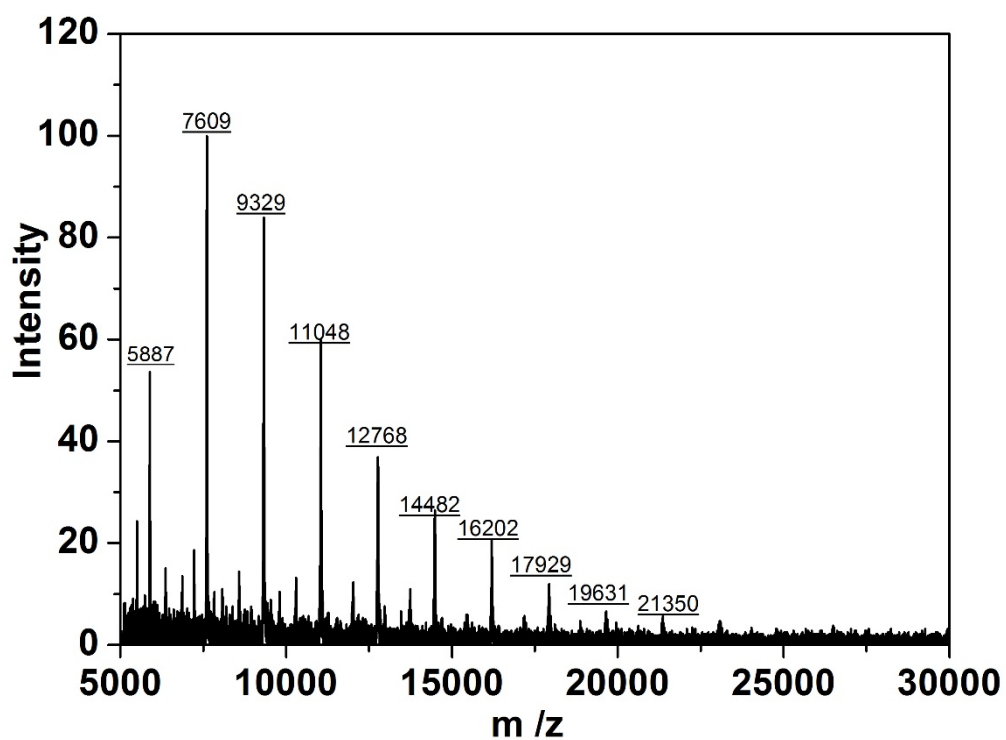


Figure S3. MALDI-TOF analysis of ELP in an 50% acetonitrile solution containing 0.1% trifluoroacetic acid using a sinapinic acid matrix.

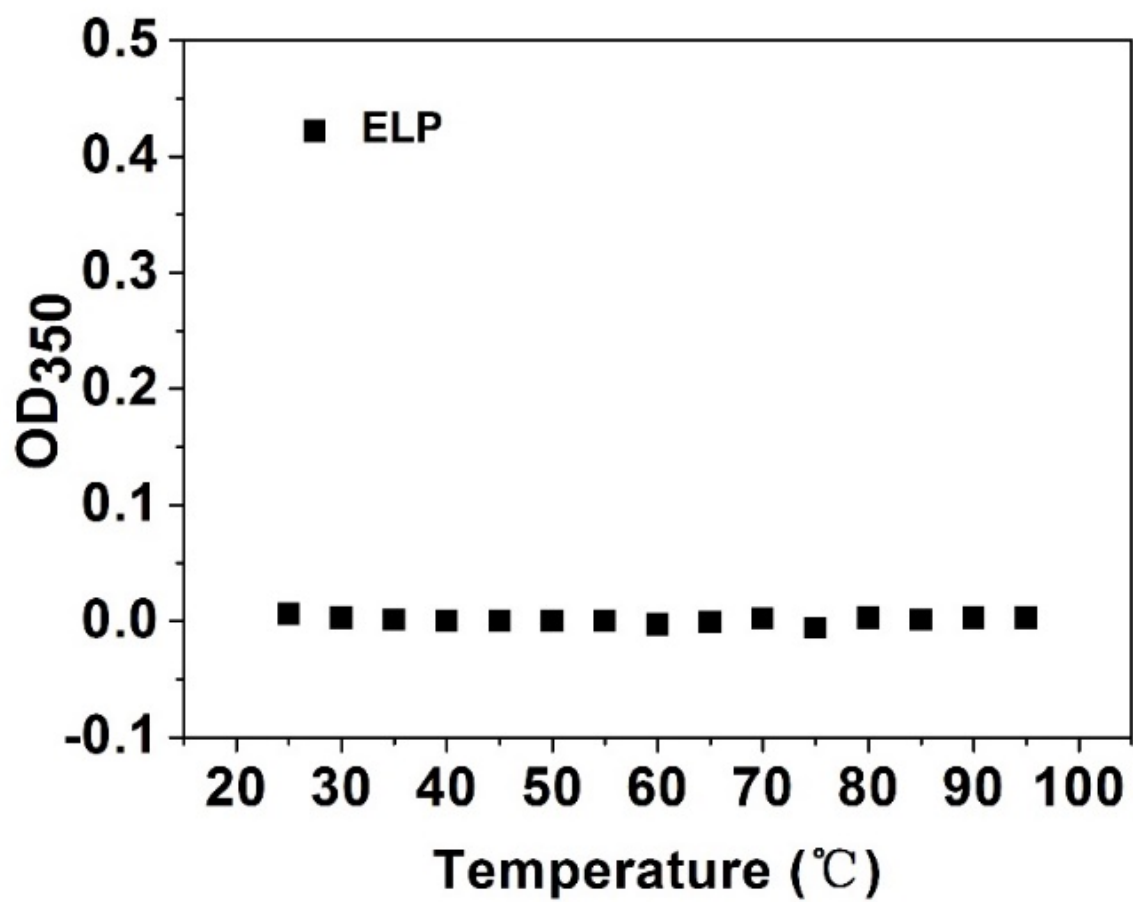


Figure S4. OD₃₅₀ of ELP solution under similar particle preparation condition.

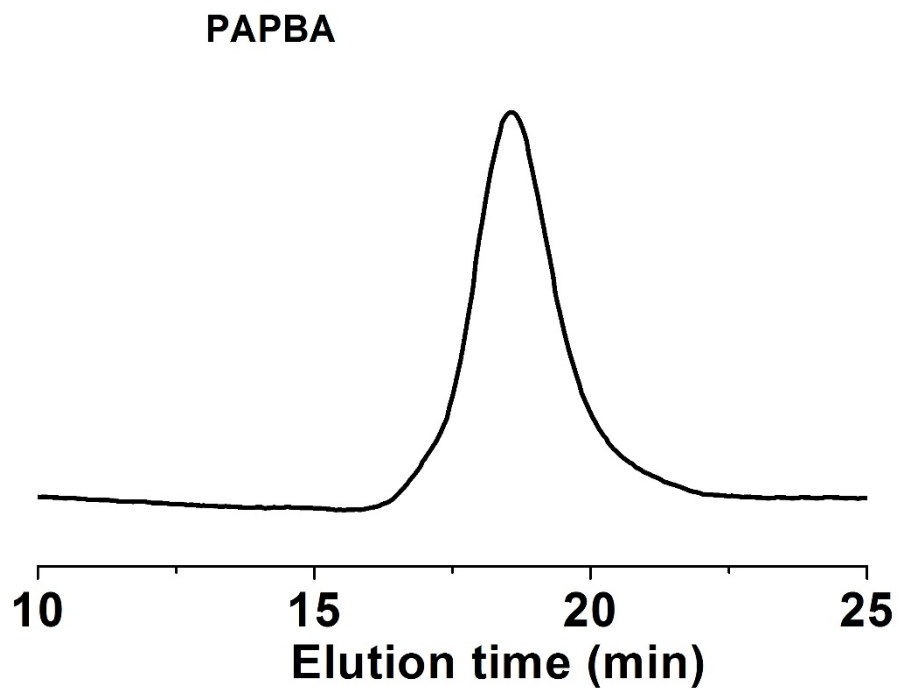


Figure S5. GPC spectrum of PAPBA extracted from ELP-PAPBA nanoparticles in PBS with pH 9.5.