

**Diblock Copolymer Glyco-nanomicelles Constructed by Maltoheptaose-based
Amphiphile for Reduction- and pH-mediated Intracellular Drug Delivery**

Lulu Cheng,^{‡^a} Tingting Luan,^{‡^a} Di Liu,^{‡^b} Ju Cheng,^b Hongping Li,^a Hua Wei,^a Lifeng Zhang,^a Jingfeng Lan,^a Yali Liu,^c and Guanghui Zhao^{a,*}

^a State Key Laboratory of Applied Organic Chemistry, Institute of Biochemical Engineering & Environmental Technology, College of Chemistry and Chemical Engineering, Lanzhou University, Lanzhou 730000, People's Republic of China.

^b School of Basic Medical Sciences, Lanzhou University, Lanzhou 730000, People's Republic of China.

^c Gansu Provincial Maternity and Child-care Hospital, Lanzhou 730050, People's Republic of China.

[‡] These authors contributed equally to this work and should be considered co-first authors.

* Corresponding Author, E-mail: zhaogh@lzu.edu.cn

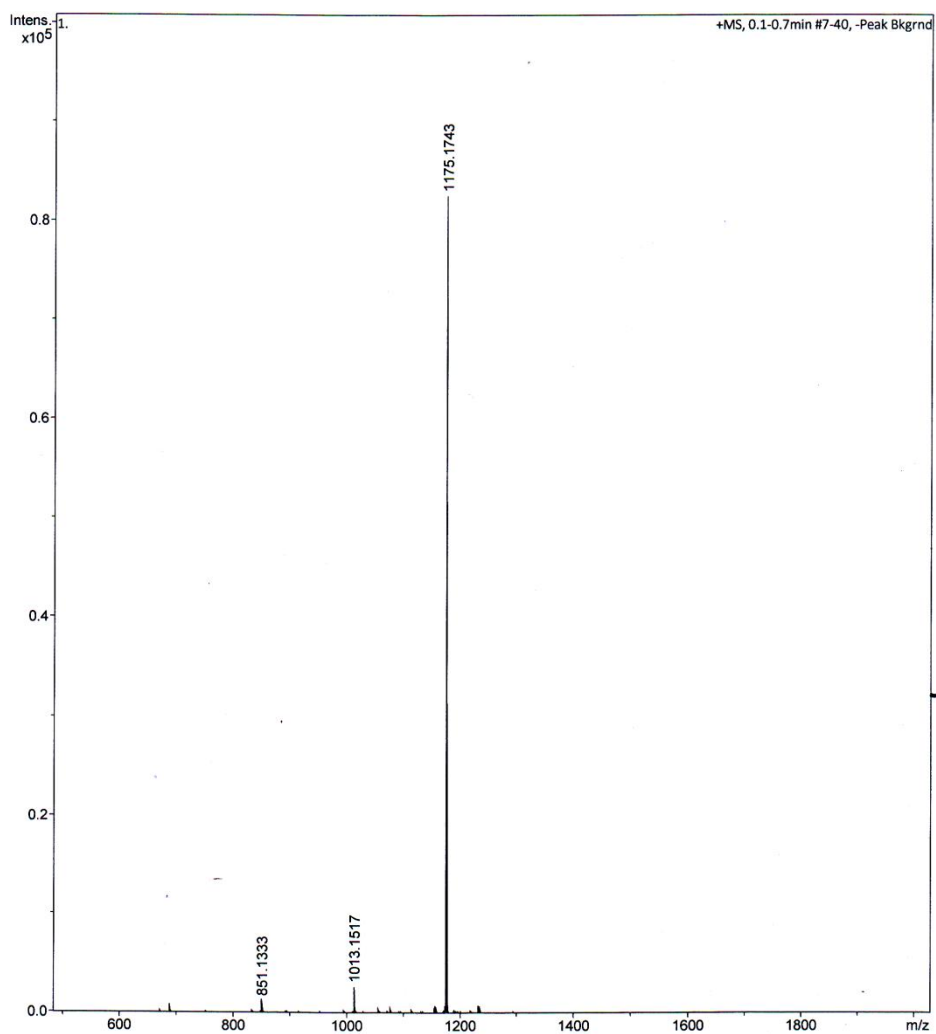


Figure S1. HRMS-ESI of MH.

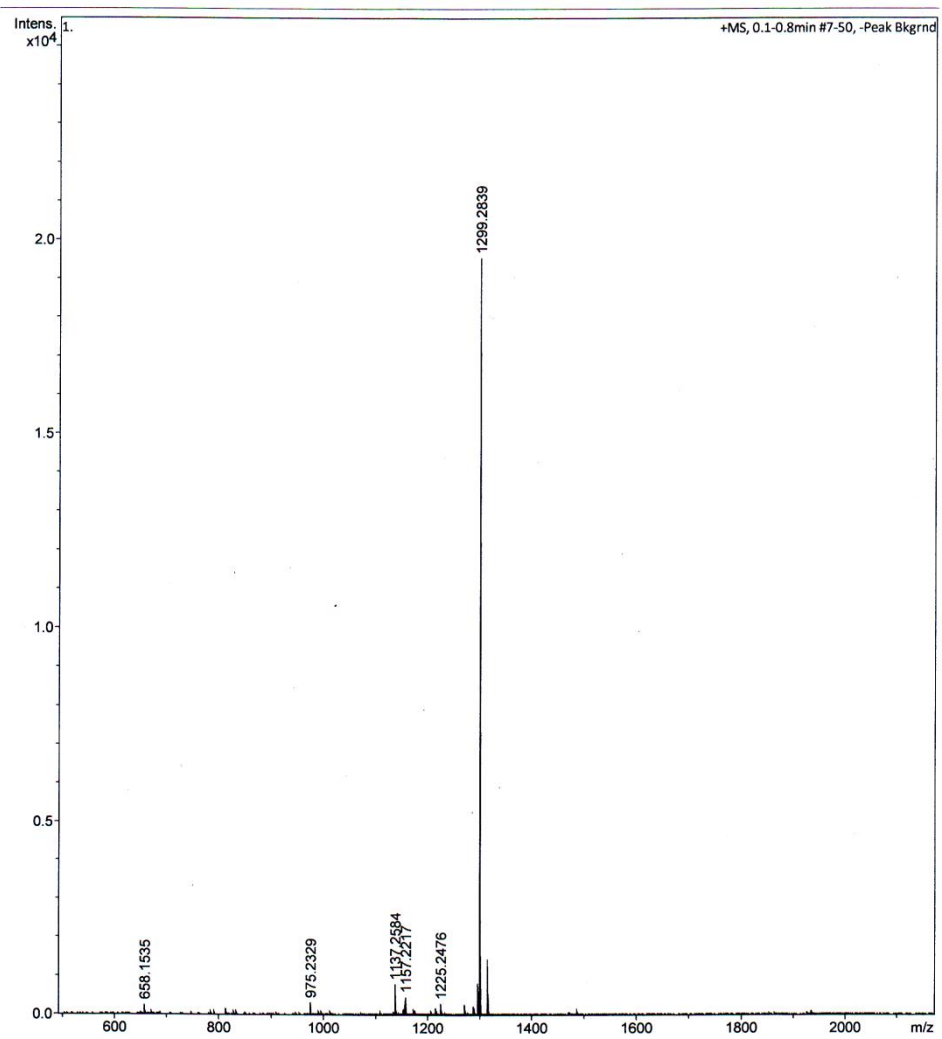


Figure S2. HRMS-ESI of MH-N₃.

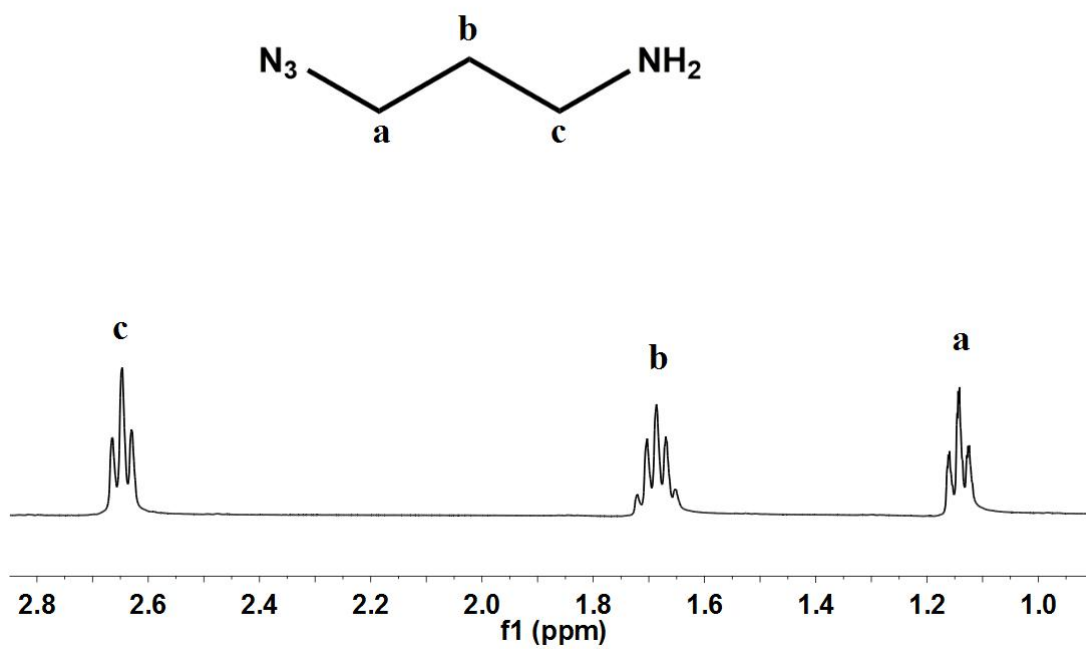


Figure S3. ¹H NMR of 3-azidopropylamine.

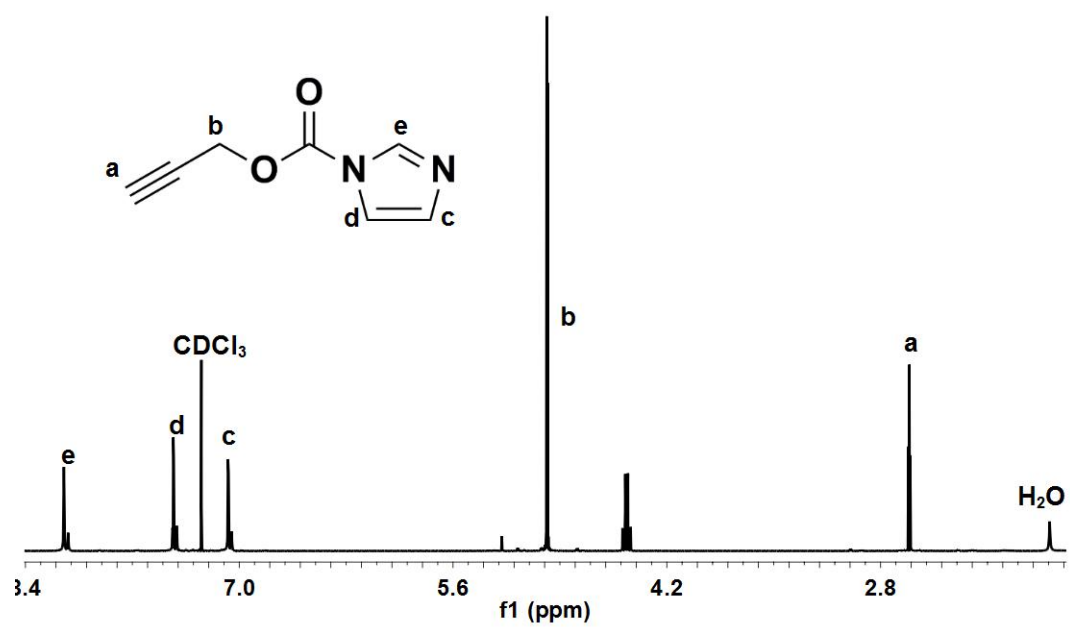


Figure S4. ¹H NMR of propargyl carbonylimidazole.

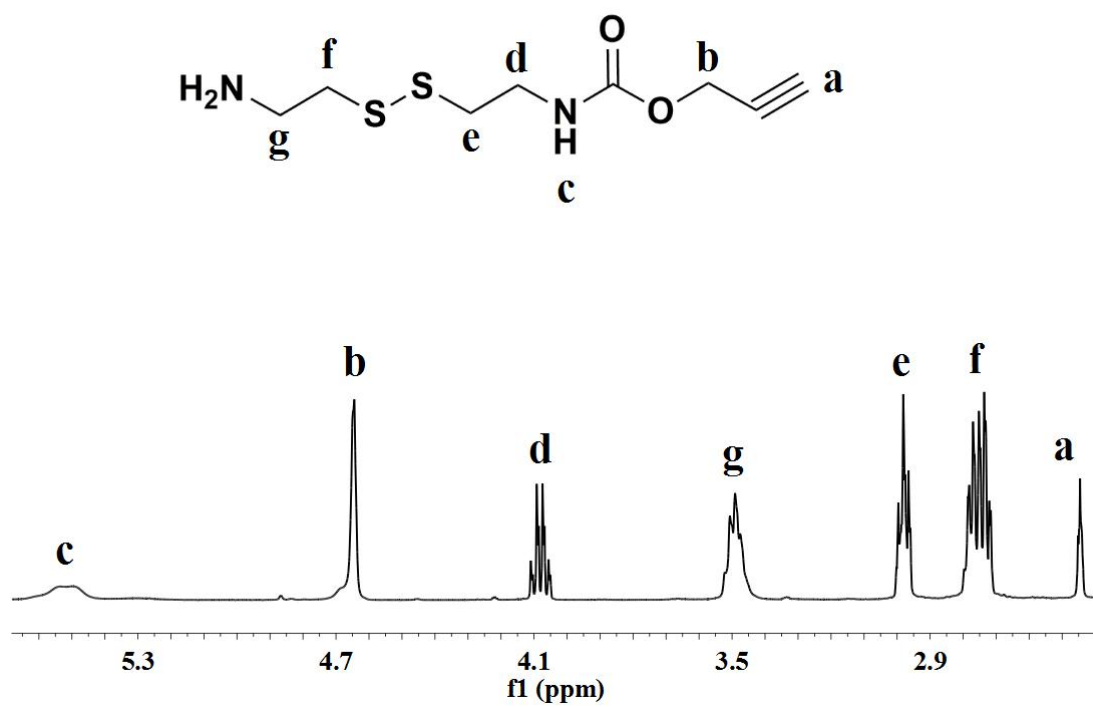


Figure S5. ¹H NMR of propargyl cystamine.

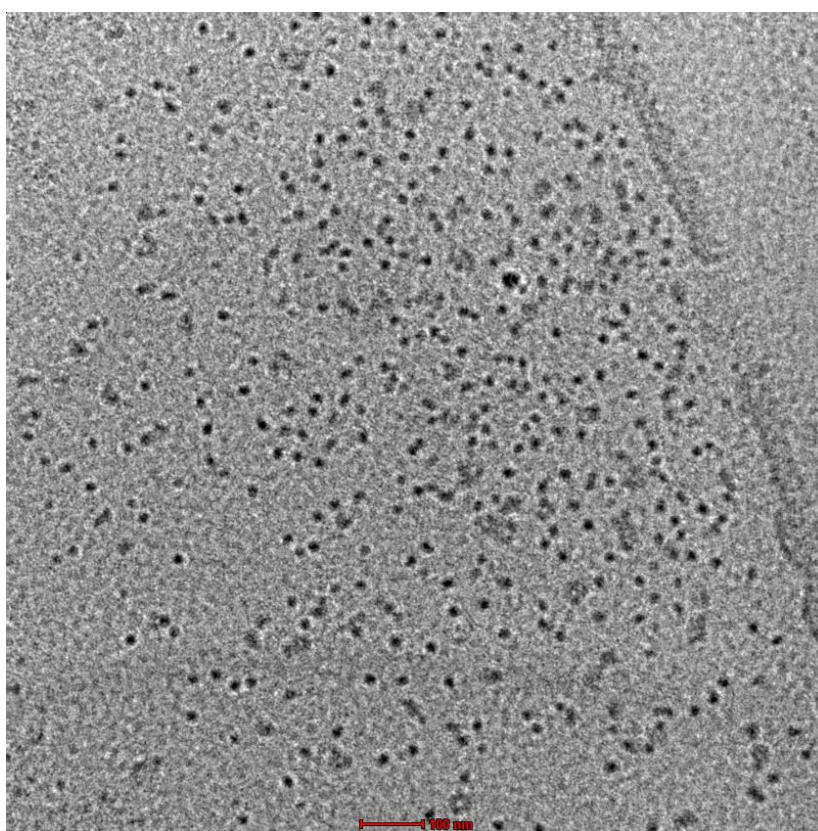


Figure S6. TEM images of DOX-loaded MH-S-S-AcMH micelle.

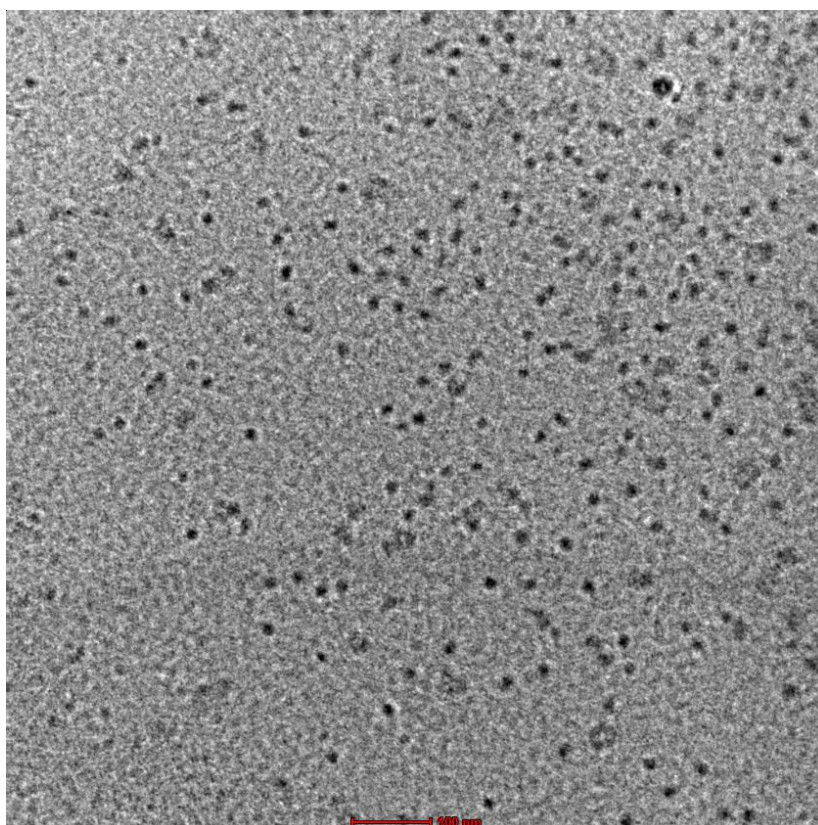


Figure S7. TEM images of MH-S-S-AcMH micelle.

	Size (d.n...	% Intensity:	St Dev (d.n...
Z-Average (d.nm): 118.3	Peak 1: 147.5	100.0	70.21
Pdl: 0.201	Peak 2: 0.000	0.0	0.000
Intercept: 0.964	Peak 3: 0.000	0.0	0.000
Result quality Good			

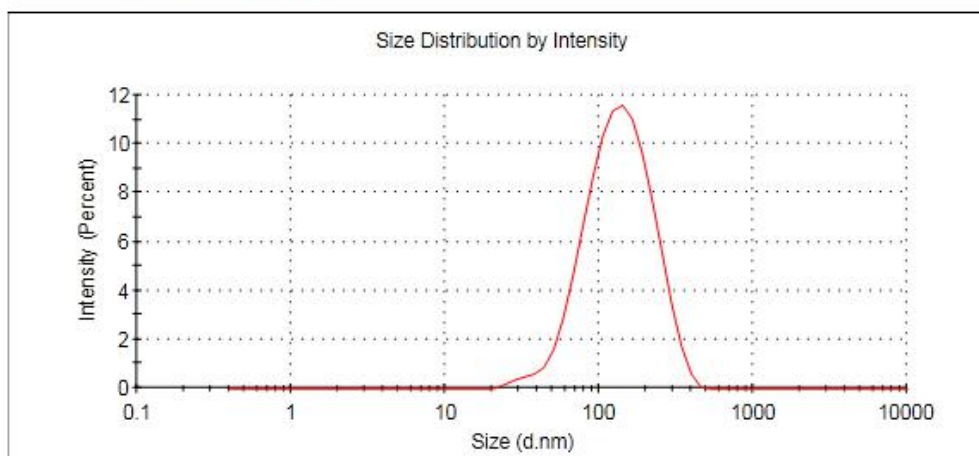


Figure S8. Size distributions of DOX-loaded MH-S-S-AcMH micelle.

	Size (d.n...	% Intensity:	St Dev (d.n...
Z-Average (d.nm): 93.77	Peak 1: 119.3	99.3	56.28
Pdl: 0.205	Peak 2: 21.19	0.7	4.262
Intercept: 0.906	Peak 3: 0.000	0.0	0.000

Result quality Good

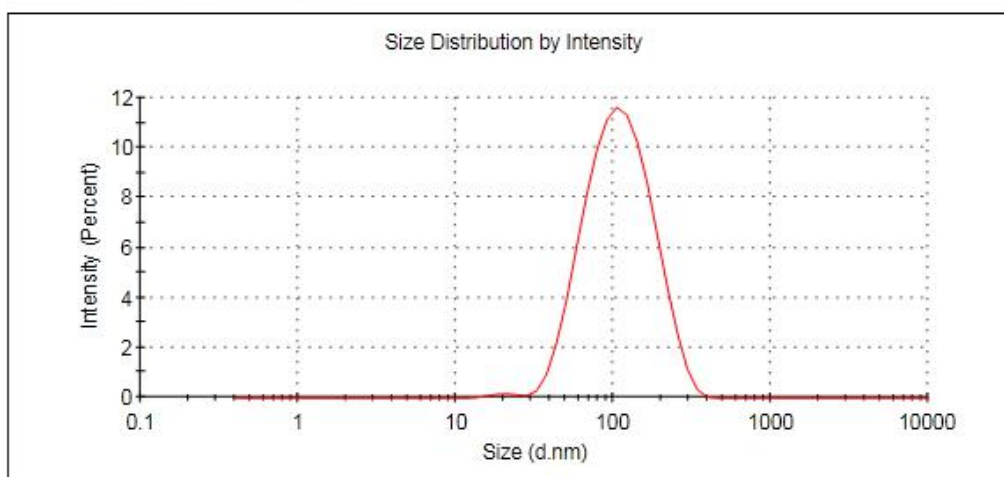


Figure S9. Size distributions of MH-S-S-AcMH micelle.

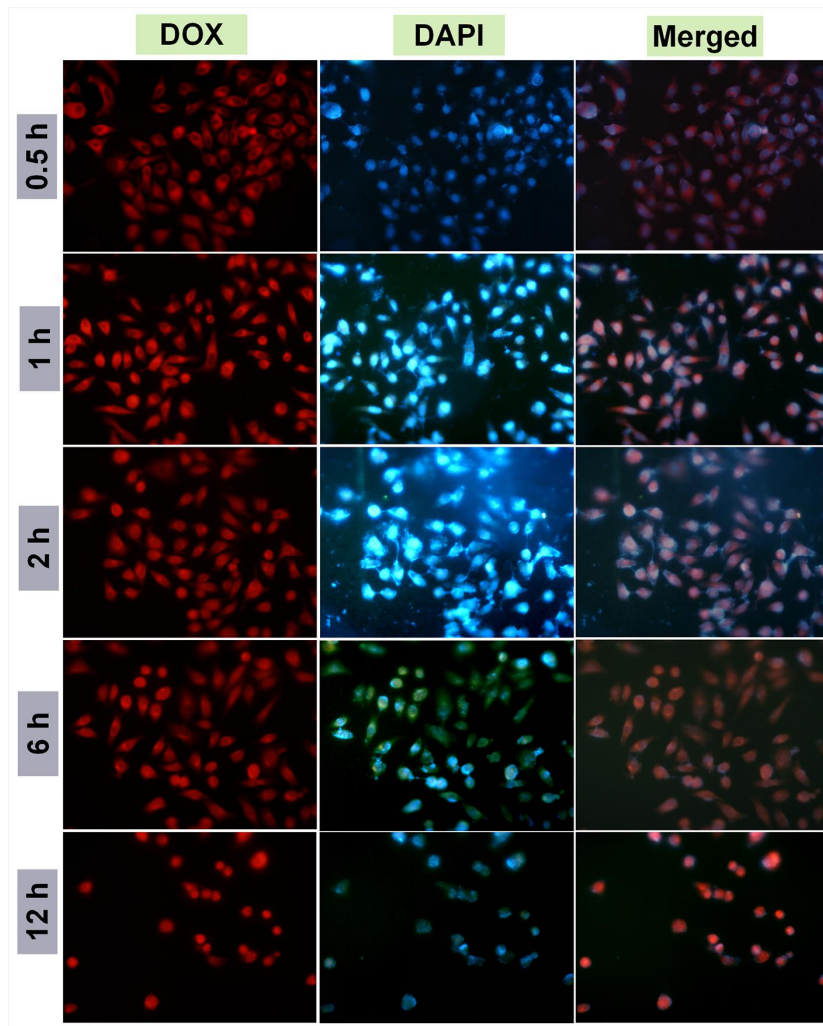


Figure S10. Fluorescence microscope images of HeLa cells after different times incubation with free

DOX