

Supporting information

Ecofriendly preparation of graphene sheet decorated with ethylenediamine copper (II) complex composite fabricated electrode for selective detection of hydroquinone in water

Subramanian Sakthinathan^a, Thangavelu Kokulnathan^b, Shen-Ming Chen^{*b} Raj Karthik^b, Te-Wei Chiu^{*a}

^aDepartment of Materials and Mineral Resources Engineering, National Taipei University of Technology, Taipei, 106 Taiwan. Email : tewei@ntut.edu.tw

^bElectroanalysis and Bioelectrochemistry Lab, Department of Chemical Engineering and Biotechnology, National Taipei University of Technology, No.1, Section 3, Chung-Hsiao East Road, Taipei 106, Taiwan (R.O.C). E-mail: smchen78@ms15.hinet.net

Corresponding authors

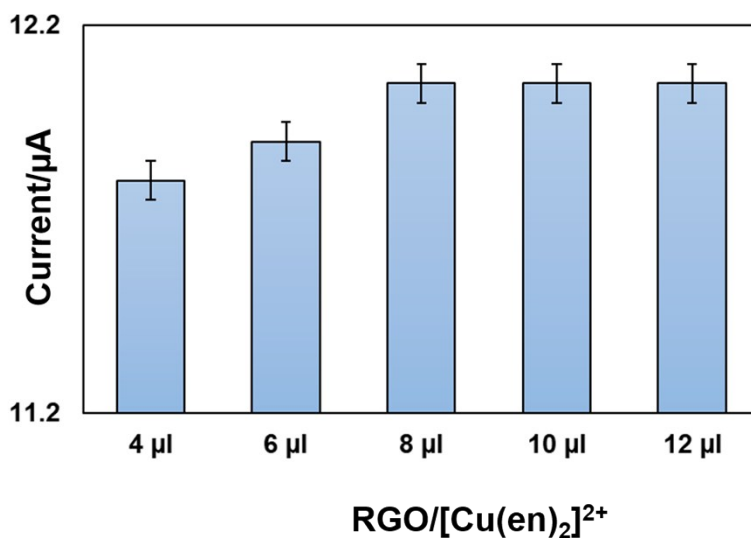
Te-Wei Chiu, Fax: +886-2-2731-7185, Tel: +886-2-2771-2171

Email : tewei@ntut.edu.tw

S. M. Chen, Fax: +886 2270 25238; Tel: +886 2270 17147

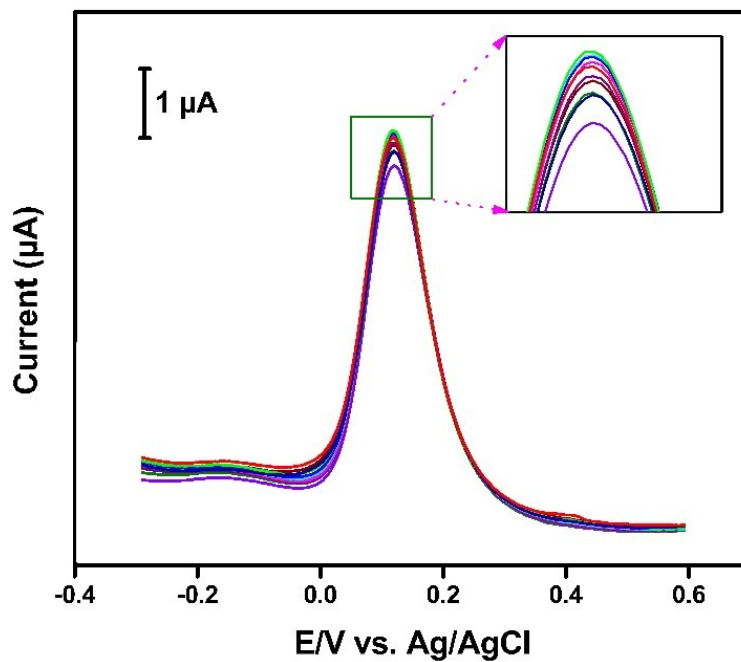
E-mail: smchen78@ms15.hinet.net

S. Figure 1



S. Figure 1 Optimization of loading of RGO/[Cu(en)₂]²⁺ nanocomposite on GCE.

S. Figure 2



S. Figure 2 Interference studies of the GCE/RGO/[Cu(en)₂]²⁺ modified electrode towards detection of (a) HQ.