

Supporting Information

6,6',11,11'-Tetra((triisopropylsilyl)ethynyl)-anti-[2.2](1,4)tetracenophane: A Covalently Coupled Tetracene Dimer and its Structural, Electrochemical, and Photophysical Characterization

Holger F. Bettinger,^{a,*} Ralf Einholz,^a Andreas Göttler,^a Marc Junge,^a Marie-Sophie Sättele,^a Andreas Schnepf,^b Claudio Schrenk,^b Simon Schundelmeier,^a and Bernd Speiser^a

^a *Institut für Organische Chemie, Universität Tübingen, Auf der Morgenstelle 18, 72076 Tübingen, Germany.*

E-Mail: holger.bettinger@uni-tuebingen.de

^b *Institut für Anorganische Chemie, Universität Tübingen, Auf der Morgenstelle 18, 72076 Tübingen, Germany*

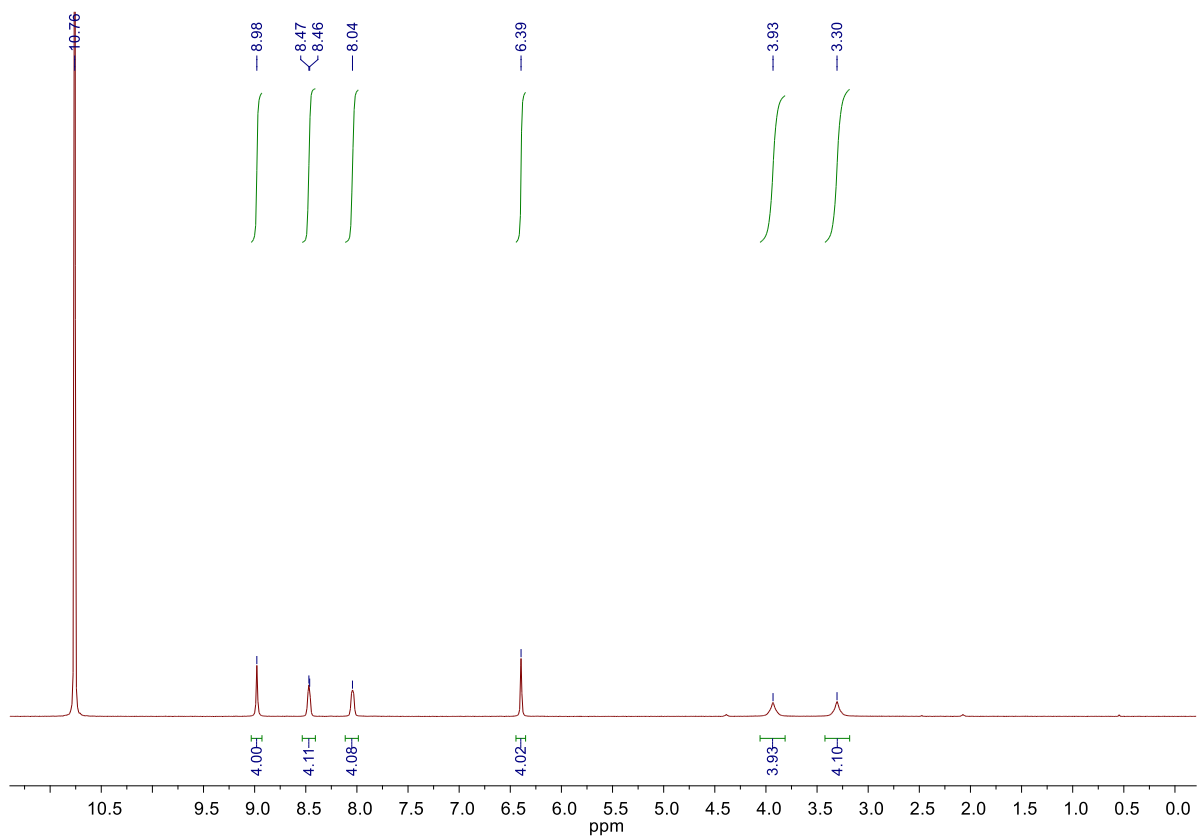


Figure S1. $^1\text{H-NMR}$ of **6** in D_2SO_4 .

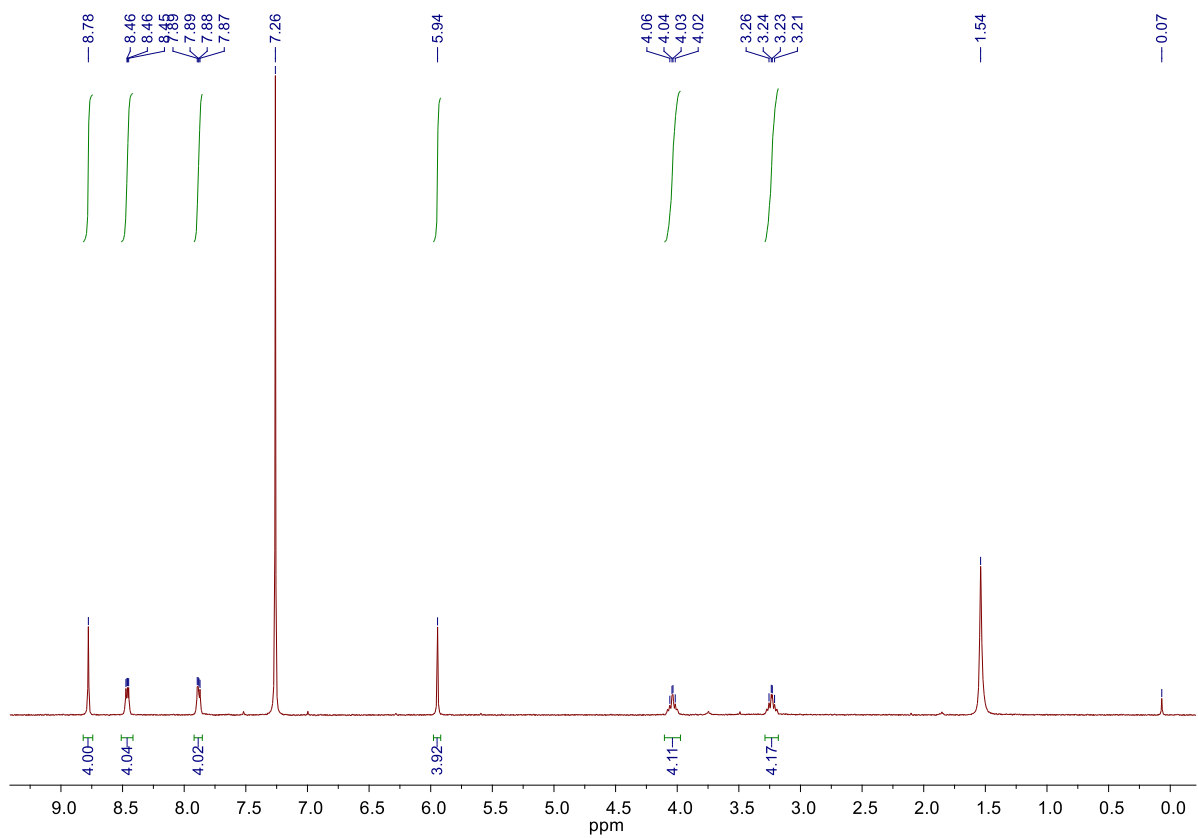


Figure S2. $^1\text{H-NMR}$ of **7** in CDCl_3 .

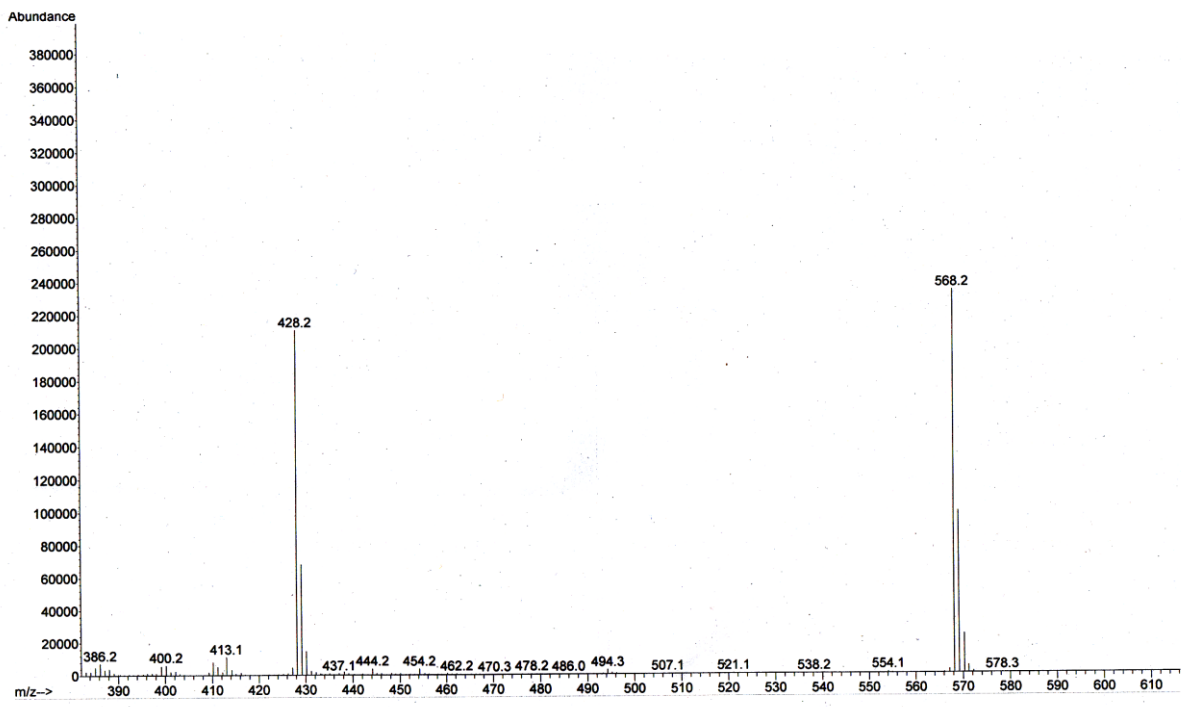


Figure S3. EI-MS (70 eV) of **7**.

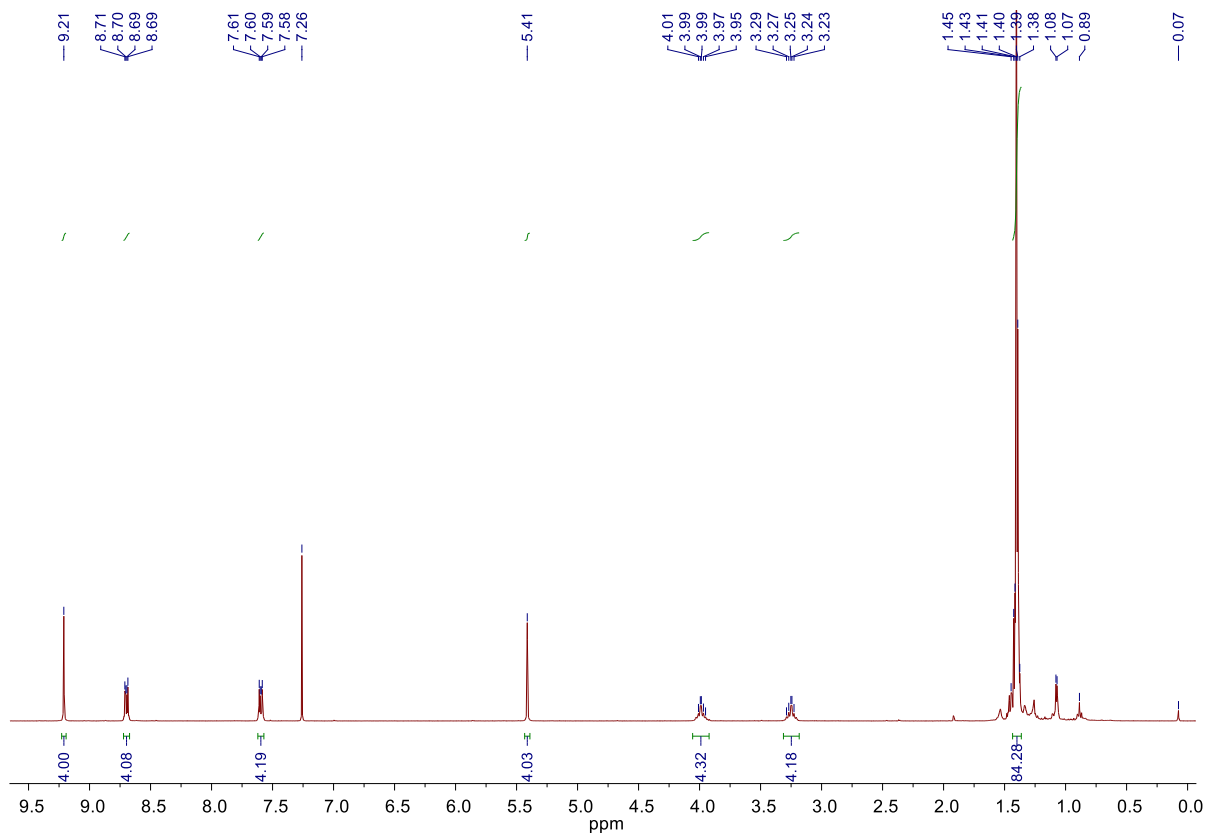


Figure S4. ^1H -NMR of **2** in CDCl_3 .

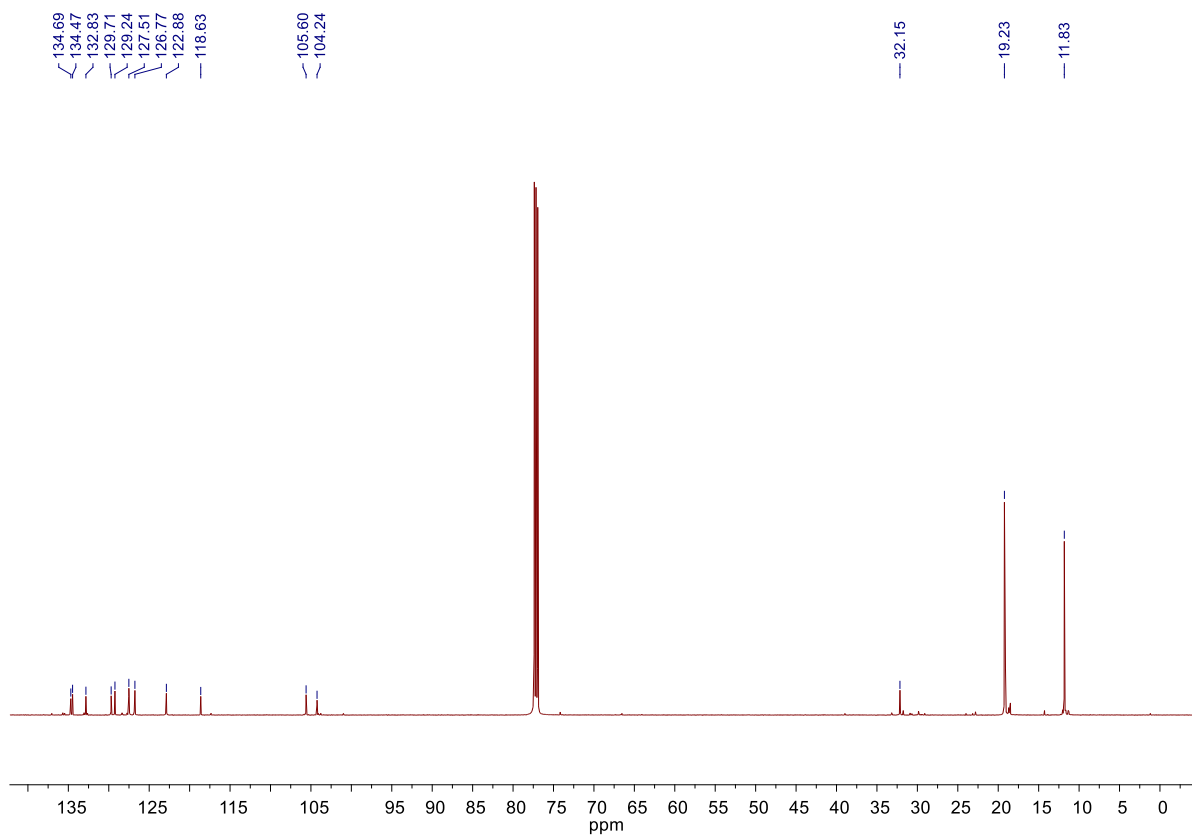


Figure S5. $^{13}\text{C}\{^1\text{H}\}$ -NMR of **2** in CDCl_3 .

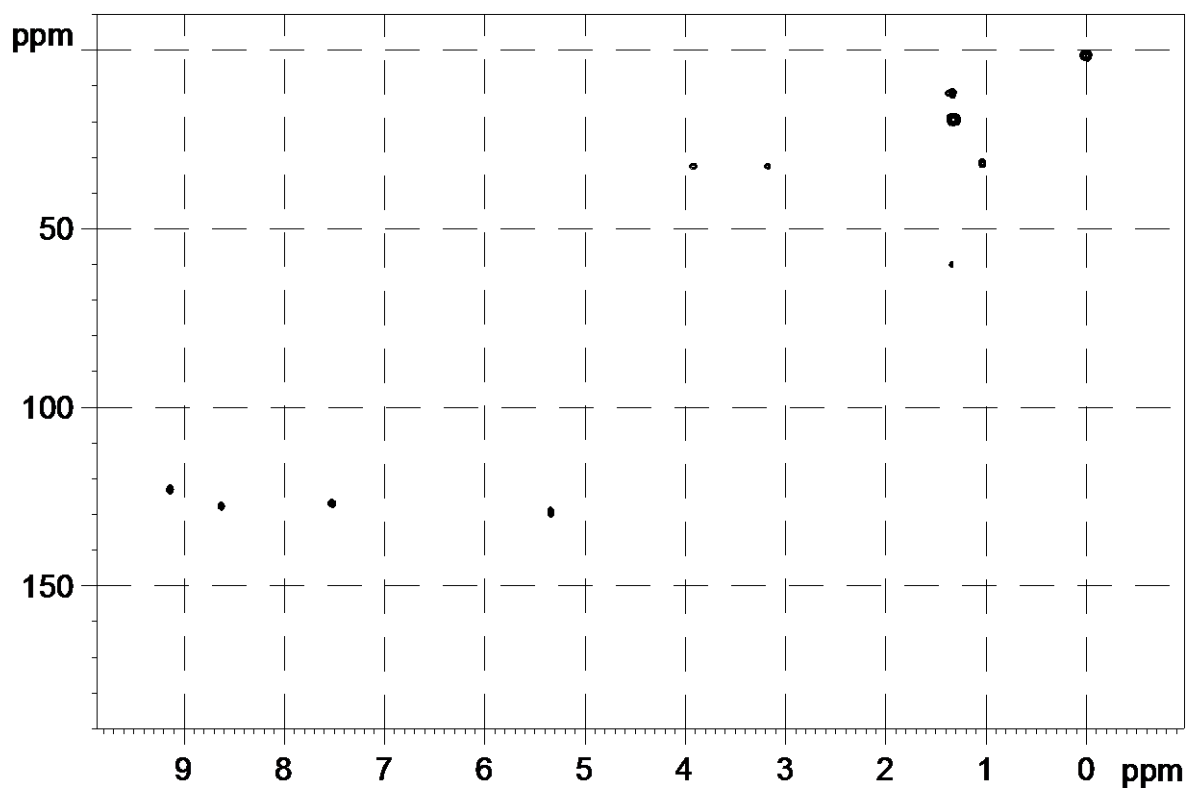


Figure S6. HSQC-NMR of **2** in CDCl₃.

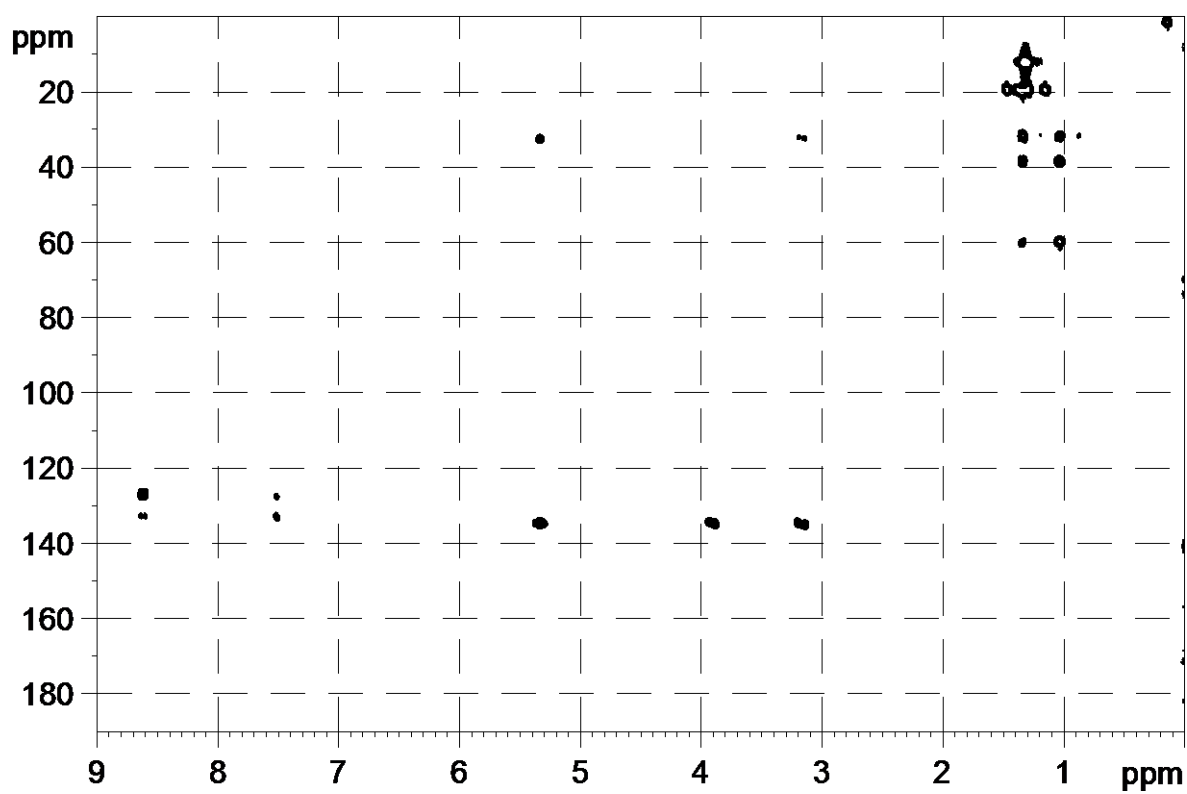


Figure S7. HMBC-NMR of **2** in CDCl₃.

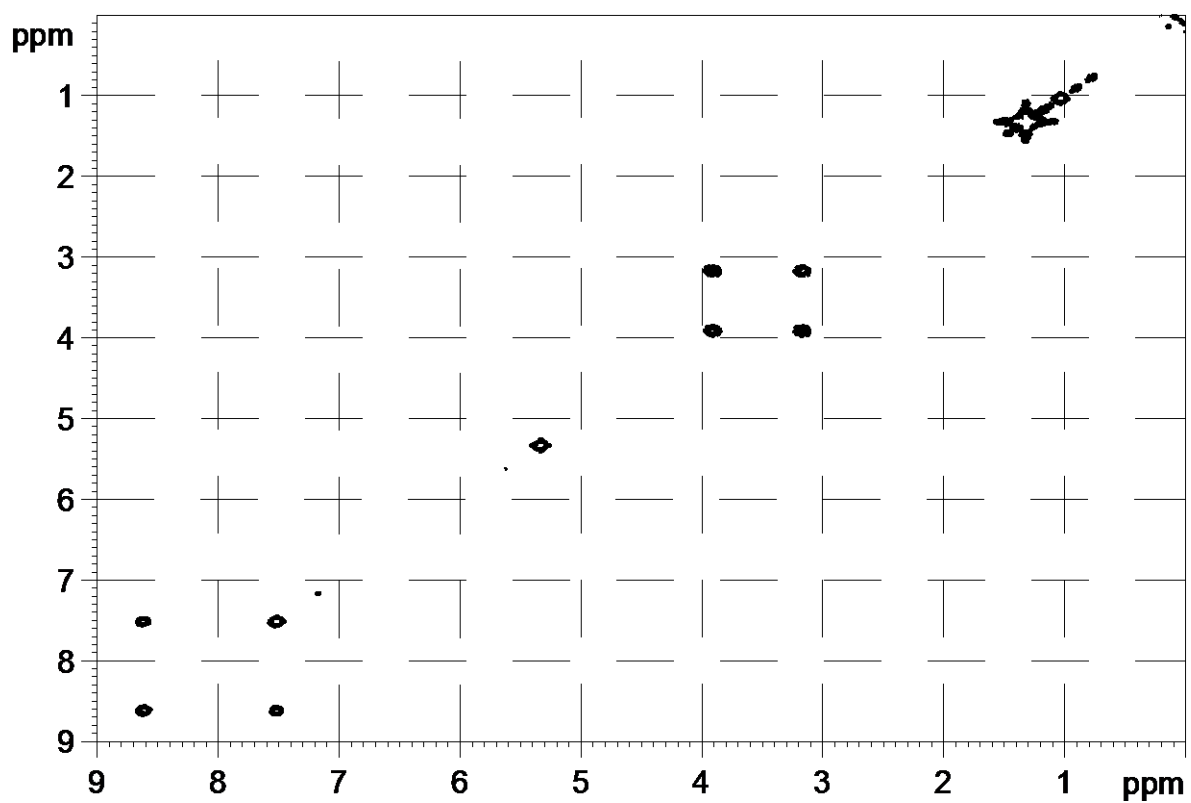


Figure S8. COSY-NMR of **2** in CDCl_3 .

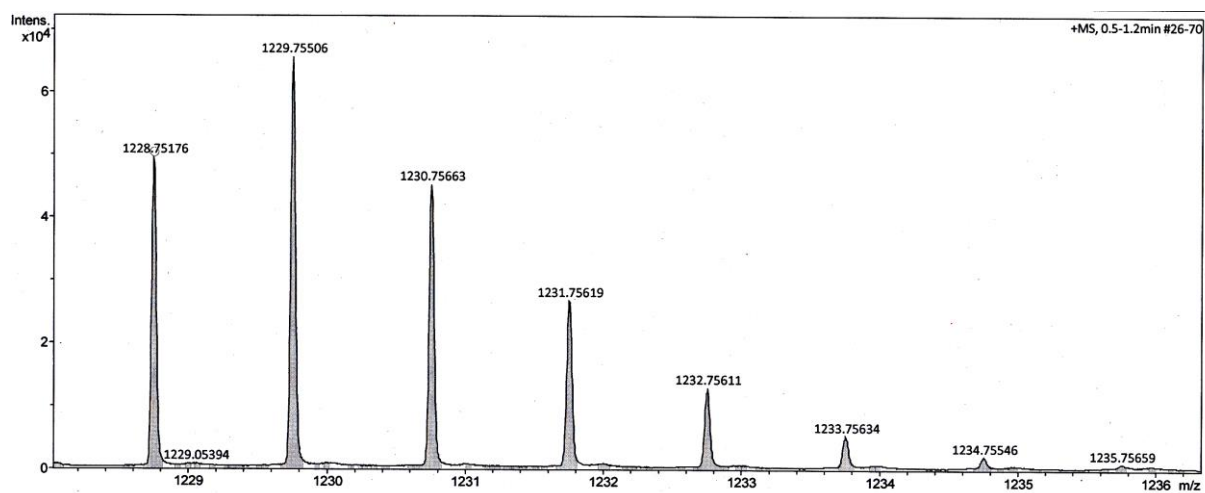


Figure S9. HR ESI/TOF mass spectrum of **2**. Exact mass: calc. 1228.7523 found 1228.7518 $[\text{M}]^+$