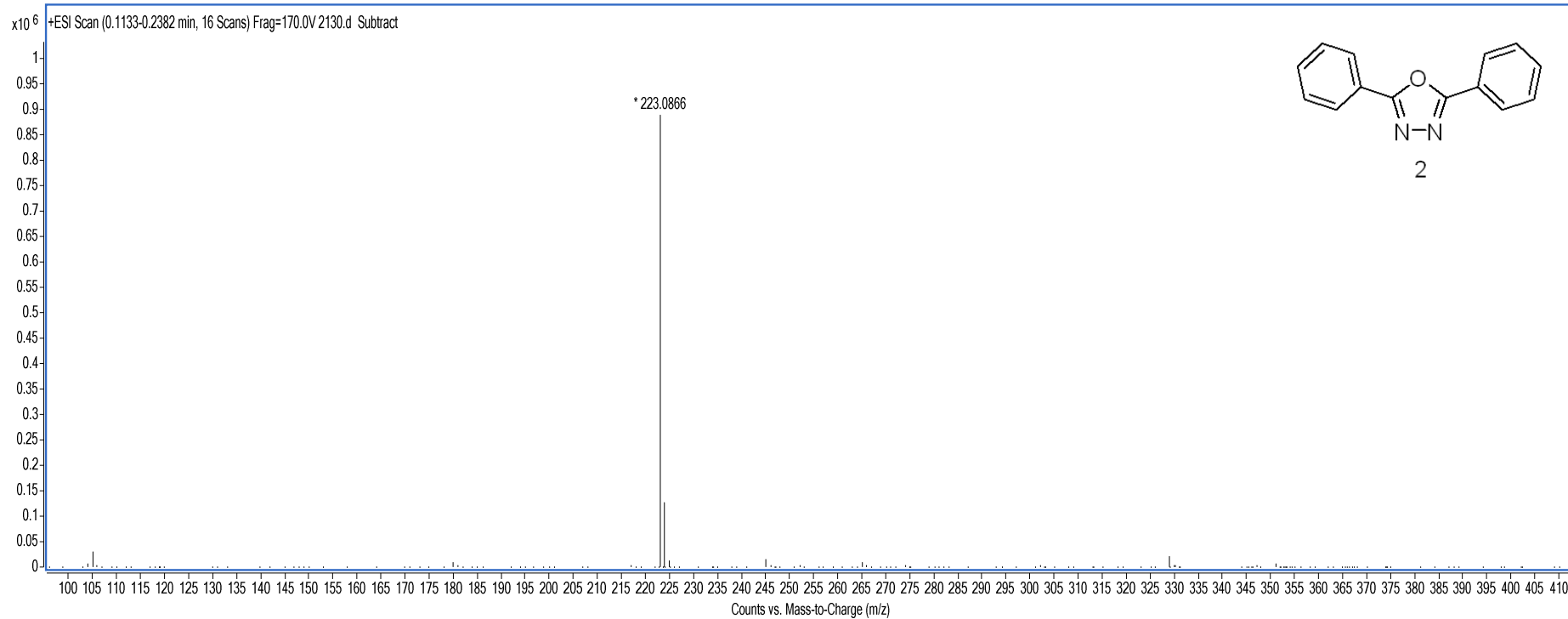


## Qualitative Analysis Report

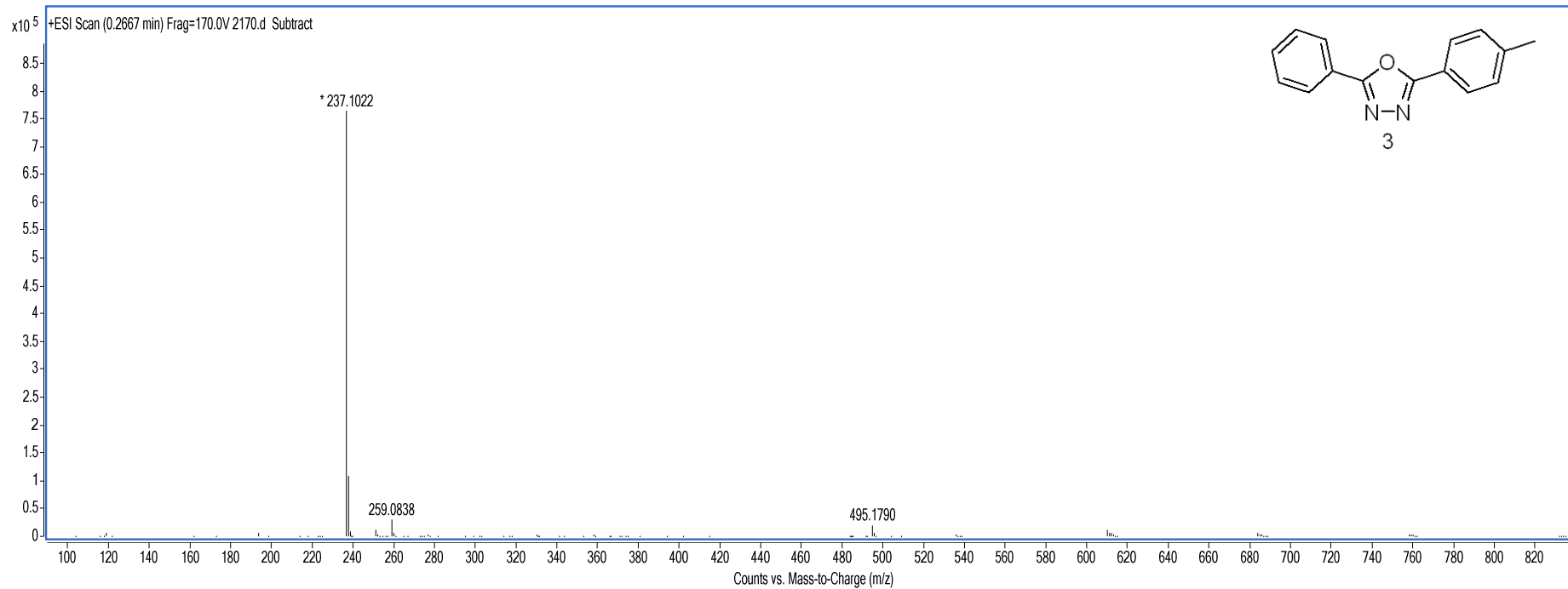
Data Filename	2130.d	Sample Name	HYL5001
Instrument Name	TOF G6230A	Acquired Time	2016-09-14
Acq Method	YCL.M	Acquired SW	6200 series TOF/6500 series
IRM Calibration Status	Success		
User Chormatograms			



## Qualitative Analysis Report

**Data Filename** 2170.d  
**Instrument Name** TOF G6230A  
**Acq Method** YCL.M  
**IRM Calibration Status** Success  
**User Chormatograms**

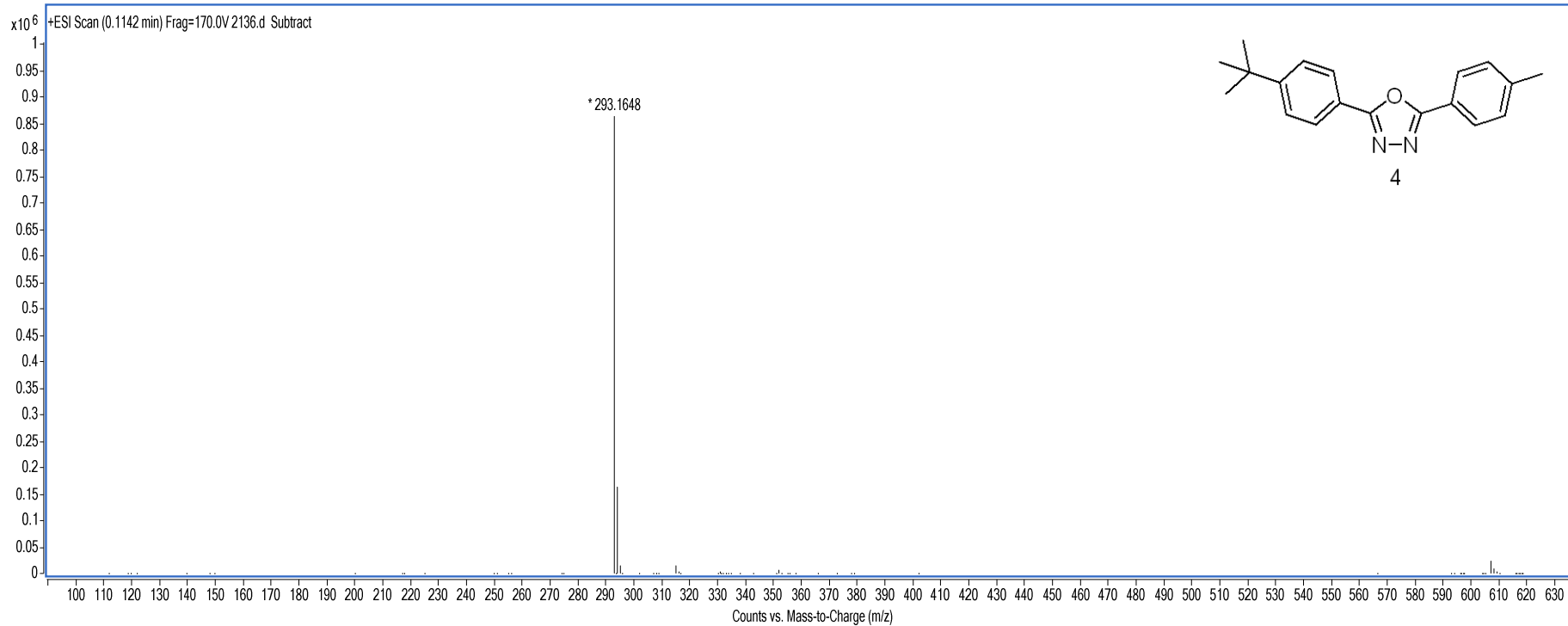
**Sample Name** HYL5022A  
**Acquired Time** 2016-09-19  
**Acquired SW** 6200 series TOF/6500 series



## Qualitative Analysis Report

**Data Filename** 2136.d  
**Instrument Name** TOF G6230A  
**Acq Method** YCL.M  
**IRM Calibration Status** Success  
**User Chromatograms**

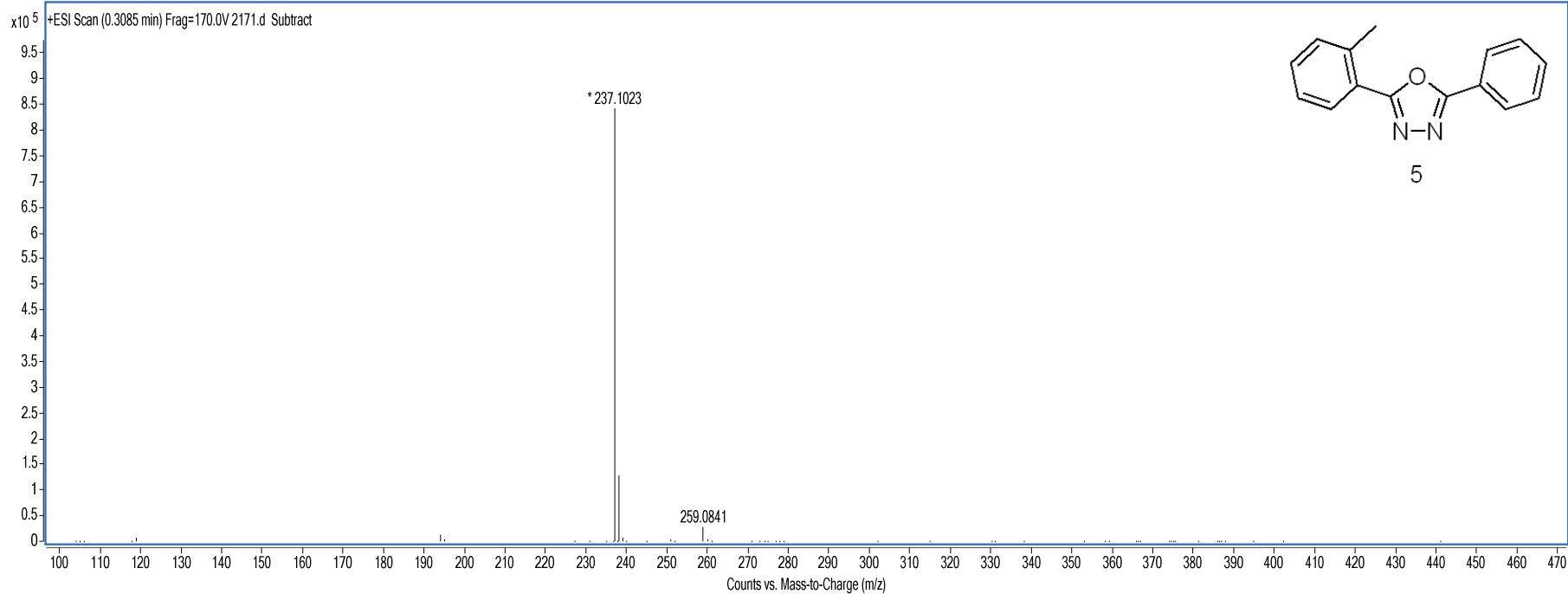
**Sample Name** HYL5035  
**Acquired Time** 2016-09-14  
**Acquired SW** 6200 series TOF/6500 series



## Qualitative Analysis Report

**Data Filename** 2171.d  
**Instrument Name** TOF G6230A  
**Acq Method** YCL.M  
**IRM Calibration Status** Success  
**User Chromatograms**

**Sample Name** HYL5022C  
**Acquired Time** 2016-09-19  
**Acquired SW** 6200 series TOF/6500 series

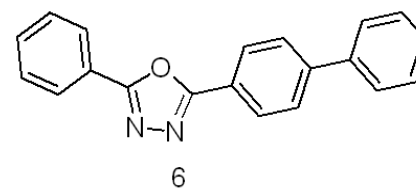
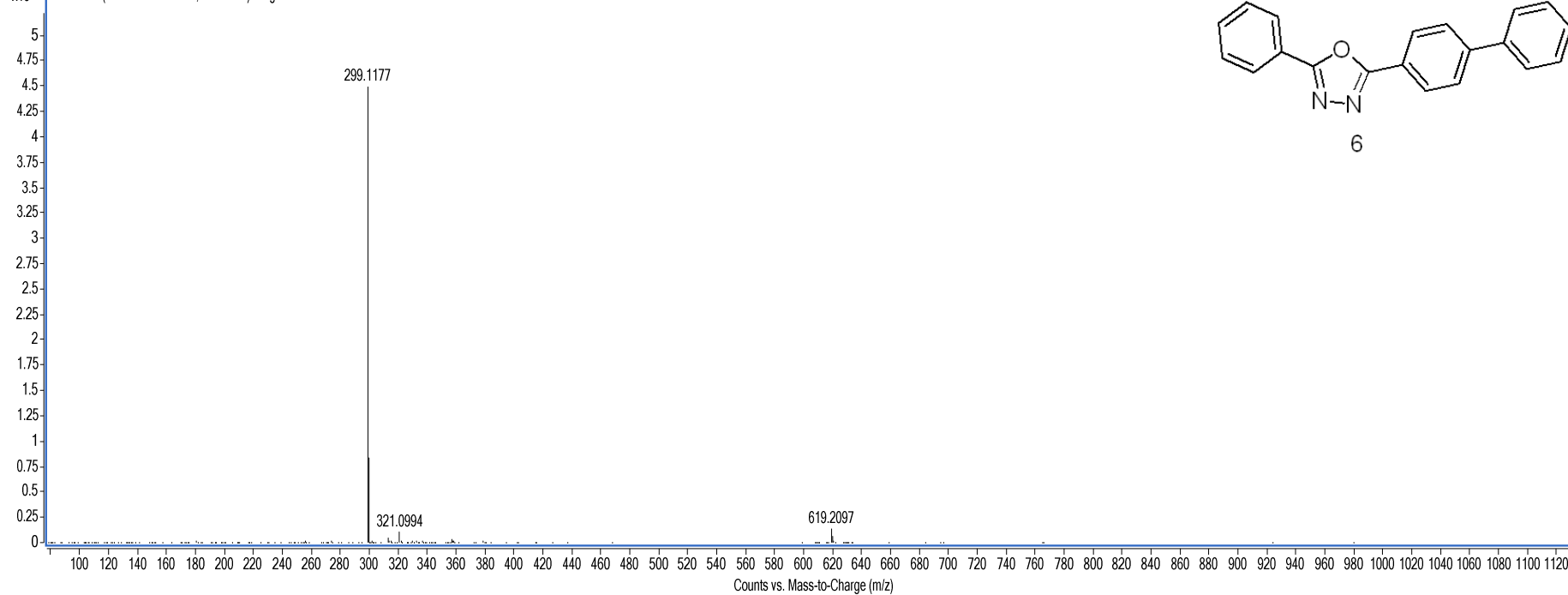


## Qualitative Analysis Report

**Data Filename** 2134.d  
**Instrument Name** TOF G6230A  
**Acq Method** YCL.M  
**IRM Calibration Status** Success  
**User Chormatograms**

**Sample Name** HYL5026  
**Acquired Time** 2016-09-14  
**Acquired SW** 6200 series TOF/6500 series

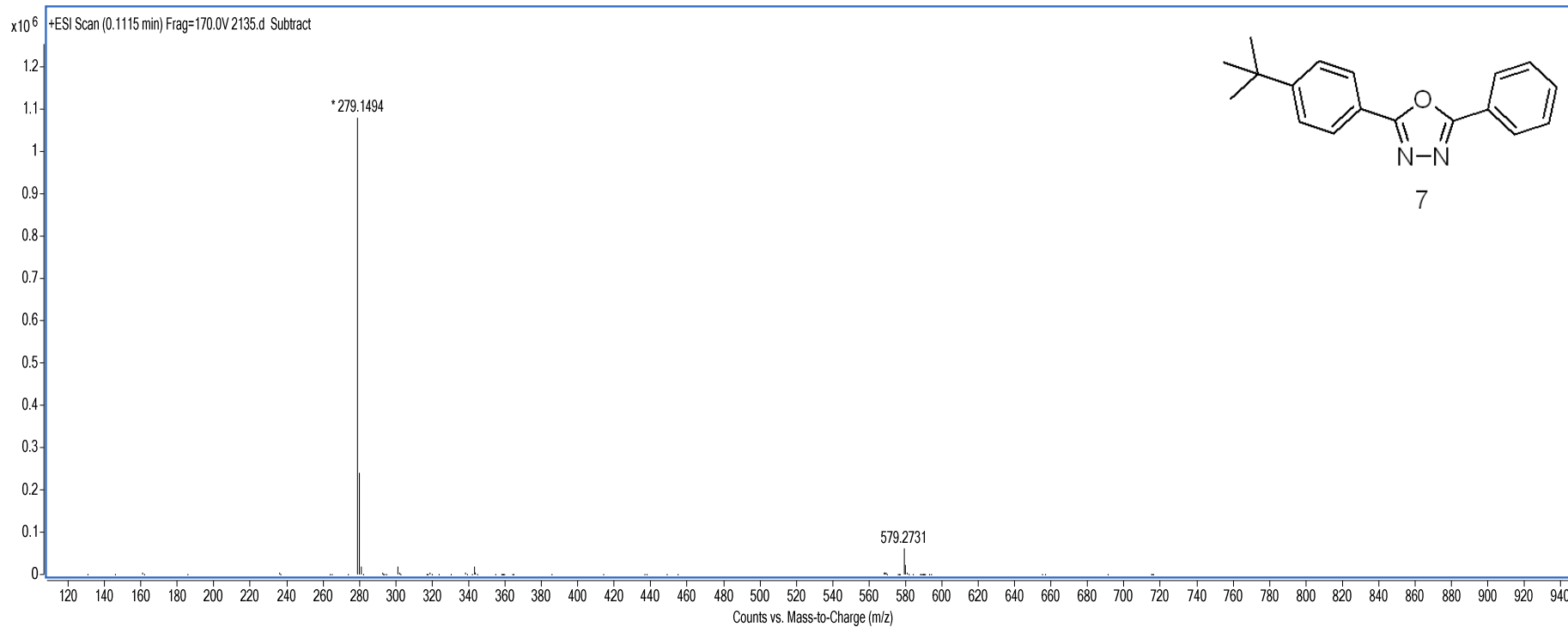
x10<sup>5</sup> +ESI Scan (0.0953-0.3619 min, 33 Scans) Frag=170.0V 2134.d Subtract



## Qualitative Analysis Report

**Data Filename** 2135.d  
**Instrument Name** TOF G6230A  
**Acq Method** YCL.M  
**IRM Calibration Status** Success  
**User Chromatograms**

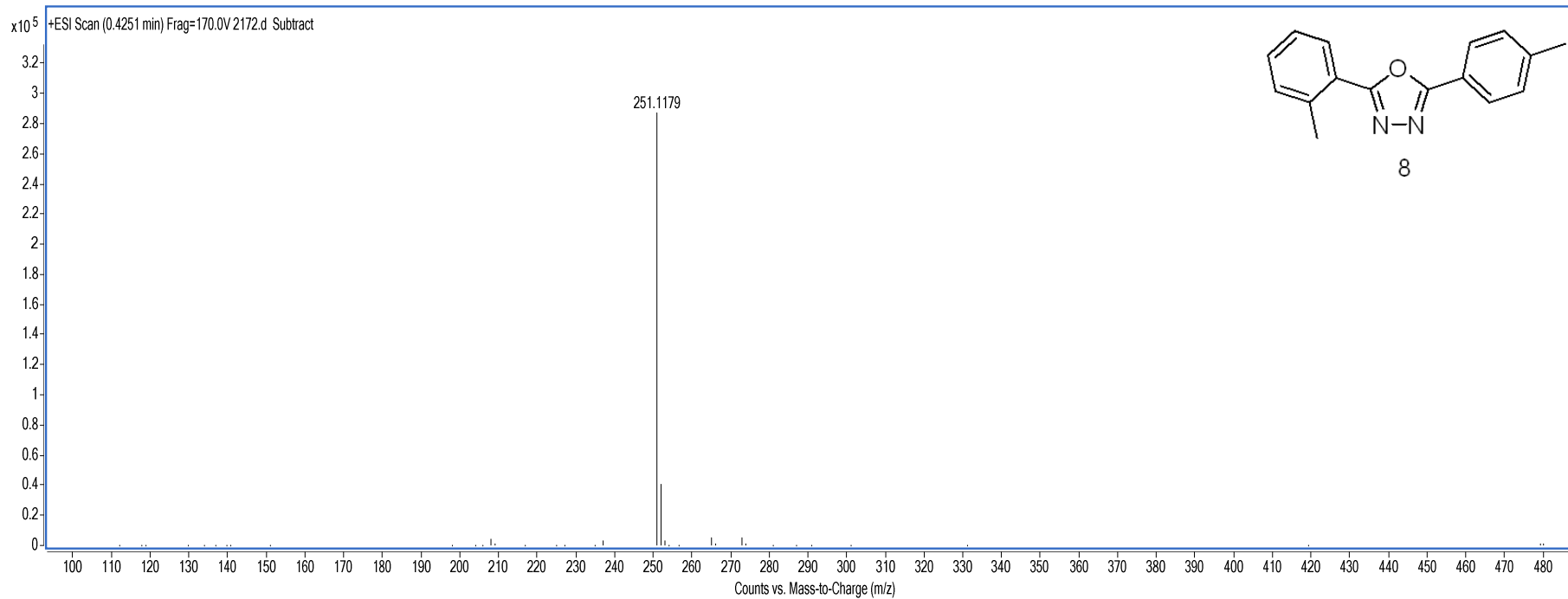
**Sample Name** HYL5032  
**Acquired Time** 2016-09-14  
**Acquired SW** 6200 series TOF/6500 series



## Qualitative Analysis Report

**Data Filename** 2172.d  
**Instrument Name** TOF G6230A  
**Acq Method** YCL.M  
**IRM Calibration Status** Success  
**User Chromatograms**

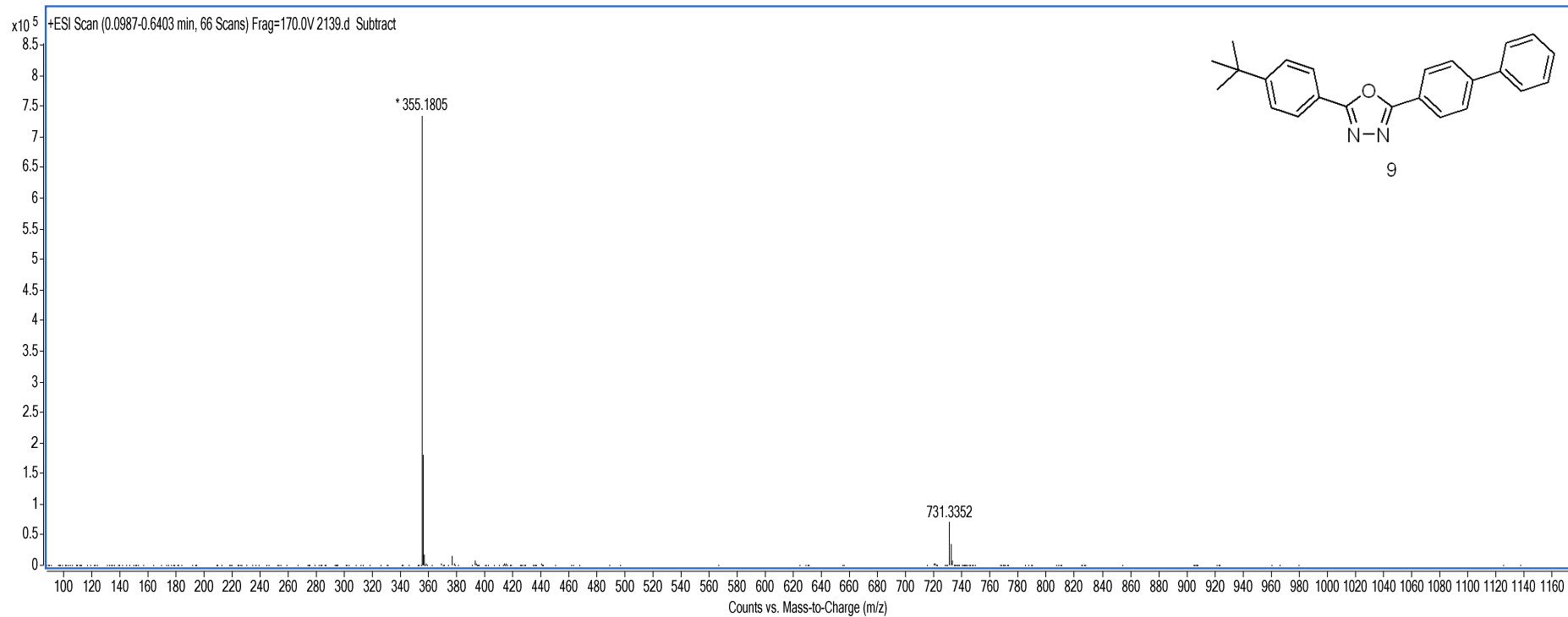
**Sample Name** HYL5024A  
**Acquired Time** 2016-09-19  
**Acquired SW** 6200 series TOF/6500 series



## Qualitative Analysis Report

**Data Filename** 2139.d  
**Instrument Name** TOF G6230A  
**Acq Method** YCL.M  
**IRM Calibration Status** Success  
**User Chromatograms**

**Sample Name** HYL5037  
**Acquired Time** 2016-09-14  
**Acquired SW** 6200 series TOF/6500 series

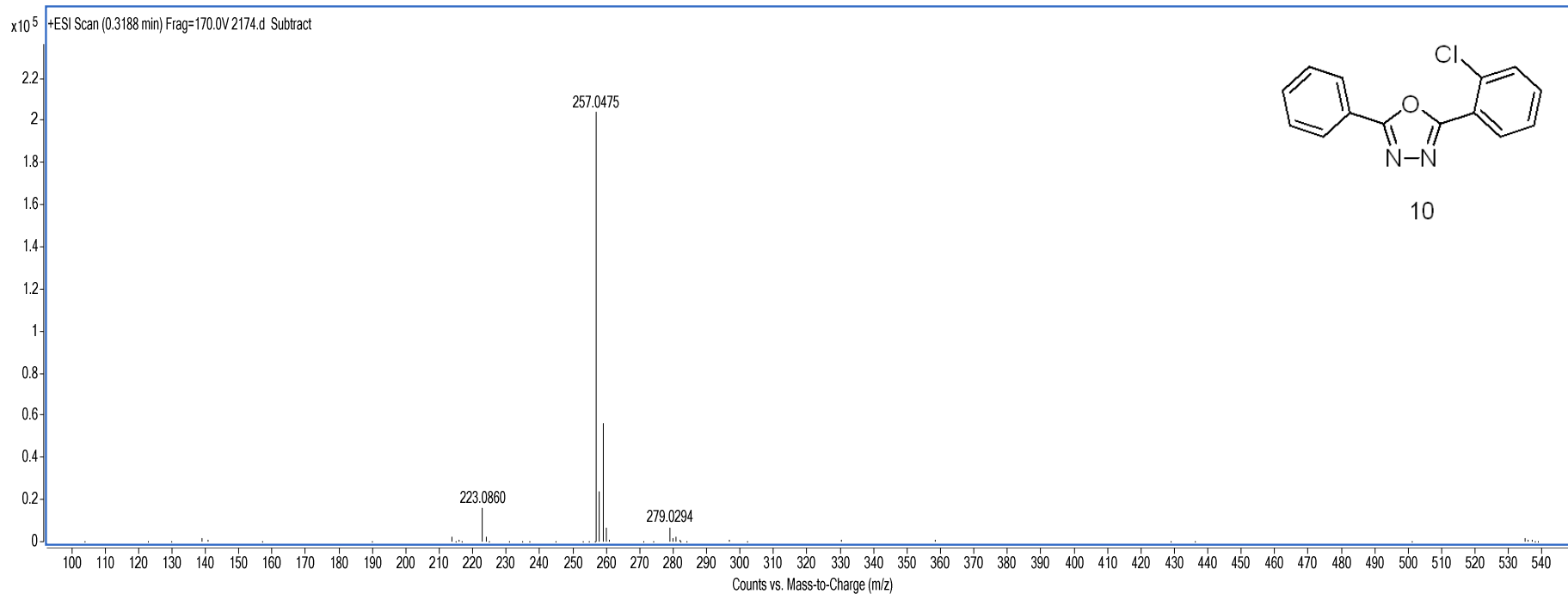




## Qualitative Analysis Report

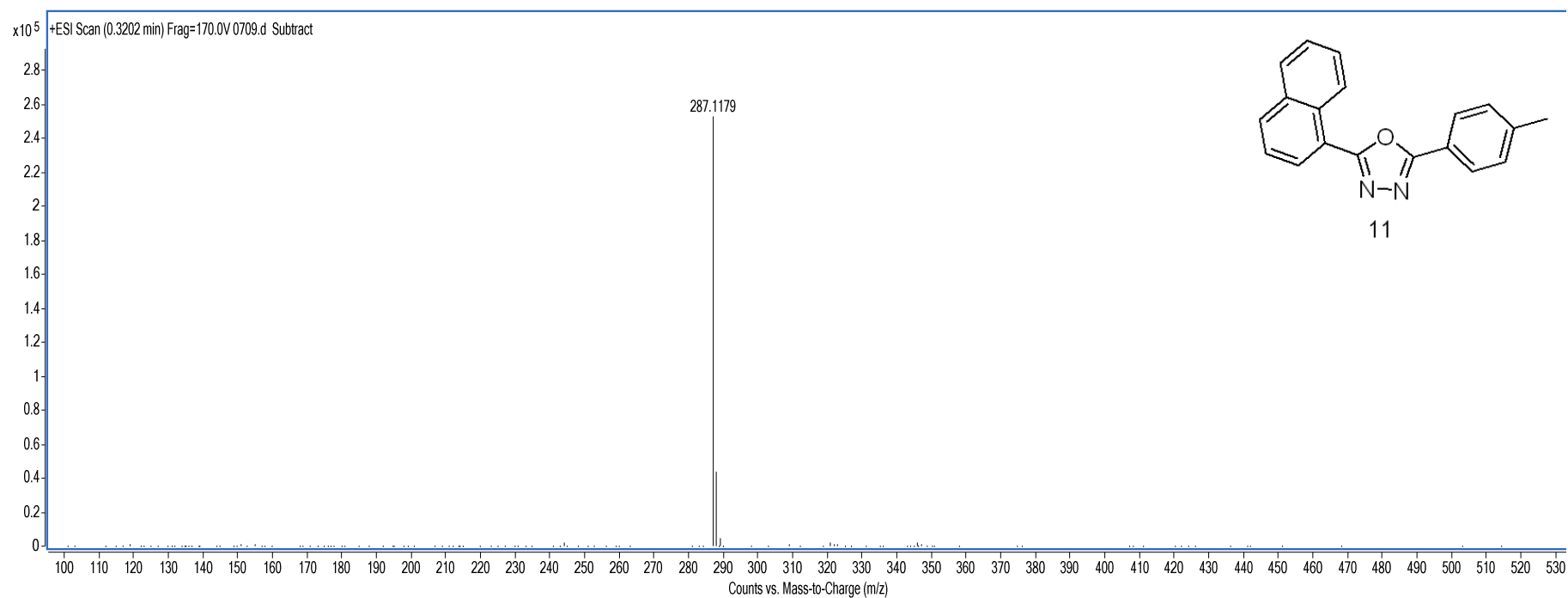
**Data Filename** 2174.d  
**Instrument Name** TOF G6230A  
**Acq Method** YCL.M  
**IRM Calibration Status** Success  
**User Chormatograms**

**Sample Name** HYL5030  
**Acquired Time** 2016-09-19  
**Acquired SW** 6200 series TOF/6500 series



# Qualitative Analysis Report

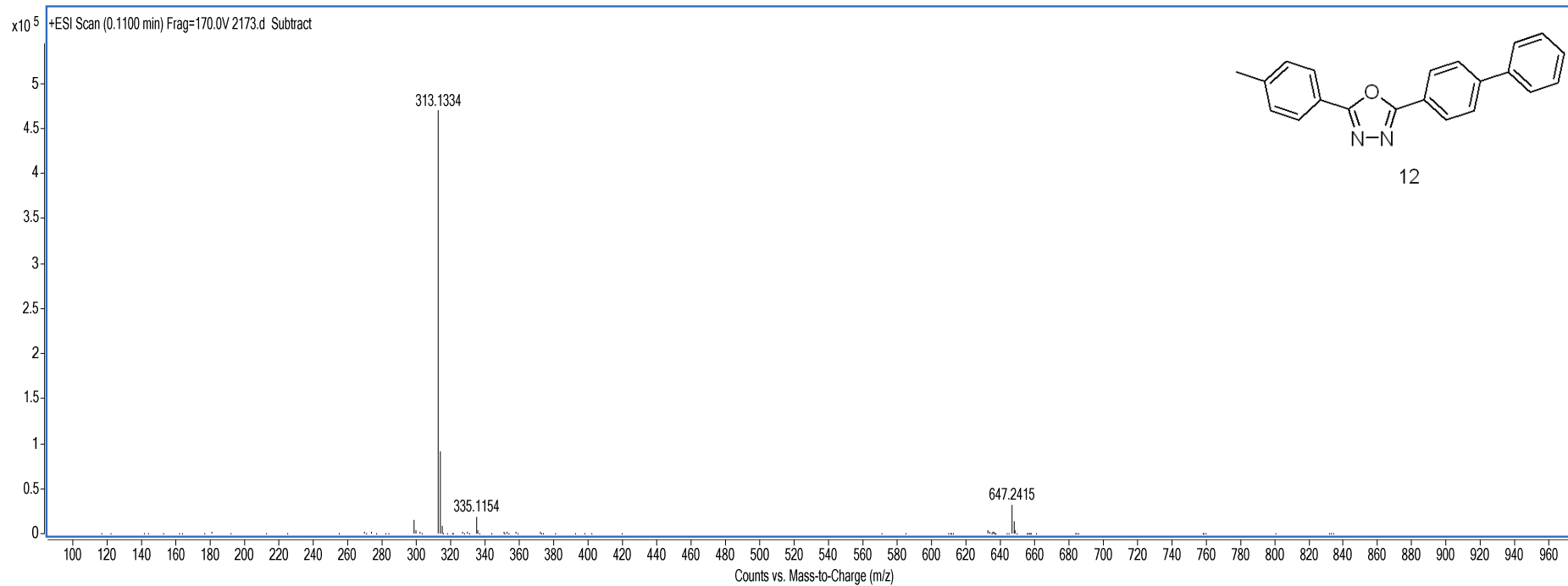
Data Filename	0709.d	Sample Name	WQY6019
Instrument Name	TOF G6230A	Acquired Time	2017-02-17
Acq Method	YCL.M	Acquired SW	6200 series TOF/6500 series
IRM Calibration Status	Success		
User Chormatograms			



## Qualitative Analysis Report

**Data Filename** 2173.d  
**Instrument Name** TOF G6230A  
**Acq Method** YCL.M  
**IRM Calibration Status** Success  
**User Chormatograms**

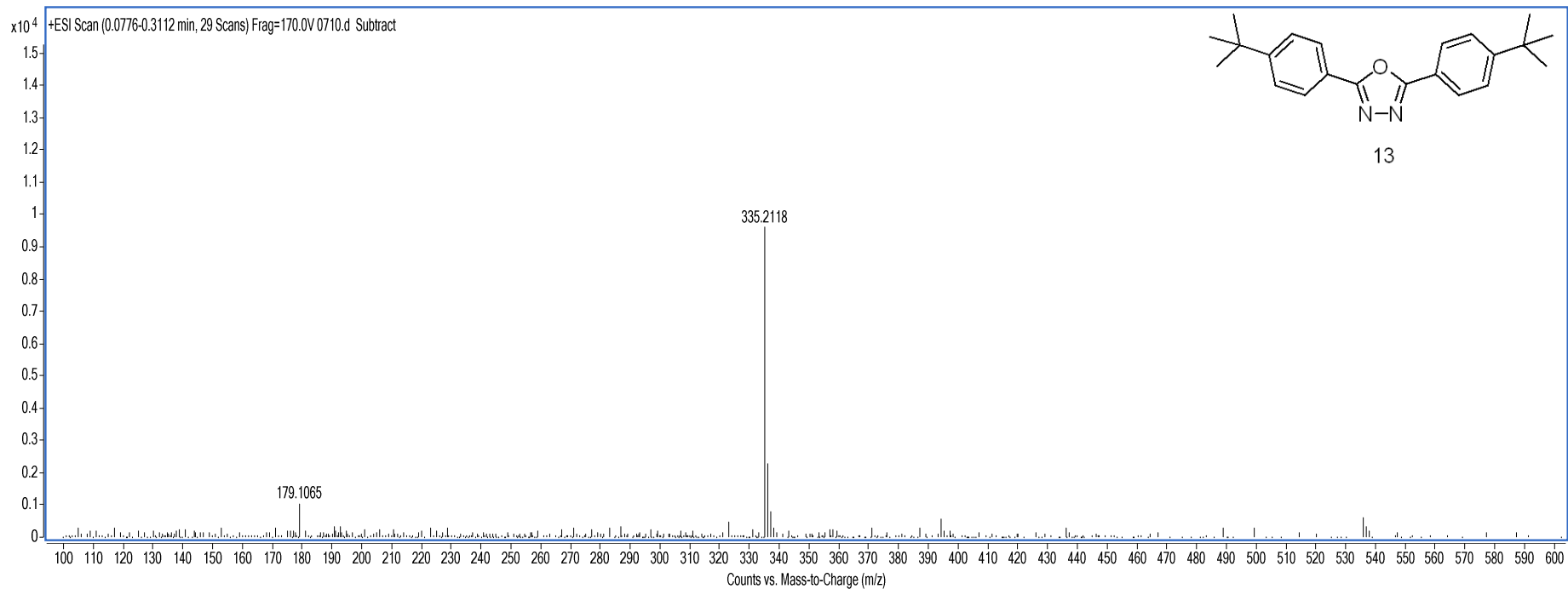
**Sample Name** HYL5027  
**Acquired Time** 2016-09-19  
**Acquired SW** 6200 series TOF/6500 series



## Qualitative Analysis Report

**Data Filename** 0710.d  
**Instrument Name** TOF G6230A  
**Acq Method** YCL.M  
**IRM Calibration Status** Success  
**User Chromatograms**

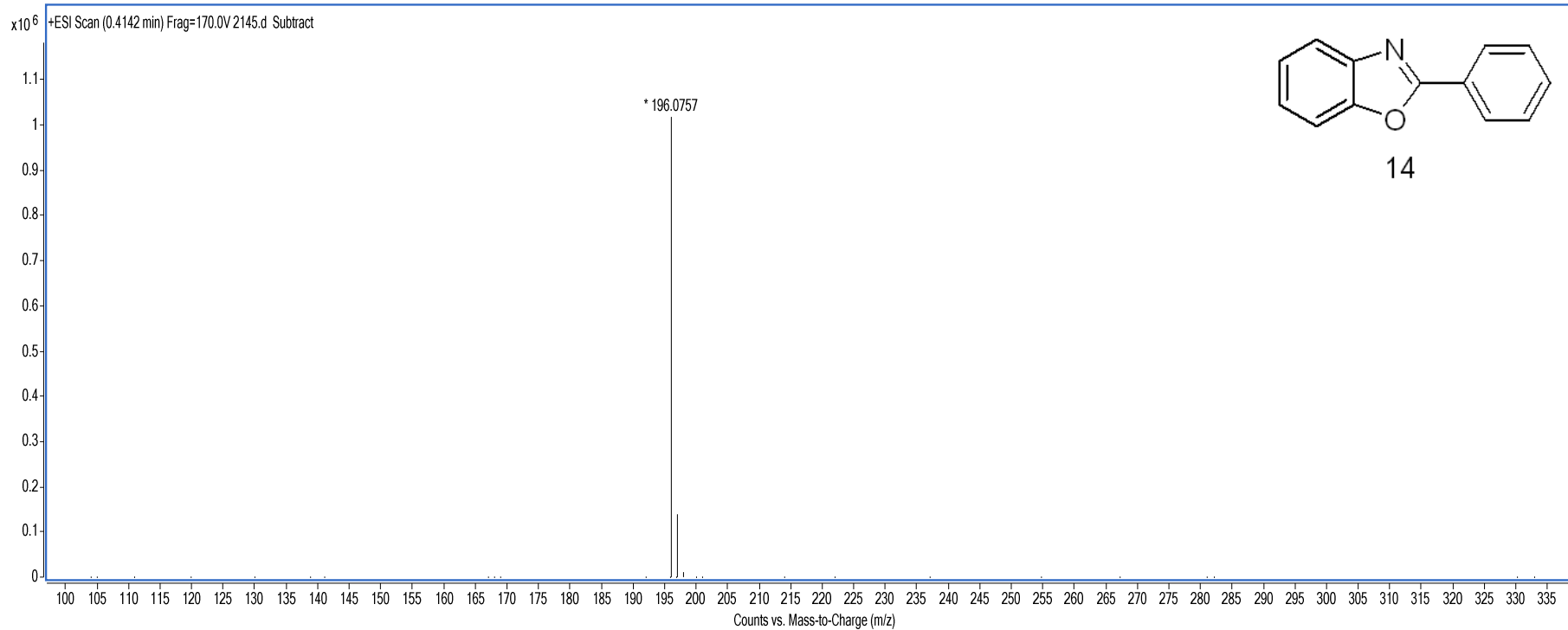
**Sample Name** WQY6020  
**Acquired Time** 2017-02-17  
**Acquired SW** 6200 series TOF/6500 series



## Qualitative Analysis Report

**Data Filename** 2145.d  
**Instrument Name** TOF G6230A  
**Acq Method** YCL.M  
**IRM Calibration Status** Success  
**User Chromatograms**

**Sample Name** HYL6019  
**Acquired Time** 2016-09-14  
**Acquired SW** 6200 series TOF/6500 series

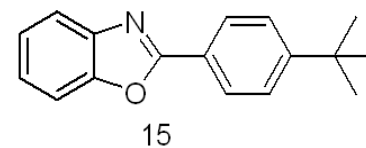
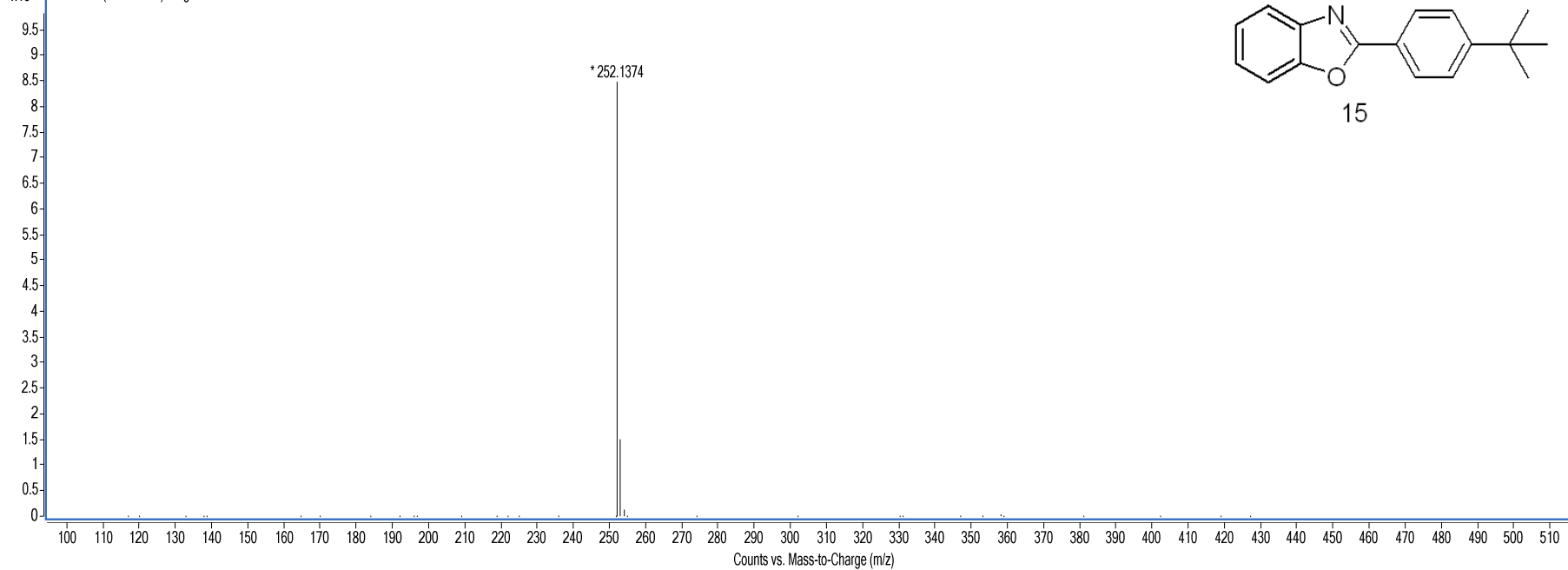


## Qualitative Analysis Report

**Data Filename** 2176.d  
**Instrument Name** TOF G6230A  
**Acq Method** YCL.M  
**IRM Calibration Status** Success  
**User Chormatograms**

**Sample Name** HYL6033  
**Acquired Time** 2016-09-19  
**Acquired SW** 6200 series TOF/6500 series

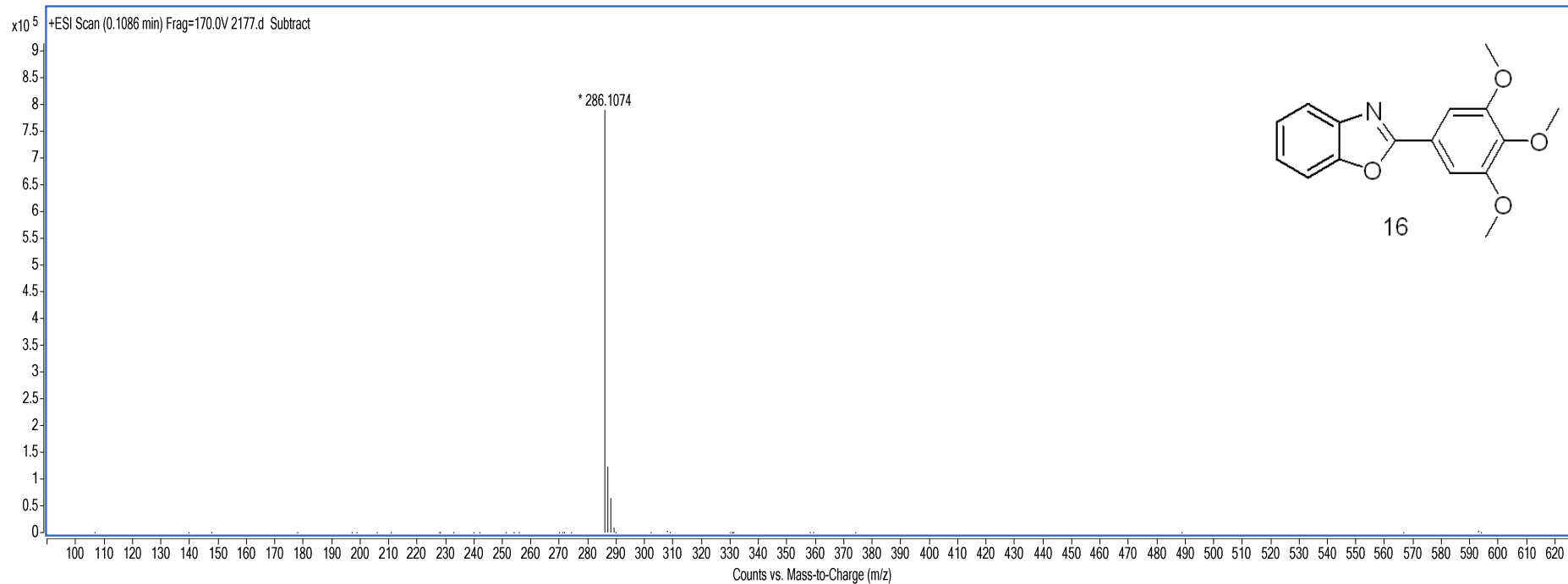
x10<sup>5</sup> +ESI Scan (0.2772 min) Frag=170.0V 2176.d Subtract



## Qualitative Analysis Report

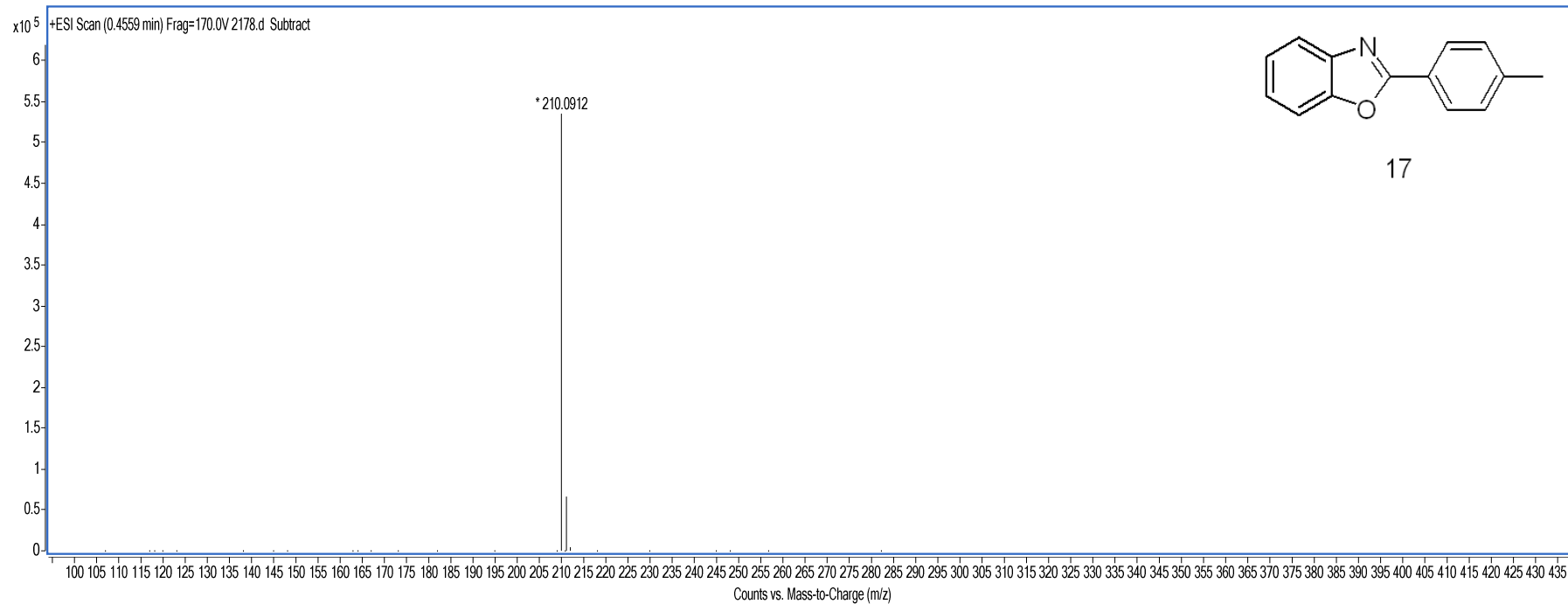
**Data Filename** 2177.d  
**Instrument Name** TOF G6230A  
**Acq Method** YCL.M  
**IRM Calibration Status** Success  
**User Chromatograms**

**Sample Name** HYL6045  
**Acquired Time** 2016-09-19  
**Acquired SW** 6200 series TOF/6500 series



## Qualitative Analysis Report

Data Filename	2178.d	Sample Name	HYL6048
Instrument Name	TOF G6230A	Acquired Time	2016-09-19
Acq Method	YCL.M	Acquired SW	6200 series TOF/6500 series
IRM Calibration Status	Success		
User Chromatograms			

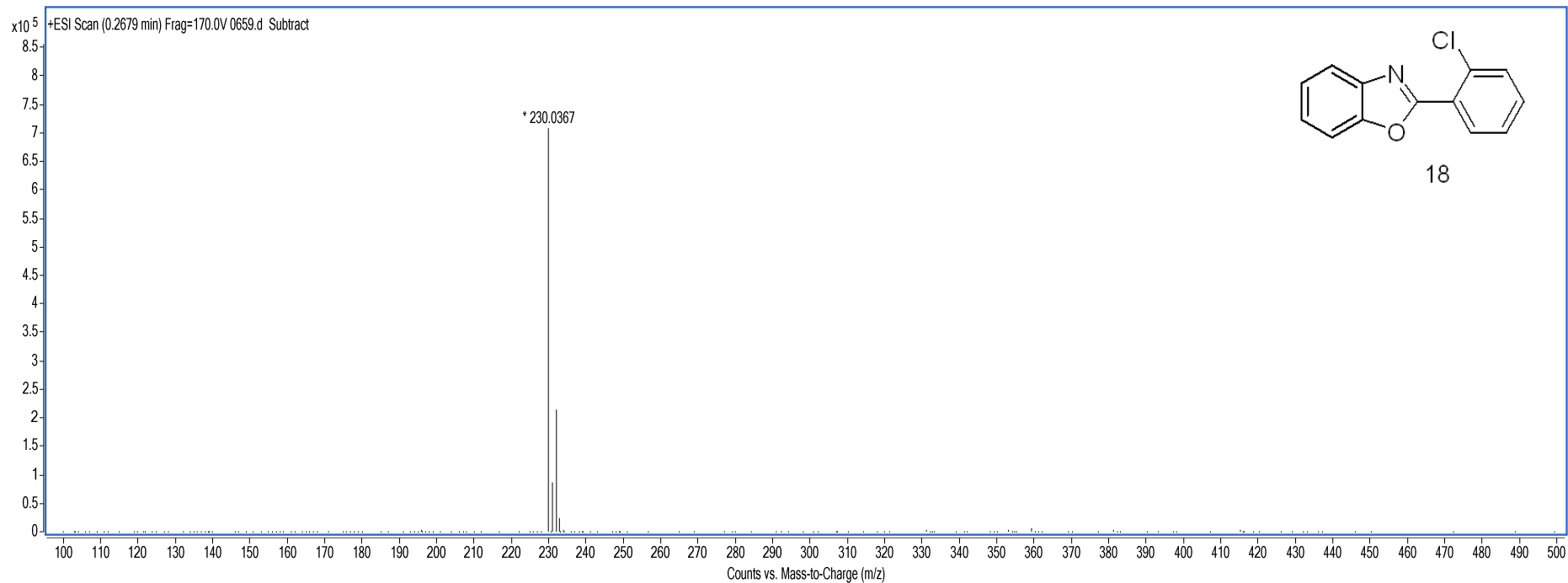




## Qualitative Analysis Report

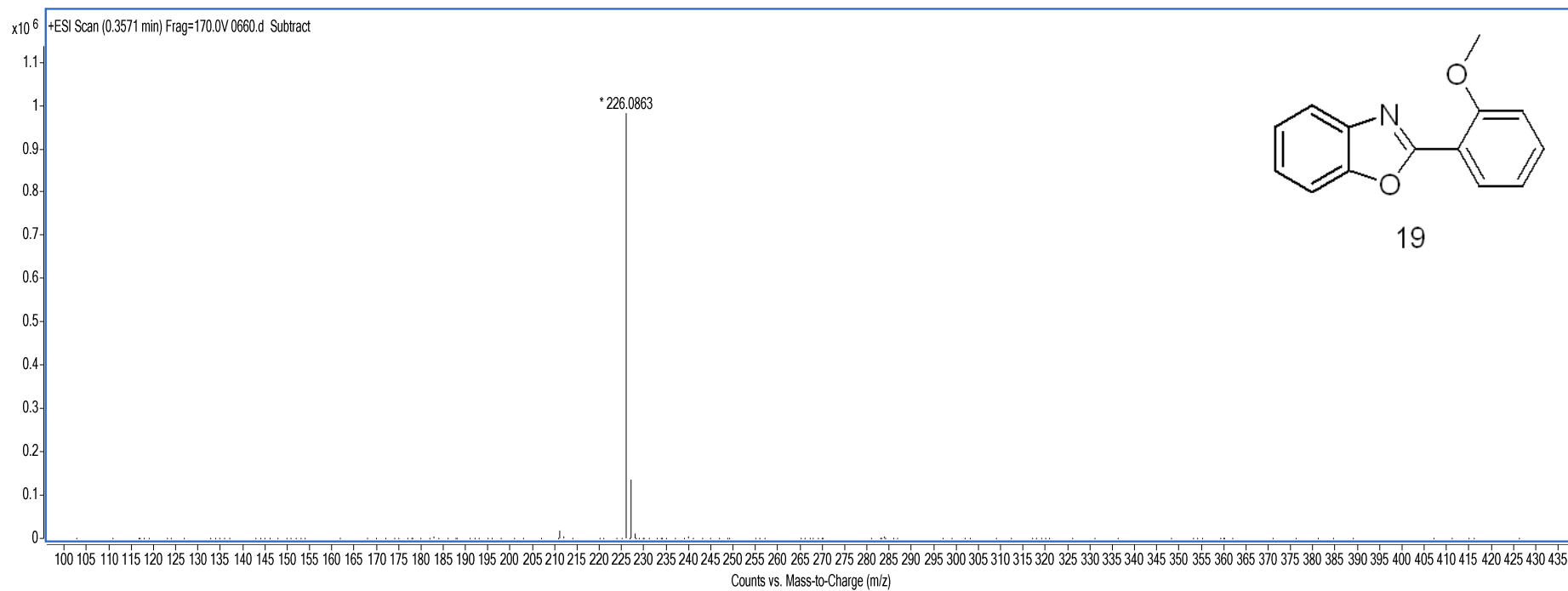
**Data Filename** 0659.d  
**Instrument Name** TOF G6230A  
**Acq Method** YCL.M  
**IRM Calibration Status** Success  
**User Chormatograms**

**Sample Name** HYL8010  
**Acquired Time** 2017-02-10  
**Acquired SW** 6200 series TOF/6500 series



## Qualitative Analysis Report

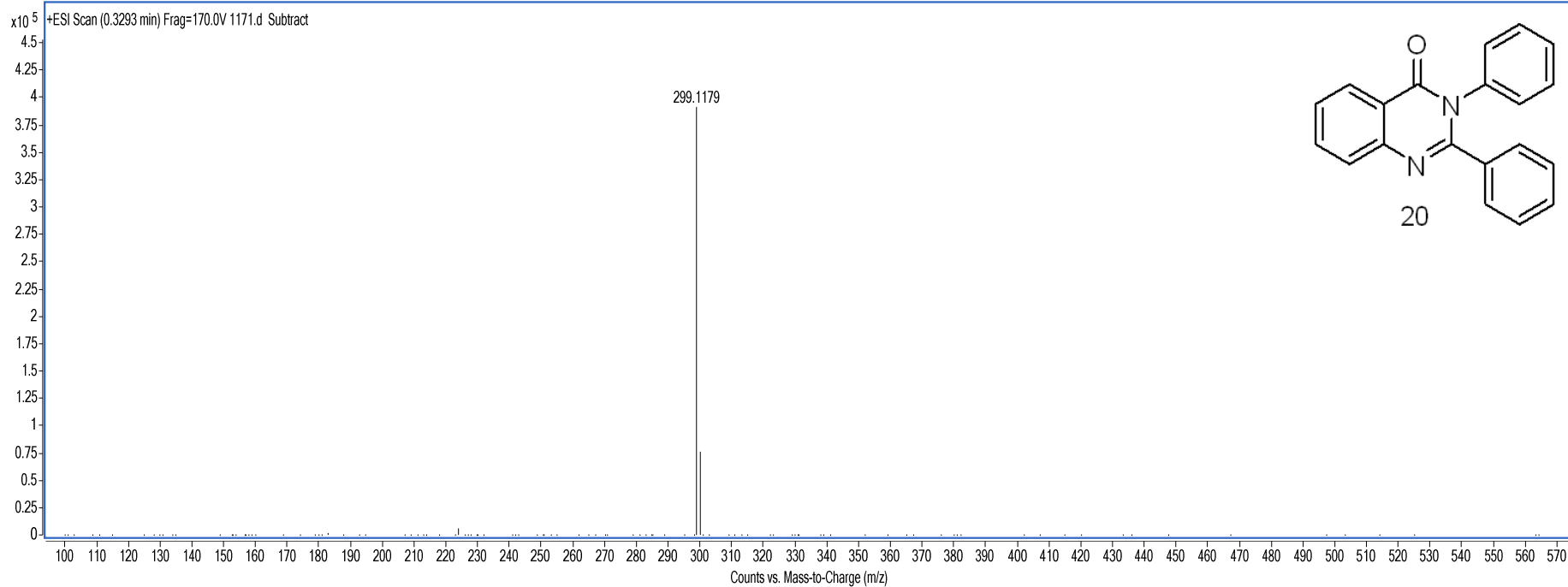
Data Filename	0660.d	Sample Name	HYL8018
Instrument Name	TOF G6230A	Acquired Time	2017-02-10
Acq Method	YCL.M	Acquired SW	6200 series TOF/6500 series
IRM Calibration Status	Success		
User Chormatograms			



## Qualitative Analysis Report

**Data Filename** 1171.d  
**Instrument Name** TOF G6230A  
**Acq Method** YCL.M  
**IRM Calibration Status** Success  
**User Chromatograms**

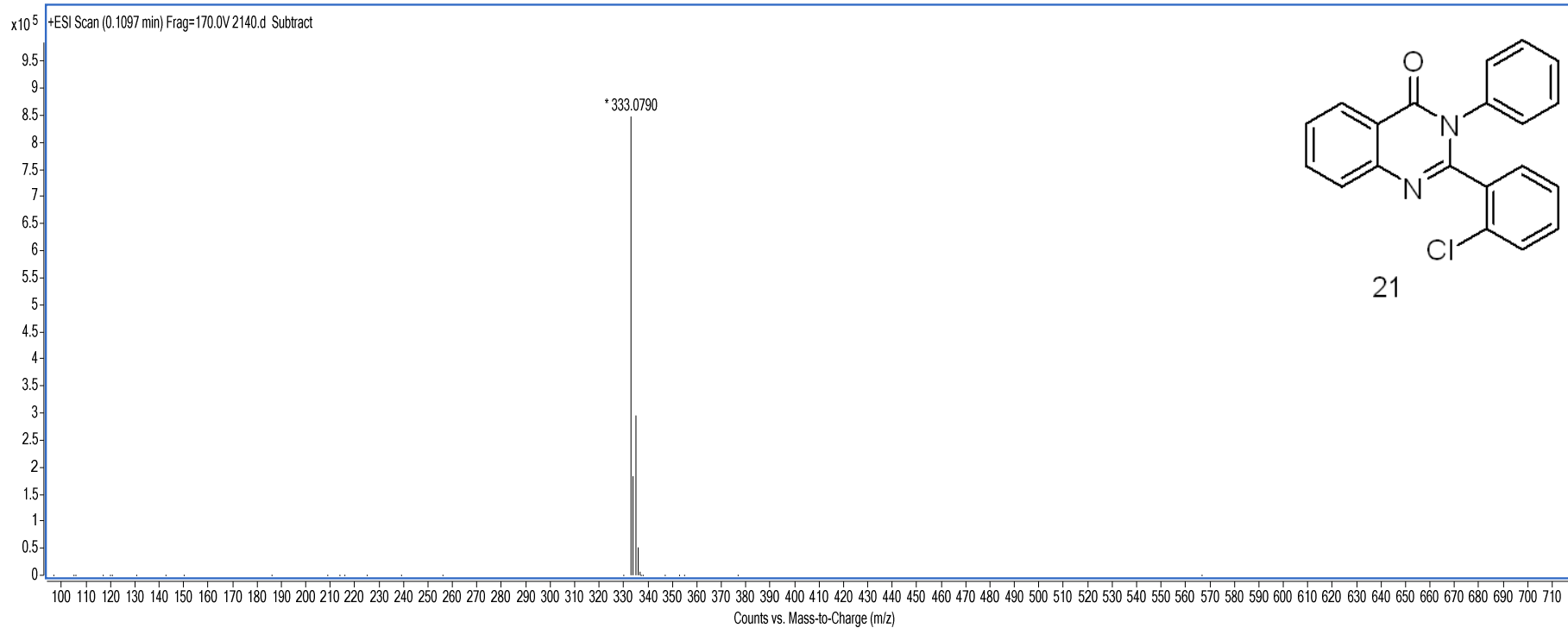
**Sample Name** WJ3048  
**Acquired Time** 2017-03-16  
**Acquired SW** 6200 series TOF/6500 series



## Qualitative Analysis Report

**Data Filename** 2140.d  
**Instrument Name** TOF G6230A  
**Acq Method** YCL.M  
**IRM Calibration Status** Success  
**User Chromatograms**

**Sample Name** HYL6013  
**Acquired Time** 2016-09-14  
**Acquired SW** 6200 series TOF/6500 series

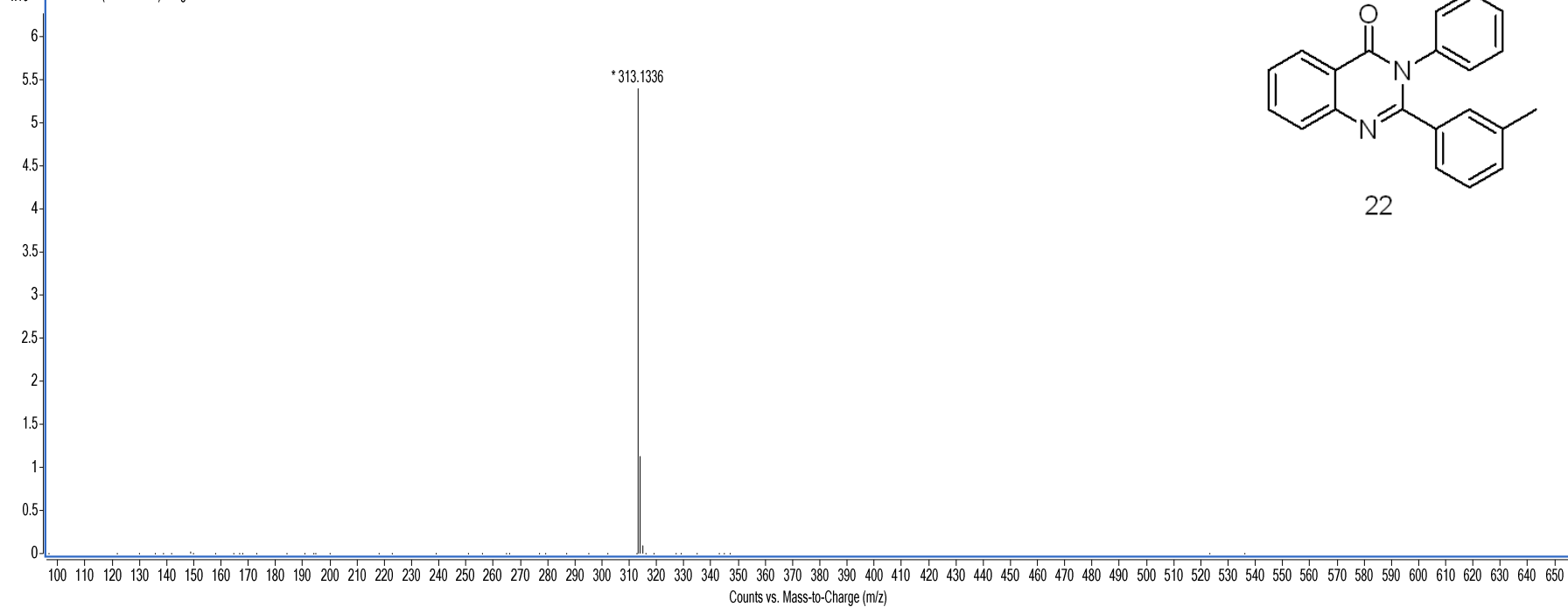


## Qualitative Analysis Report

**Data Filename** 2141.d  
**Instrument Name** TOF G6230A  
**Acq Method** YCL.M  
**IRM Calibration Status** Success  
**User Chromatograms**

**Sample Name** HYL6022  
**Acquired Time** 2016-09-14  
**Acquired SW** 6200 series TOF/6500 series

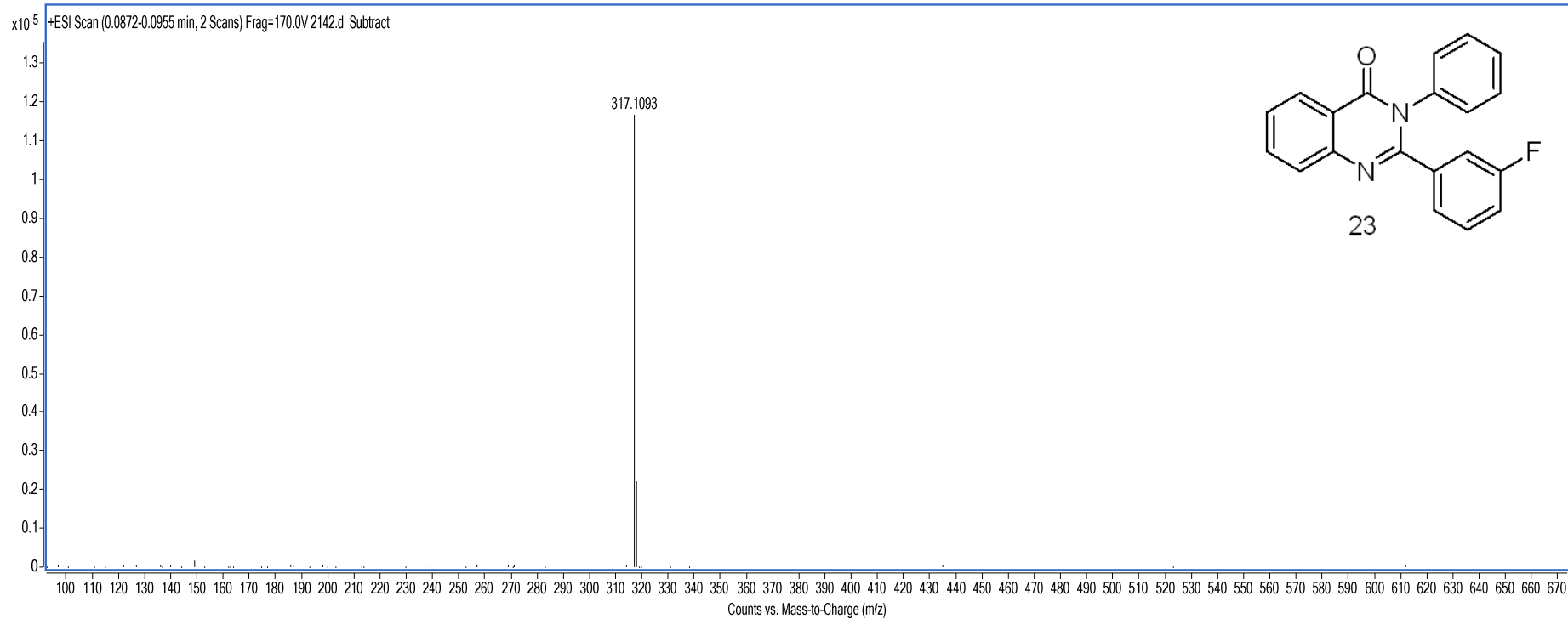
x10<sup>5</sup> +ESI Scan (0.1064 min) Frag=170.0V 2141.d Subtract



## Qualitative Analysis Report

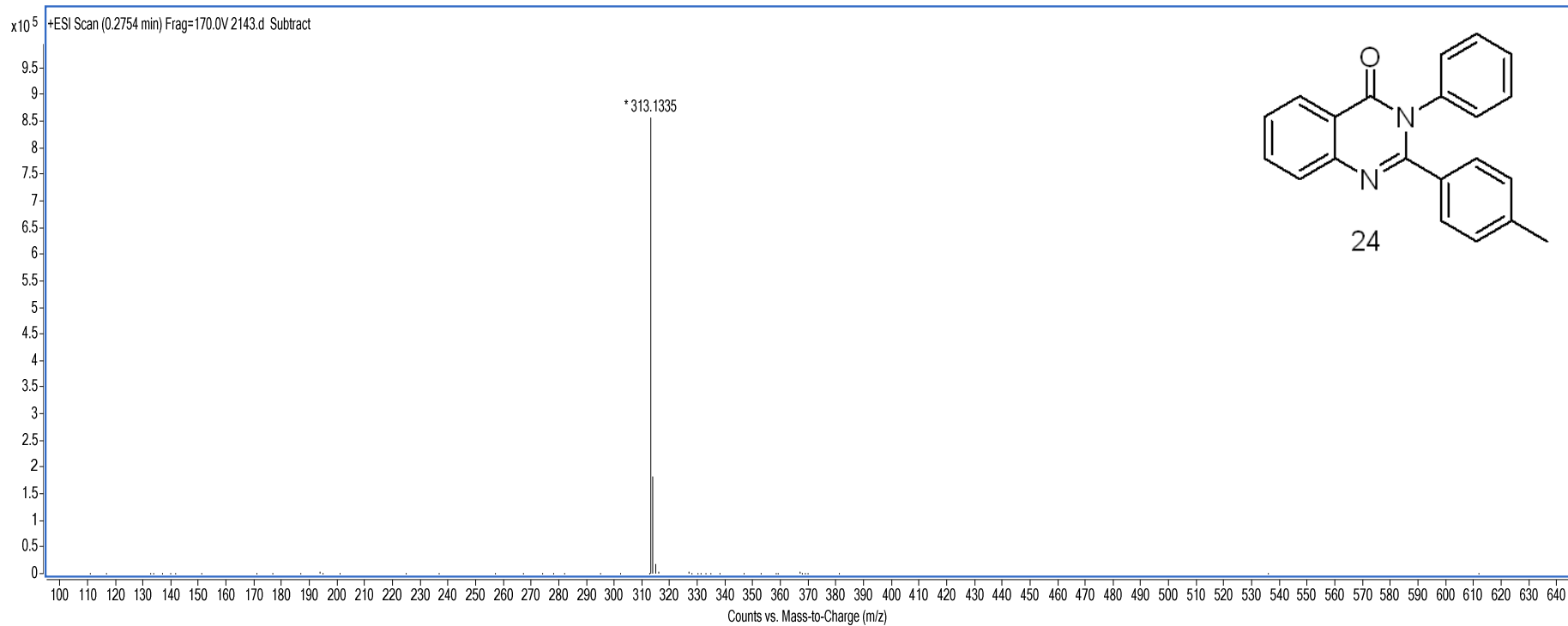
**Data Filename** 2142.d  
**Instrument Name** TOF G6230A  
**Acq Method** YCL.M  
**IRM Calibration Status** Success  
**User Chromatograms**

**Sample Name** HYL6023  
**Acquired Time** 2016-09-14  
**Acquired SW** 6200 series TOF/6500 series



## Qualitative Analysis Report

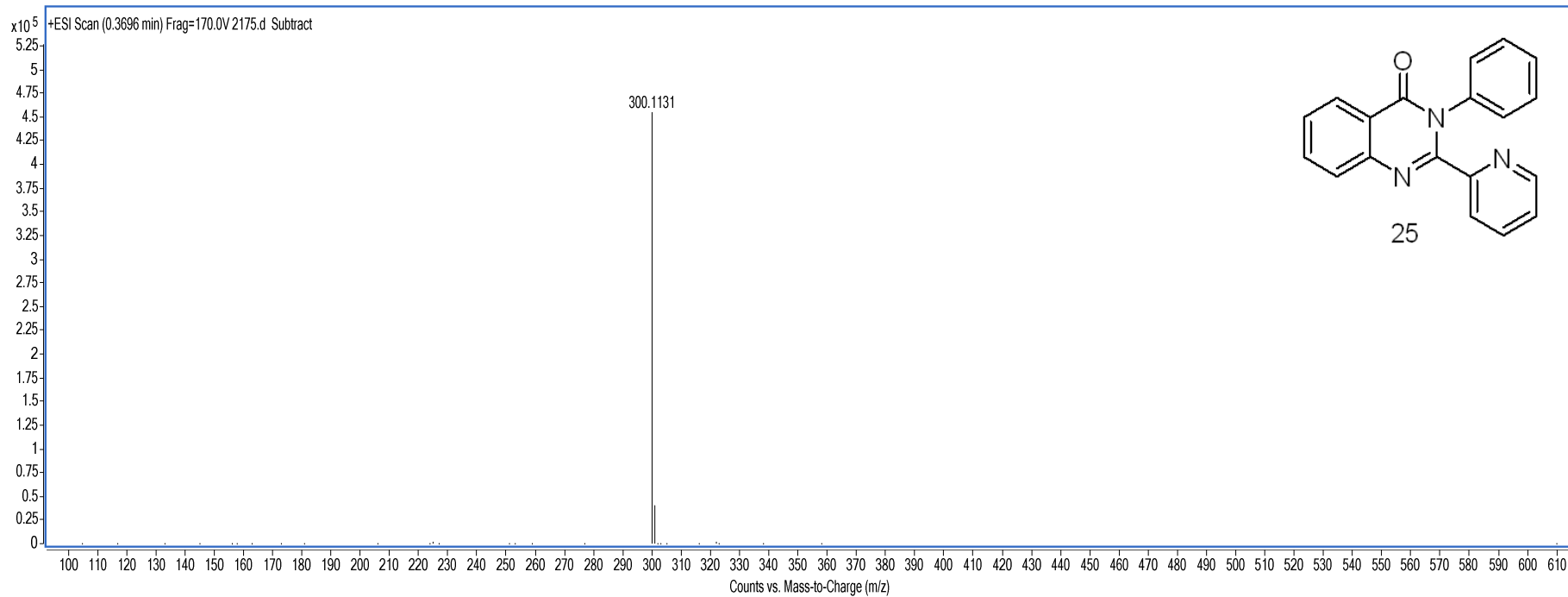
Data Filename	2143.d	Sample Name	HYL6024
Instrument Name	TOF G6230A	Acquired Time	2016-09-14
Acq Method	YCL.M	Acquired SW	6200 series TOF/6500 series
IRM Calibration Status	Success		
User Chromatograms			



## Qualitative Analysis Report

**Data Filename** 2175.d  
**Instrument Name** TOF G6230A  
**Acq Method** YCL.M  
**IRM Calibration Status** Success  
**User Chromatograms**

**Sample Name** HYL6026  
**Acquired Time** 2016-09-19  
**Acquired SW** 6200 series TOF/6500 series



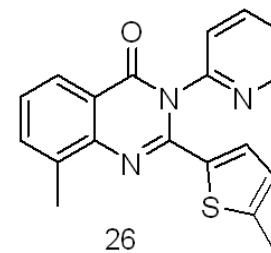
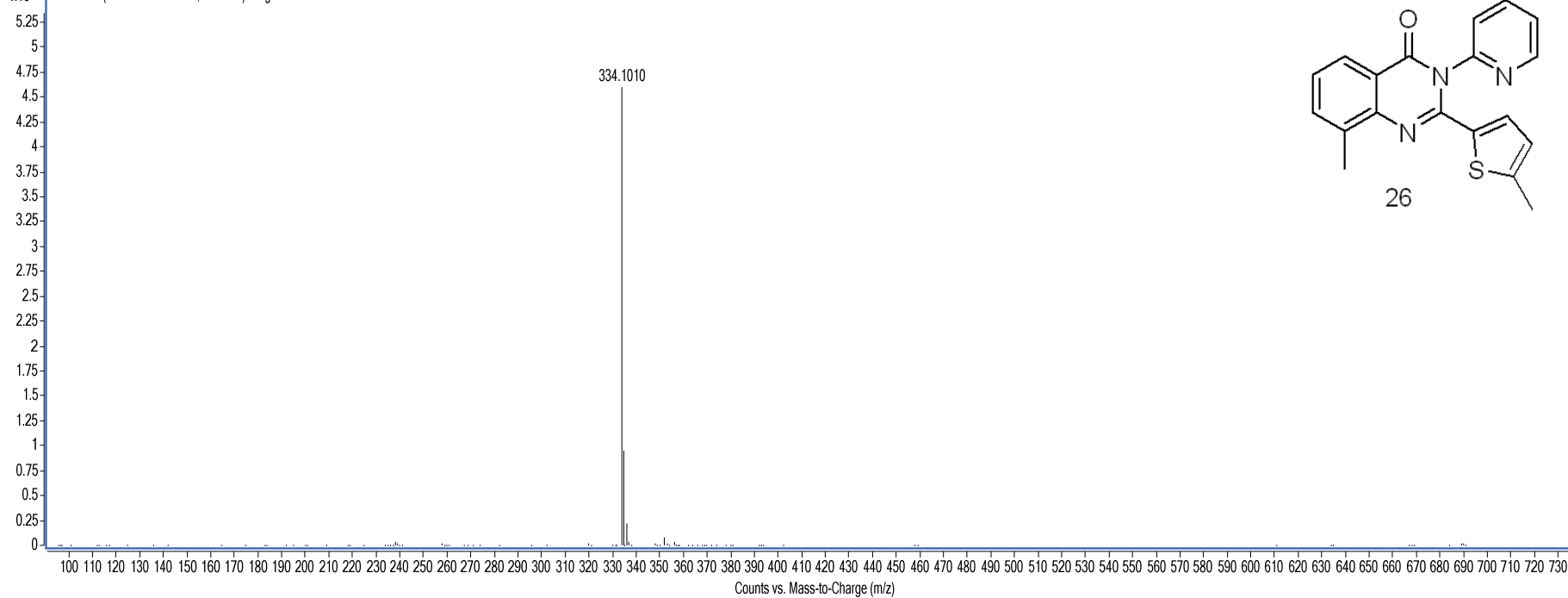


## Qualitative Analysis Report

**Data Filename** 2144.d  
**Instrument Name** TOF G6230A  
**Acq Method** YCL.M  
**IRM Calibration Status** Success  
**User Chromatograms**

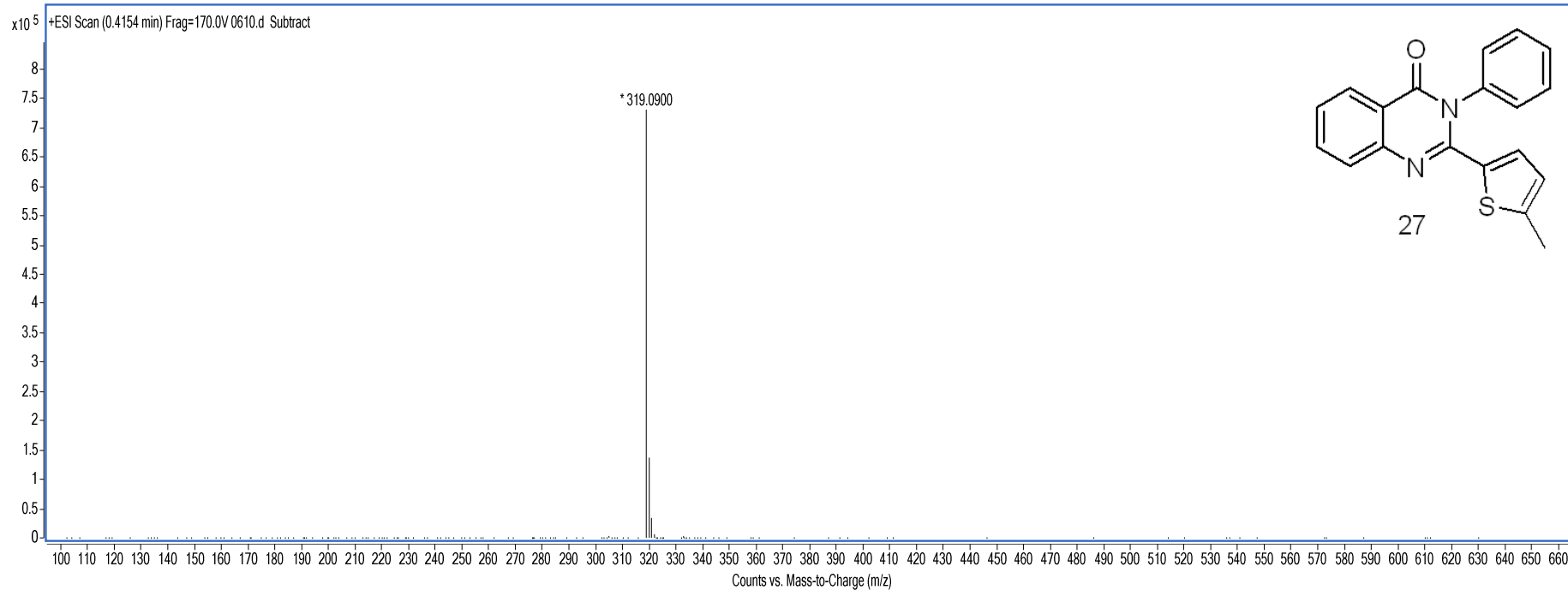
**Sample Name** HYL6031  
**Acquired Time** 2016-09-14  
**Acquired SW** 6200 series TOF/6500 series

x10<sup>5</sup> +ESI Scan (0.1031-0.1115 min, 2 Scans) Frag=170.0V 2144.d Subtract



# Qualitative Analysis Report

Data Filename	0610.d	Sample Name	WJ2004
Instrument Name	TOF G6230A	Acquired Time	2017-02-08
Acq Method	YCL.M	Acquired SW	6200 series TOF/6500 series
IRM Calibration Status	Success		
User Chormatograms			



## Qualitative Analysis Report

Data Filename	0611.d	Sample Name	WJ2005
Instrument Name	TOF G6230A	Acquired Time	2017-02-08
Acq Method	YCL.M	Acquired SW	6200 series TOF/6500 series
IRM Calibration Status	Success		
User Chromatograms			

