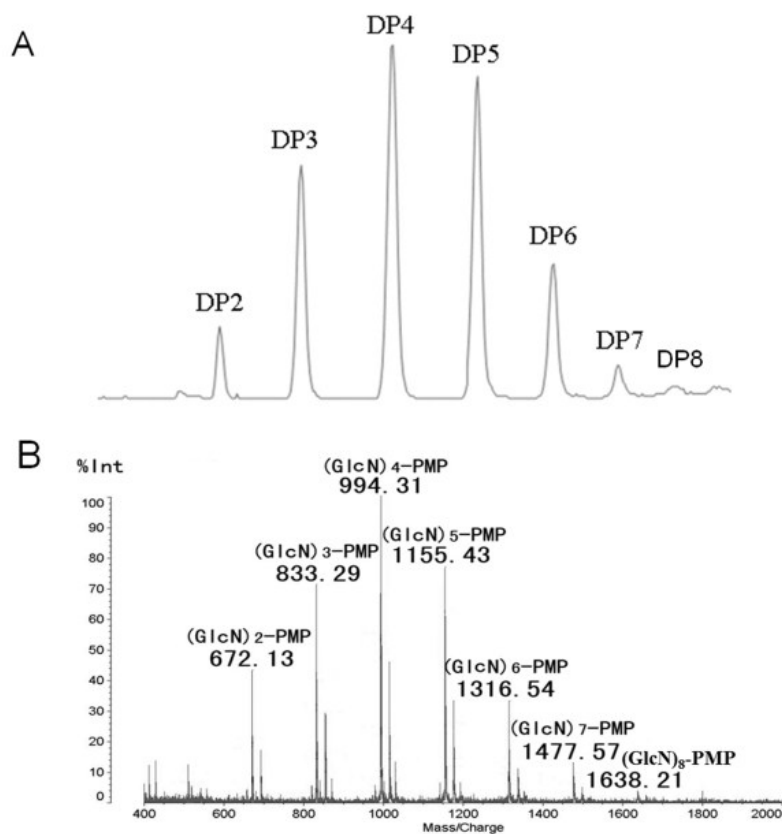


**Figure S1. The high-performance liquid chromatography (HPLC) (A) and time-of-flight mass spectrometer (TOF-MS) analysis (B) of chitosan oligosaccharide.**



**Figure S2. The nuclear magnetic resonance (NMR) analysis of chitosan**

oligosaccharide. (A)  $^{13}\text{C}$  NMR spectra; (B)  $^1\text{H}$  NMR spectra.

