

Supporting Information

Different-sized black phosphorus nanosheets with good cytocompatibility and high photothermal performance

Haidi Fu,^{a,b} Zhibin Li,^{b,c} Hanhan Xie,^b Zhengbo Sun,^b Beike Wang,^a Hao Huang,^b Guangli Han,^{a,*} Huaiyu Wang,^b Paul K. Chu^c & Xue-Feng Yu^b

^a *State Key Laboratory Breeding Base of Basic Science of Stomatology (Hubei-MOST) and Key Laboratory for Oral Biomedicine of Ministry of Education (KLOBM), School and Hospital of Stomatology, Wuhan University, 237 Luoyu Road, Wuhan 430079, P. R. China.*

^b *Institute of Biomedicine and Biotechnology, Shenzhen Institutes of Advanced Technology, Chinese Academy of Sciences, Shenzhen 518055, P. R. China.*

^c *Department of Physics and Materials Science, City University of Hong Kong, Tat Chee Avenue, Kowloon, Hong Kong, P.R. China.*

* Correspondence and requests for materials should be addressed to G.L.H (email: guanglihan@hotmail.com)

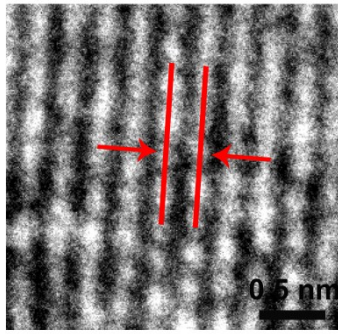


Figure S1. HRTEM image of BP nanosheets.

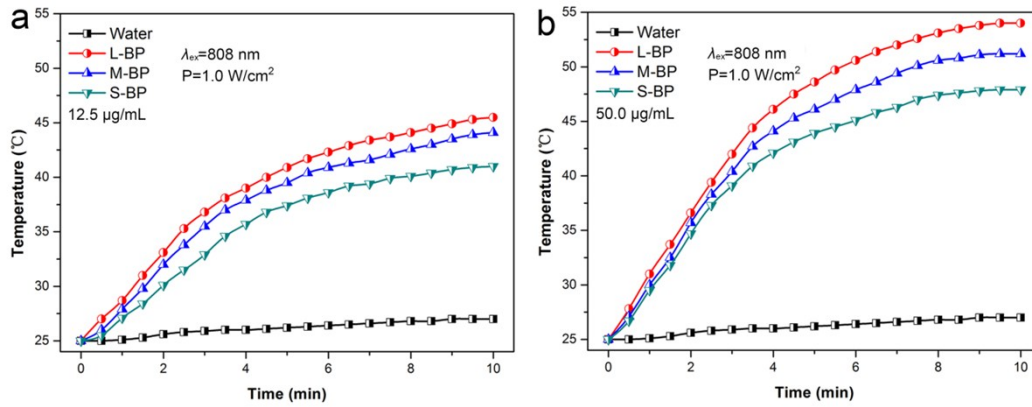


Figure S2. Photothermal heating curves of distilled water and the L-BP, M-BP, S-BP water suspension at different concentrations (12.5 and 50.0 µg/mL) irradiated with an 808 nm laser (1.0 W/cm²). (a) 12.5 µg/mL. (b) 50.0 µg/mL.

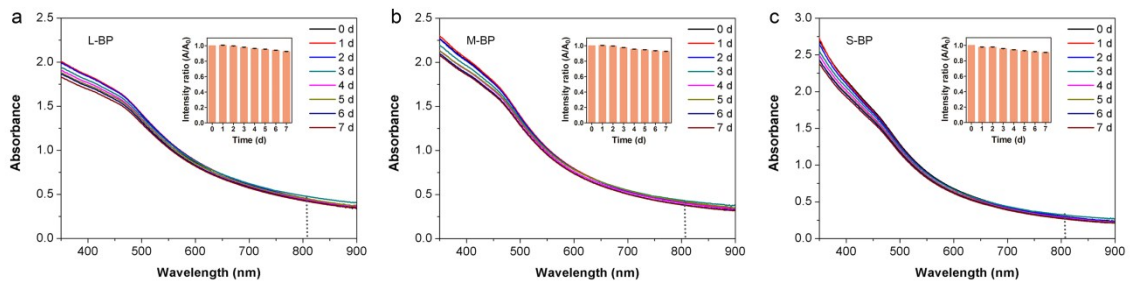


Figure S3. Absorbance spectra of L-BP (a), M-BP (b), S-BP (c) stored in DMSO for up to 7 days. Insets: Absorption ratios (A/A_0) at 808 nm.

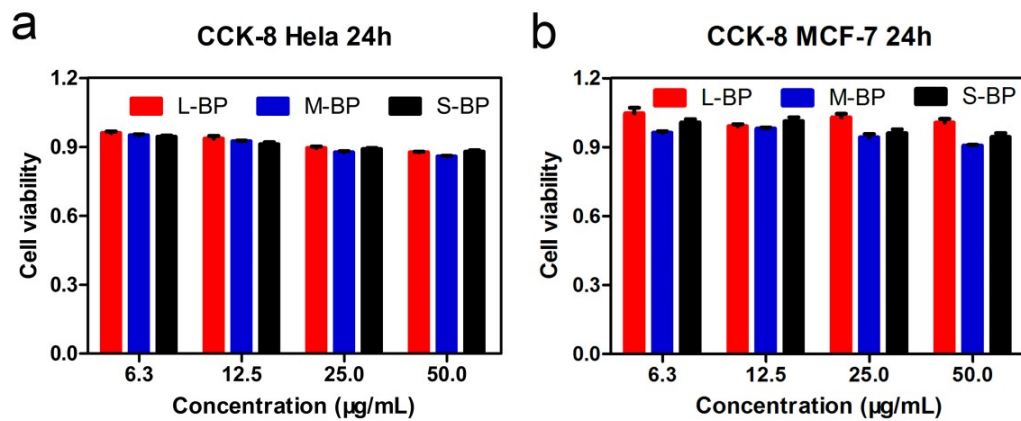


Figure S4. CCK-8 assays of (a) HeLa cells, and (b) MCF-7 cells before and after the incubation with the three BP nanosheets for 24 h at different concentrations (6.3, 12.5, 25.0 and 50.0 µg/mL). The data are represented as means \pm standard deviation. Almost no cytotoxicity can be observed for the two types of cells even at a high concentration of 50.0 µg/mL.