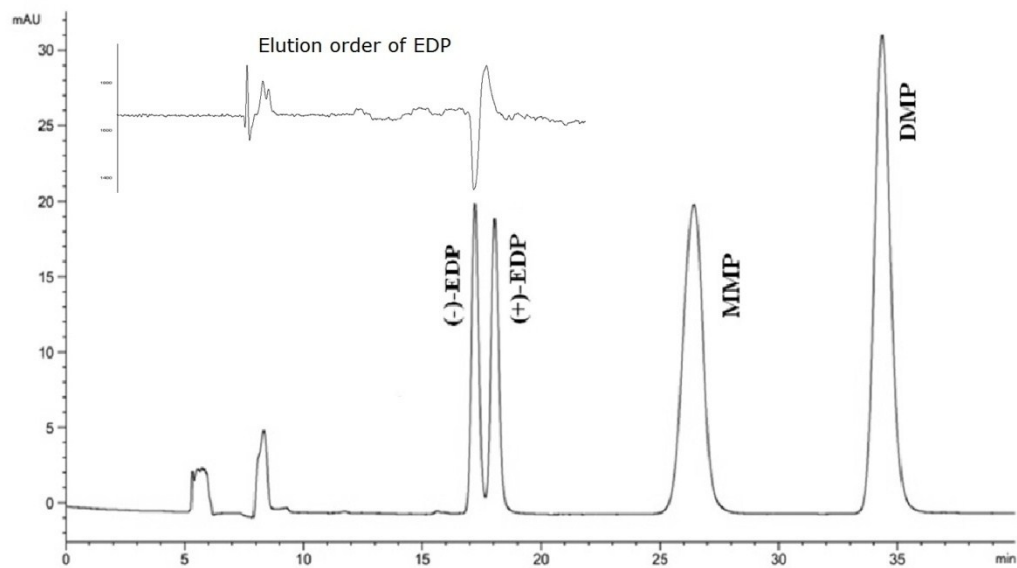


**Figs. S1.** Chromatographic separation and elution orders of EDP and its metabolites on Chiralpak IC. The inset represents the ORD signal.



**Table. S1.** Stereoselective separations of EDP on Chiralpak IC with *n*-hexane/2-propanol.

content of 2-propanol (%, V/V)	2	5	10	15	20
Rs	2.36	1.91	1.56	1.33	1.18
$\alpha$	1.10	1.09	1.08	1.07	1.07

**Table. S2.** Effect of temperature on the enantiomeric separation of EDP.

<b>Temperature</b> °C	<b>k<sub>1</sub></b>	<b>k<sub>2</sub></b>	<b><math>\alpha</math></b>	<b>Rs</b>
5	3.05	3.34	1.10	1.58
10	2.83	3.09	1.09	2.32
15	2.57	2.78	1.08	2.86
20	2.37	2.55	1.08	3.01
25	2.16	2.31	1.07	2.75
30	1.99	2.11	1.06	2.55

**Table. S3.** Summary of average recovery of (+)-OD-PABA, (-)-OD-PABA, 4-DBA and 4-MBA.

Analytes	Spiked level (mg/kg)	(+)-OD-PABA	(-)-OD-PABA	4-DBA	4-MBA
Plasma	0.5	85.2±7.3	86.1±7.7	104.2±2.1	102.8±4.8
	5	92.1±5.2	94.5±3.0	99.6±4.4	95.4±4.6
	50	98.2±5.2	98.9±6.9	91.5±7.4	88.7±6.2
10% plasma solution	0.5	87.1±6.3	97.4±7.8	100.5±4.3	95.3±4.9
	5	89.9±4.2	90.8±6.6	103.0±5.7	97.1±3.5
	50	93.5±5.4	96.2±2.1	98.8±3.3	97.2±2.9
Microsome solution	0.5	84.7±7.6	82.3±5.2	100.9±2.1	99.7±5.7
	5	85.1±6.4	99.3±3.9	85.9±7.1	102.5±6.3
	50	108.5±5.3	96.8±4.9	95.3±6.2	100.6±2.6
Brain	0.5	85.2±2.6	86.9±8.3	108.6±4.8	104.1±7.6
	5	98.9±6.7	106.6±9.8	95.8±10.6	95.7±3.2
	50	97.2±2.5	81.6±11.0	82.9±12.8	83.7±3.2
Kidney	0.5	95.2±2.8	94.7±4.8	81.3±8.8	104.6±4.4
	5	98.2±2.5	95.0±10.2	103.7±8.7	81.5±8.4
	50	98.4±10.7	90.2±8.8	86.6±9.9	103.8±12.0
Lung	0.5	100.0±3.0	101.2±4.8	97.6±5.3	97.4±6.4
	5	100.3±5.7	97.7±11.1	103.7±2.7	94.1±4.6
	50	90.1±8.2	84.3±4.7	99.8±9.1	105.6±11.8
Liver	0.5	85.0±5.1	105.0±3.7	93.9±6.8	90.9±2.4
	5	89.5±11.2	102.3±5.3	81.5±8.3	102.3±6.9
	50	104.7±5.5	91.2±9.9	102.7±6.7	84.9±8.1
Urine	0.5	87.7±9.7	96.4±5.6	93.7±5.3	91.1±12.3
	5	86.5±11.1	85.6±3.5	96.9±9.6	93.4±11.6
	50	89.4±7.0	86.3±5.3	107.1±10.8	98.8±6.3
Feces	0.5	103.4±2.0	105.6±11.9	99.6±11.4	84.4±11.9
	5	84.5±10.7	95.7±2.9	95.4±9.4	102.1±5.1
	50	82.7±6.3	105.4±12.2	101.3±6.3	88.3±2.0

**Table. S4.** The concentration of EDP, DMP and MMP in rabbit brain, kidney, lung and liver at 3 h.

<b>Tissues</b>	<b>C(mg kg<sup>-1</sup>)/3 h</b>		
	<b>EDP</b>	<b>DMP</b>	<b>MMP</b>
<b>brain</b>	ND	ND	ND
<b>kidney</b>	ND	0.72±0.28	ND
<b>lung</b>	ND	ND	ND
<b>liver</b>	ND	1.08±0.34	ND

**Table.S5.** Excretion rate of EDP, DMP and MMP by urine and feces.

<b>Excreta</b>	<b>EDP</b>	<b>DMP</b>	<b>MMP</b>
<b>Urine</b>	ND	1.39%±0.10%	0.28%±0.09%
<b>Feces</b>	ND	0.05%±0.01%	0.07%±0.05%

