

Preparation of magnetic mesoporous carbon from polystyrene-grafted magnetic nanoparticles for rapid extraction of chlorophenols from water samples

Shan Xue, Chaozhan Wang*, Yinmao Wei

*Synthetic and Natural Functional Molecule Chemistry of Ministry of Education Key Laboratory,
College of Chemistry and Materials Science, Northwest University, Xi'an 710127, Shannxi, China*

* Corresponding authors: Prof. Chaozhan Wang, College of Chemistry and Materials Science,
Northwest University, 1 Xue Fu Avenue, Changan District, Xi'an 710127, P R China. Tel/Fax:
+86-29-81535026, Email: czwang@nwu.edu.cn (C. Wang)

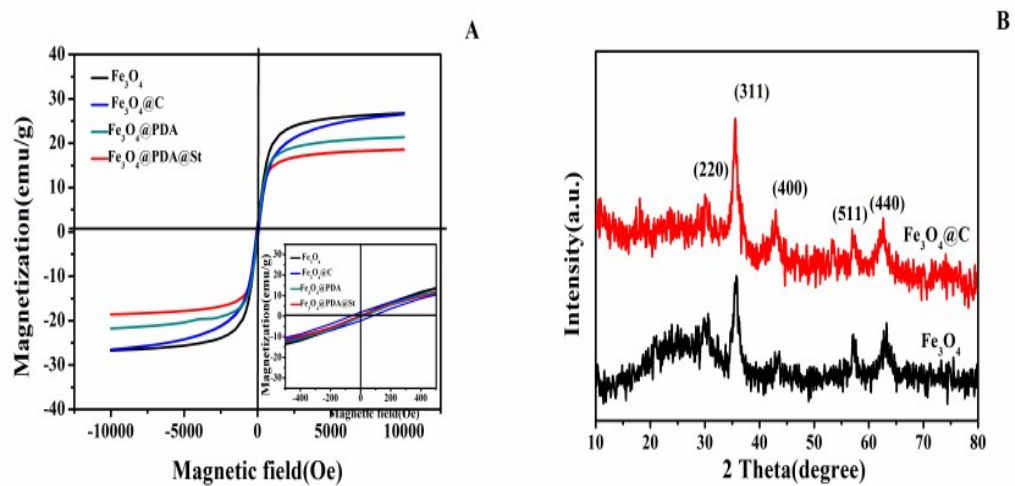


Fig.S1. Magnetization curves of Fe_3O_4 , $\text{Fe}_3\text{O}_4@\text{PDA}$, $\text{Fe}_3\text{O}_4@\text{PDA}@St$ and $\text{Fe}_3\text{O}_4@\text{C}$ (A) and XRD patterns of Fe_3O_4 and $\text{Fe}_3\text{O}_4@\text{C}$ (B).

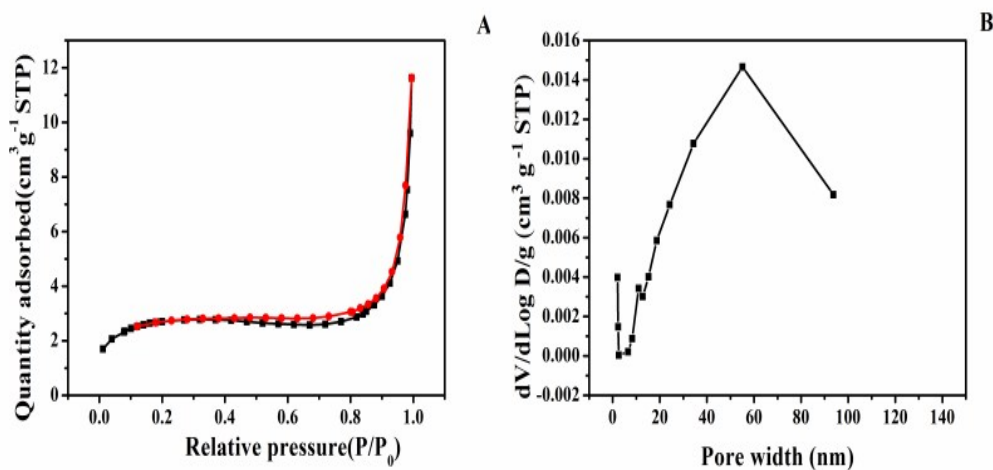


Fig.S2. N_2 adsorption-desorption (A) and pore size distribution (B) of $\text{Fe}_3\text{O}_4@\text{C}$.

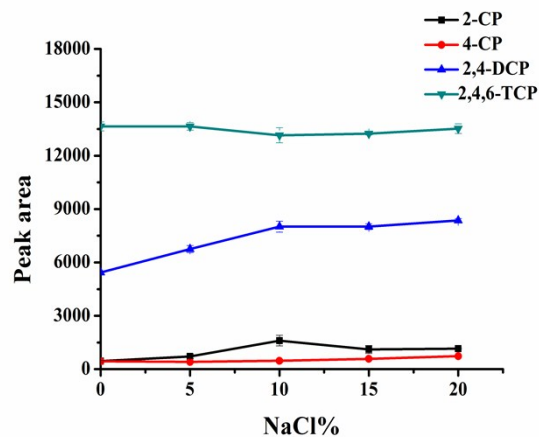


Fig.S3. Effect of salt concentration on the extraction of CPs. CPs concentrations are all at 1.0 $\mu\text{g/mL}$. pH values, 5; Sample volume, 10 mL; amount of adsorbent, 5 mg; elution solution, 1 mL alkaline methanol; extraction time, 30 min; desorption time, 30 min.

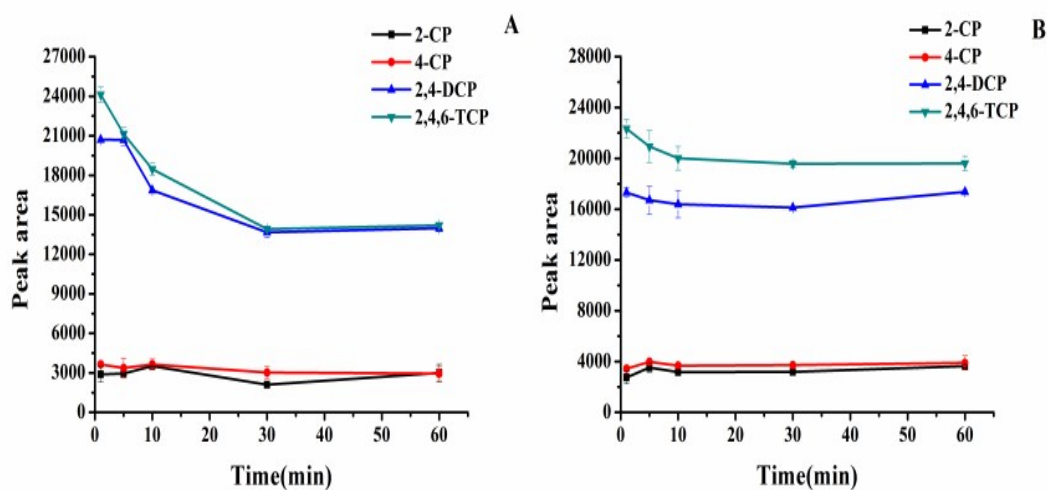


Fig.S4. Effect of extraction time (A) and desorption time (B) on the extraction of CPs. CPs concentrations are all at 1.0 $\mu\text{g/mL}$. Salt concentration, 10% (m/v); pH values, 5; Sample volume, 10 mL; amount of adsorbent, 5 mg; elution solution, 1 mL alkaline methanol.