

Supporting Information

Inkjet printing and rapid ebeam sintering enable
formation of highly conductive patterns in roll to roll
process

Y. Farraj,^a M. Biemann^b and S. Magdassi^a

^aCasali Center of Applied Chemistry, Institute of Chemistry, The Hebrew
University of Jerusalem, Jerusalem, 91904, Israel

^bebeam Technologies, COMET Group, Flamatt, 3175, Switzerland

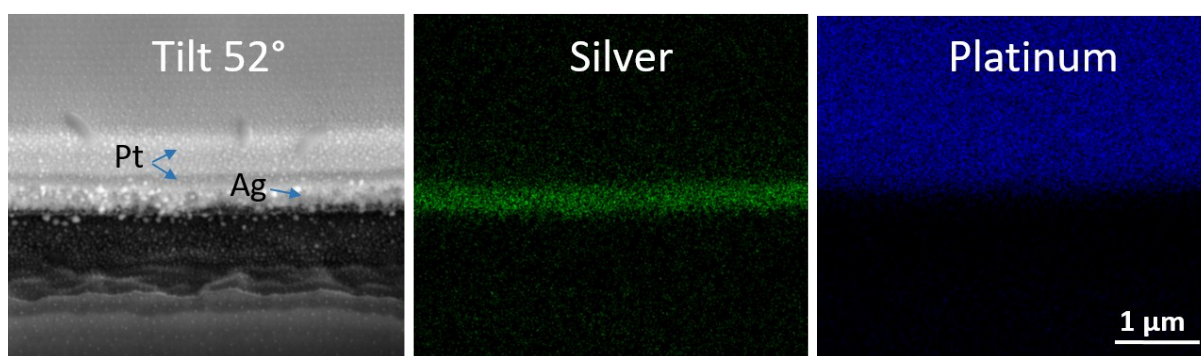


Fig. S1 SEM and EDS mapping for the pattern cross section indicating the existence of silver and platinum.

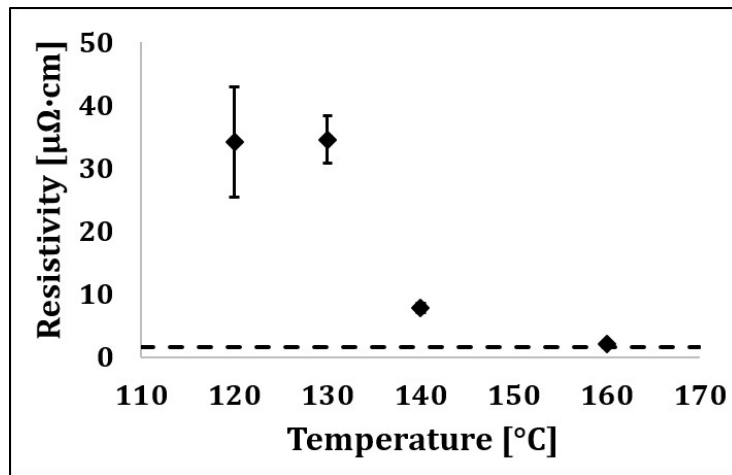


Fig. S2 Resistivity of silver tracks thermally sintered at various temperatures. Dashed line belongs to silver bulk resistivity.

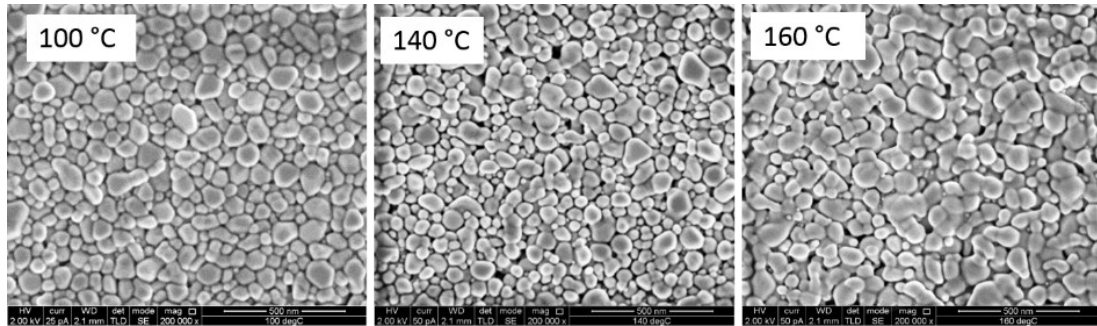


Fig. S3 SEM images of silver tracks after sintering at 100, 140, and 160 °C.