

Supplementary information

“Conductive biofoams of wheat gluten containing carbon nanotubes, carbon black or reduced graphene oxide”

Qiong Wu^a, Henrik Sundborg^a, Richard L. Andersson^a, Kevin Peuvot^a, Léonard Guex^a, Fritjof Nilsson^a, Mikael S. Hedenqvist^a, Richard T. Olsson^{a*}

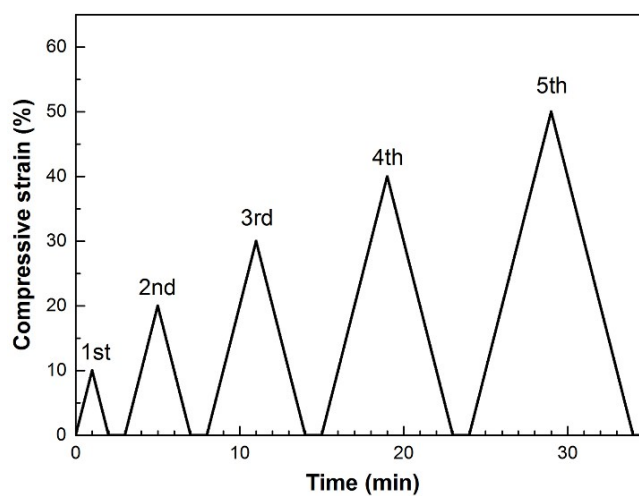


Fig. S1 Compressive strain as a function of time performed in the cyclic compression test

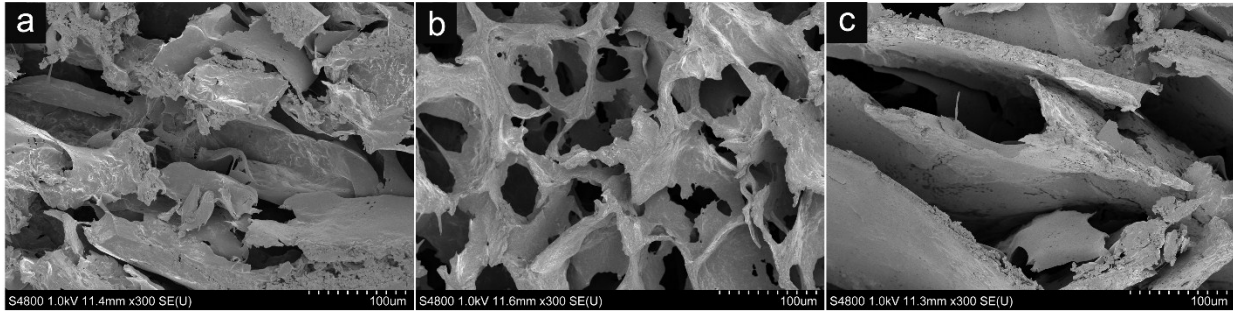


Fig. S2 SEM micrographs showing the cross-sections of plasticised-WG foams with (a) 0.41 vol.% CNT, (b) 0.44 vol.% CB, (c) 0.39 vol.% rGO after compressed to 60 %

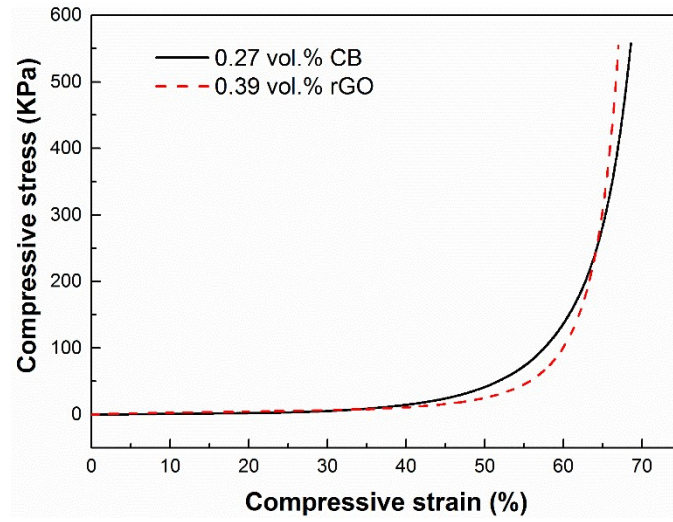


Fig. S3 Stress-strain curves of plasticised-WG foams with 0.27 vol.% CB (solid black) and 0.39 vol.% rGO (dash red)

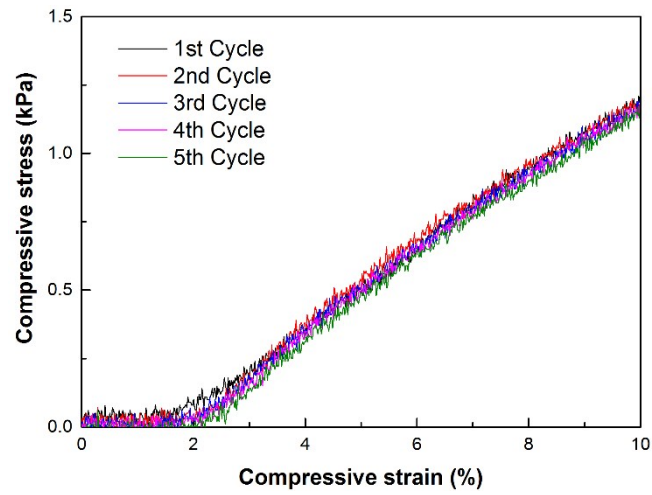


Fig. S4 Cyclic compression test of CNT(0.41) foam compressed to 10 % strain on each cycle (The flat region at strain 0-2% was due to the preloading)