

Supporting information

for

Cinobufagin, a bufadienolide, activates ROS-mediated pathways to trigger human lung cancer cell apoptosis *in vivo*

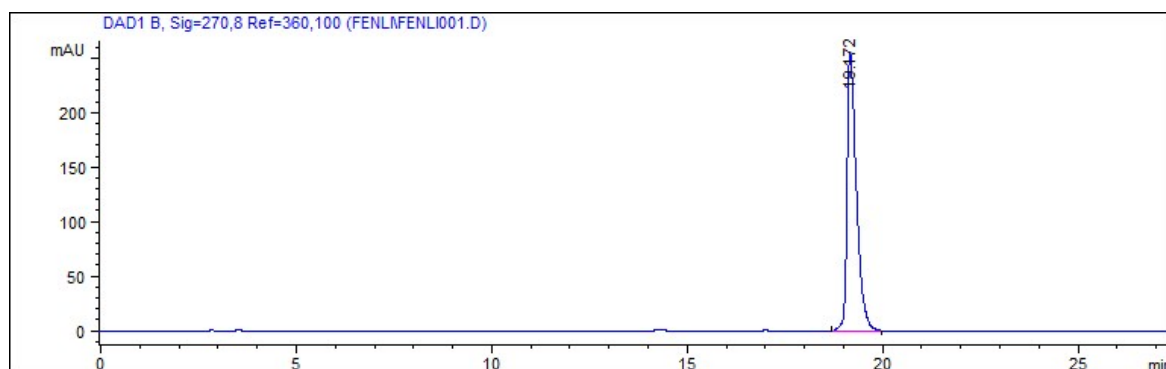


Figure S1. Reversed-phase HPLC traces for cinobufagin on Agilent 1100 series instrument.

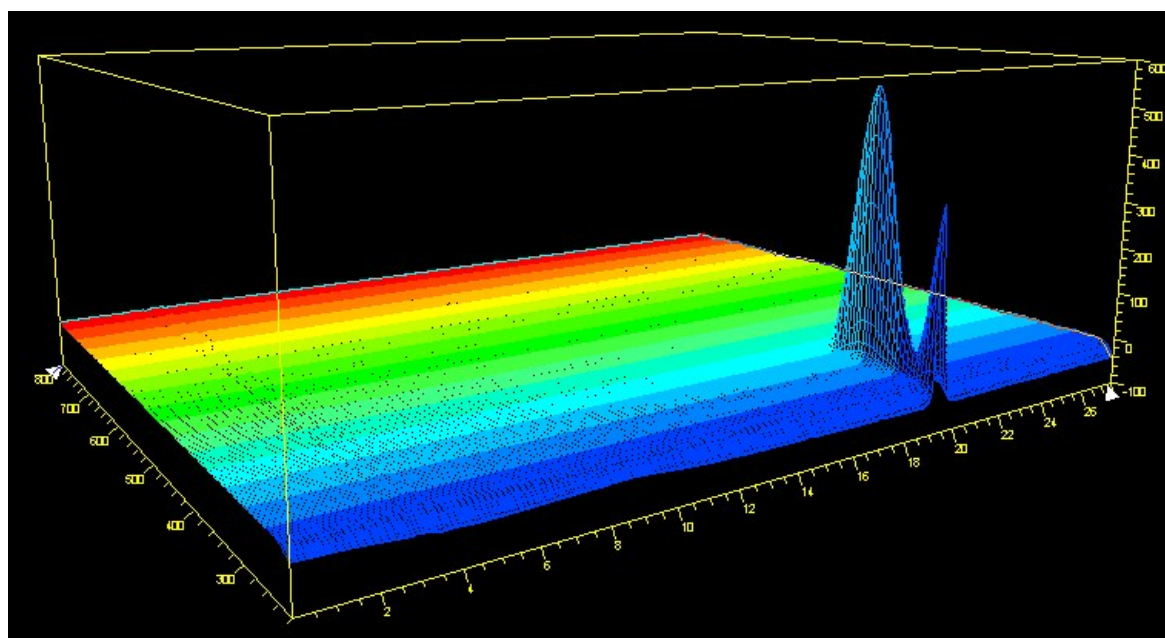


Figure S2. 3D spectrum of cinobufagin on Agilent 1100 series instrument.