

MS/MS data information of potential biomarkers

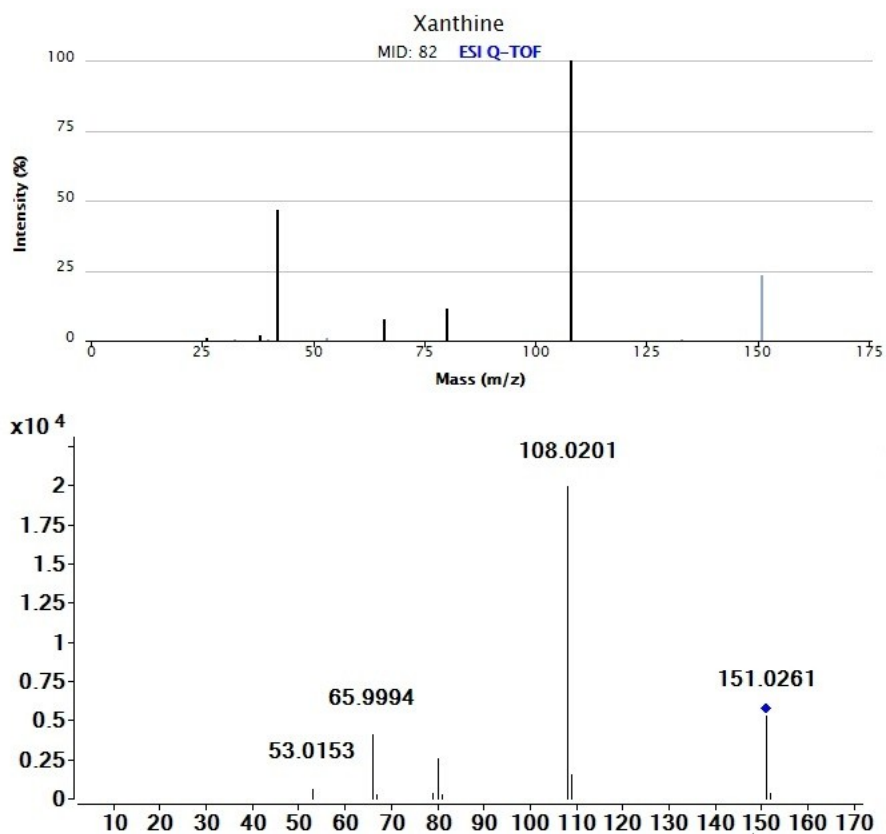


Figure S1. Identification of xanthine by MS/MS.

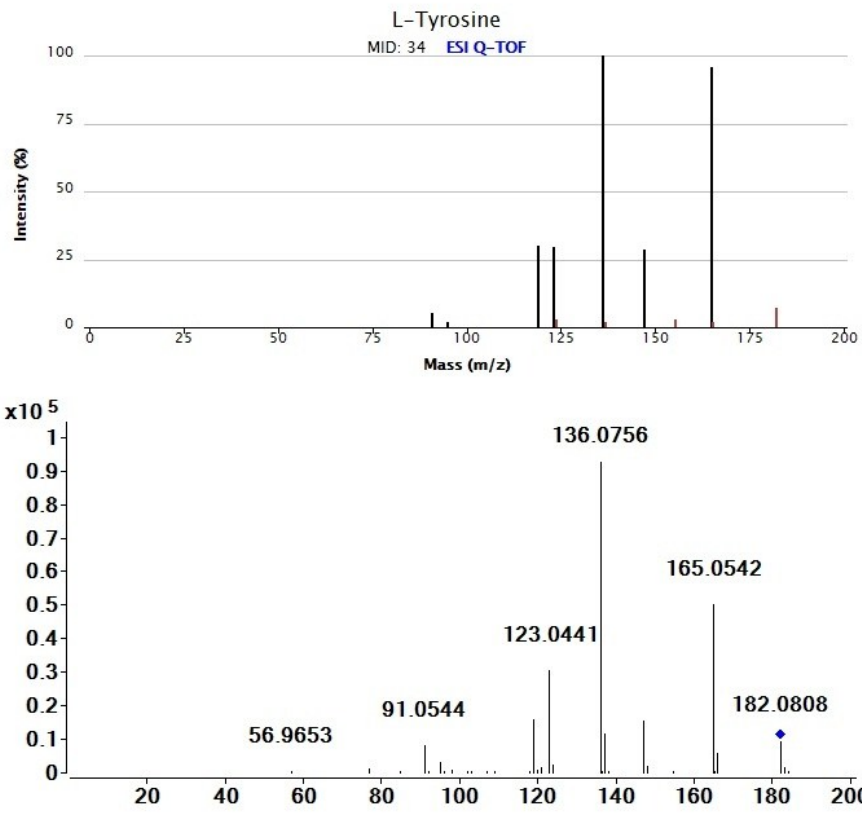


Figure S2. Identification of L-Tyrosine by MS/MS.

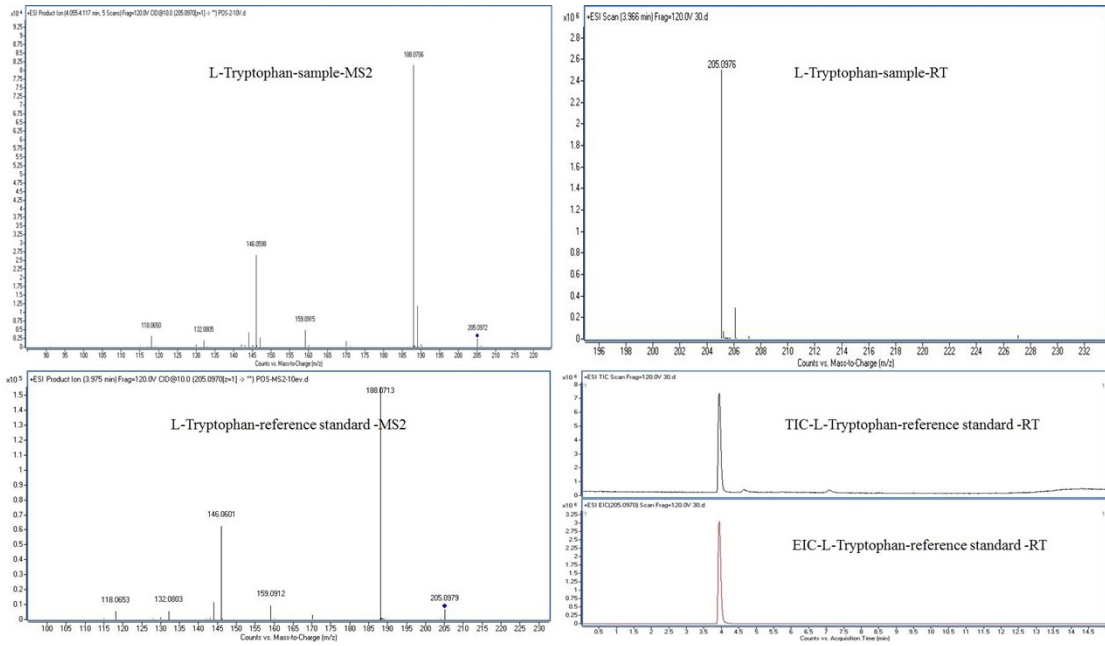


Figure S3. Identification of L-Tryptophan by standard comparison.

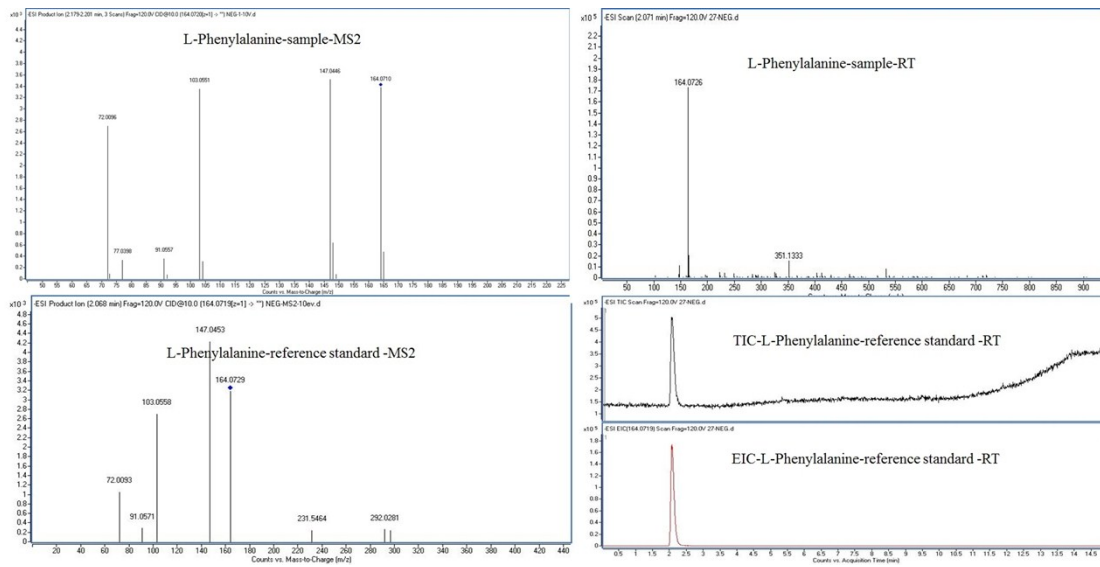


Figure S4. Identification of L-Phenylalanine by standard comparison.

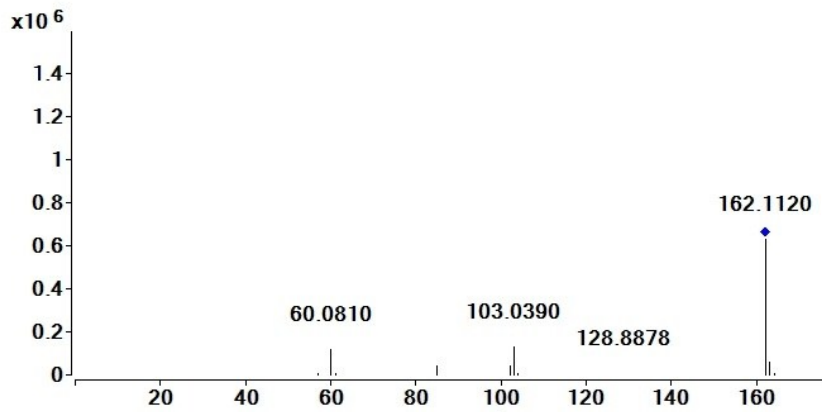
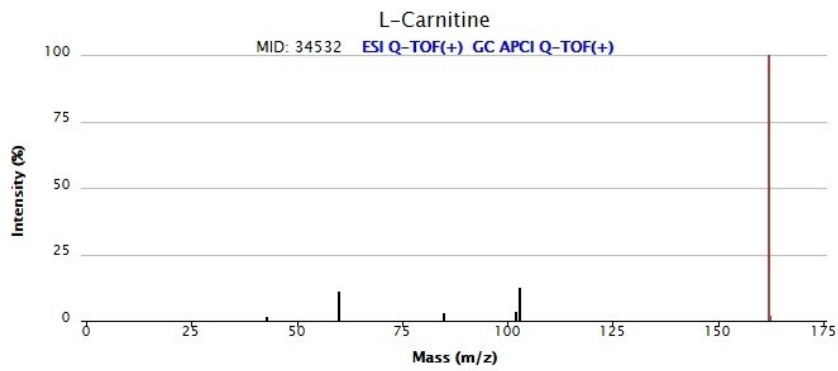


Figure S5. Identification of L-Carnitine by MS/MS.

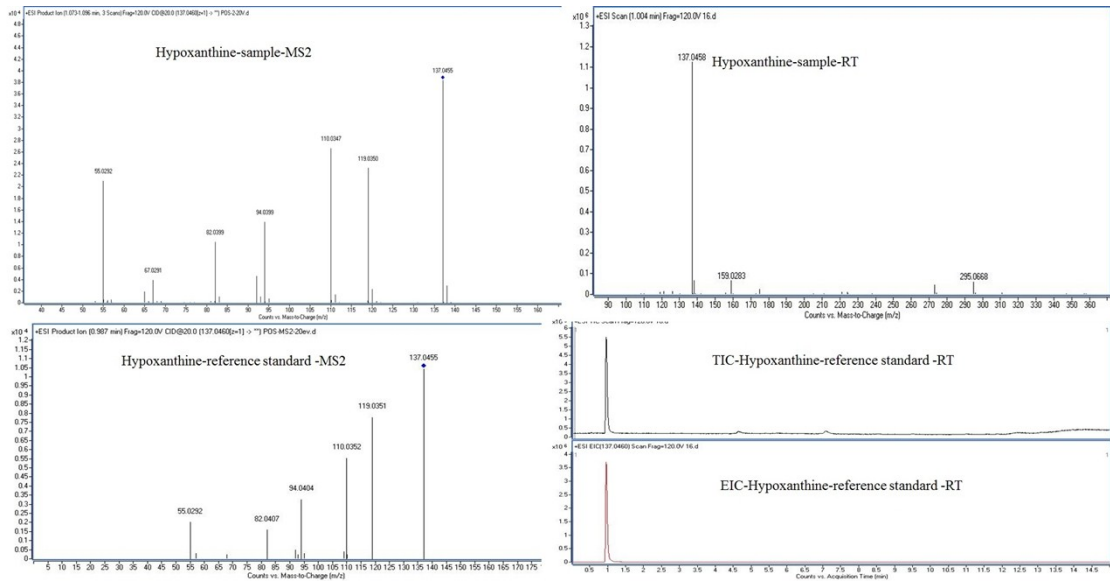


Figure S6. Identification of hypoxanthine by standard comparison.

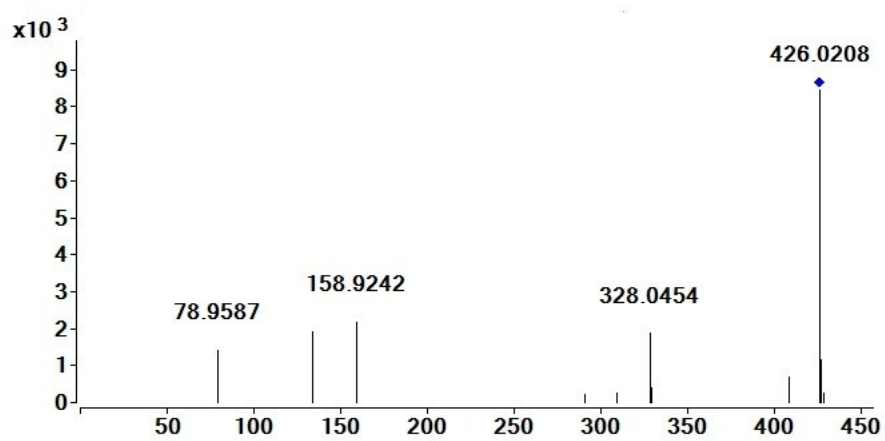
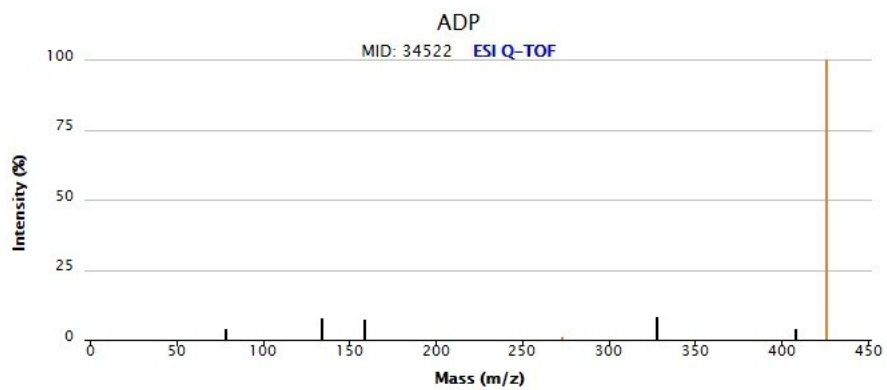


Figure S7. Identification of ADP by MS/MS.