

## **Supporting Information**

**for**

### **Synergistic influence of halogenated flame retardants and nanoclay on flame performance of high density polyethylene and wood flour composites**

Jinlong Zhang<sup>a</sup>, Qinglin Wu<sup>a\*</sup>, Guangyao Li<sup>b\*</sup>, Mei-Chun Li<sup>a</sup>, Xiuxuan Sun<sup>a</sup>, and Dennis Ring<sup>c</sup>

<sup>a</sup> School of Renewable Natural Resources, Louisiana State University Agricultural Center,  
Baton Rouge, LA 70803, USA

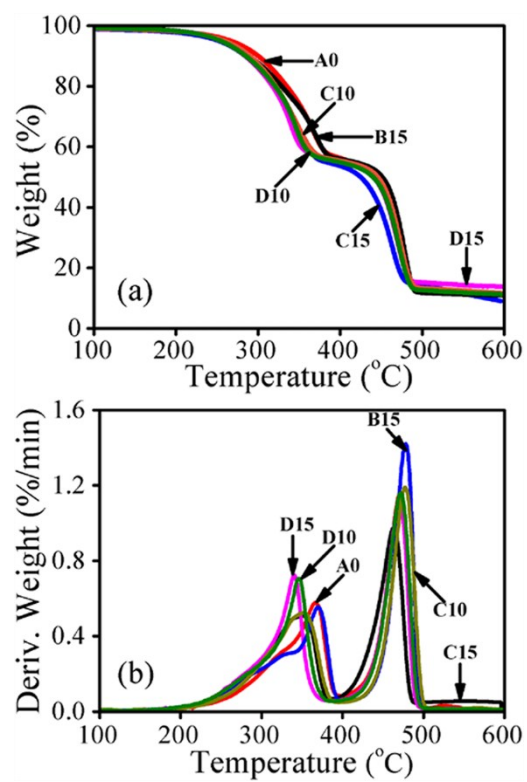
<sup>b</sup> School of Engineering, Zhejiang Agriculture and Forestry University, Lin An 311300, Zhejiang,  
China

<sup>c</sup> Department of Entomology, Louisiana State University Agricultural Center, Baton Rouge, LA  
70803, USA

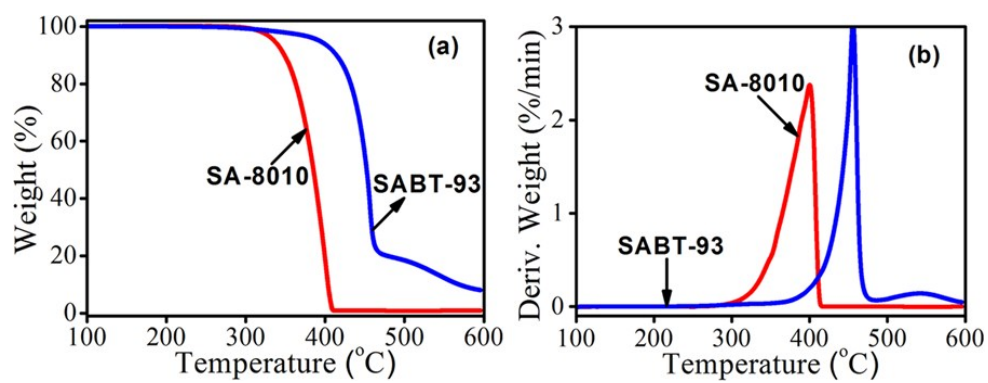
#### **Corresponding Authors**

\* E-mail: [20010012@zafu.edu.cn](mailto:20010012@zafu.edu.cn) and [qwu@agcenter.lsu.edu](mailto:qwu@agcenter.lsu.edu)

Supporting information consists of 6 pages, 4 Figures and 1 Table.



**Figure S1.** Integrated TGA curves of composites A0, B15, C10, C15, D10 and D15

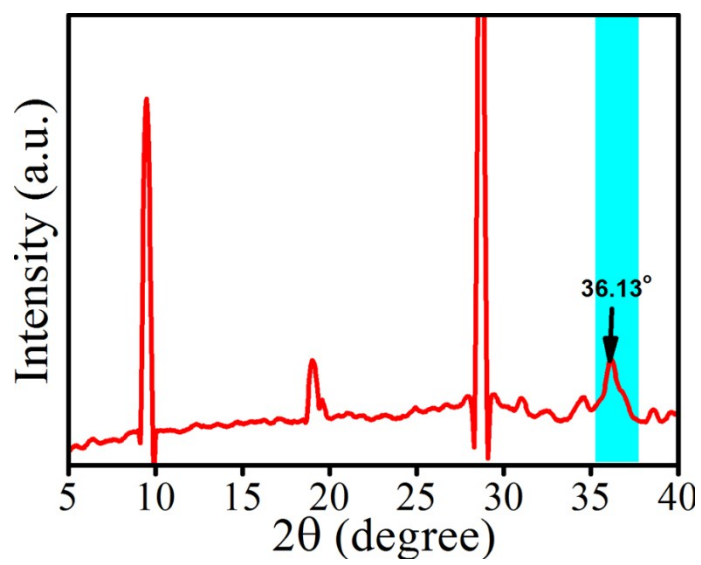


**Figure S2.** TGA curves of SA-8010 and SABT-93

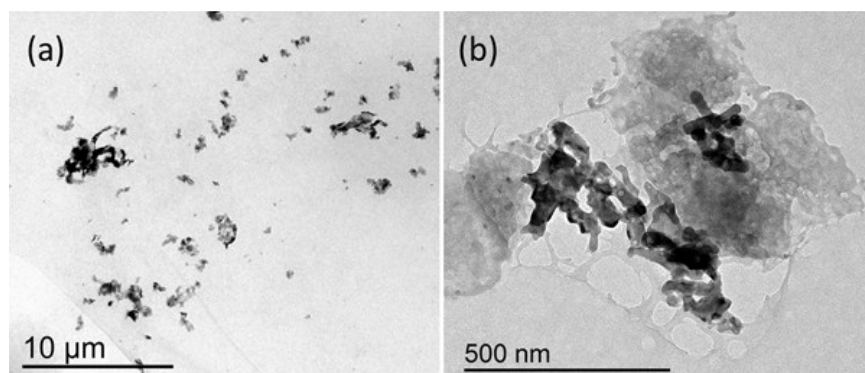
**Table S1.** Thermogravimetric properties of SA-8010 and SABT-93\*

Samples	T <sub>1%</sub> (°C)	T <sub>peak1</sub> (°C)
SA-8010	310	400
SABT-93	313	455

\*T<sub>1%</sub> = decomposition temperature at 1% mass loss; T<sub>peak1</sub> = the first peak temperature



**Figure S3.** XRD pattern of composites A0.



**Figure S4.** TEM images of composites C10.