

Supporting Information

Enhanced tribological performance of PEEK/SCF/PTFE hybrid composites by graphene

**Liu Liu, Fei Yan, Fangyuan Gai, Linghan Xiao, Lei Shang,
Ming Li*, Yuhui Ao***

*Jilin Province Key Laboratory of Carbon Fiber Development and
Application, College of Chemistry and Life Science, Changchun
University of Technology, Changchun 130012, China*

E-mail address: aoyuhui@ccut.edu.cn, liming15@ccut.edu.cn

Tel: +86-431-85968078. Fax: +86-431-85968078

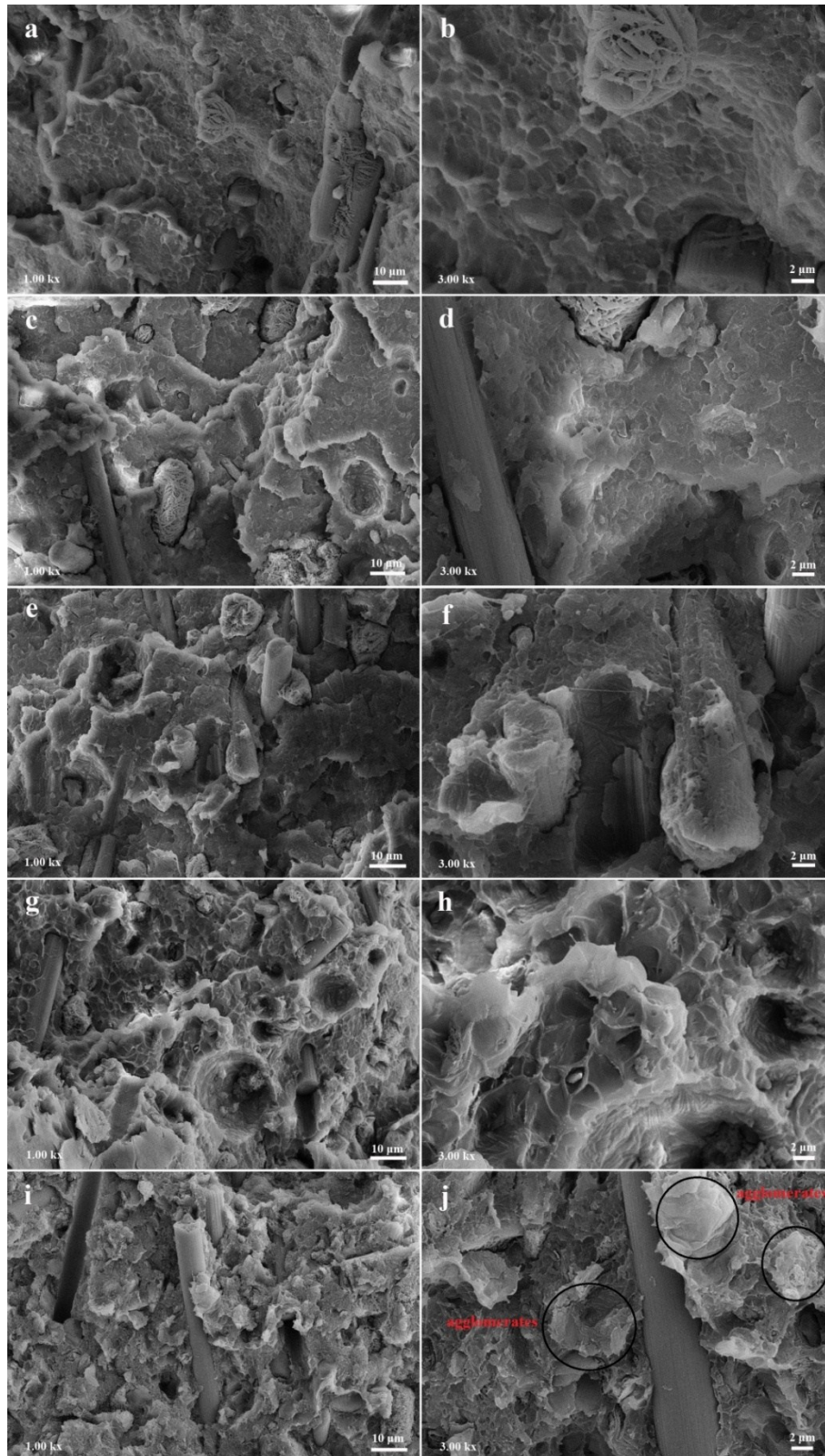


Fig. S1 SEM micrographs of fracture surfaces of (a-b) PSP, (c-d) PSP0.5GE, (e-f) PSP1.0GE, (g-h) PSP2.0GE and (i-j) PSP3.0GE composites. The circle shows the aggregation of GE in the PEEK.

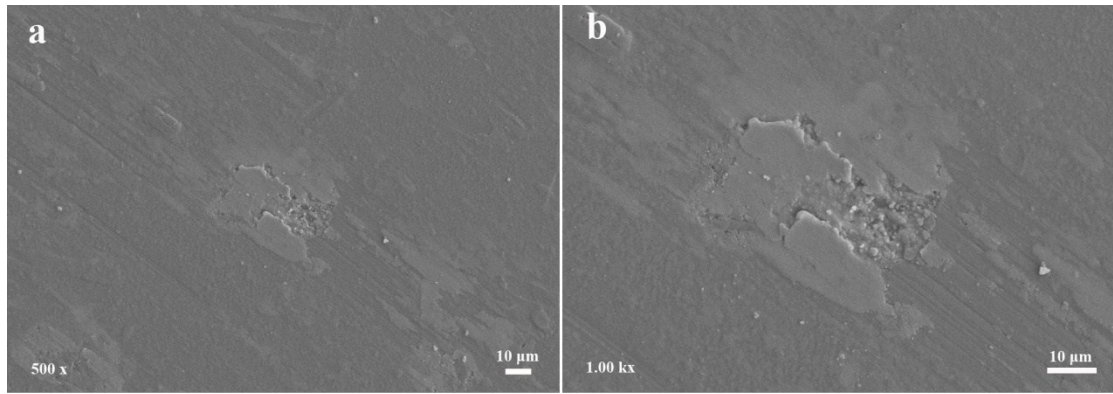


Fig. S2 SEM micrographs of worn surfaces of PSP3.0GE composites. (4 MPa, 1 m/s, 25 °C)

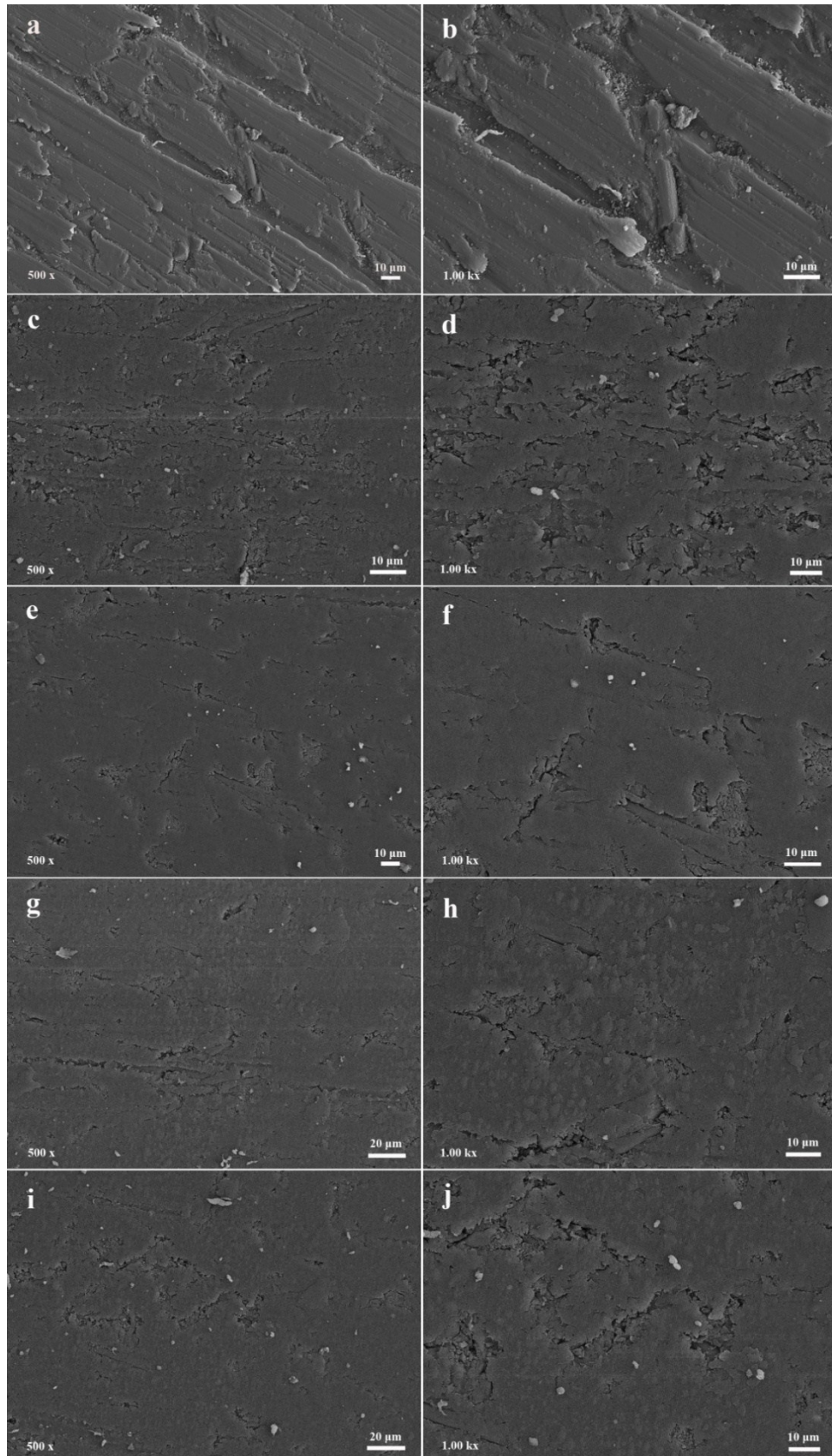


Fig. S3 SEM micrographs of worn surfaces of (a-b) PSP, (c-d) PSP0.5GE, (e-f) PSP1.0GE, (g-h) PSP2.0GE and (i-j) PSP3.0GE composites. (4 MPa, 2 m/s, 150 °C)

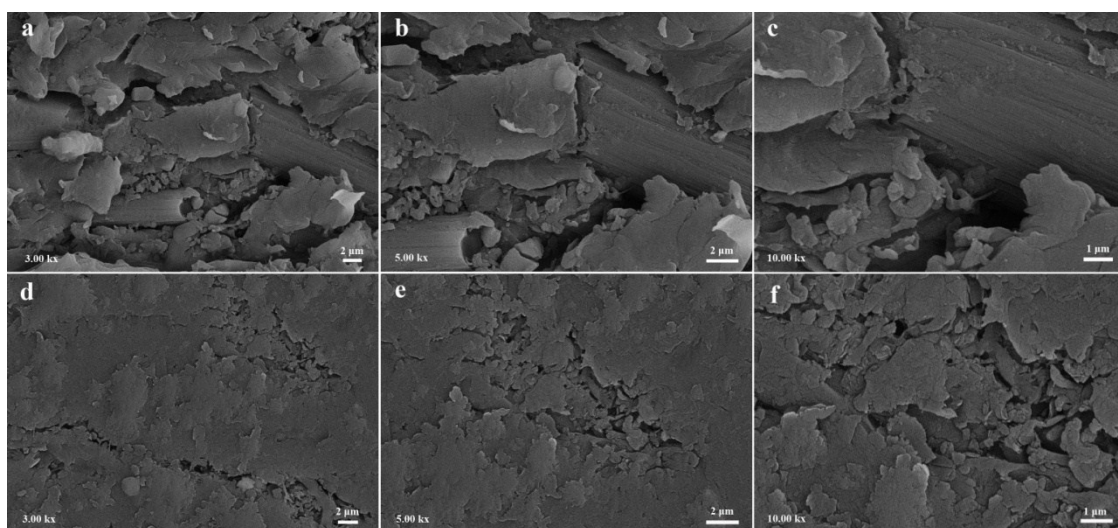


Fig. S4 SEM micrographs of worn surfaces of (a-c) PSP2.0graphite composites and (d-f) PSP2.0GE composites. (4 MPa, 2 m/s, 150 °C)