

Supporting Information

Schiff base derived Fe³⁺-selective fluorescence turn-off chemsensors based on triphenylamine, indole: synthesis, properties and application in living cells

Chengqiang Pan ^a, Kai Wang ^a, Shaomin Ji ^a, Huaqian Wang ^{a,*}, Zhongzhi
Li ^a, Huahong He ^b, Yanping Huo ^{a, c*}

^a *School of Chemical Engineering and Light Industry, Guangdong University of
Technology, Guangzhou 510006, China*

^b *Guangzhou Institute for Drug Control, Guangzhou 510160, China*

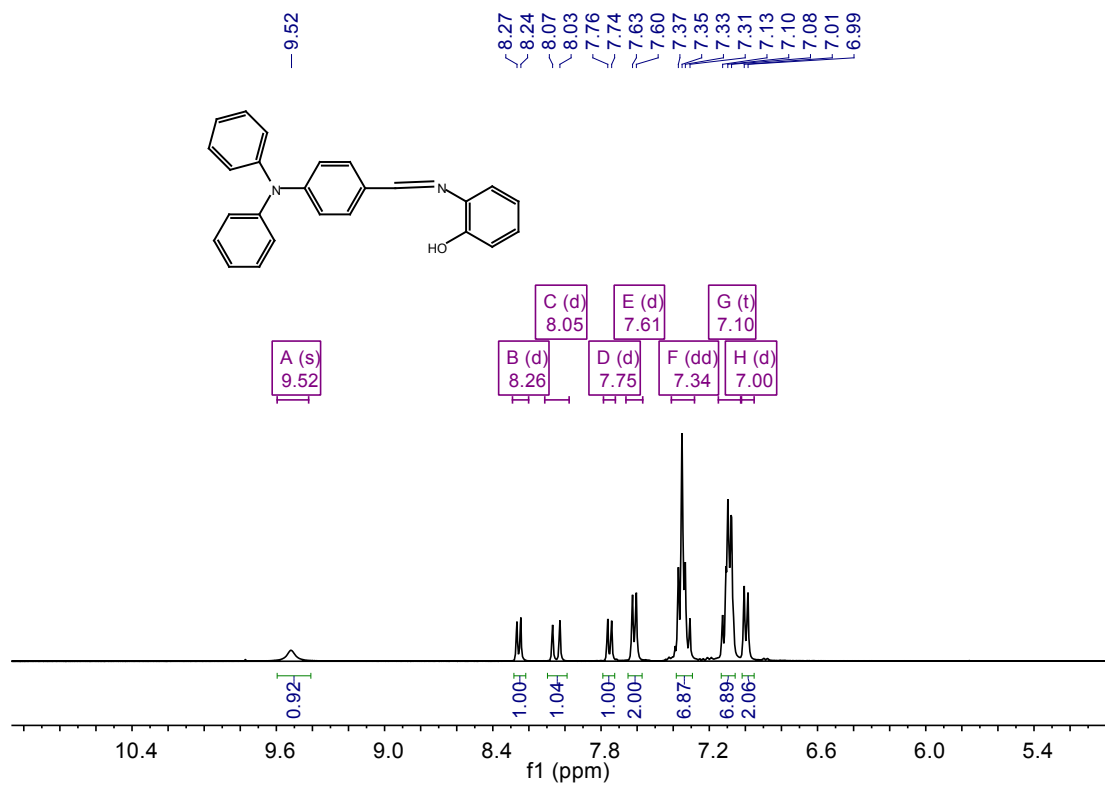
^c *Guangdong Engineering Research Center for Scientific Research and Biochemical
Detection reagent, Guangzhou 510006, China*

*Corresponding authors. Tel.: +86 20 39322236; Fax: +86 20 39322235; Mobile: +86
13798135622; 13560355016. E-mail addresses: yphuo@gdut.edu.cn(Y. Huo),
huaqian wang@126.com (H. Wang).

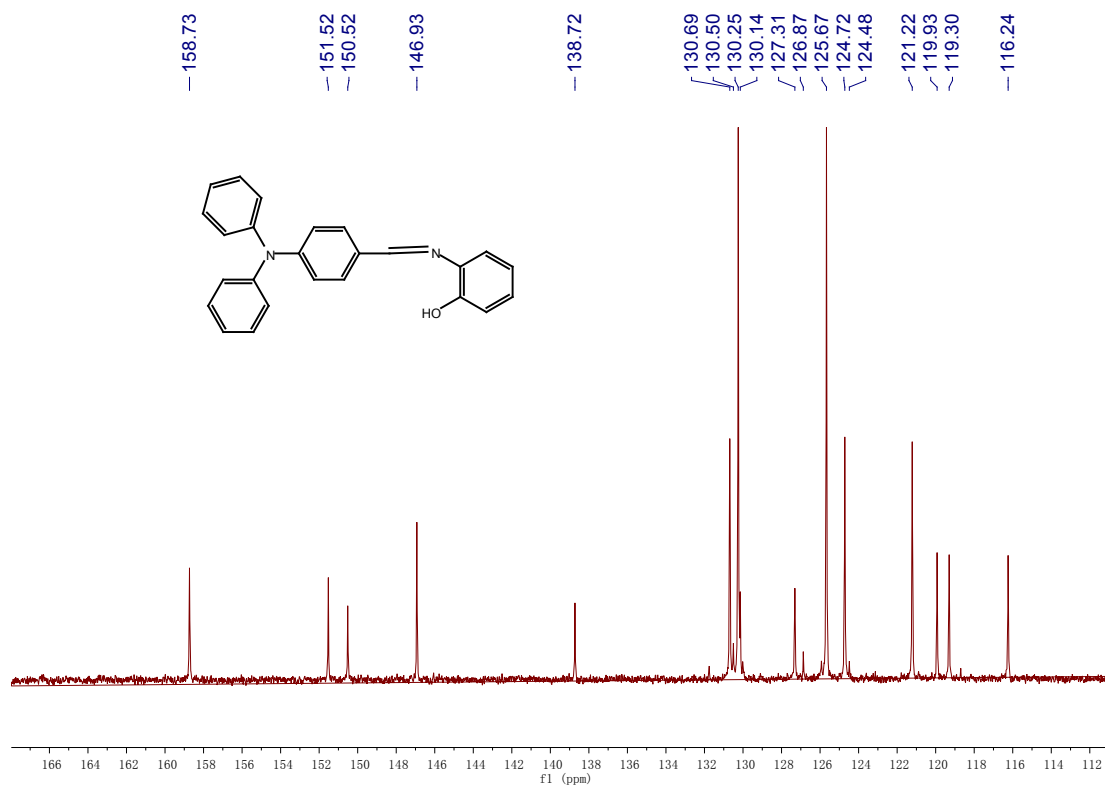
Table of Contents

1 Copies of ¹H NMR and ¹³C NMR Spectra of sensors.....	S2-3
2 Copies of ESI-MS Spectra.....	S4
3 Copies of UV-vis absorption spectra.....	S4
4 Copies of fluorescence images of S2 in PC3 cells.....	S5

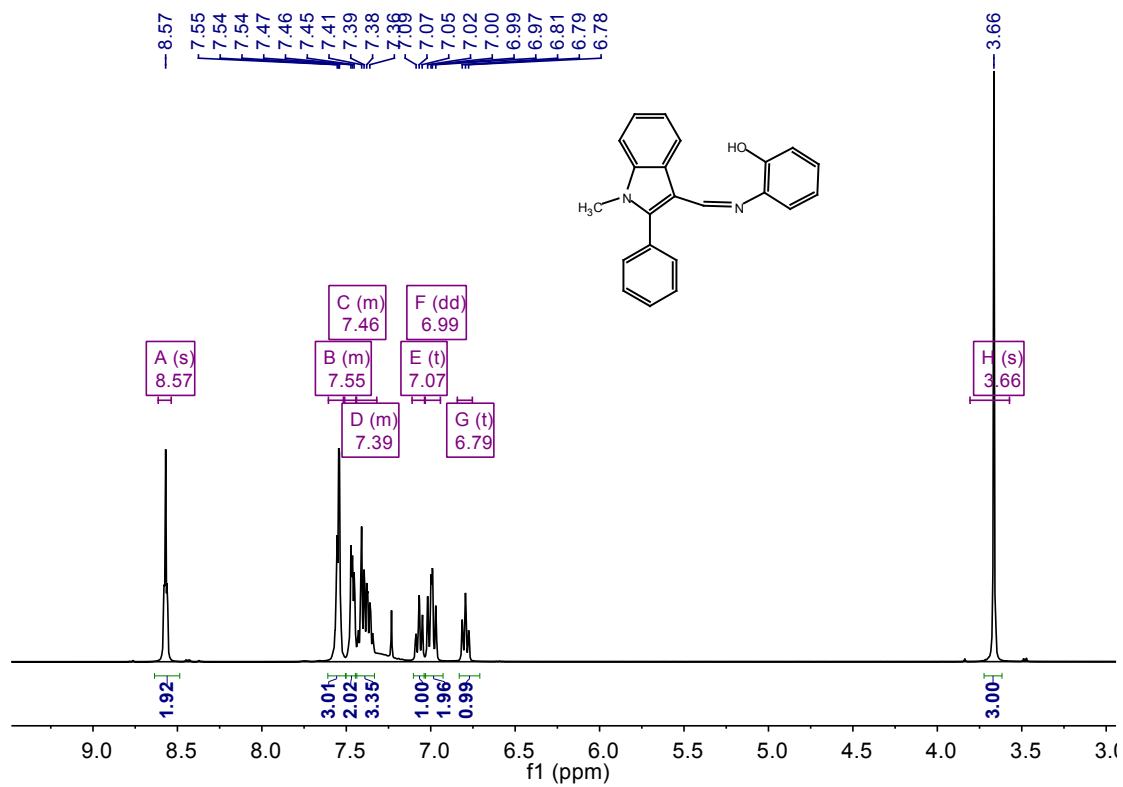
¹H NMR of S1



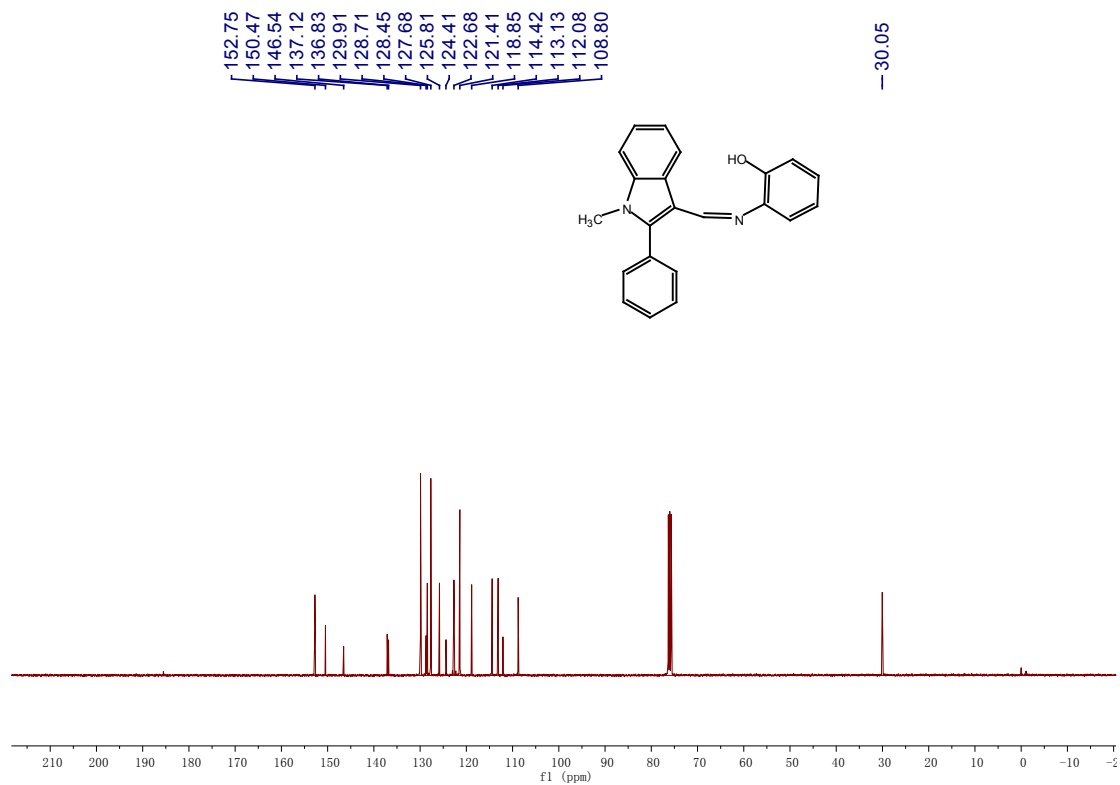
¹³C NMR of S1



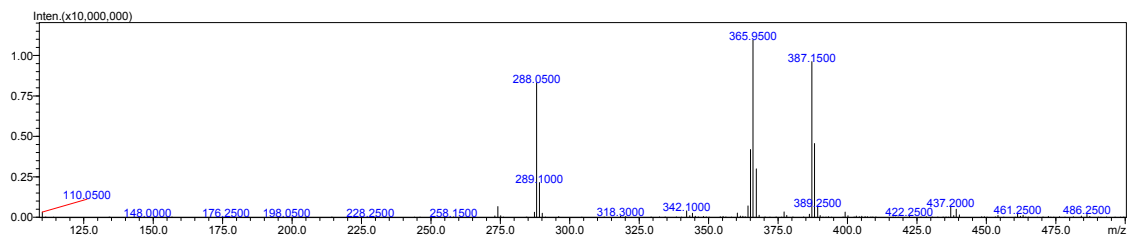
¹H NMR of S2



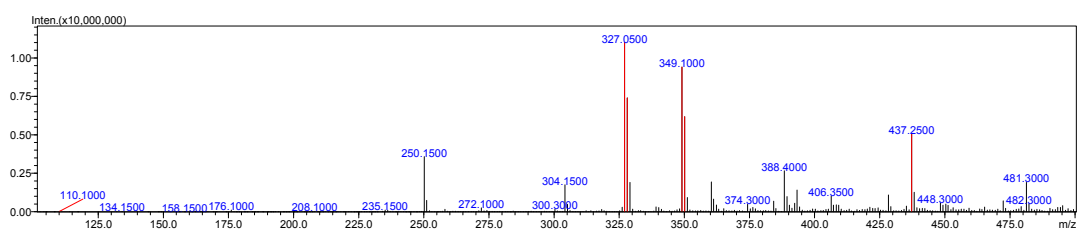
¹³C NMR of S2



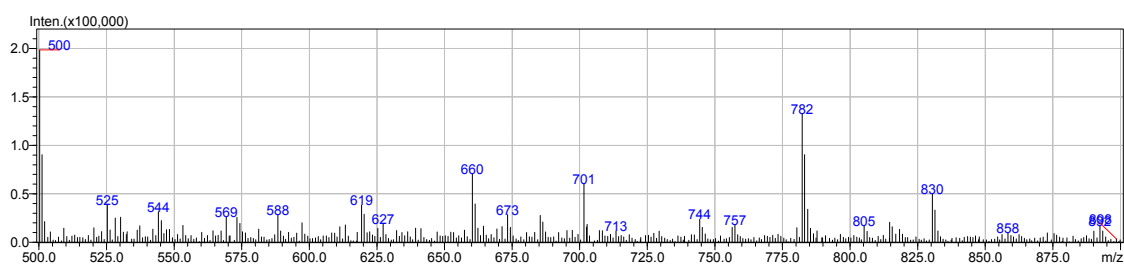
ESI-MS of S1



ESI-MS of S2



ESI-MS of S1 and Fe³⁺



ESI-MS of S1 and Fe³⁺

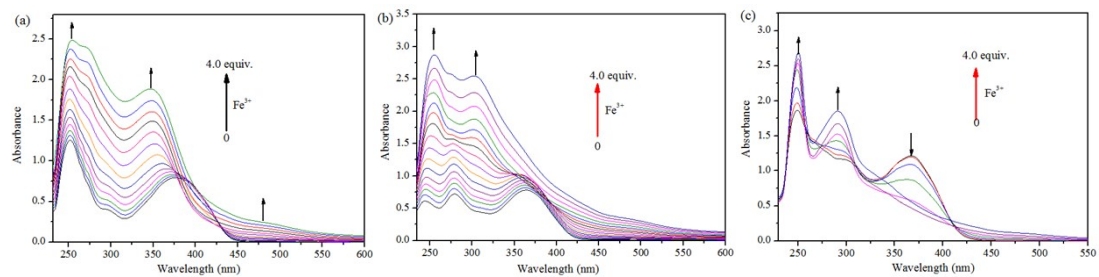
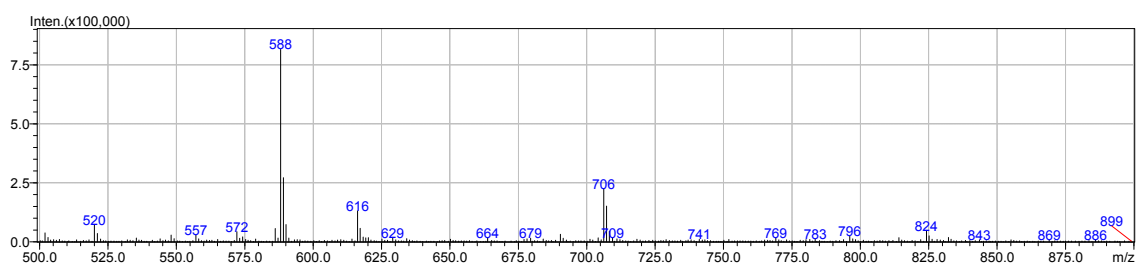


Fig. S1. UV-vis titration curves of probe (a) S1, (b) S2 and (c) S3 in THF solution upon addition of Fe³⁺.

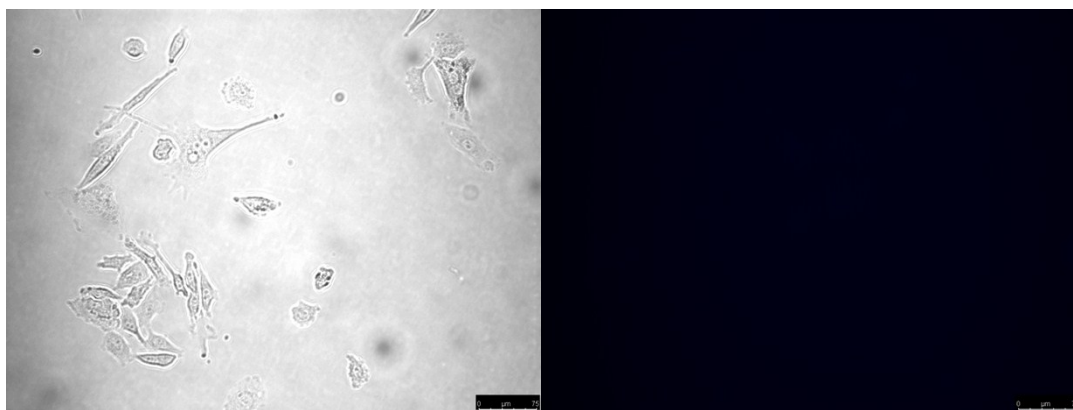


Fig. S2. Fluorescence microscopy images of Fe^{3+} in PC3 cells (Olympus IX71, 40 \times objective lens). Bright-field transmission image of PC3 cells (left). Fluorescence image of PC3 cells incubated with S2 (10 μM) (right)