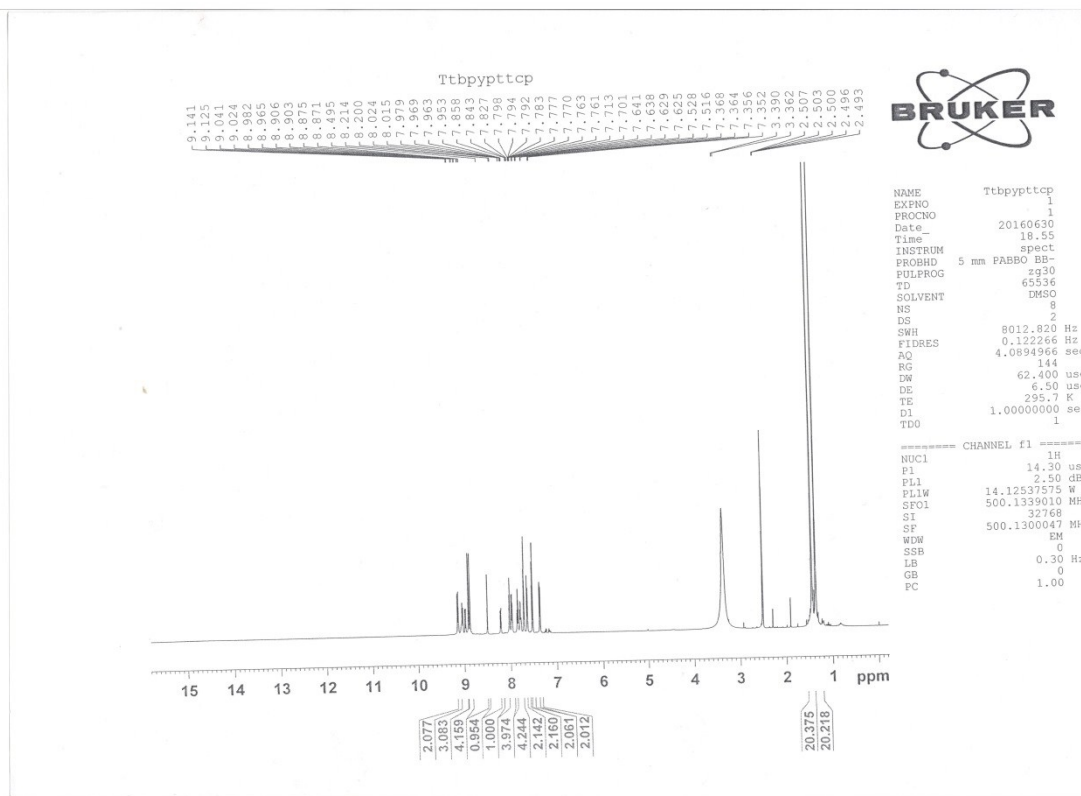
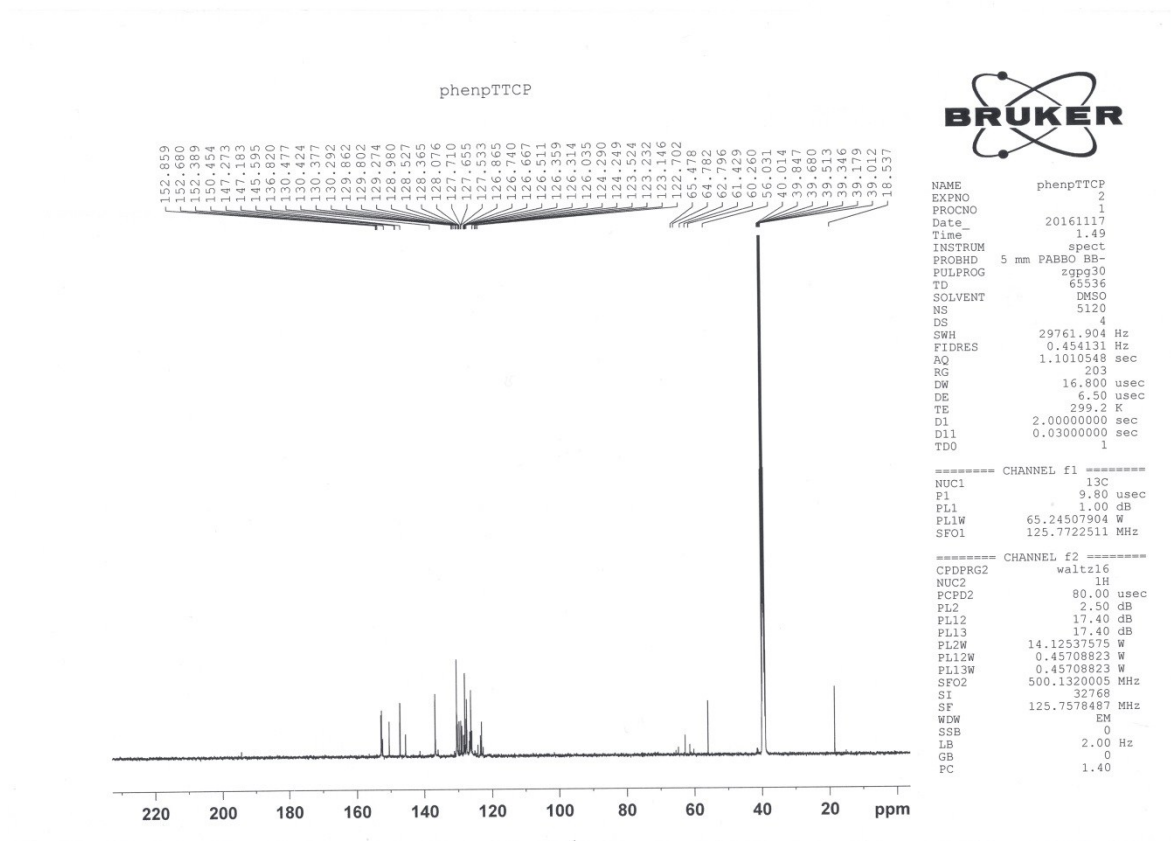




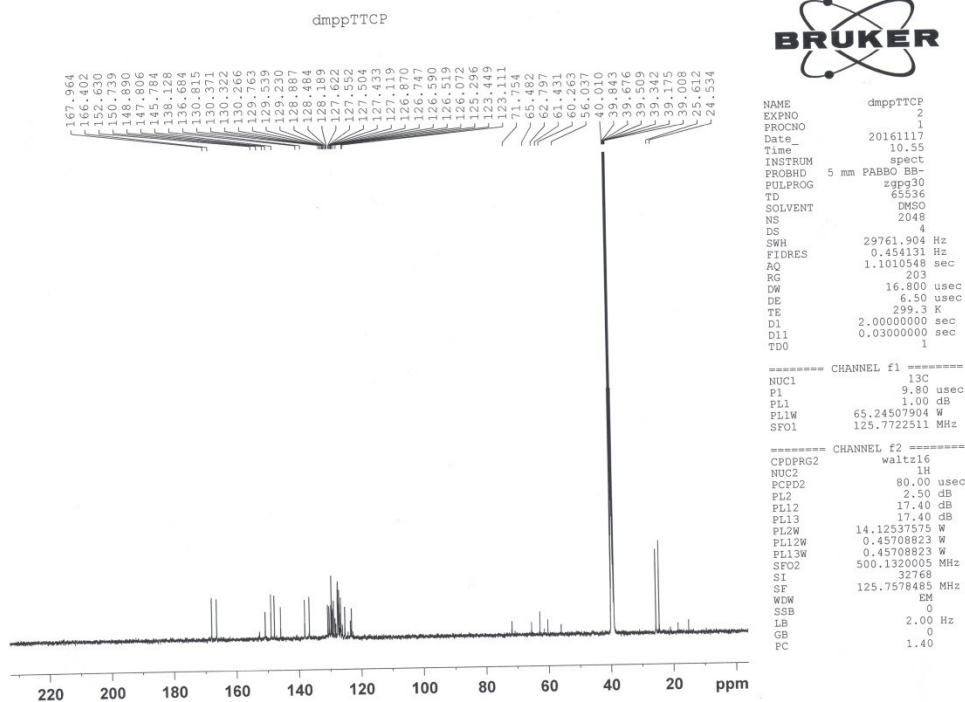
**Complex [Ru(ttbp)<sub>2</sub>(PTCP)]<sup>2+</sup>**



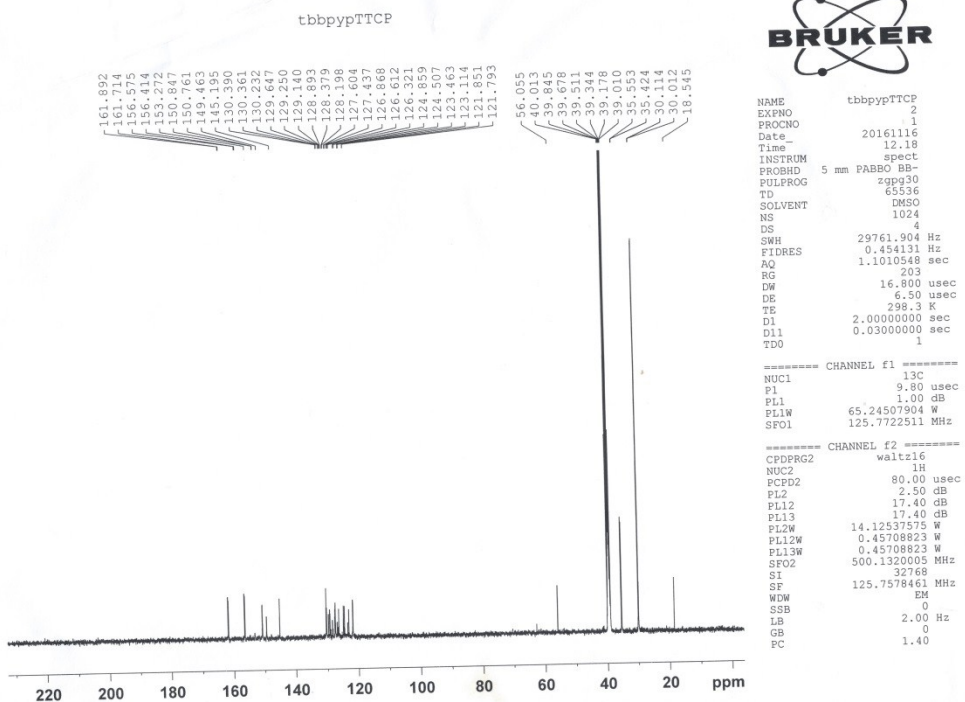
**Fig. S2** <sup>13</sup>C NMR for the complexes  
 Complex [Ru(phen)<sub>2</sub>(PTCP)]<sup>2+</sup>



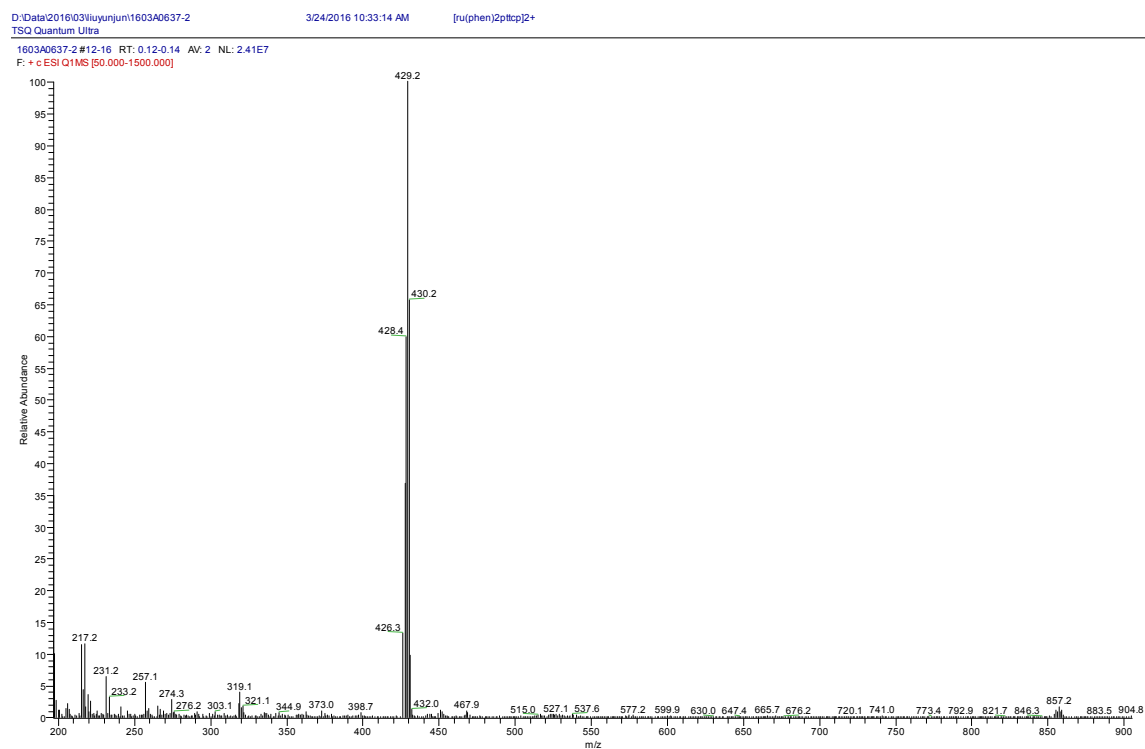
Complex  $[\text{Ru}(\text{dmp})_2(\text{PTCP})]^{2+}$



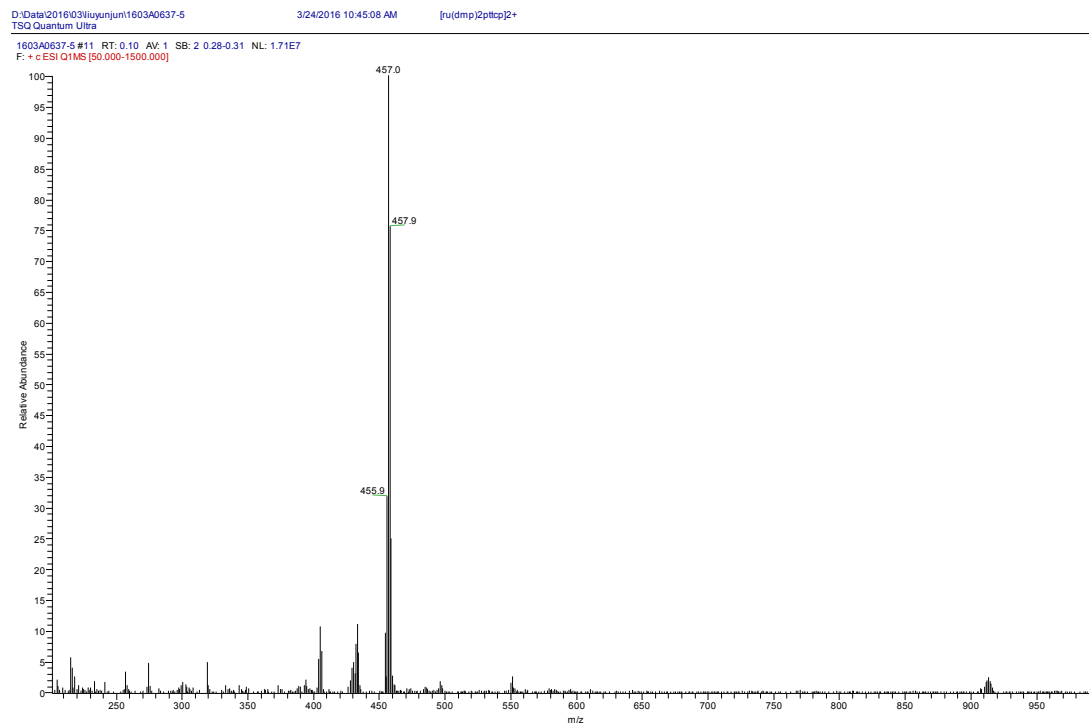
Complex  $[\text{Ru}(\text{tbbpy})_2(\text{PTCP})]^{2+}$



**Fig. S3** ESI-MS for the complexes  
**[Ru(phen)<sub>2</sub>(PTCP)]<sup>2+</sup>**



**[Ru(dmp)<sub>2</sub>(PTCP)]<sup>2+</sup>**



# [Ru(ttbp)<sub>2</sub>(PTCP)]<sup>2+</sup>

