

1 **Electronic Supplementary Information**

2 **A Simple, Fast, and Sensitive Colorimetric Assay for Visual** 3 **Detection of Berberine in Human Plasma by NaHSO₄** 4 **Optimized Gold Nanoparticles**

5 Ziwei Hu,^{†,#} Mingshan Xie,^{†,#} Danting Yang,[‡] Dong Chen,[§] Jingyi Jian,[†] Haibin Li,[†] Kaisong
6 Yuan,[†] Zhengjin Jiang ^{*,†} and Haibo Zhou^{*,†}

7 [†] Institute of Pharmaceutical Analysis, College of Pharmacy, Jinan University, Guangzhou, Guangdong
8 510632, China

9 [‡] Department of Preventative Medicine, Zhejiang Provincial Key Laboratory of Pathological and
10 Physiological Technology, Medical School of Ningbo University, Ningbo, Zhejiang 315211, China

11 [§] Department of Urology, Sun Yat-sen University Cancer Center, Guangzhou, Guangdong 510060,
12 China

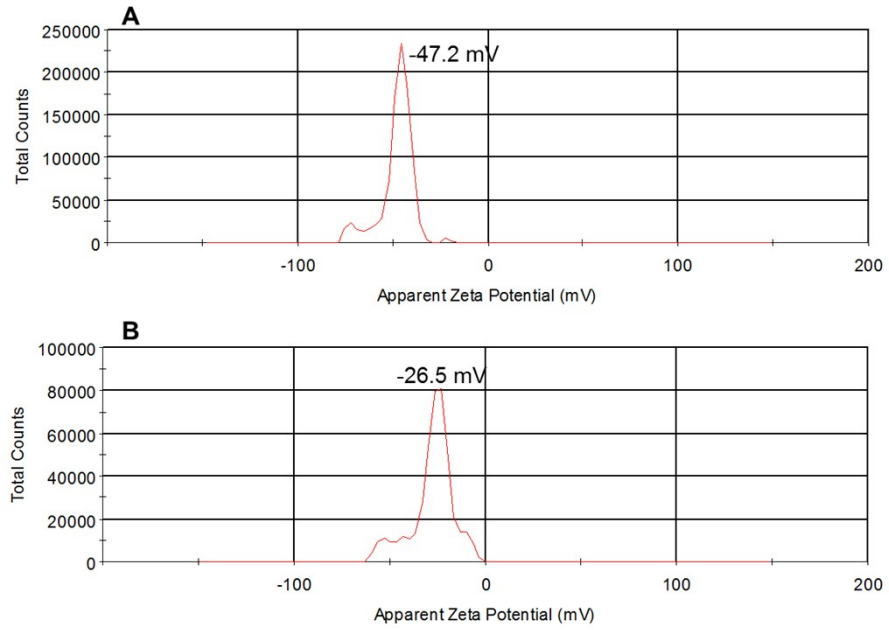
13

14

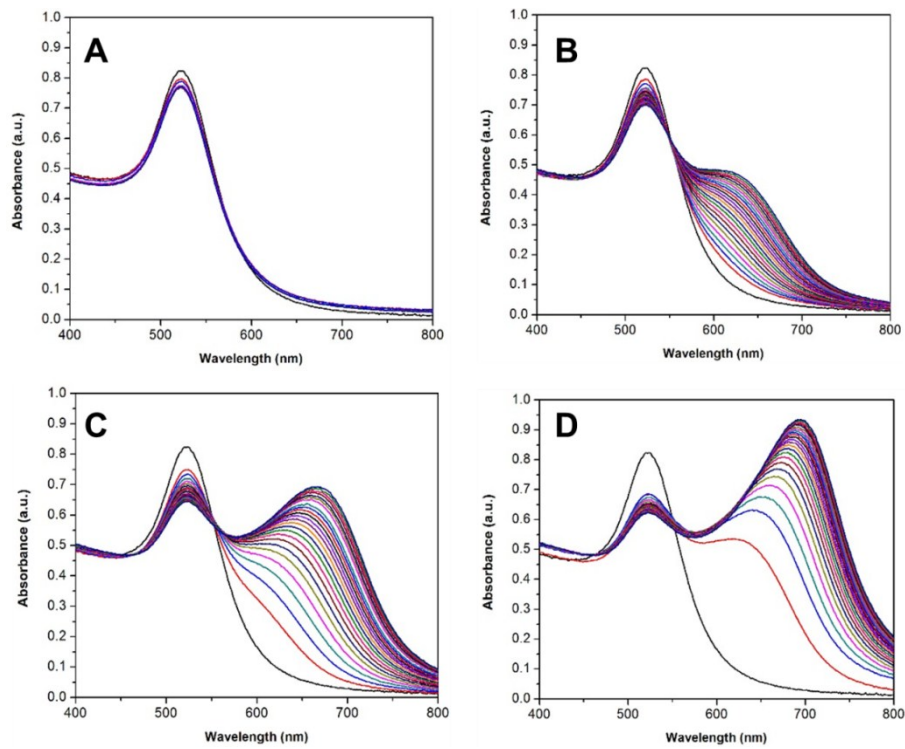
15

16

17 **Limit of Detection (LOD) Measurements.** The LOD was calculated using the below
18 equation: $LOD = 3SD/S$. Where "SD" is the standard deviation of the blank, "S" is the
19 slope of the calibration curve ($Y = 0.0609X + 0.0056$). Herein the SD is 0.001308, so
20 the LOD is 0.06 $\mu\text{g/mL}$.



1
2 Figure S1. Zeta potential of AuNPs (A) before and (B) after the addition of 5 μM berberine.
3



4
5 Figure S2. Time course of the aggregation of AuNPs as induced by (A) 1.0 μM , (B) 2.0 μM ,
6 (C) 2.5 μM and (D) 3.0 μM of berberine monitored with UV-vis absorbance spectra at an
7 interval of 2.5 min.