

Preparation of an ion imprinted functionalized mesoporous silica for rapid and specific absorption Cr (III) ions in the effluents

Shuibin Cen,^a Weiming Li,^c Rong He^d, Jiean Tan^e, Haishui Wang,^{*a}

Chaohai Wei^b and Youwen Tang^{*e}

^aSchool of Chemistry and Chemical Engineering, South China University of Technology, Guangzhou 510641, China. Email: wanghsh@scut.edu.cn.

^bThe Key Lab of Pollution Control and Ecosystem Restoration in Industry Clusters, Ministry of Education, South China University of Technology, Guangzhou, China.

^cTechnical Service Center Laboratory of Panyu Entry-Exit Inspection & Quarantine Bureau, Guangzhou, China.

^dGuangzhou Center for Disease Control and Prevention, Guangzhou 510440, China.

^eMOE Key Laboratory of Laser Life Science, School of Chemistry and Environment, South China Normal University, 510631, Guangzhou, China. Email: tanglab@scnu.edu.cn.

Supplementary information

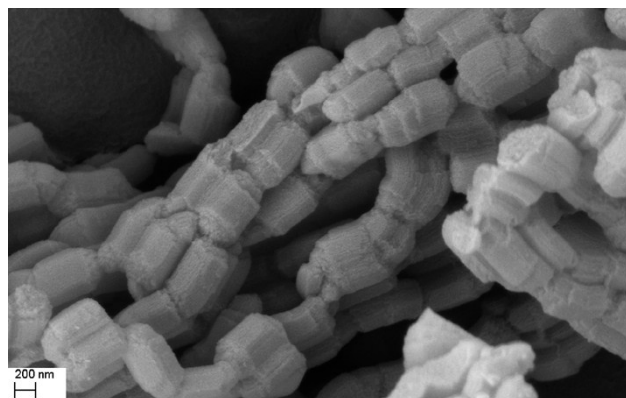


Fig. S1 SEM image of NIMS

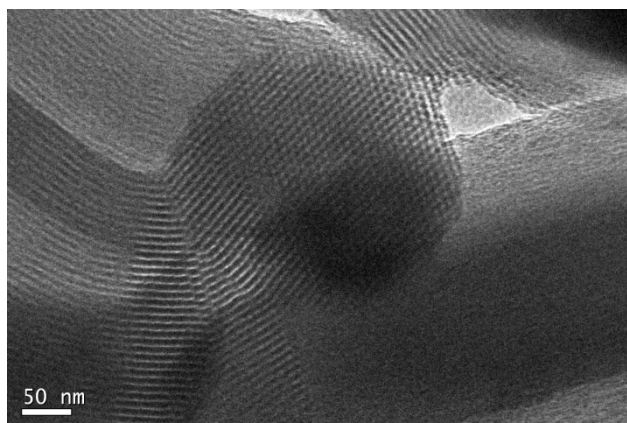


Fig. S2 TEM image of NIMS

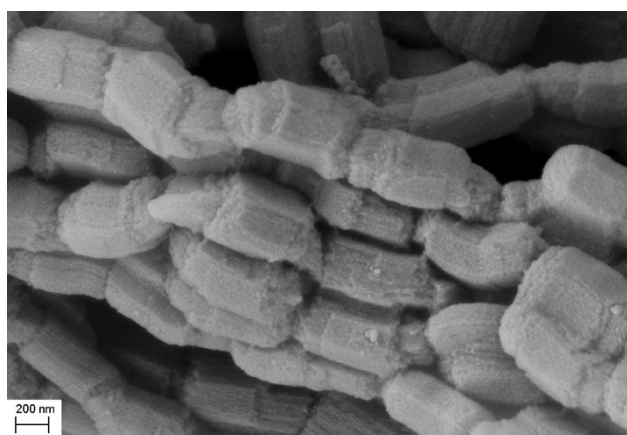


Fig. S3 SEM image of SBA-15

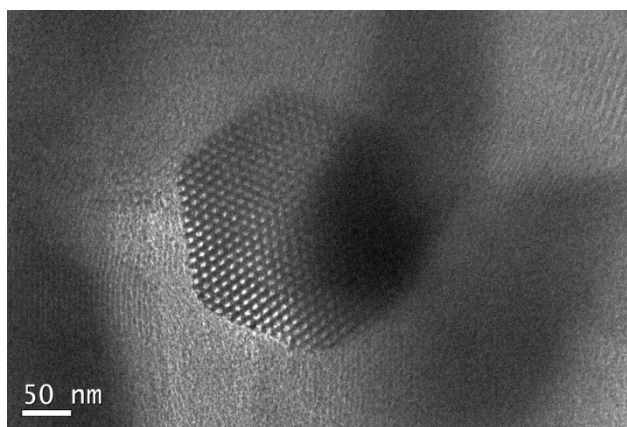


Fig. S4 TEM image of SBA-15