

Figure Captions

FIG.S1 SEM micrographs of the LMT ceramics sintered at (a) 1050 °C, (b) 1075 °C, (c) 1100 °C and (d) 1125 °C.

FIG.S2 Room-temperature XRD patterns of the $(1-x)\text{LMT}-x\text{BCB}$ ceramics sintered at their optimized temperatures: (a) $x=0.01$, 1000 °C; (b) $x=0.02$, 975 °C; (c) $x=0.03$, 900 °C; (d) $x=0.04$, 900 °C.

FIG.S3 SEM micrographs of the $(1-x)\text{LMT}-x\text{BCB}$ ceramics sintered at their optimized temperatures: (a) $x=0.01$, 1000 °C; (b) $x=0.02$, 975 °C; (c) $x=0.03$, 900 °C; (d) $x=0.04$, 900 °C.

FIG.S4 SEM micrographs of the $(1-y)[0.97\text{LMT}-0.03\text{BCB}]-y\text{TiO}_2$ ($y= 0.05, 0.10, 0.15, 0.20$) ceramics sintered at their optimized temperatures: (a) $y=0.05$, 875 °C; (b) $y=0.10$, 875 °C; (c) $y=0.15$, 875 °C; (d) $y=0.20$, 900 °C. (The EDS analysis of $0.85[0.97\text{LMT}-0.03\text{BCB}]-0.15\text{TiO}_2$ ceramics are inserted)

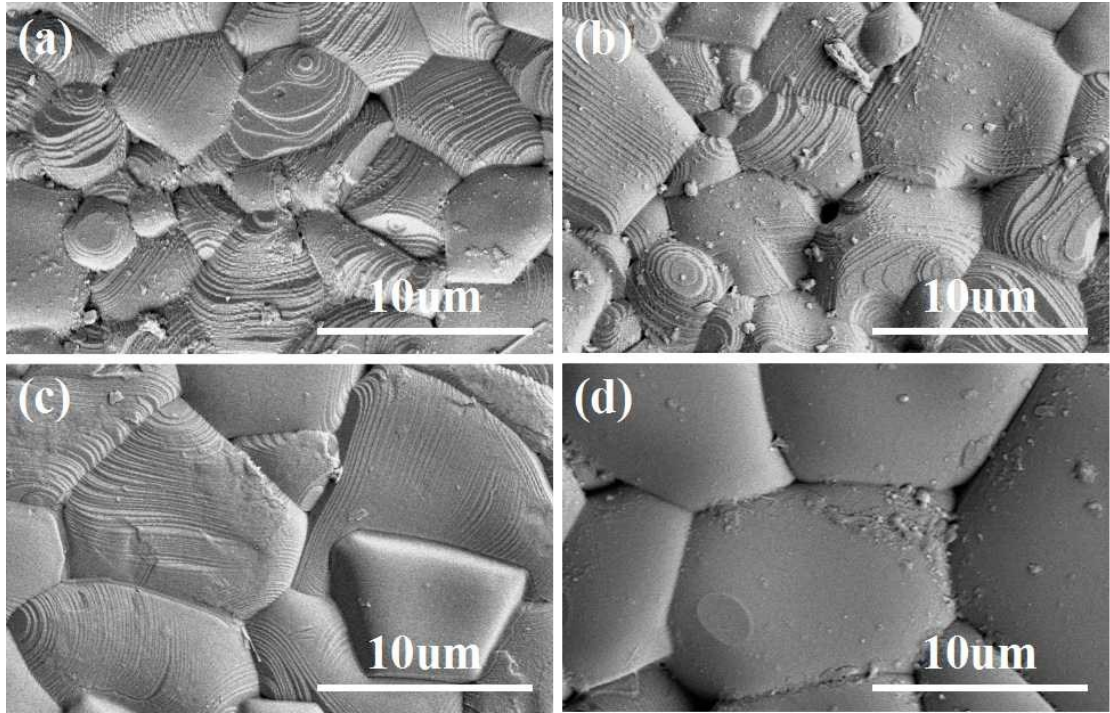


FIG.S1

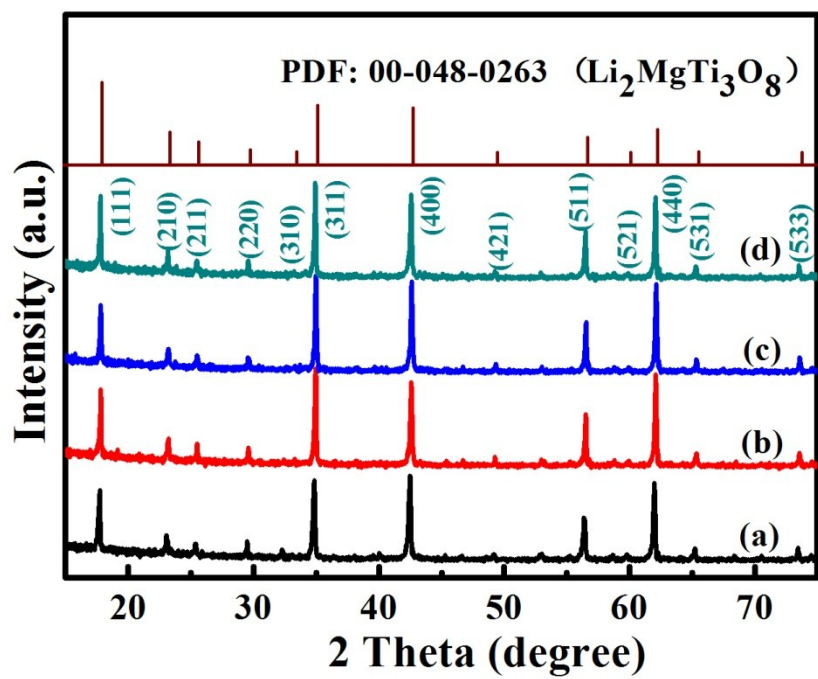


FIG.S2

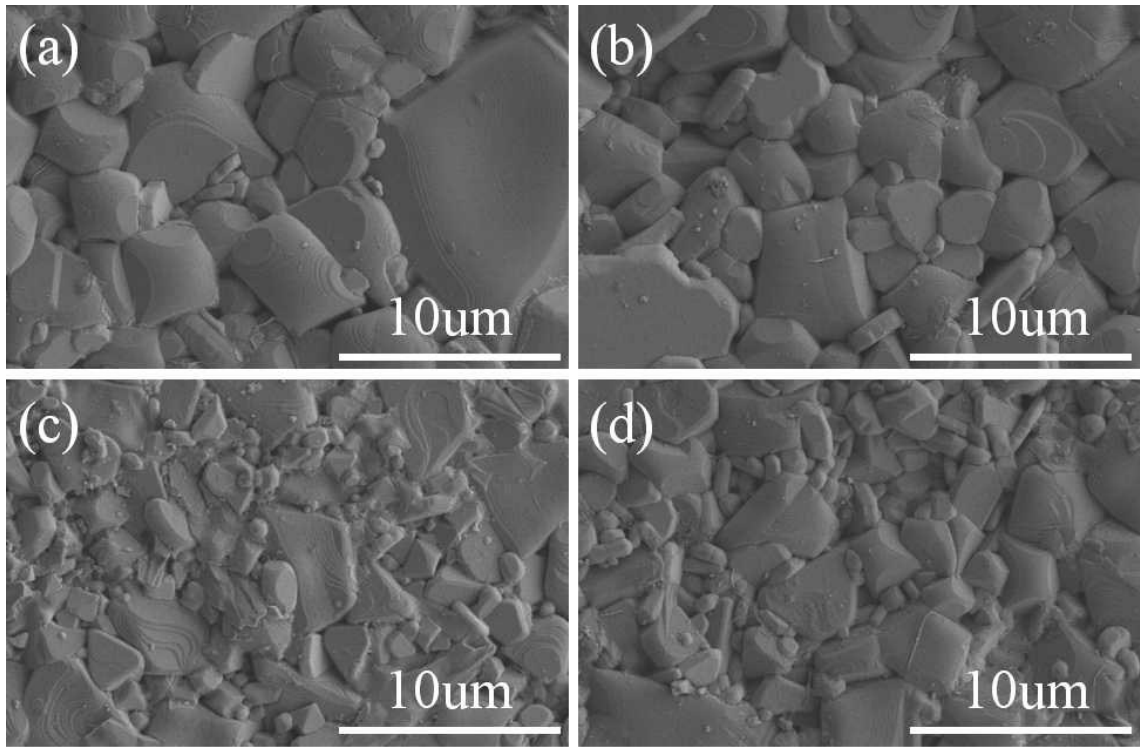


FIG.S3

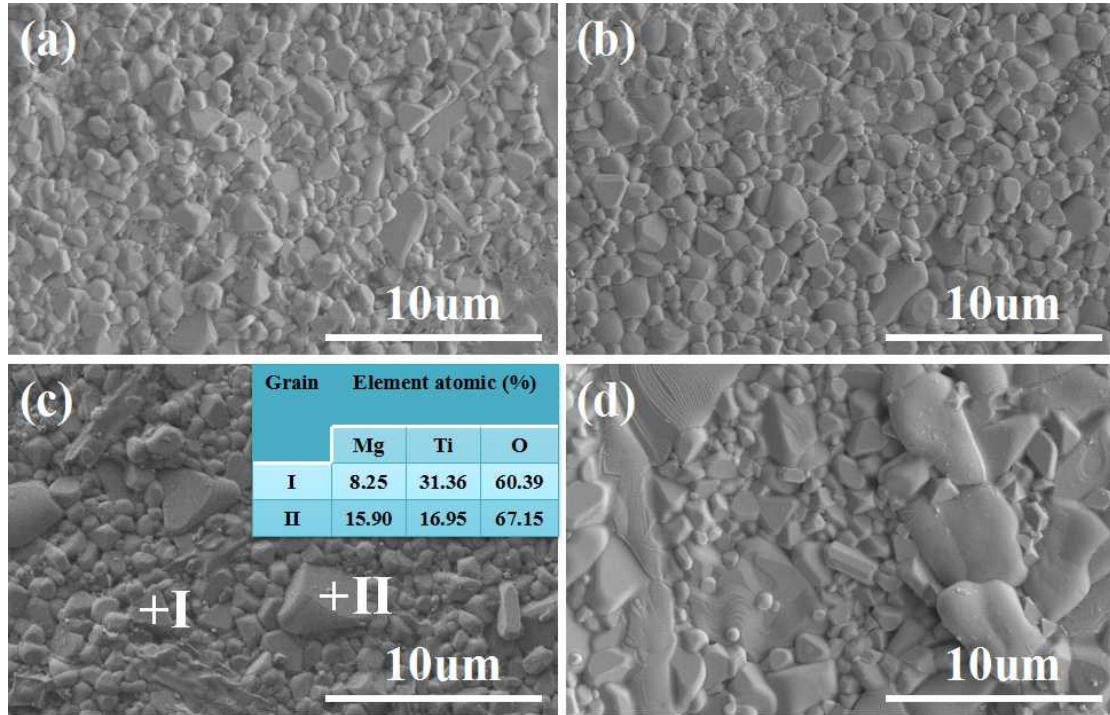


FIG.S4