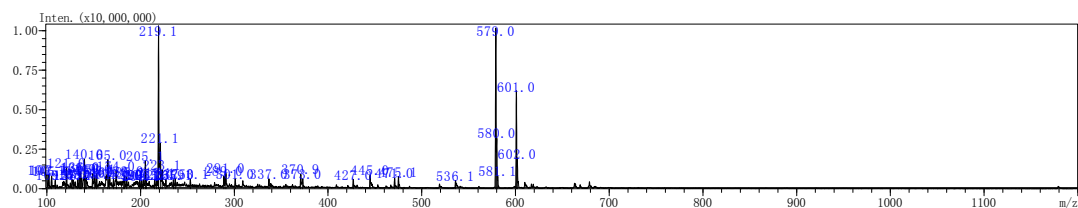
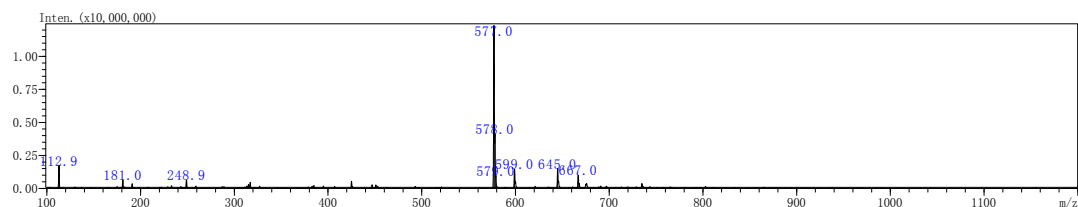


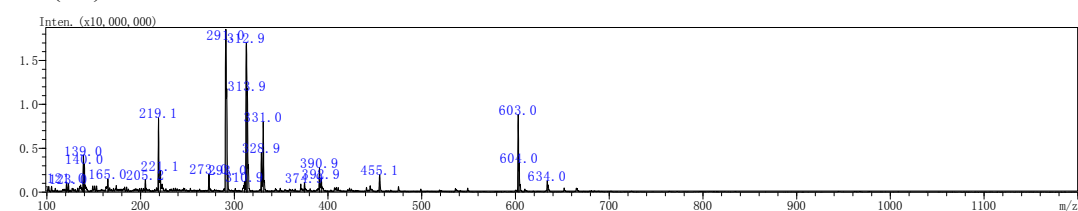
EGC+(tea)



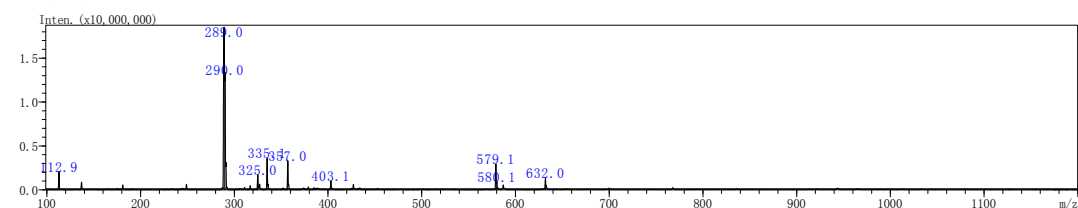
EGC-(tea)



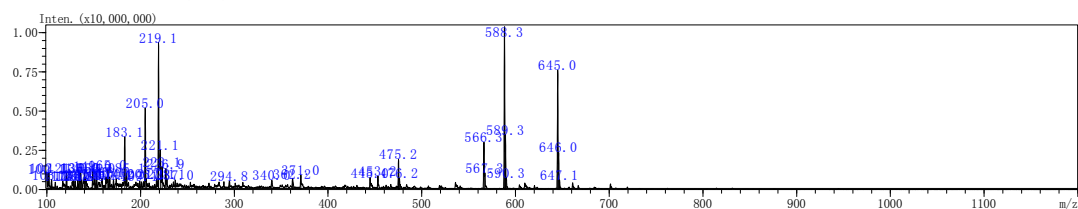
EC+(tea)



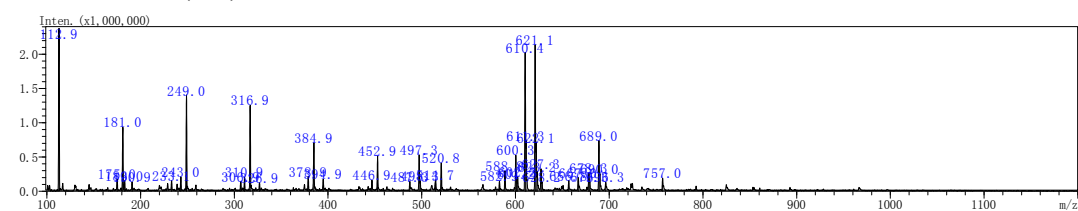
EC-(tea)



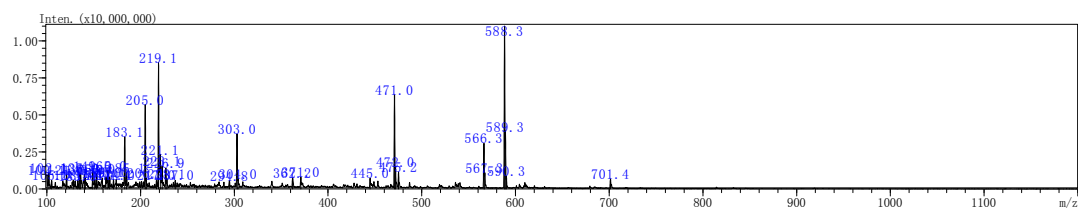
Camellianin-B+(tea)



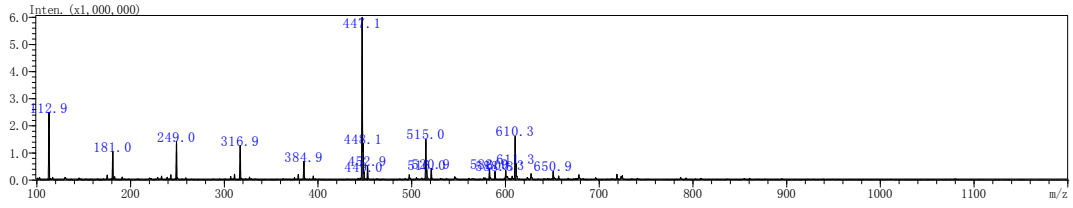
Camellianin -B-(tea)



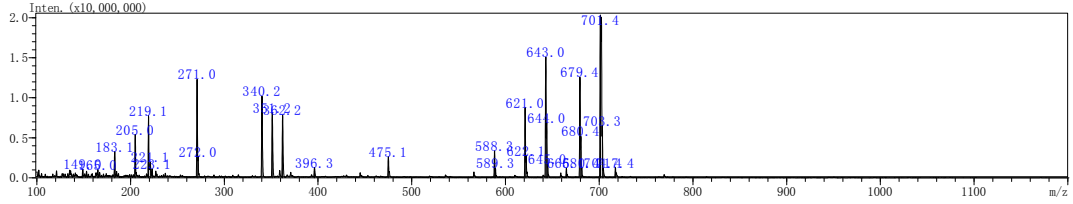
Quercitrin+(tea)



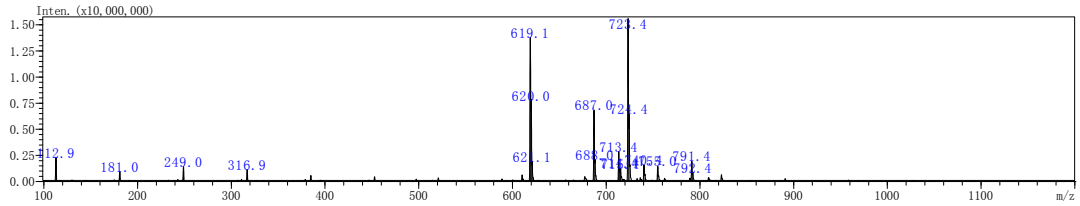
Quercitrin -(tea)



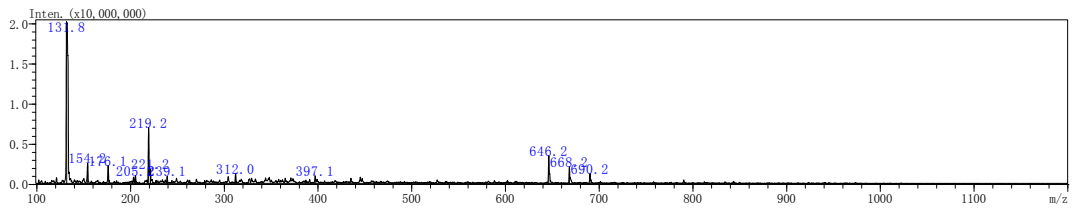
Camellianin -A+(tea)



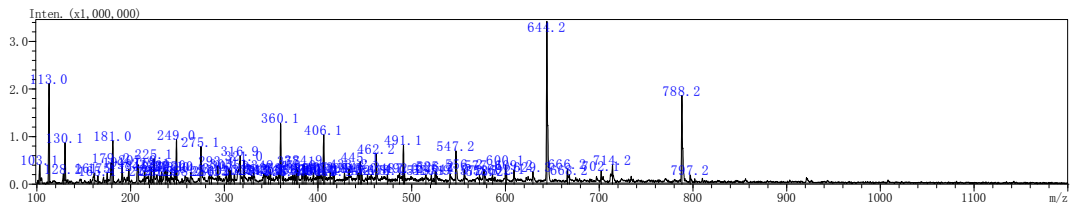
Camellianin -A-(tea)



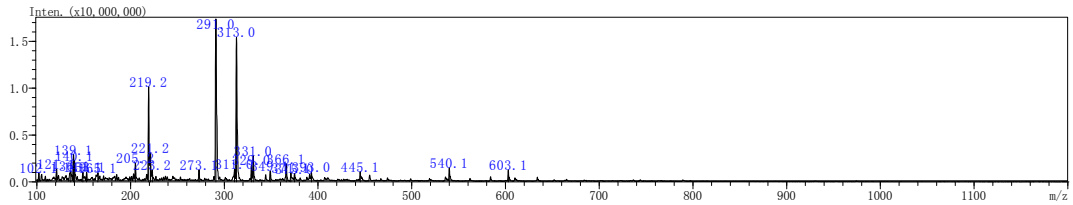
EGC+(gastric fluid)



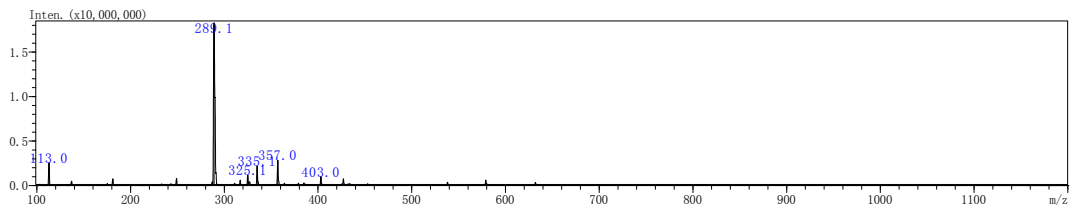
EGC-(gastric fluid)



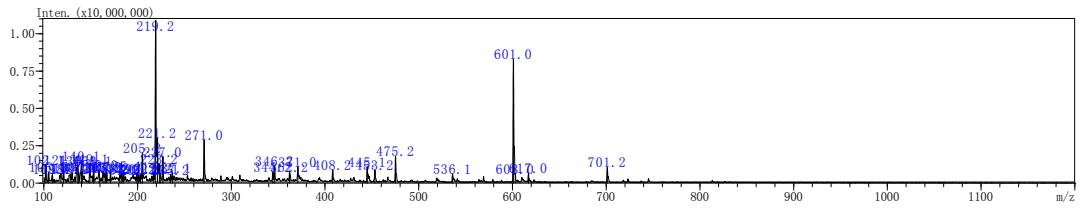
EC+(gastric fluid)



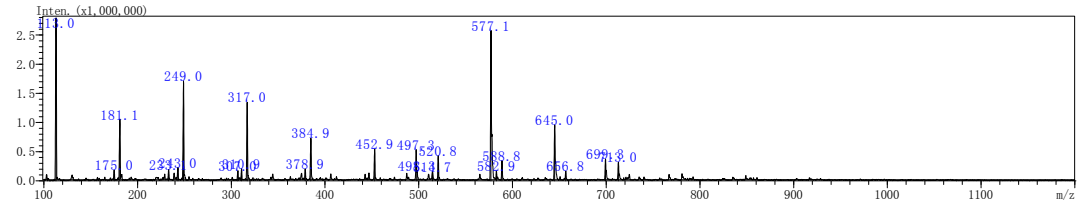
EC-(gastric fluid)



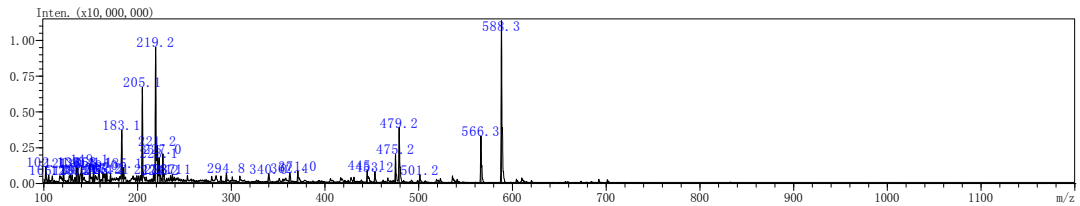
Camellianin -B+(gastric fluid)



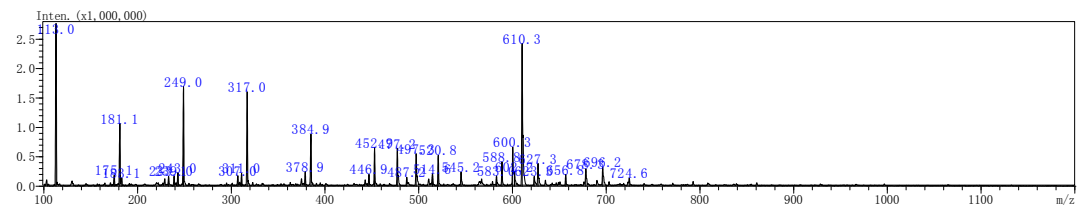
Camellianin -B-(gastric fluid)



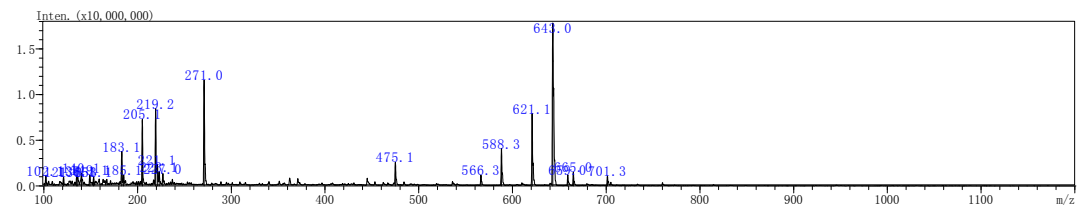
Quercitrin +(gastric fluid)



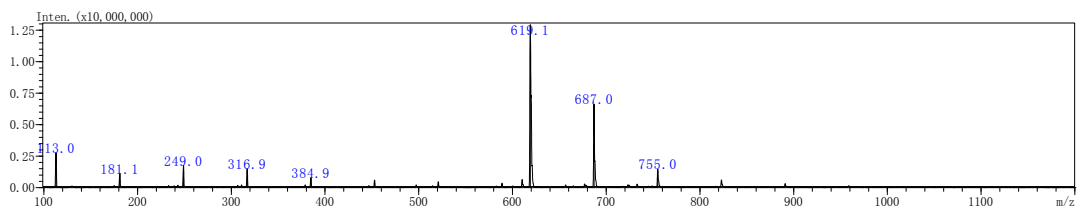
Quercitrin -(gastric fluid)



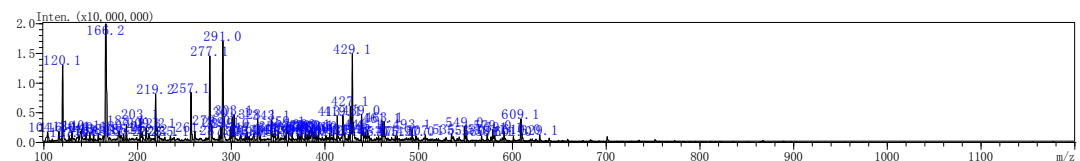
Camellianin -A+(gastric fluid)



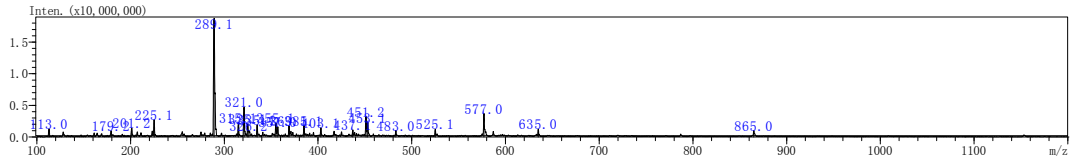
Camellianin -A-(gastric fluid)



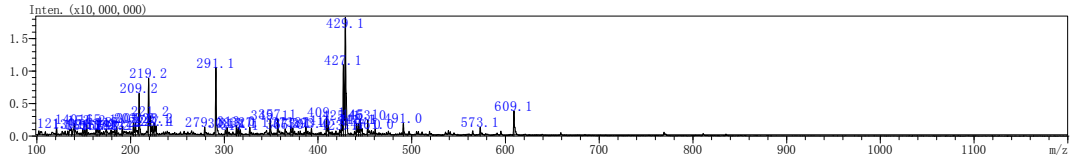
EGC+(intestinal fluid)



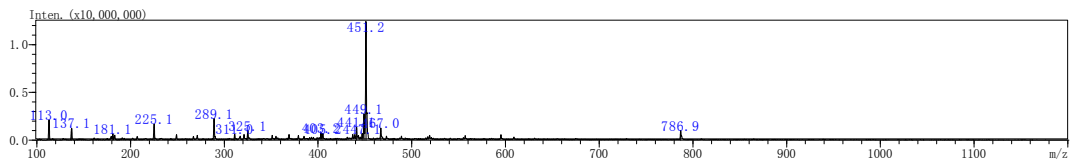
EGC-(intestinal fluid)



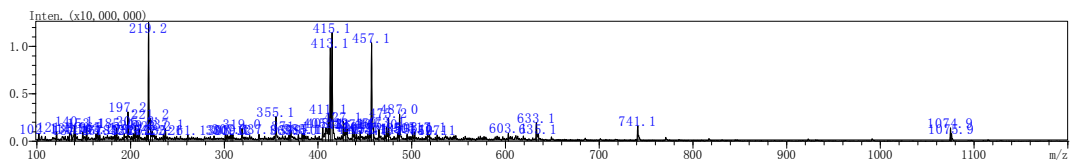
EC+(intestinal fluid)



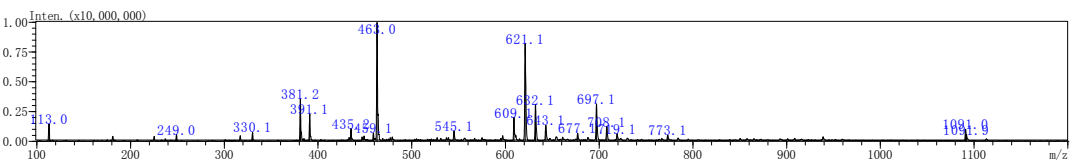
EC-(intestinal fluid)



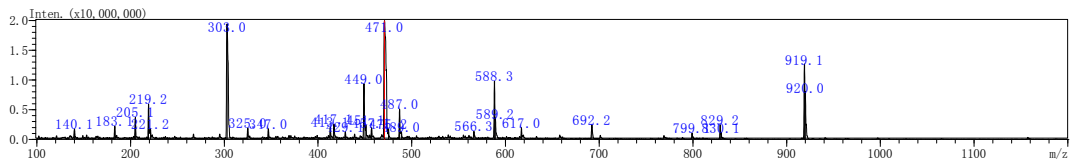
Camellianin -B+(intestinal fluid)



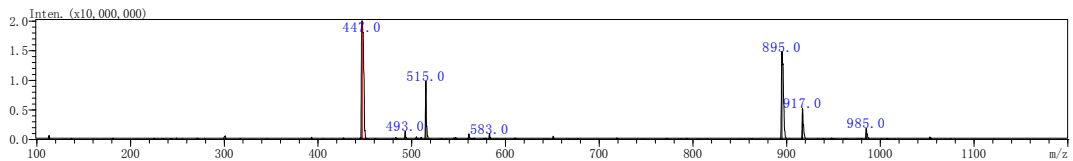
Camellianin -B-(intestinal fluid)



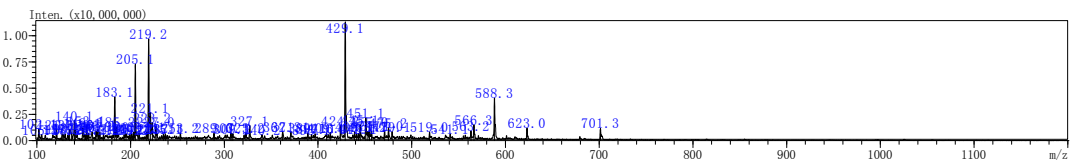
Quercitrin +(intestinal fluid)



Quercitrin -(intestinal fluid)



Camellianin -A+(intestinal fluid)



Camellianin -A-(intestinal fluid)

