

Supporting Information

Design and preparation of macroporous polymer particles with
polydopamine coating and potential application in enrichment of insulin

Hao Wang^{a,b}, Zihao Qin^c, Yi Liu^{a,d}, Xiaoting Li^{a,b}, Jianfei Liu^{a,d},

Yongfeng Liu^{a,d*}, Dongdong Huang^{a,e}, Duolong Di^{a,d*}

a. CAS Key Laboratory of Chemistry of Northwestern Plant Resources and Key Laboratory for Natural Medicine of Gansu Province, Lanzhou Institute of Chemical Physics, Chinese Academy of Sciences, Lanzhou 730000, PR China

b. University of Chinese Academy of Sciences, Beijing 100049, PR China

c. Center for Degradable and Flame-Retardant Polymeric Materials, College of Chemistry, State Key Laboratory of Polymer Materials Engineering, National Engineering Laboratory of Eco-Friendly Polymeric Materials (Sichuan), Sichuan University, Chengdu 610064, PR China

d. Centre of Resource Chemical and New Material, Qingdao 266100, PR China

e. College of Chemistry and Chemical Engineering, Northwest Normal University, Lanzhou 730070, PR China



Figure S1. Photographs of PSE4, E1 and E7.

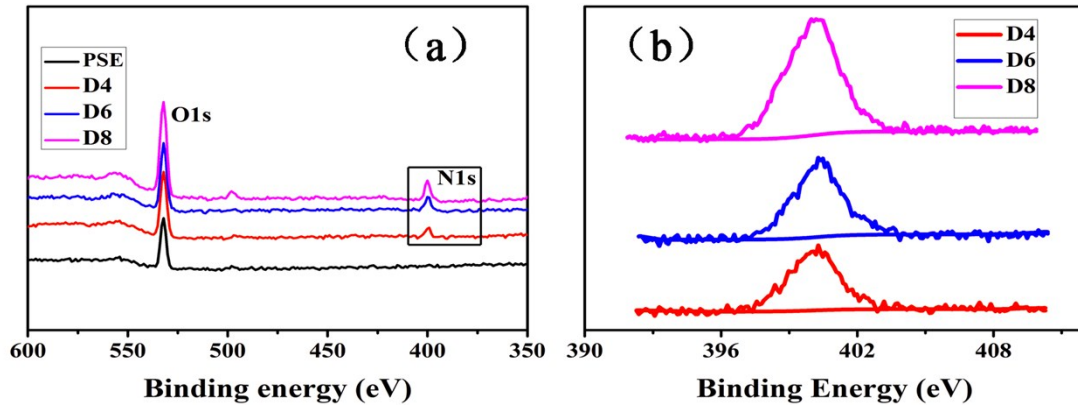


Figure S2. Characteristic C1s XPS curves for PSE and PSEP (a. PSE4 and PSEP for O and N; b. Details of nitrogen).

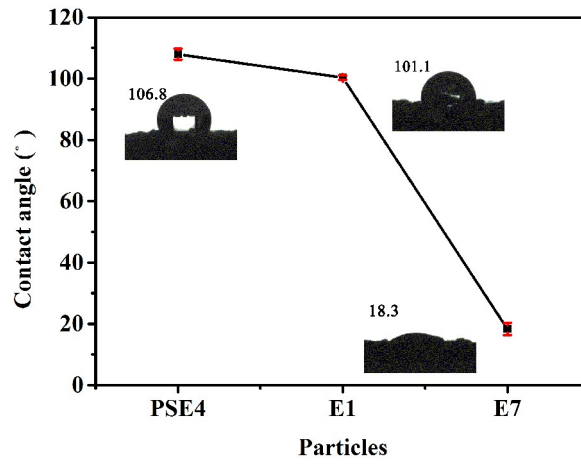


Figure S3. Contact angles of PSE4, E1 and E7.

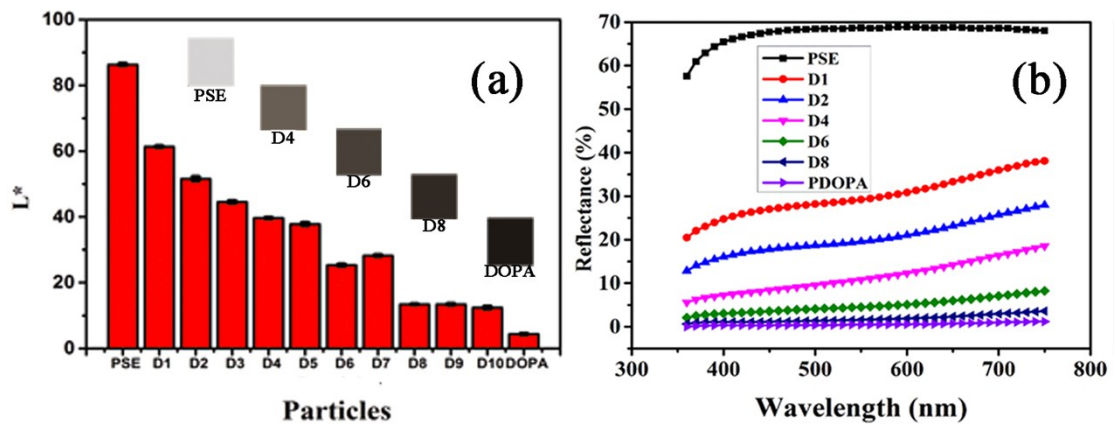


Figure S4. L* values and UV-Vis reflectance spectra of PSE4, PSEPs and PDOPA.

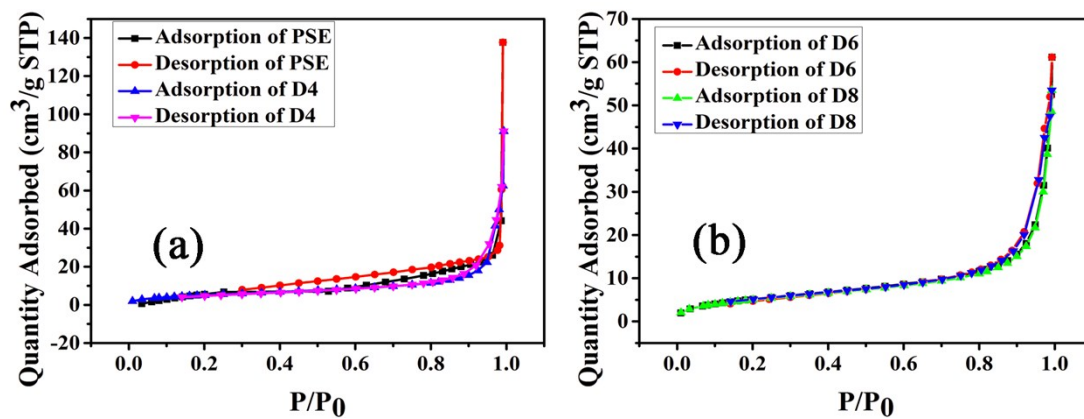


Figure S5. Nitrogen adsorption/desorption at 76 K of the PSE4 and PSEPs.

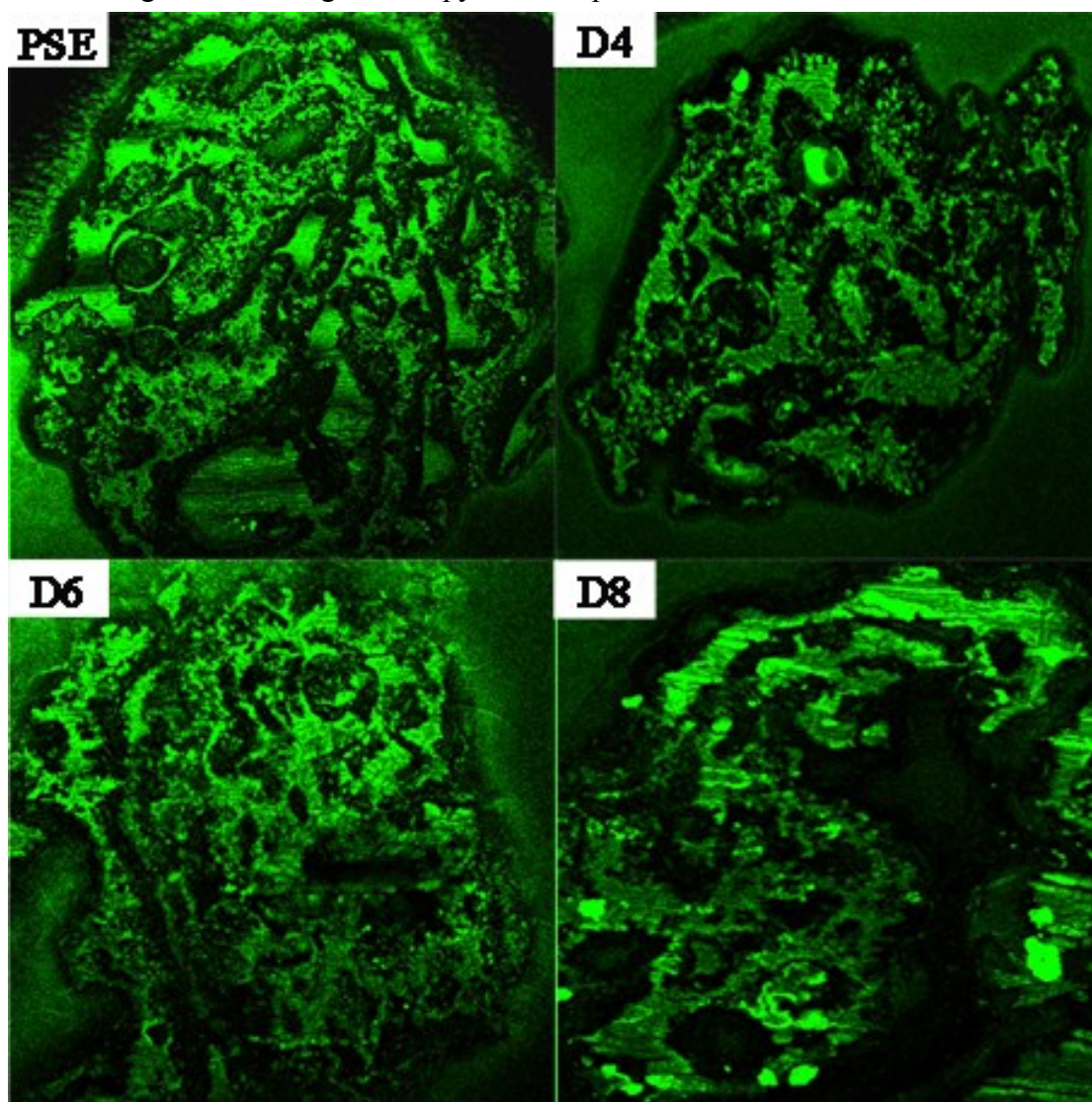


Figure S6. LCSM images of PSE and PSEPs incubated with FITC.

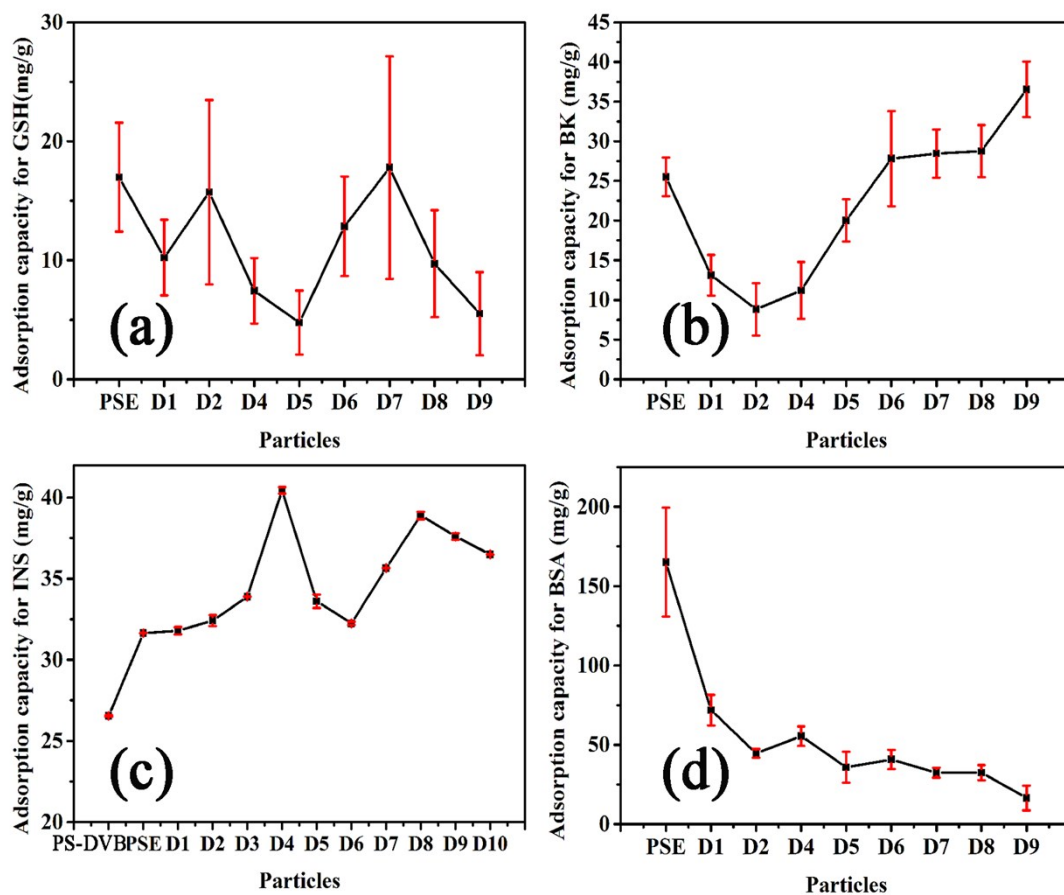


Figure S7. Adsorption capacities for GSH, BK, INS and BSA.

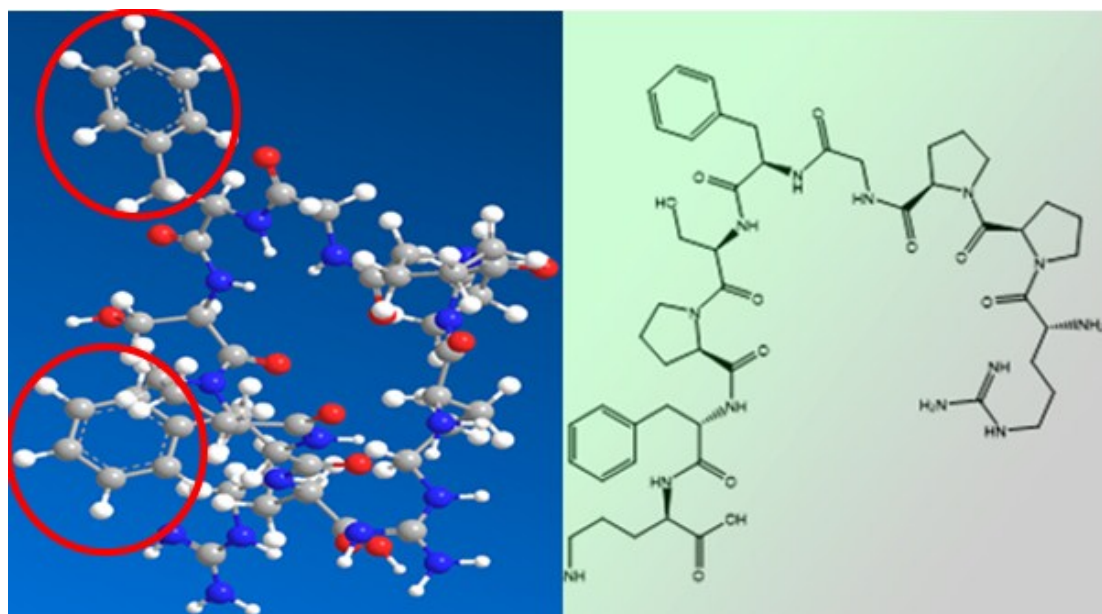


Figure S8. BK molecular formula