

Fig.S1 MRM chromatogram for the mixture of six TCs standard at $50 \mu\text{g L}^{-1}$ in ESI mode. Peak identification: (1) ETC; (2) OTC; (3) TC; (4) DMC; (5) CTC; (6) ATC.

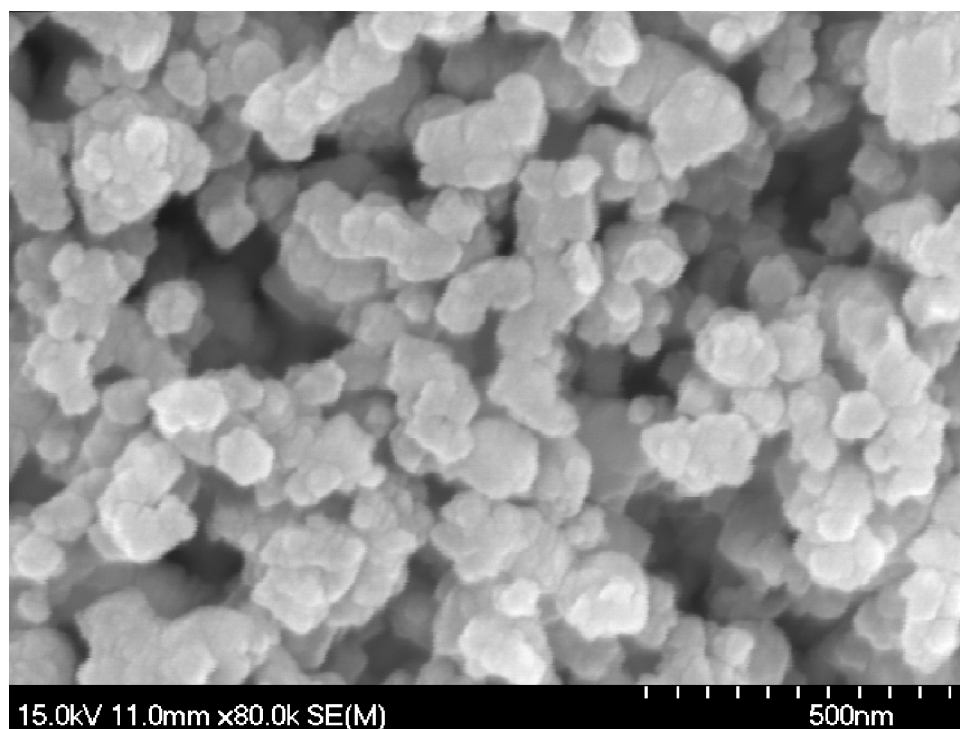


Figure S2 SEM images of GO/nZVI.

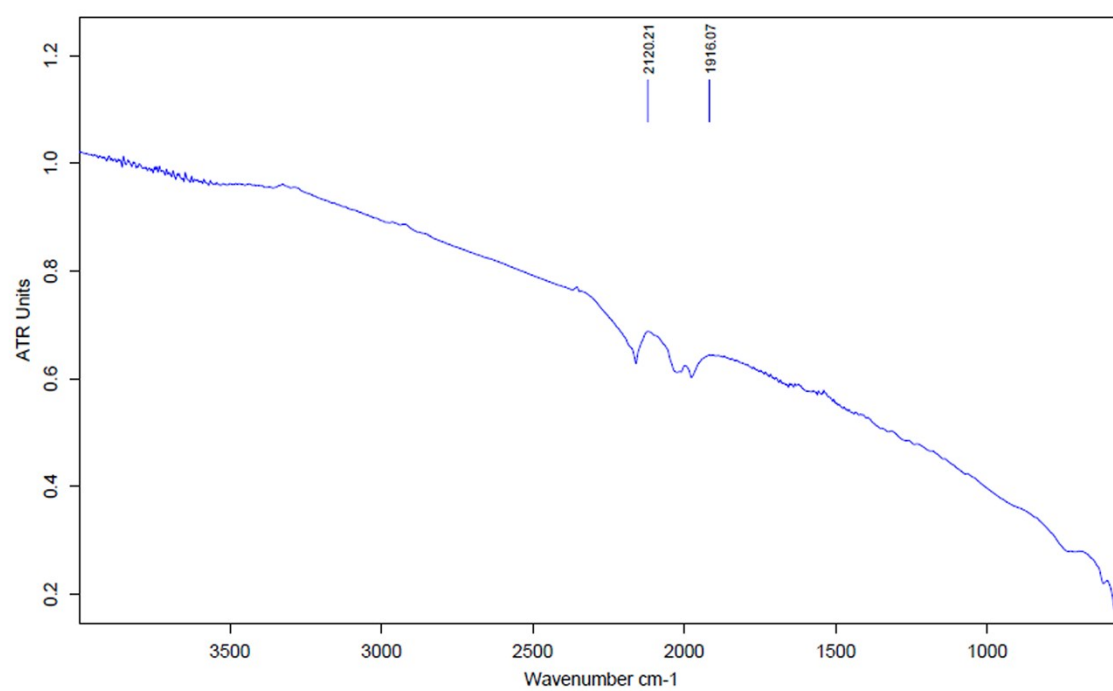


Figure S3 FTIR spectra of GO/nZVI.

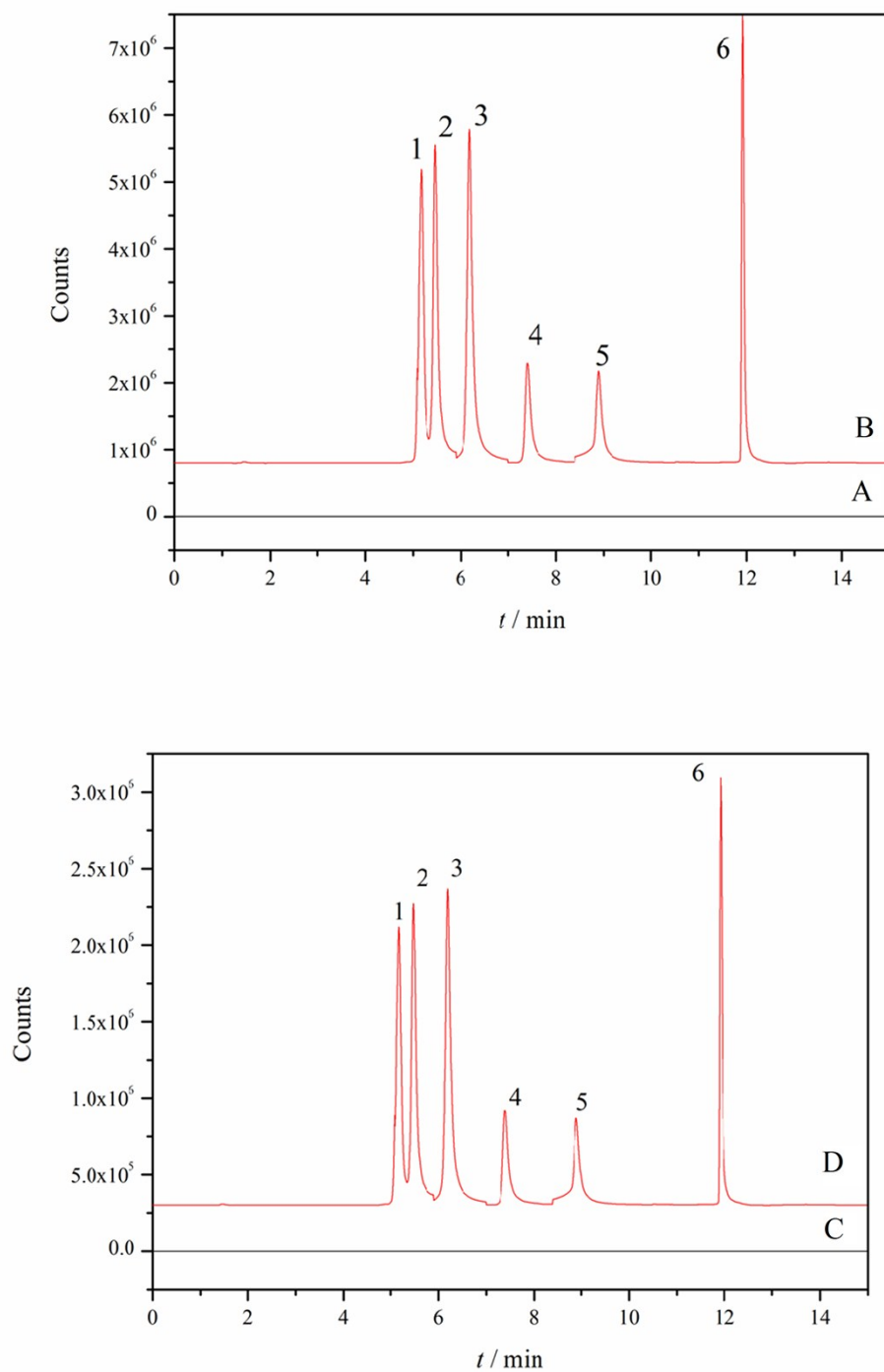


Fig. S4 MRM chromatograms of the blank water sample (A), the blank water sample spiked with 20.0 $\mu\text{g L}^{-1}$ of TCs (B), the blank milk sample (C), and the blank milk sample spiked with 10.0 $\mu\text{g L}^{-1}$ of TCs (D). Peak identification: (1) ETC; (2) OTC; (3) TC; (4) DMC; (5) CTC; (6) ATC.