

Figure S1

SEM enlarged Images of figure 2b to clarify the images of electrospun fibers collected on alignment jig at a location of left-bottom (a), left-top (b), right-top (c), and right-bottom (d) as indicated by dotted circles.

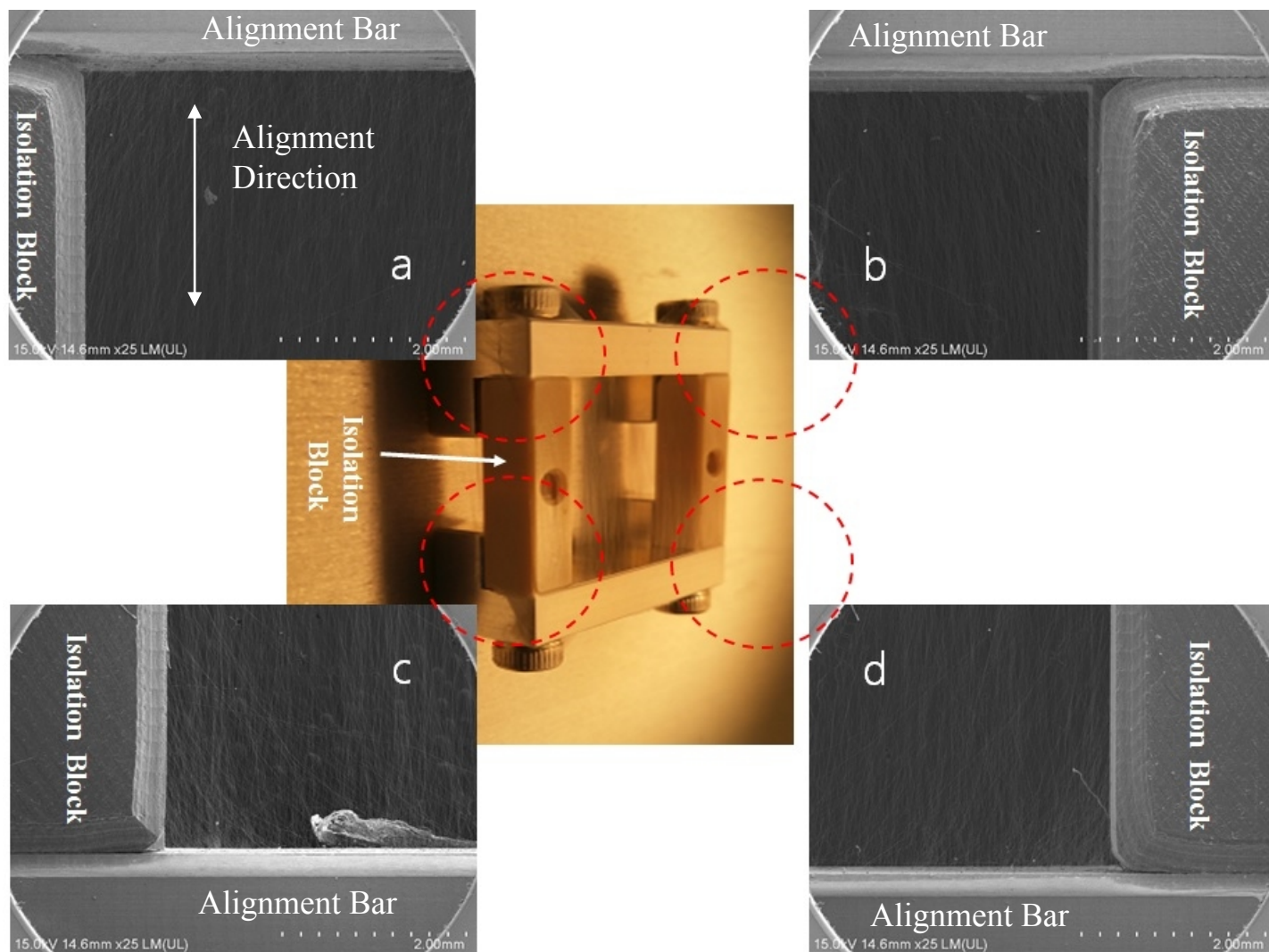
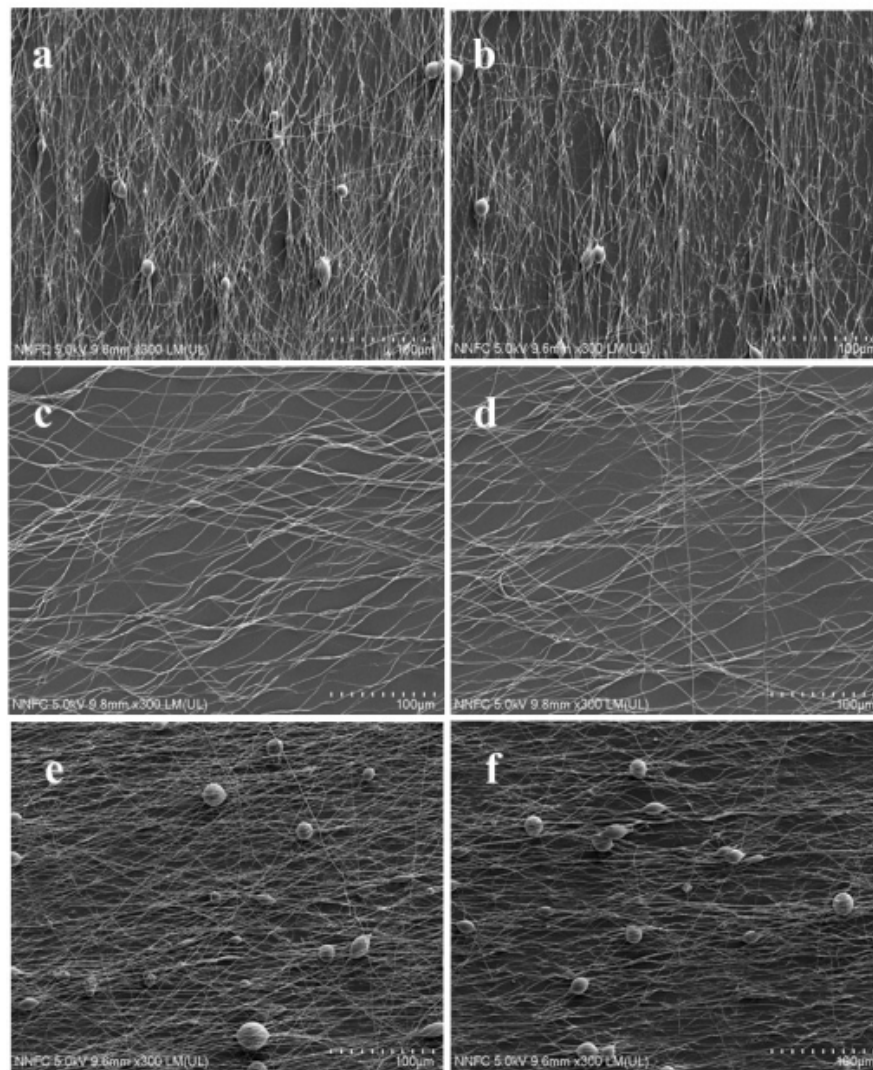


Figure S2 SEM image collections of angle aligned electrospun fibers
(a-b) SEM images of fibers vertically 90° angled to the alignment bar,
(c-d) SEM image of 45° angled fibers, and
(e-f) SEM image of 0° angled fibers, respectively.



Stretching Direction

Figure S3

Model of the basic current pass of the aligned fibers. Current passes the two vertically aligned fibers (black) through the tilted fibers as indicated by red lines.

