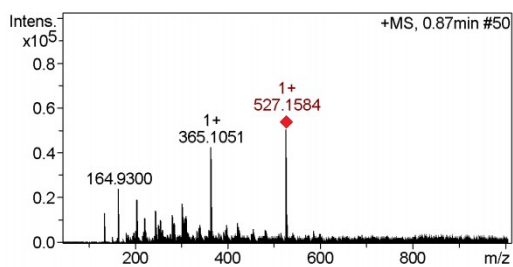
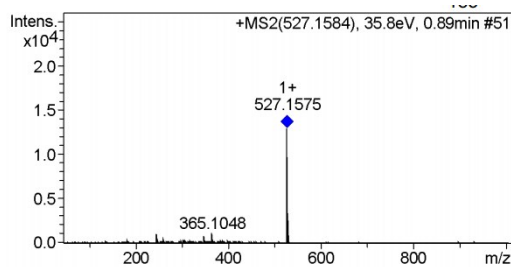


DYDD:

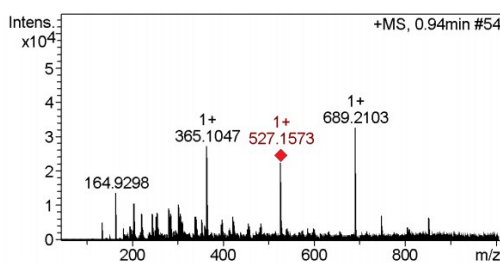


#	m/z	I	I%
1	135.0044	13004	25.7
2	164.9300	24364	48.2
3	205.0677	19210	38.0
4	244.8700	14668	29.0
5	280.8466	12500	24.7
6	302.8285	17404	34.4
7	304.8258	11642	23.0
8	310.8750	11848	23.4
9	365.1051	42678	84.5
10	527.1584	50536	100.0

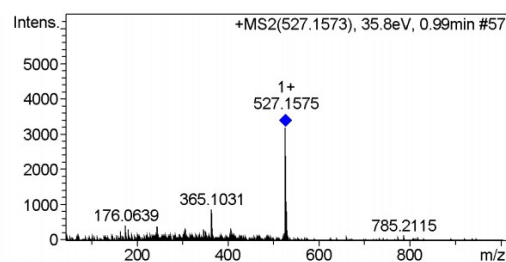


#	m/z	I	I%
1	180.9018	380	2.9
2	244.8686	1016	7.9
3	246.8645	350	2.7
4	260.8457	360	2.8
5	306.8695	300	2.3
6	347.0933	748	5.8
7	365.1048	1124	8.7
8	527.1575	12922	100.0
9	528.1606	3356	26.0
10	529.1616	488	3.8

DDDY:

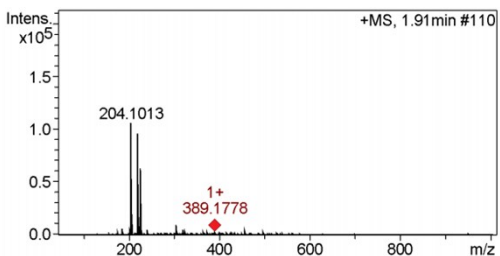


#	m/z	I	I%
1	164.9298	13868	42.4
2	205.0673	10722	32.8
3	222.8877	7778	23.8
4	256.8198	7964	24.4
5	280.8459	9254	28.3
6	302.8285	10580	32.4
7	365.1047	27350	83.6
8	527.1573	22536	68.9
9	689.2103	32696	100.0
10	690.2118	8672	26.5

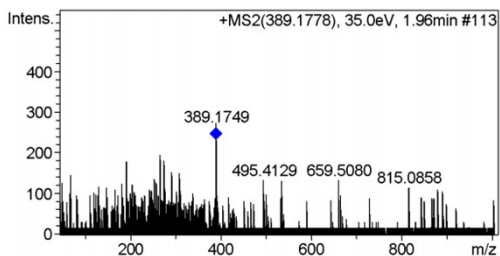


#	m/z	I	I%
1	176.0639	426	13.4
2	244.8694	402	12.6
3	306.8746	342	10.7
4	347.0887	318	10.0
5	365.1031	884	27.7
6	407.1165	348	10.9
7	527.1575	3188	100.0
8	528.1578	1098	34.4
9	528.2055	274	8.6
10	529.1656	478	15.0

NGAQ:

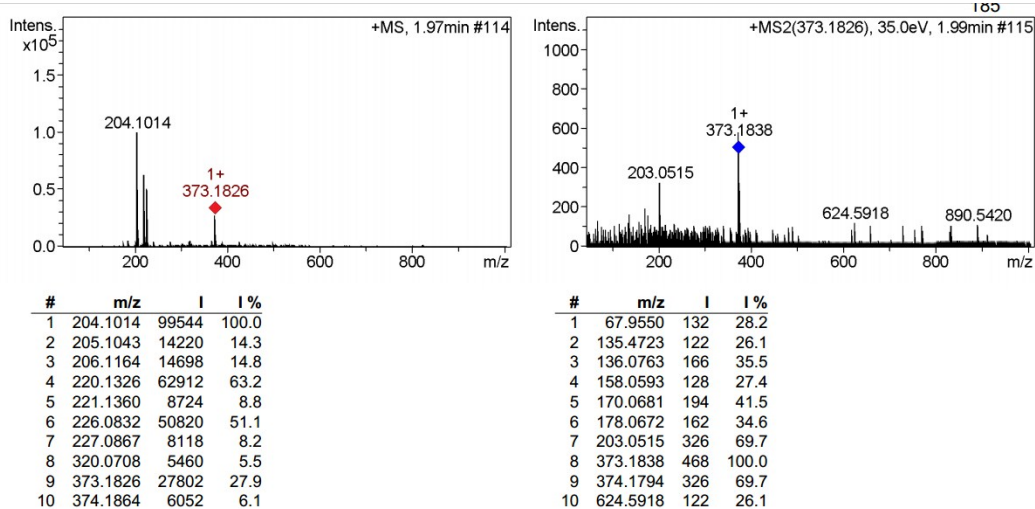


#	m/z	I	I%
1	186.0909	6102	5.8
2	204.1013	105682	100.0
3	205.1048	16292	15.4
4	206.1166	19742	18.7
5	220.1326	95484	90.4
6	221.1357	16402	15.5
7	226.0832	62604	59.2
8	227.0864	8154	7.7
9	305.1561	9764	9.2
10	320.0706	4820	4.6

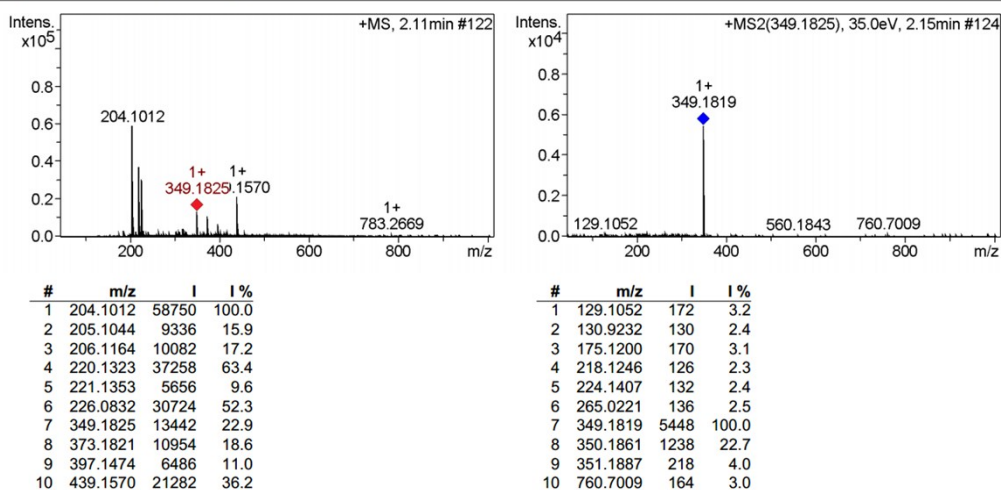


#	m/z	I	I%
1	69.4992	146	63.5
2	192.0676	180	78.3
3	253.1169	138	60.0
4	267.1291	196	85.2
5	275.1329	182	79.1
6	291.3352	154	67.0
7	308.2047	150	65.2
8	389.1749	230	100.0
9	495.4129	134	58.3
10	659.5080	134	58.3

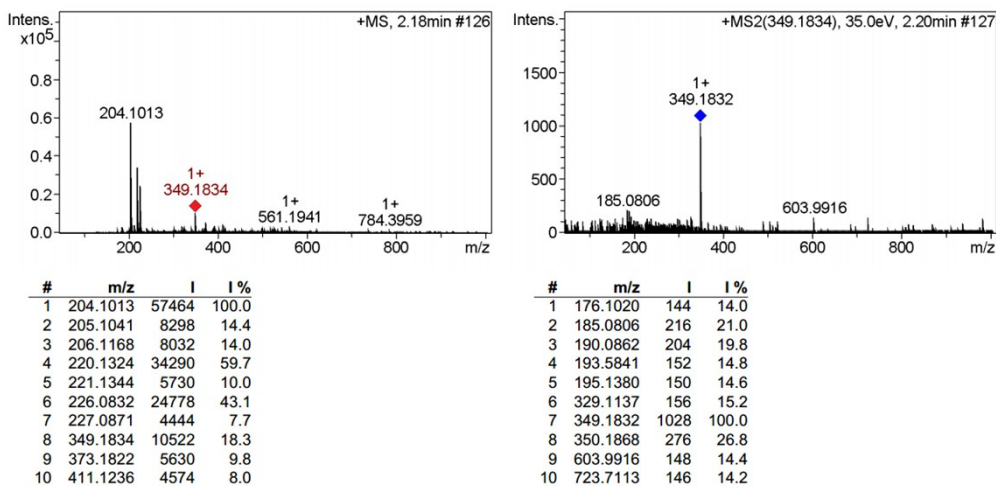
WPA:



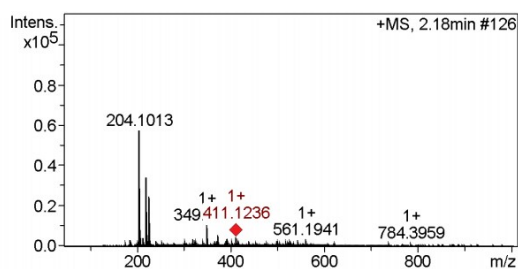
MAK:



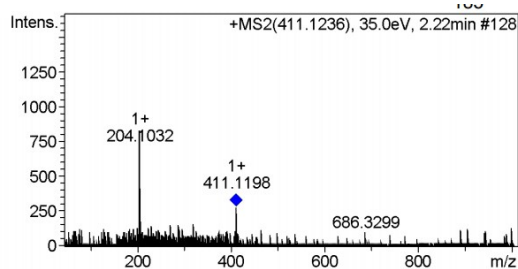
RSS:



WCC:

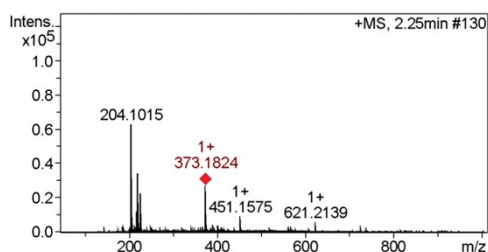


#	m/z	I	I %
1	204.1013	57464	100.0
2	205.1041	8298	14.4
3	206.1168	8032	14.0
4	220.1324	34290	59.7
5	221.1344	5730	10.0
6	226.0832	24778	43.1
7	227.0871	4444	7.7
8	349.1834	10522	18.3
9	373.1822	5630	9.8
10	411.1236	4574	8.0

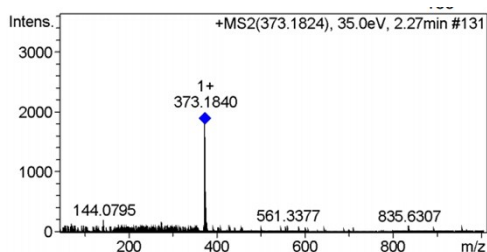


#	m/z	I	I %
1	204.1032	718	100.0
2	205.1021	356	49.6
3	206.1186	182	25.3
4	230.1353	140	19.5
5	271.1170	150	20.9
6	287.1095	148	20.6
7	320.1173	156	21.7
8	411.1198	280	39.0
9	411.1727	134	18.7
10	412.1239	208	29.0

PWA:

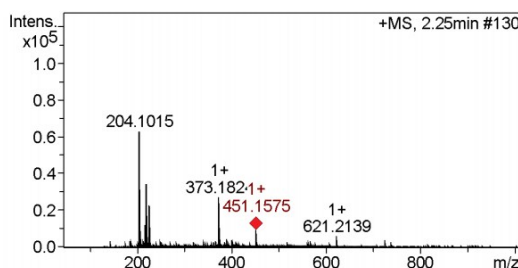


#	m/z	I	I %
1	204.1015	63076	100.0
2	205.1044	9688	15.4
3	206.1167	9026	14.3
4	217.0964	12216	19.4
5	220.0959	7254	11.5
6	220.1324	34378	54.5
7	226.0833	23218	36.8
8	373.1824	27156	43.1
9	451.1575	9268	14.7
10	621.2139	5980	9.5

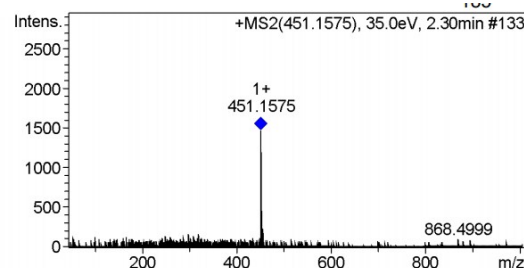


#	m/z	I	I %
1	56.7075	120	6.8
2	71.3476	140	7.9
3	144.0795	212	11.9
4	176.8644	124	7.0
5	275.0913	178	10.0
6	341.0998	120	6.8
7	373.1840	1776	100.0
8	374.1881	464	26.1
9	375.1908	204	11.5
10	377.1411	182	10.2

NQCS:

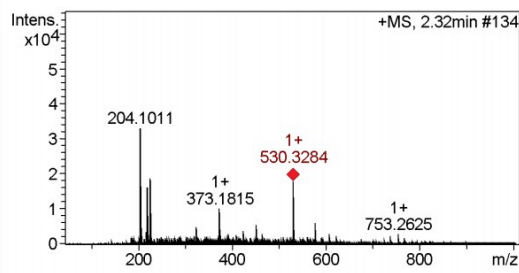


#	m/z	I	I %
1	204.1015	63076	100.0
2	205.1044	9688	15.4
3	206.1167	9026	14.3
4	217.0964	12216	19.4
5	220.0959	7254	11.5
6	220.1324	34378	54.5
7	226.0833	23218	36.8
8	373.1824	27156	43.1
9	451.1575	9268	14.7
10	621.2139	5980	9.5

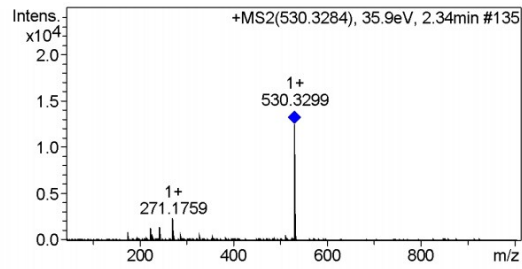


#	m/z	I	I %
1	167.1380	132	9.0
2	249.1185	136	9.3
3	299.1395	164	11.2
4	309.5139	142	9.7
5	319.1355	170	11.6
6	451.1575	1466	100.0
7	452.1649	538	36.7
8	453.1387	154	10.5
9	453.1798	180	12.3
10	455.1519	236	16.1

ERLI:

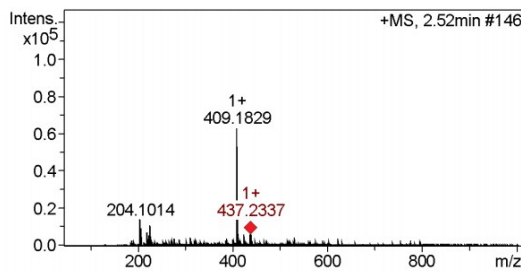


#	m/z	I	I %
1	204.1011	33036	100.0
2	206.1169	4614	14.0
3	220.1324	16340	49.5
4	226.0834	18692	56.6
5	324.1048	5000	15.1
6	373.1815	10156	30.7
7	451.1568	5394	16.3
8	530.3284	17918	54.2
9	531.3312	5492	16.6
10	577.1883	6092	18.4

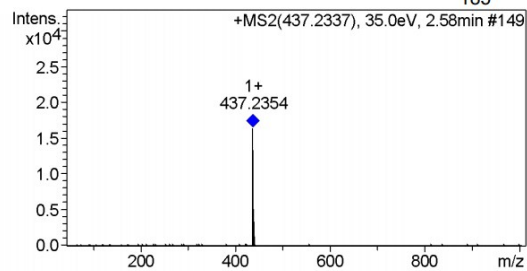


#	m/z	I	I %
1	175.1193	880	7.1
2	225.1237	1308	10.5
3	243.1335	1430	11.5
4	271.1759	2352	18.9
5	272.1778	598	4.8
6	288.2026	478	3.8
7	512.3220	538	4.3
8	530.3299	12470	100.0
9	531.3321	4814	38.6
10	532.3344	700	5.6

AVTF:

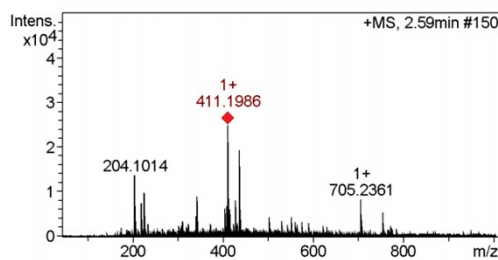


#	m/z	I	I %
1	204.1014	14060	22.3
2	207.1375	9088	14.4
3	220.1322	7066	11.2
4	226.0826	10868	17.3
5	409.1829	62968	100.0
6	410.1863	16862	26.8
7	411.1961	7798	12.4
8	425.1510	5922	9.4
9	437.2337	5882	9.3
10	439.1574	7168	11.4

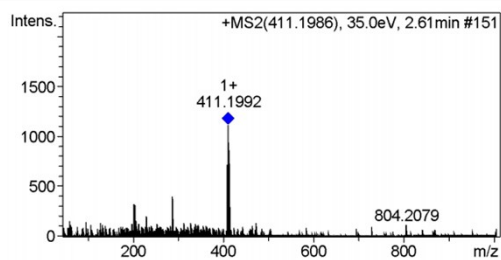


#	m/z	I	I %
1	135.0788	150	0.9
2	319.7529	156	1.0
3	323.1278	172	1.1
4	380.9840	152	0.9
5	437.1456	284	1.7
6	437.2354	16380	100.0
7	438.2379	4172	25.5
8	439.1665	158	1.0
9	439.2416	684	4.2
10	440.2371	154	0.9

TGPH:

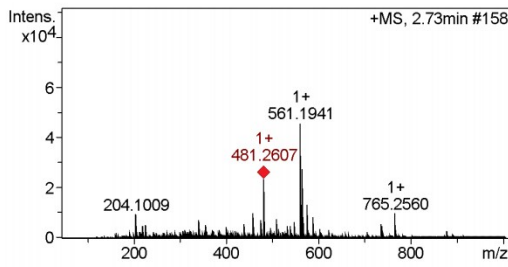


#	m/z	I	I %
1	204.1014	13750	55.2
2	220.1329	7540	30.2
3	226.0831	9836	39.5
4	343.1288	9070	36.4
5	405.1718	6332	25.4
6	409.1822	6896	27.7
7	411.1986	24928	100.0
8	429.1138	8278	33.2
9	437.2348	19326	77.5
10	705.2361	8300	33.3

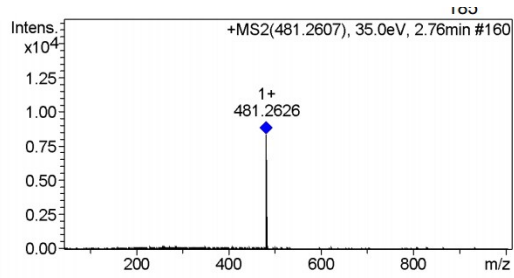


#	m/z	I	I %
1	203.0518	330	29.7
2	204.1016	314	28.2
3	206.1188	160	14.4
4	231.1314	208	18.7
5	287.0496	406	36.5
6	409.1840	720	64.7
7	410.1825	170	15.3
8	411.1992	1112	100.0
9	412.2011	518	46.6
10	413.2159	862	77.5

FLTT:

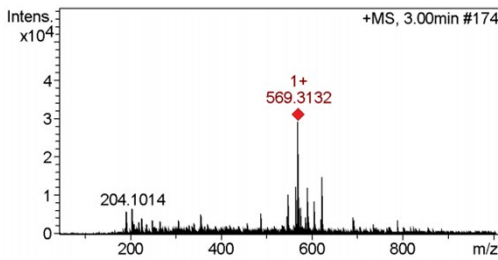


#	m/z	I	I%
1	204.1009	9384	20.6
2	459.2802	9770	21.4
3	481.2607	23424	51.4
4	561.1941	45578	100.0
5	562.1959	13522	29.7
6	565.1548	27352	60.0
7	566.1581	8198	18.0
8	575.1727	13394	29.4
9	587.1368	8460	18.6
10	765.2560	9754	21.4

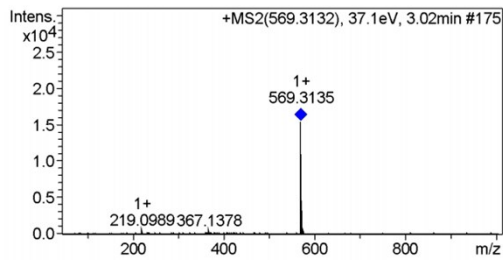


#	m/z	I	I%
1	263.1193	150	1.8
2	289.0192	148	1.8
3	350.0935	152	1.8
4	481.2626	8302	100.0
5	482.1680	176	2.1
6	482.2657	2216	26.7
7	482.3118	150	1.8
8	483.2673	290	3.5
9	483.3094	160	1.9
10	499.7545	148	1.8

REHK:

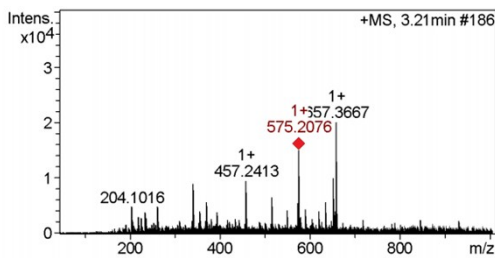


#	m/z	I	I%
1	193.0858	5840	20.0
2	204.1014	6482	22.2
3	547.3315	10362	35.5
4	564.3590	12408	42.5
5	569.3132	29208	100.0
6	570.3183	9594	32.8
7	575.2080	6238	21.4
8	591.2041	12072	41.3
9	605.2206	8646	29.6
10	621.2153	14804	50.7

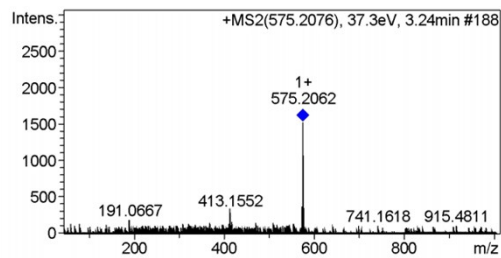


#	m/z	I	I%
1	180.2682	196	1.3
2	219.0989	568	3.7
3	220.1070	212	1.4
4	367.1378	512	3.3
5	569.3135	15448	100.0
6	569.4116	224	1.5
7	570.3202	4740	30.7
8	571.3213	1208	7.8
9	575.2085	472	3.1
10	667.3662	194	1.3

DDYY:

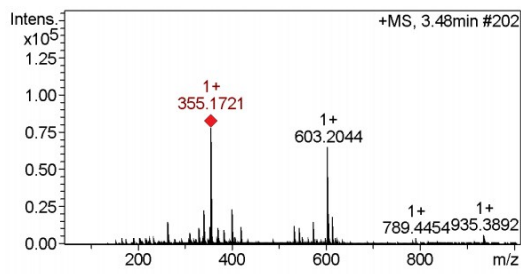


#	m/z	I	I%
1	340.1779	9052	45.0
2	341.1368	5600	27.9
3	371.1484	5684	28.3
4	457.2413	9588	47.7
5	515.2090	6586	32.8
6	573.1937	5618	28.0
7	575.2076	15044	74.9
8	652.4111	10098	50.2
9	657.3667	20096	100.0
10	658.3694	5636	28.0

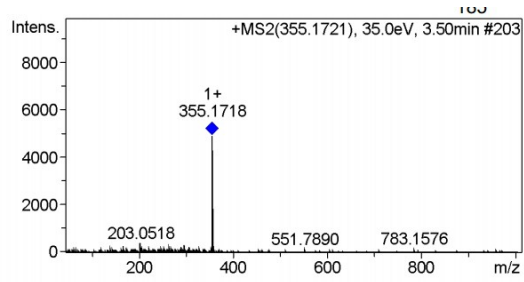


#	m/z	I	I%
1	191.0667	182	12.0
2	413.1552	318	20.9
3	417.1291	164	10.8
4	471.9499	146	9.6
5	510.2667	150	9.9
6	573.2074	372	24.4
7	573.2871	170	11.2
8	575.2062	1522	100.0
9	575.2627	254	16.7
10	576.2188	592	38.9

ERRH:

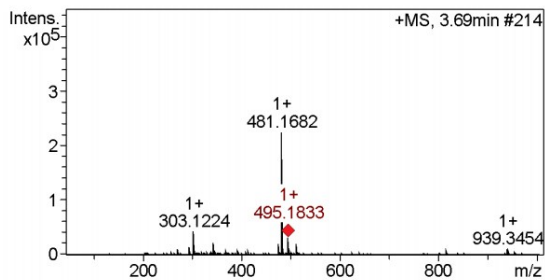


#	m/z	I	I%
1	265.1057	15066	19.4
2	341.1377	22686	29.2
3	355.1721	77686	100.0
4	356.1754	14086	18.1
5	401.1591	23772	30.6
6	533.2021	12390	15.9
7	573.1945	15062	19.4
8	603.2044	65154	83.9
9	604.2079	20536	26.4
10	613.2108	18410	23.7

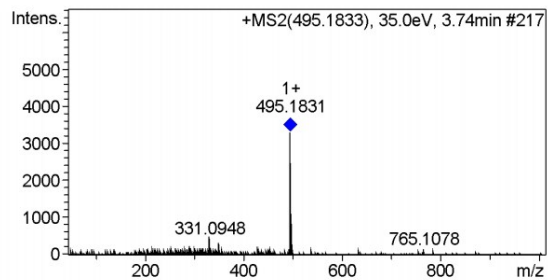


#	m/z	I	I%
1	138.3917	162	3.3
2	167.0732	268	5.5
3	203.0518	372	7.6
4	264.0745	160	3.3
5	289.0885	218	4.4
6	296.9004	300	6.1
7	306.0915	202	4.1
8	355.1718	4902	100.0
9	356.1766	926	18.9
10	357.1778	300	6.1

NRCC:

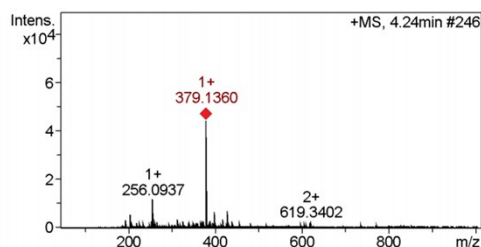


#	m/z	I	I%
1	295.1023	14078	6.3
2	303.1224	41928	18.7
3	343.1150	21896	9.8
4	476.2123	19098	8.5
5	481.1682	224304	100.0
6	482.1712	51324	22.9
7	483.1710	13220	5.9
8	495.1833	30998	13.8
9	497.1447	12752	5.7
10	511.1782	20322	9.1

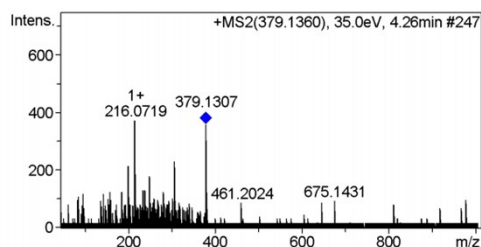


#	m/z	I	I%
1	272.0512	152	4.6
2	317.0830	176	5.3
3	331.0860	414	12.6
4	331.0948	430	13.0
5	349.1286	308	9.3
6	350.1351	244	7.4
7	495.1831	3296	100.0
8	496.1871	1098	33.3
9	497.1663	240	7.3
10	498.1601	178	5.4

MGDG:

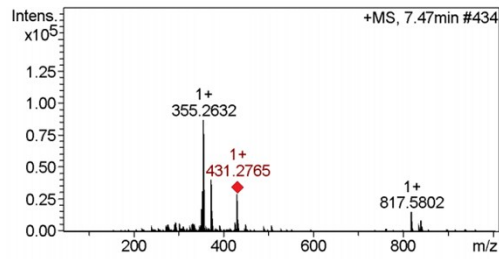


#	m/z	I	I%
1	195.1004	3184	7.2
2	204.1011	5566	12.6
3	256.0937	11962	27.0
4	257.9669	3750	8.5
5	313.0900	3364	7.6
6	379.1360	44274	100.0
7	380.1391	8216	18.6
8	399.1228	6622	15.0
9	417.1539	3614	8.2
10	429.1509	7090	16.0

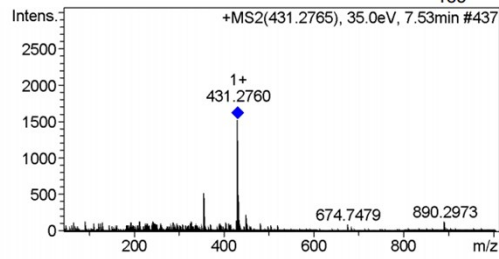


#	m/z	I	I%
1	95.4008	120	32.3
2	158.0930	124	33.3
3	185.0385	124	33.3
4	201.0531	216	58.1
5	216.0719	372	100.0
6	234.0864	132	35.5
7	239.0892	132	35.5
8	249.1013	180	48.4
9	308.0834	230	61.8
10	379.1307	358	96.2

AKRG:

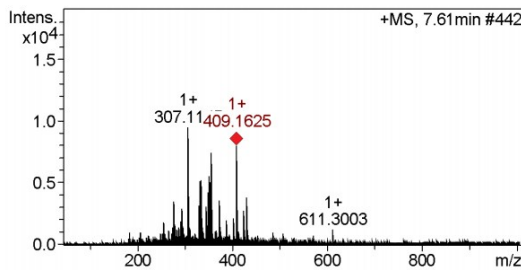


#	m/z	I	I %
1	351.2145	17044	19.7
2	353.2295	31568	36.4
3	355.2632	86690	100.0
4	356.2663	23470	27.1
5	373.2736	41684	48.1
6	374.2777	11112	12.8
7	431.2765	29162	33.6
8	817.5802	15106	17.4
9	818.5853	8272	9.5
10	839.5655	8300	9.6

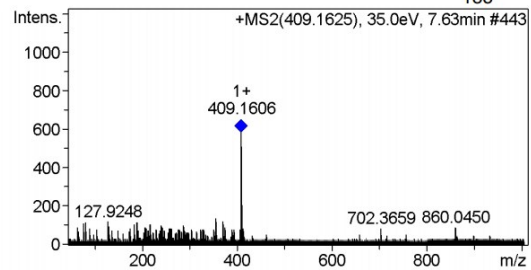


#	m/z	I	I %
1	92.2857	138	9.1
2	214.1681	134	8.8
3	355.2697	158	10.4
4	356.2654	530	34.8
5	429.3182	142	9.3
6	430.3143	210	13.8
7	431.2760	1524	100.0
8	432.2807	500	32.8
9	433.2835	136	8.9
10	449.2852	224	14.7

AMMG:

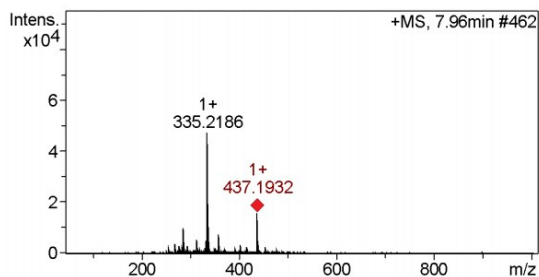


#	m/z	I	I %
1	307.1145	9498	100.0
2	333.2037	5120	53.9
3	335.2192	5262	55.4
4	349.1976	4236	44.6
5	351.2126	5578	58.7
6	353.2299	5108	53.8
7	355.2626	7404	78.0
8	373.2732	3612	38.0
9	409.1625	7984	84.1
10	431.2764	3886	40.9

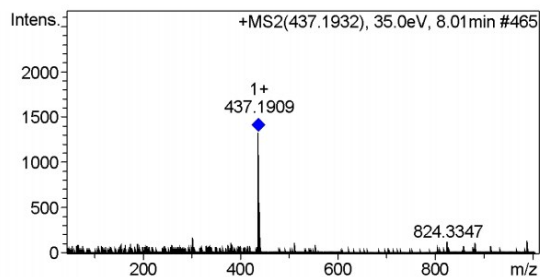


#	m/z	I	I %
1	77.1992	112	19.4
2	81.4190	116	20.1
3	127.9248	124	21.5
4	183.0874	106	18.3
5	189.1377	116	20.1
6	217.0929	104	18.0
7	355.2654	138	23.9
8	371.1879	122	21.1
9	409.1606	578	100.0
10	409.2563	120	20.8

MLCA:



#	m/z	I	I %
1	268.2631	3956	8.4
2	286.1223	9924	21.0
3	313.1042	5564	11.8
4	333.2037	4976	10.5
5	335.2186	47346	100.0
6	336.2225	11340	24.0
7	337.2348	7822	16.5
8	357.2009	7502	15.8
9	437.1932	16060	33.9
10	438.1971	4010	8.5



#	m/z	I	I %
1	303.1253	140	10.5
2	381.2638	114	8.6
3	437.1909	1330	100.0
4	437.2694	138	10.4
5	438.2009	564	42.4
6	439.2031	182	13.7
7	510.6721	114	8.6
8	824.3347	126	9.5
9	882.5862	120	9.0
10	988.3883	138	10.4