

Electronic Supplementary Information (ESI)

**Ring-locking strategy facilitating determination of absolute optical
purity of 2-amino-1-butanol by reverse-phase high-performance liquid
chromatography**

Bo Li #, Jie Zhang #, Bei-Bei Yang, Li Li *, Xiao-Xiao Yang *

Beijing Key Laboratory of Active Substances Discovery and Druggability Evaluation,
Institute of Materia Medica, Chinese Academy of Medical Sciences & Peking Union
Medical College, Beijing 100050, P.R. China.

B. Li and J. Zhang contributed equally to this work.

* Corresponding authors: annaleelin@imm.ac.cn (L. Li.), Tel./Fax: +86-10-63165247;
yangxx@imm.ac.cn (X. X. Yang), Tel.: +86-10-63165251.

The List of Contents

No.	Content	Page
1	Fig. S1 The optimized nineteen conformers (content > 1%) of 3 and equilibrium population of the conformers in methanol	S3
2	Fig. S2 The optimized ten conformers (content > 1%) of 5a and equilibrium population of the conformers in methanol	S4
3	Fig. S3 The optimized seventeen conformers (content > 1%) of 5b and equilibrium population of the conformers in methanol	S5
4	Fig. S4 ¹ H and ¹³ C NMR spectra of 3	S6
5	Fig. S5 ESI-HRMS spectrum of 3	S7
6	Fig. S6 ¹ H and ¹³ C NMR spectra of 4a	S8
7	Fig. S7 ESI-HRMS spectrum of 4a	S9
8	Fig. S8 ¹ H and ¹³ C NMR spectra of 4b	S10
9	Fig. S9 ESI-HRMS spectrum of 4b	S11
10	Fig. S10 ¹ H and ¹³ C NMR spectra of 5a	S12
11	Fig. S11 ESI-HRMS spectrum of 5a	S13
12	Fig. S12 ¹ H and ¹³ C NMR spectra of 5b	S14
13	Fig. S13 ESI-HRMS spectrum of 5b	S15

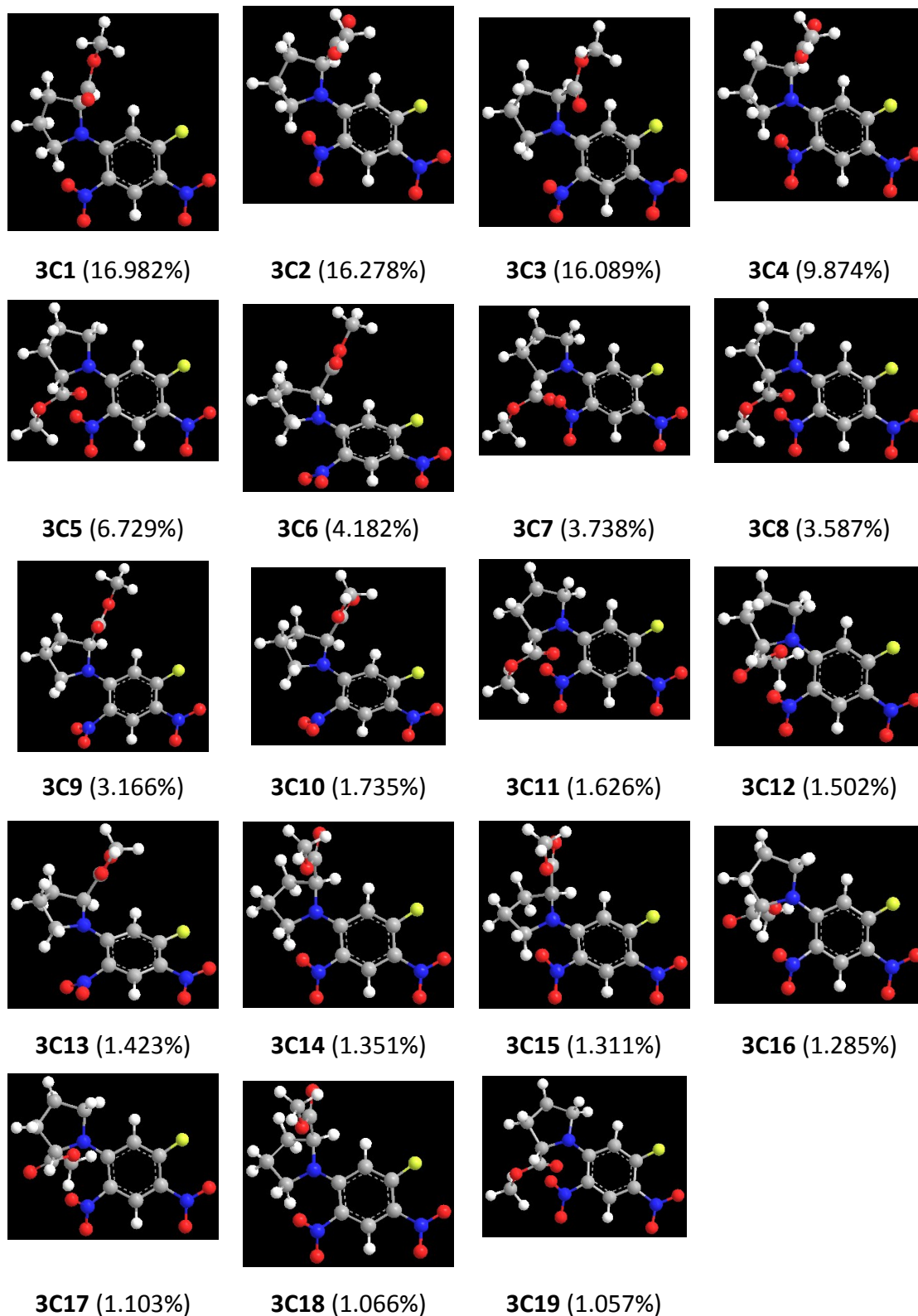


Fig. S1 The optimized nineteen conformers (content > 1%) of **3** and equilibrium population of the conformers.

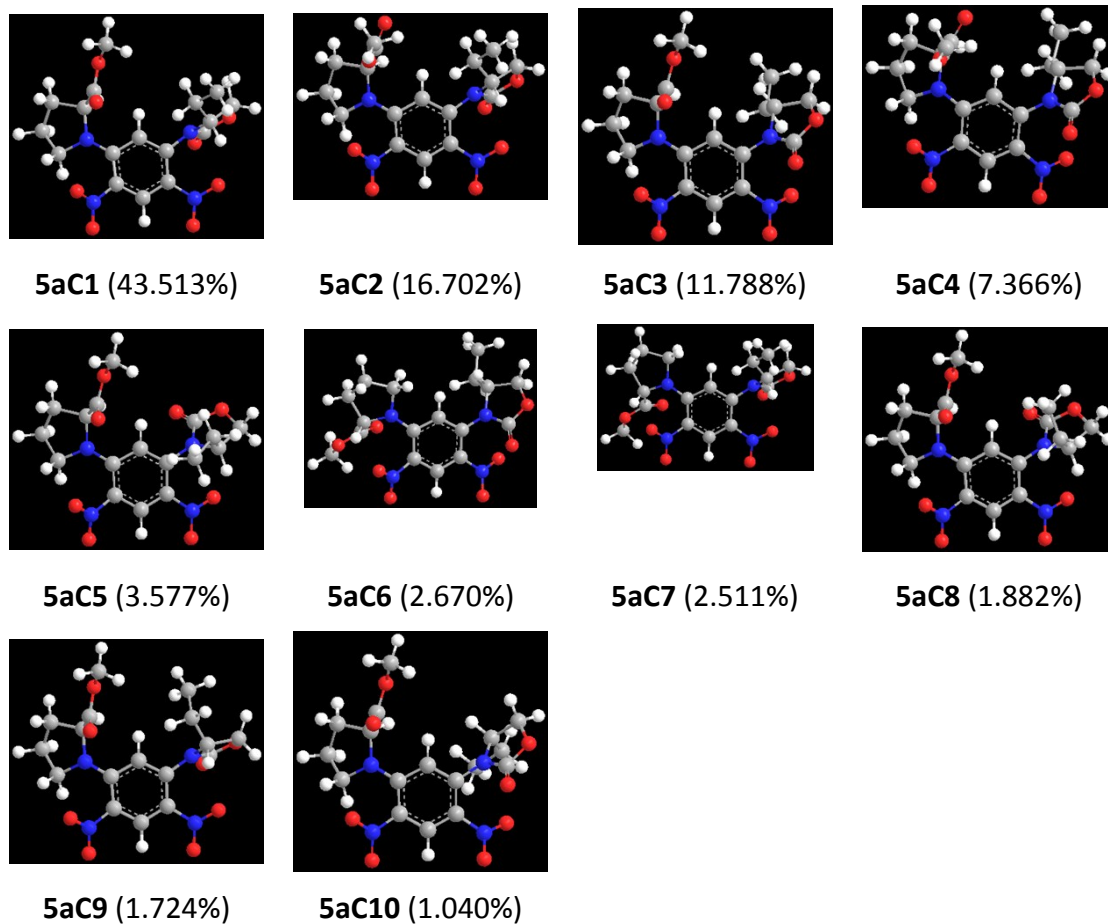


Fig. S2 The optimized ten conformers (content > 1%) of **5a** and equilibrium population of the conformers.

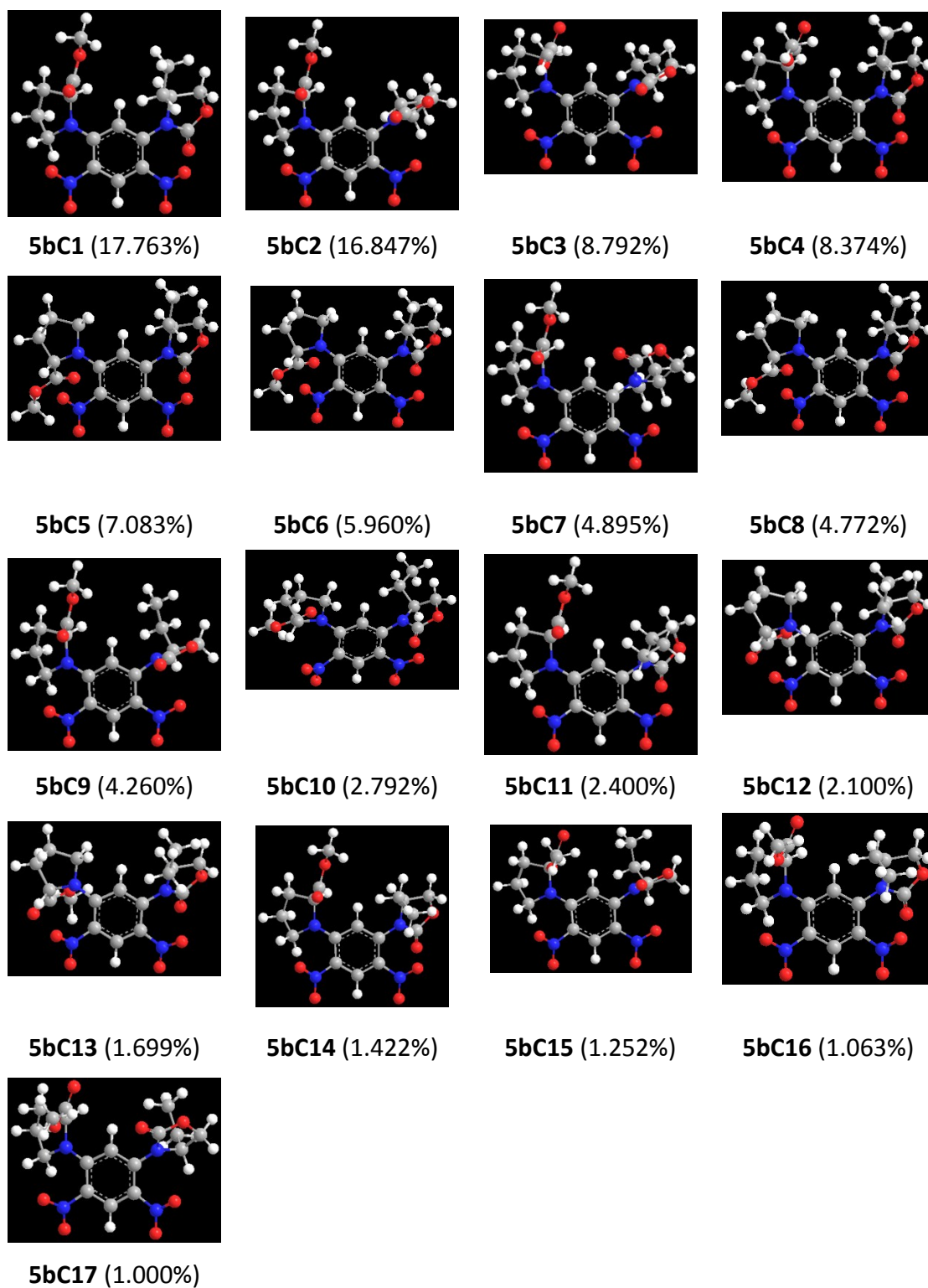


Fig. S3 The optimized seventeen conformers (content > 1%) of **5b** and equilibrium population of the conformers.

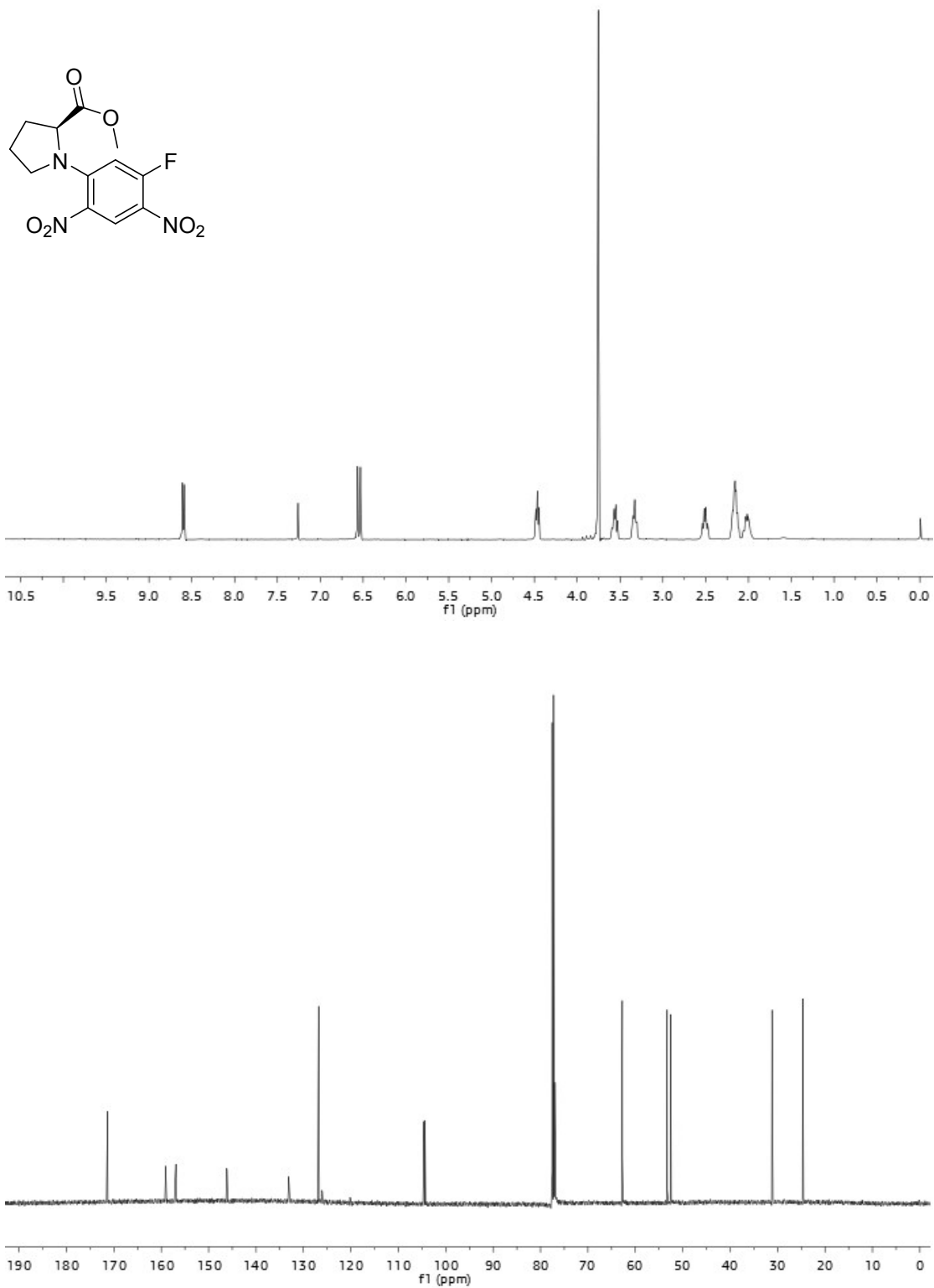


Fig. S4 ^1H and ^{13}C NMR spectra of **3**.

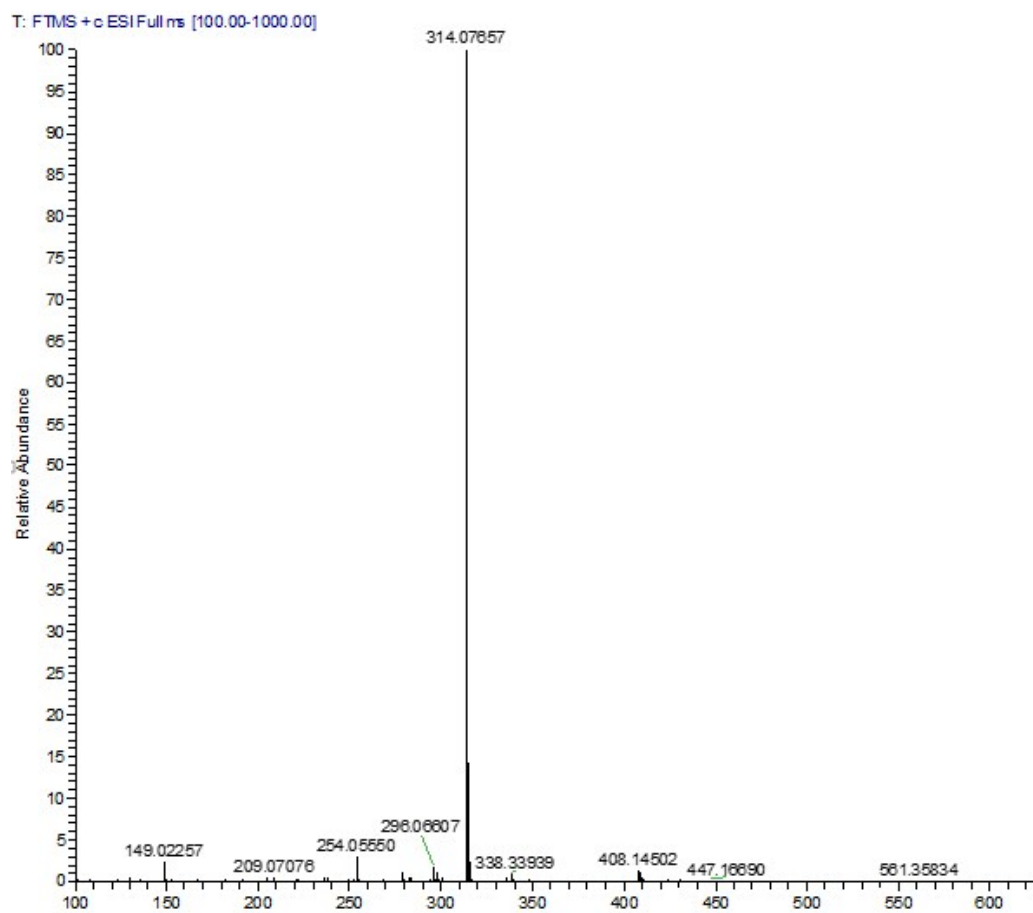


Fig. S5 ESI-HRMS spectrum of **3**.

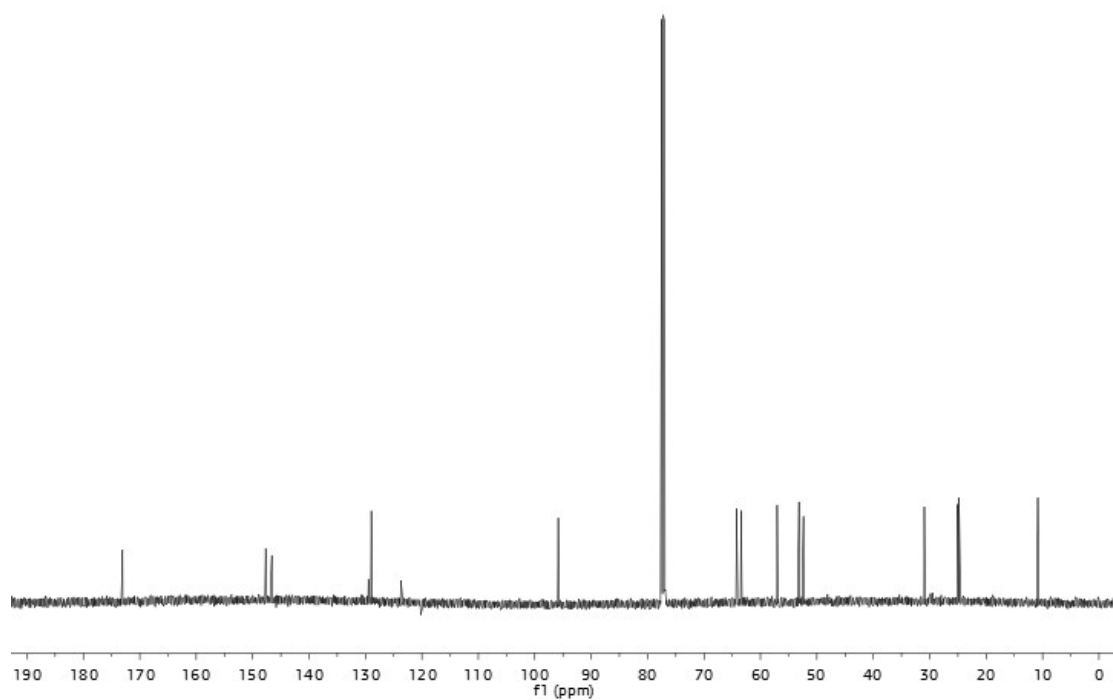
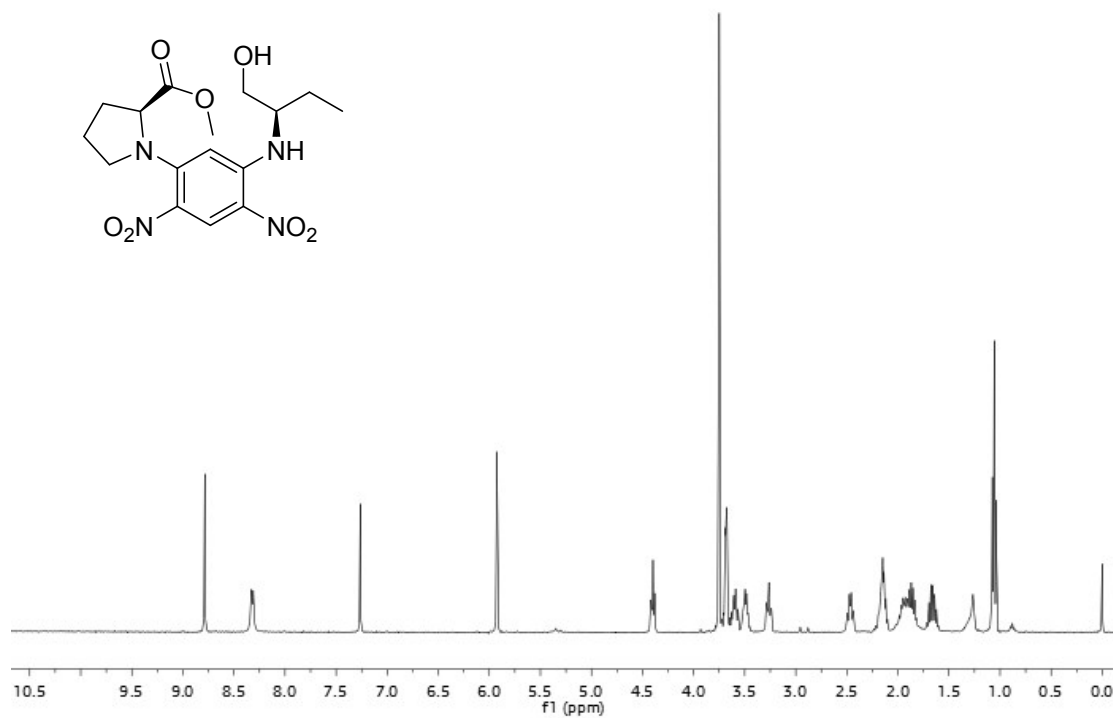


Fig. S6 ¹H and ¹³C NMR spectra of 4a.

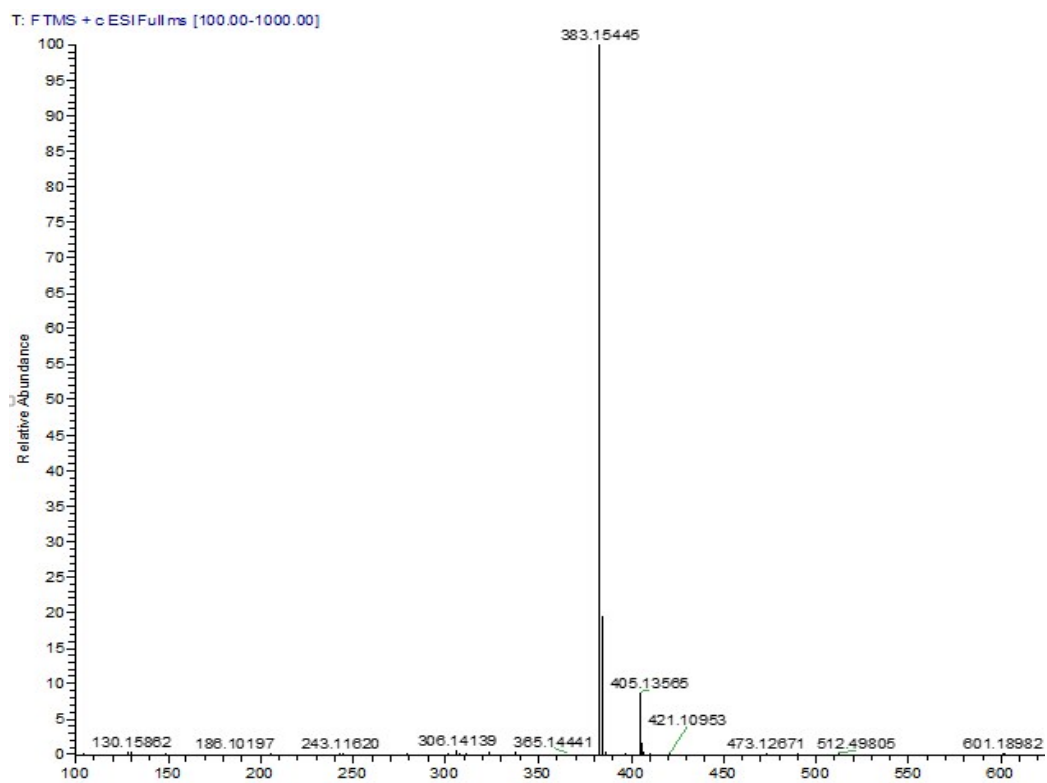


Fig. S7 ESI-HRMS spectrum of **4a**.

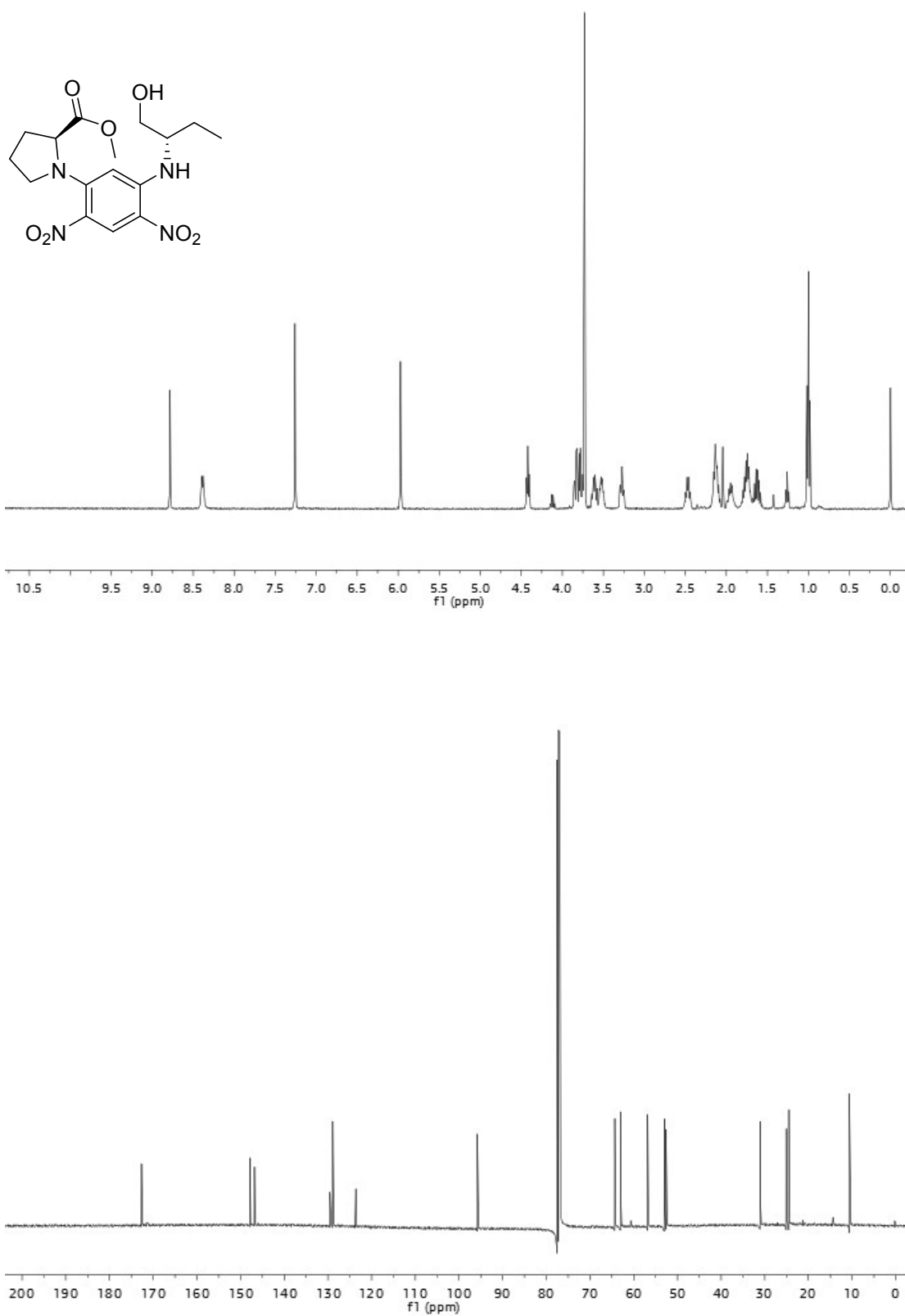


Fig. S8 ^1H and ^{13}C NMR spectra of **4b**.

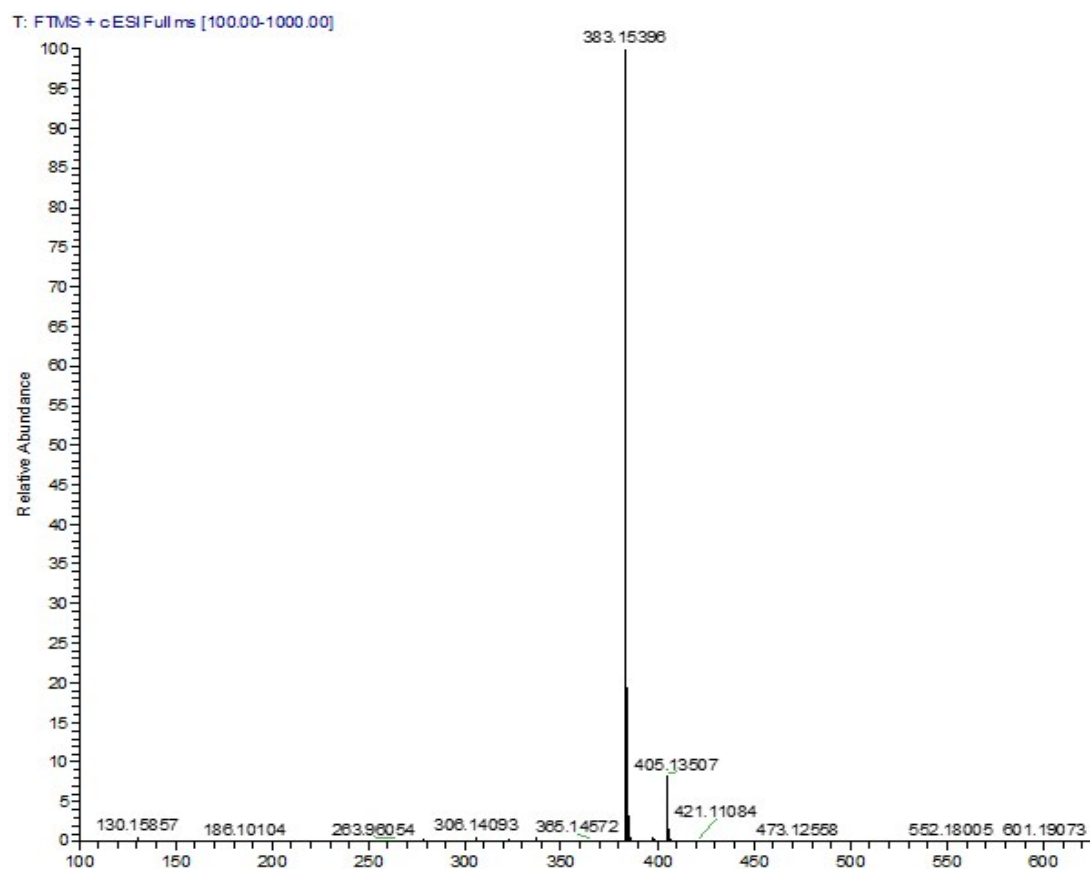


Fig. S9 ESI-HRMS spectrum of **4b**.

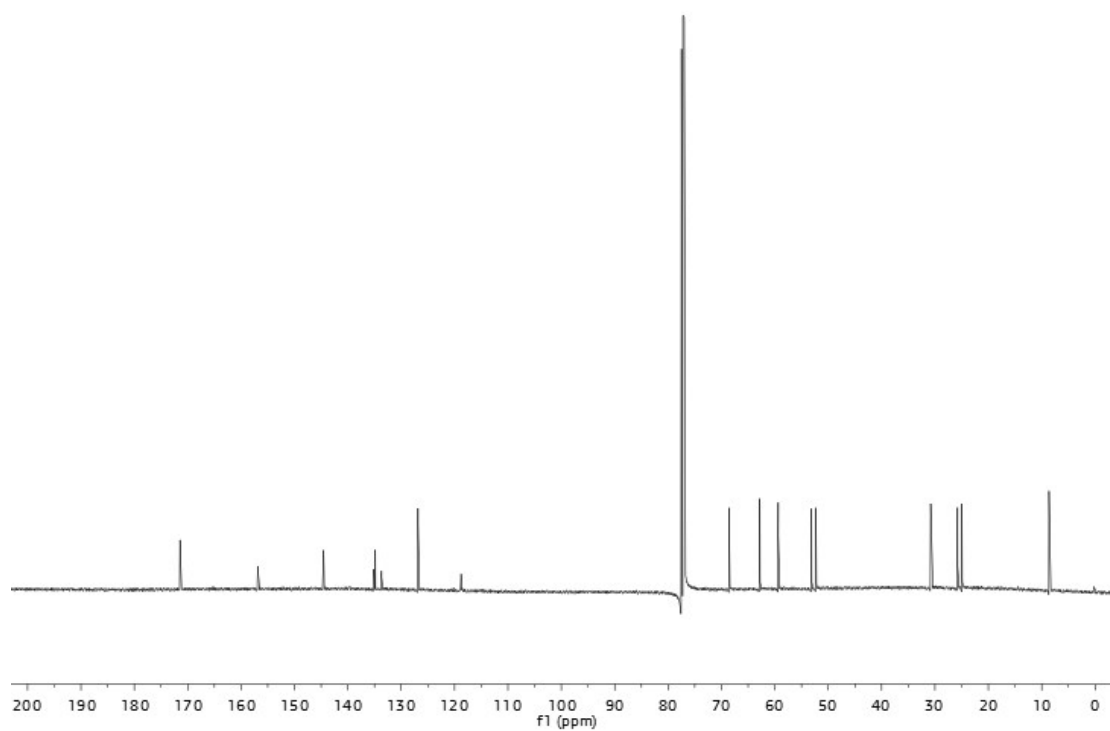
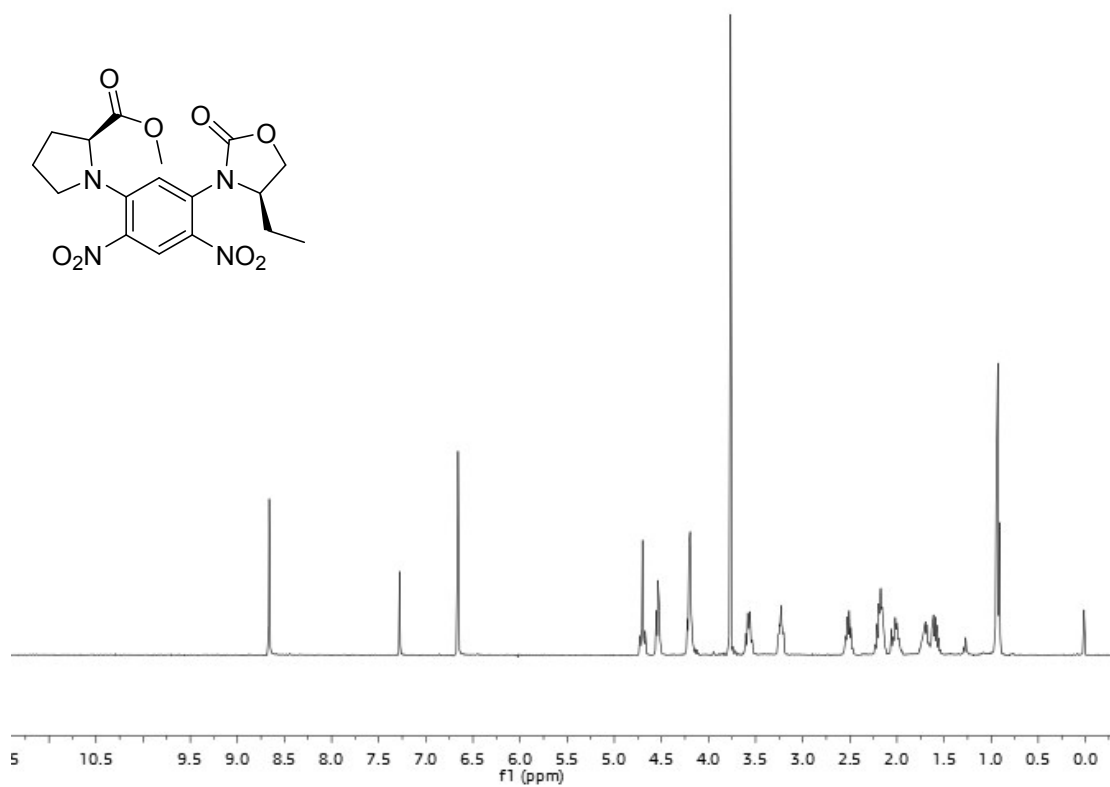


Fig. S10 ^1H and ^{13}C NMR spectra of **5a**.

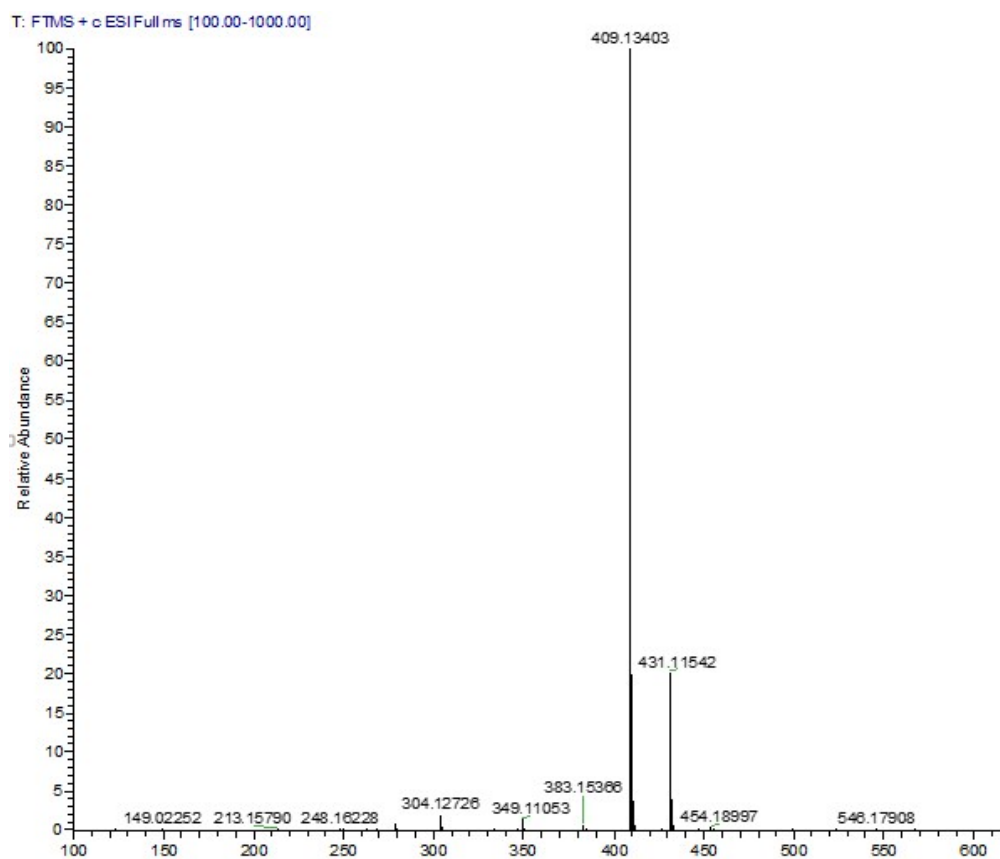


Fig. S11 ESI-HRMS spectrum of **5a**.

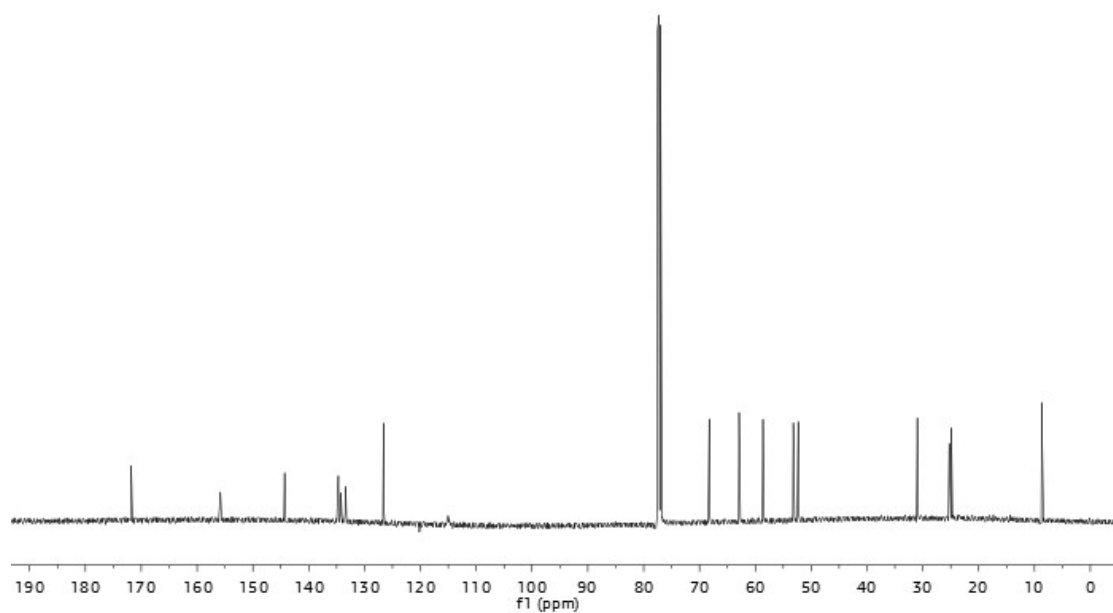
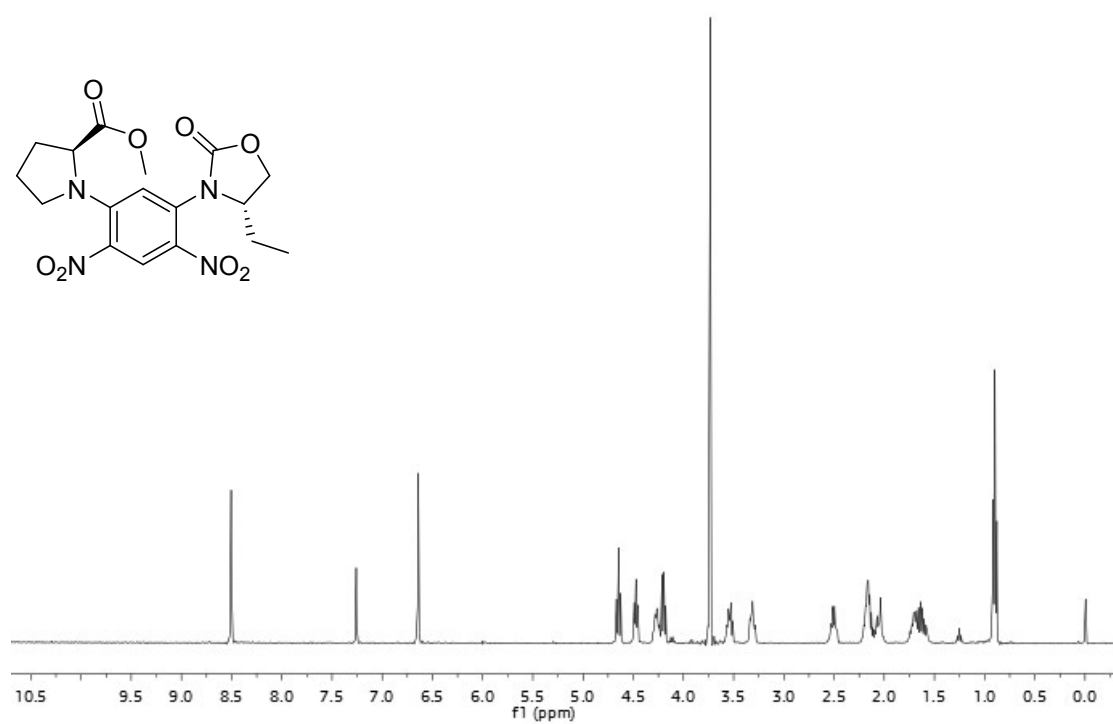


Fig. S12 ¹H and ¹³C NMR spectra of **5b**.

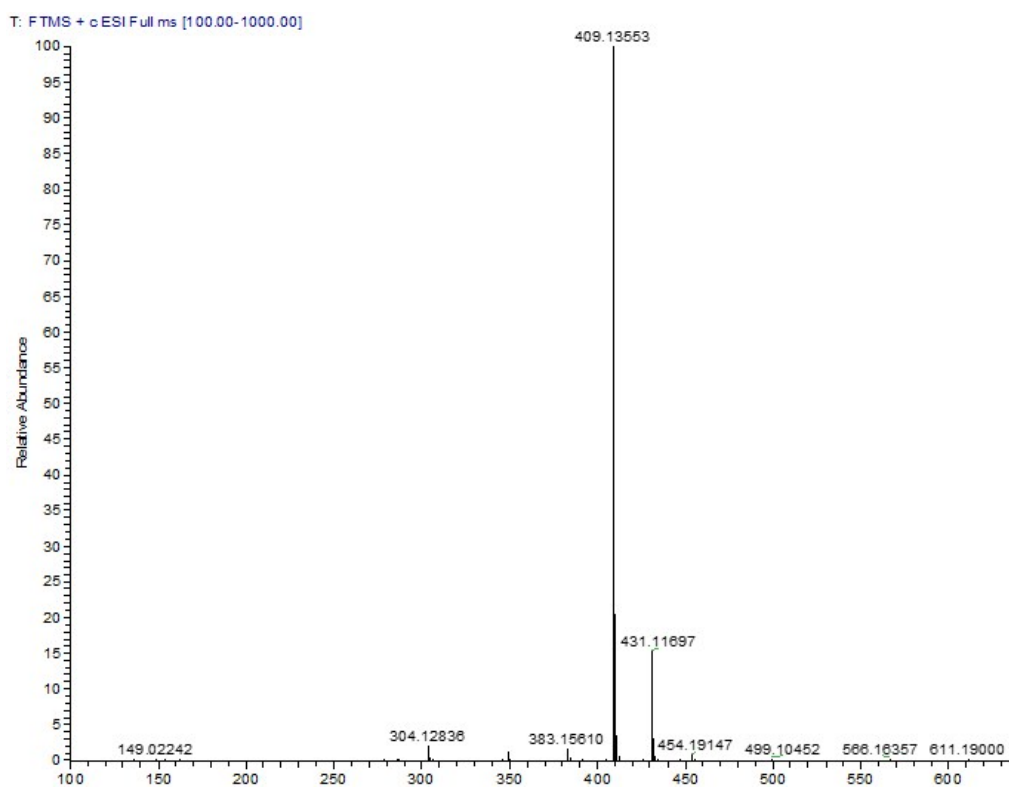


Fig. S13 ESI-HRMS spectrum of **5b**.