

## Optimization of lithium content in $\text{LiFePO}_4$ for superior electrochemical performance: Role of impurities

Kruti K. Halankar<sup>a</sup>, Balaji. P. Mandal<sup>a,e\*</sup>, Manoj K. Jangid<sup>b</sup>, A. Mukhopadhyay<sup>b</sup>,  
Sher S. Meena<sup>c</sup>, R. Acharya<sup>d,e</sup>, A. K. Tyagi<sup>a,e\*</sup>

<sup>a</sup> Chemistry Division, Bhabha Atomic Research Centre, Mumbai – 400085, India

<sup>b</sup> High Temperature and Energy Materials Laboratory, Department of Metallurgical Engineering and Materials Science, IIT Bombay, Mumbai-400076, India

<sup>c</sup> Solid State Physics Division, Bhabha Atomic Research Centre, Mumbai – 400085, India

<sup>d</sup> Radiochemistry Division, Bhabha Atomic Research Centre, Mumbai – 400085, India

<sup>e</sup> Homi Bhabha National Institute, Mumbai – 400085, India

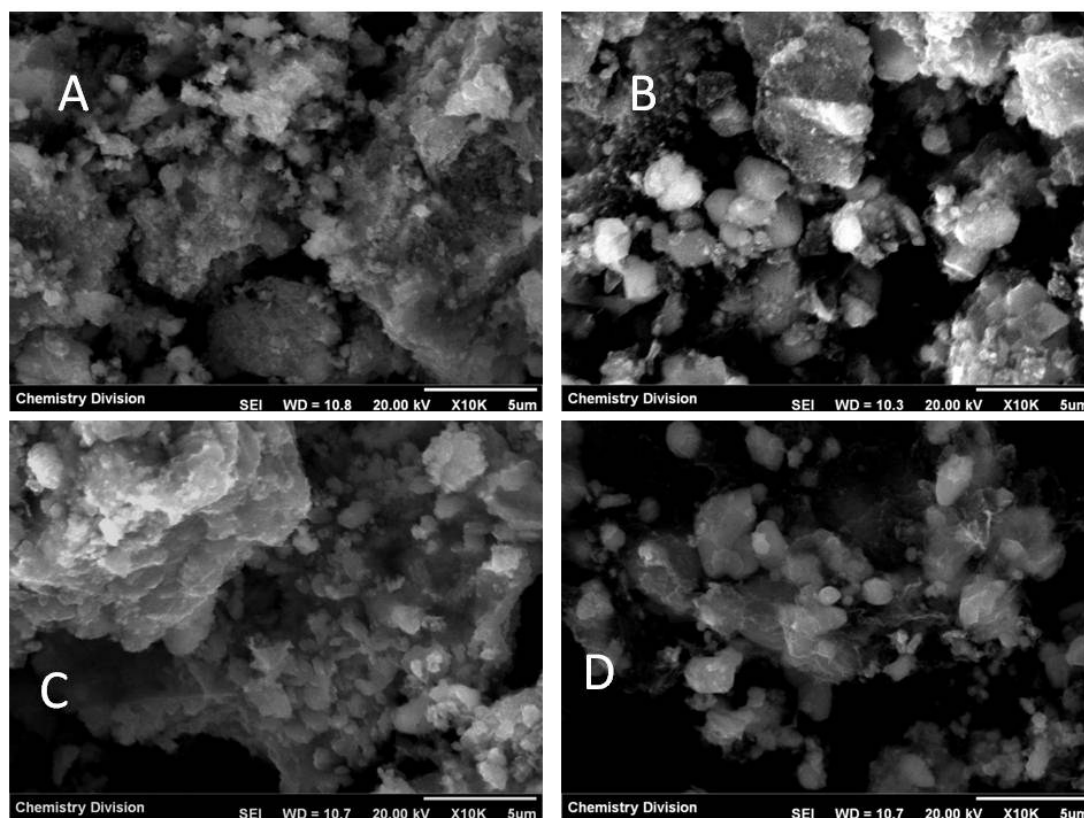


Fig. SI1. Representative SEM images obtained with (a) sample A, (b) sample B, (c) sample C and (d) sample D

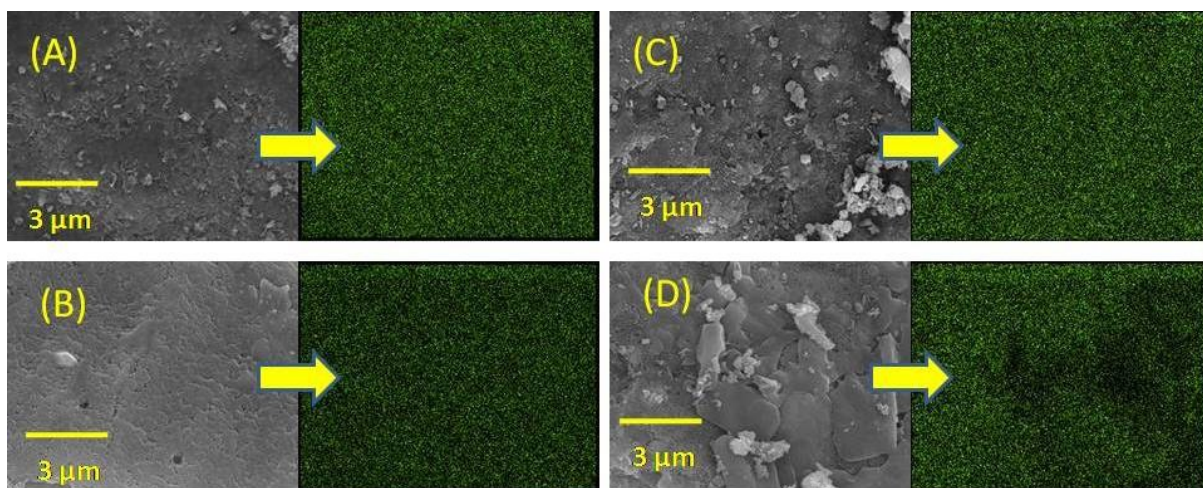


Fig. SI 2. Element maps of Fe as obtained in (a) sample A, (b) sample B, (c) sample C and (d) sample D by EDS.

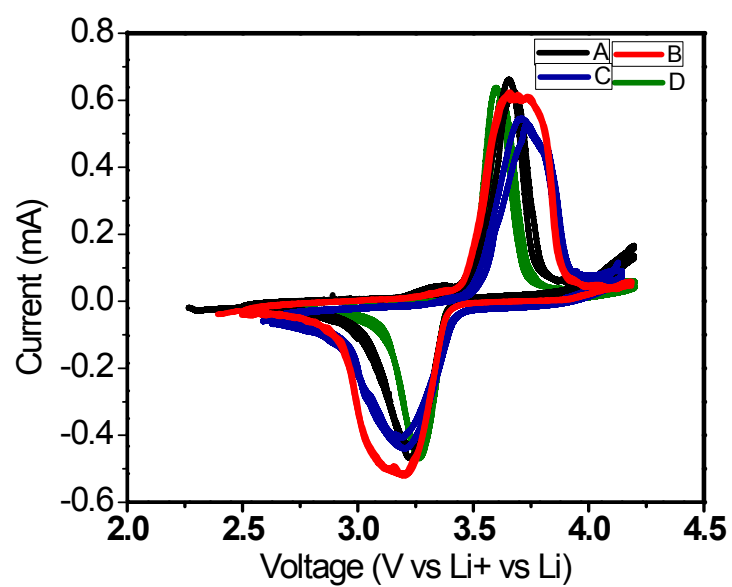


Fig. SI 3: CV plots of samples A, B, C and D.