

Supplementary

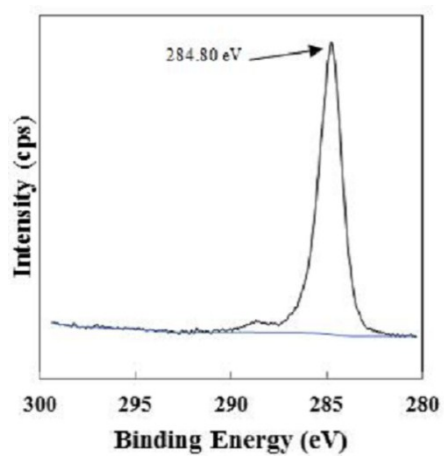


Figure S1 XPS spectra (C 1s) of Di-Fe/Ni composite.

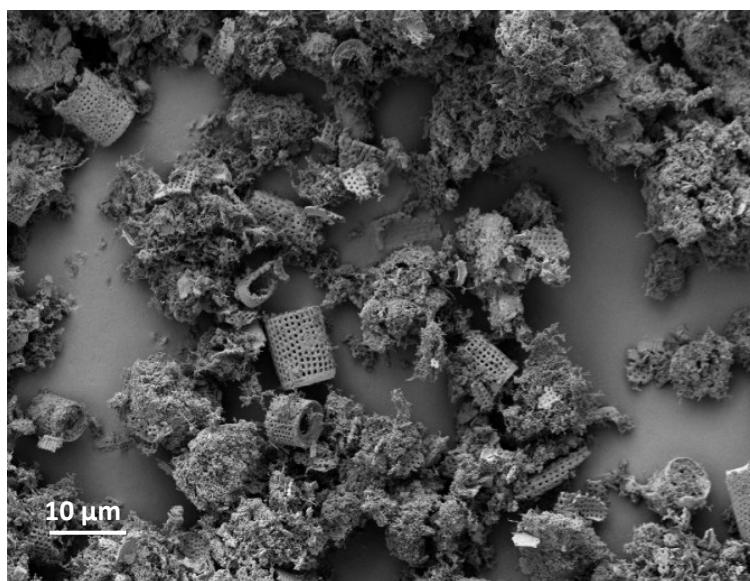


Figure S2 SEM image of Di-Fe/Ni.

Table S1 pH after reaction for Fe/Ni and Di-Fe/Ni.

Catalyst amount (g)	pH after reaction	
	Fe/Ni	Di-Fe/Ni
0.025	9.34	8.21
0.050	9.38	8.25
0.075	9.41	8.26
0.100	9.42	8.33
0.150	9.48	8.39
0.200	9.89	8.70