

Cobalt hexacyanoferrate supported on Sb-doped SnO₂ as a non-noble catalyst for oxygen evolution in acidic medium

Supporting information

Bárbara Rodríguez-García^a, Álvaro Reyes-Carmona^{a,b}, Ignacio Jiménez-Morales^b, Marta Blasco-Ahicart^a, Sara Cavaliere^b, Marc Dupont,^b Deborah Jones^b, Jacques Rozière,^b José Ramón Galán-Mascarós^{a,c,†} and Frédéric Jaouen^{b,†}

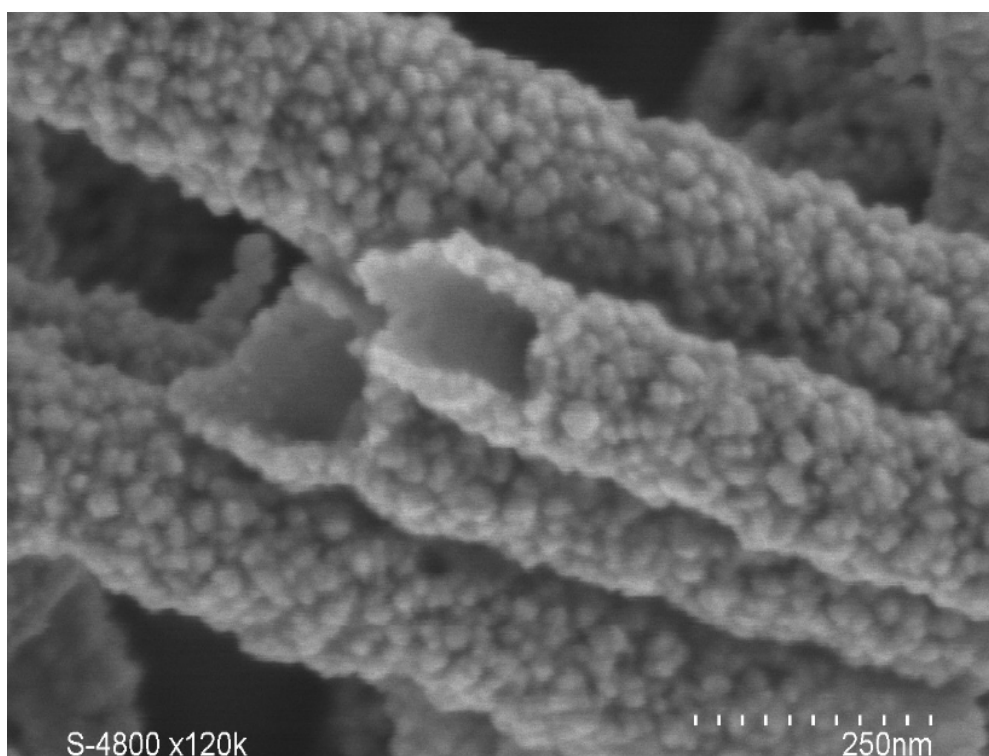


Figure S1. SEM image of ATO tubes with higher magnification

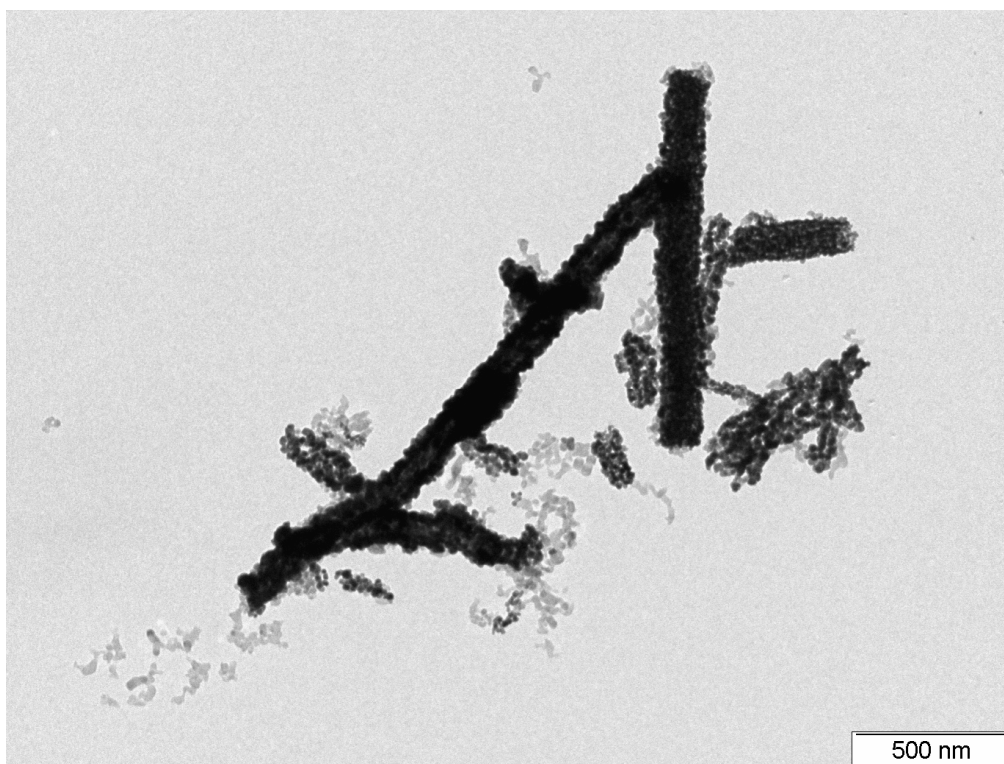


Figure S2. Lower-magnification TEM micrograph of ATO@17%CoHFe.

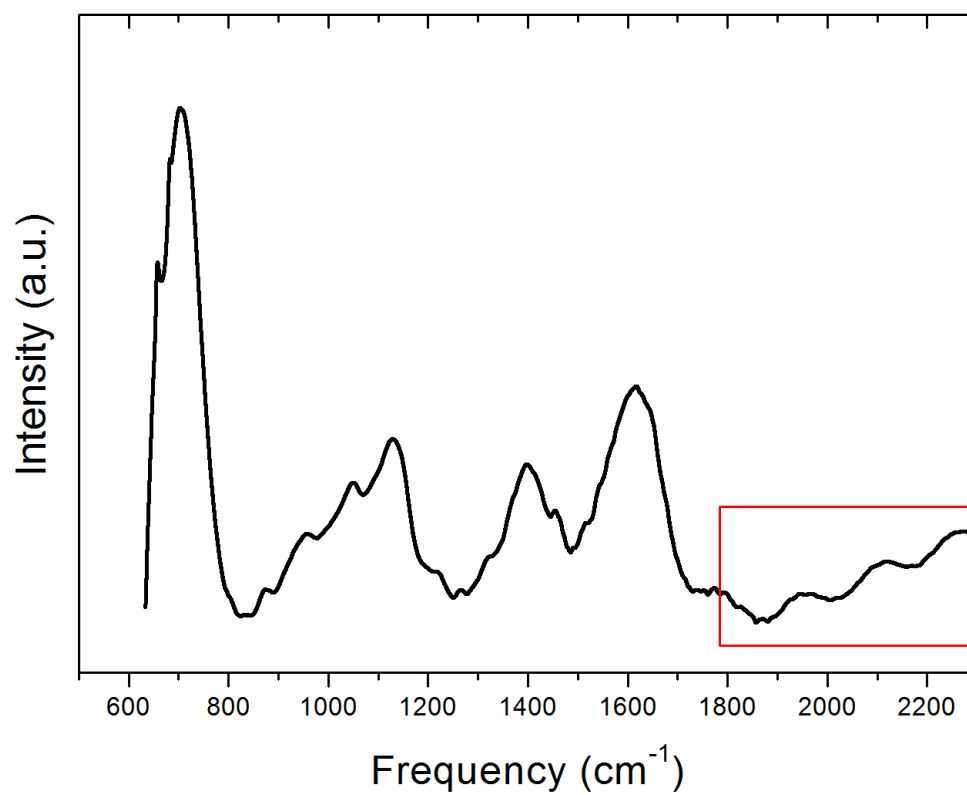


Figure S3. FT-IR spectrum of ATO. The red square shows the region used in Figure 2D where CoHFe displays intense peaks.



Figure S4. The catalyst ATO@17%CoHFe mixed with 20 wt % Nafion sprayed and transferred onto a Nafion 115 membrane at a catalyst loading of *ca* 3 mg cm⁻².

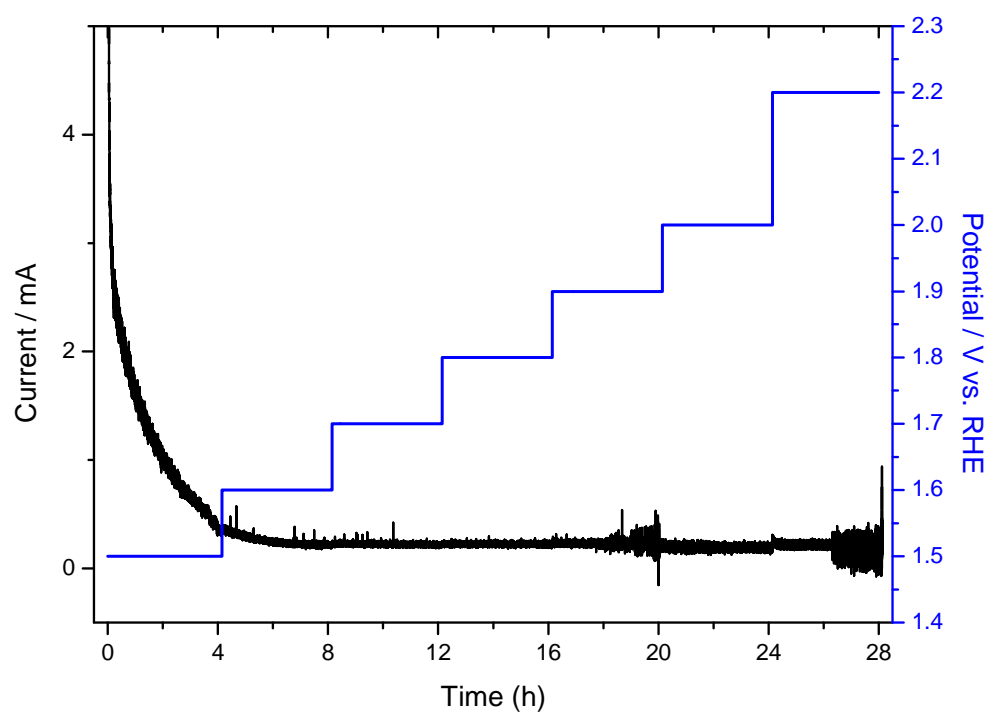


Figure S5. Oxidation current related to the anodic dissolution of ATO as a function of the electrochemical potential.