

Electronic Supplemental Information (ESI)

Title

Glycolipid-based Nanostructures with Thermal-Phase Transition Behavior Functioning as Solubilizers and Refolding Accelerators for Protein Aggregates

Authors

N. Kameta,* T. Matsuzawa, K. Yaoi, J. Fukuda and M. Masuda

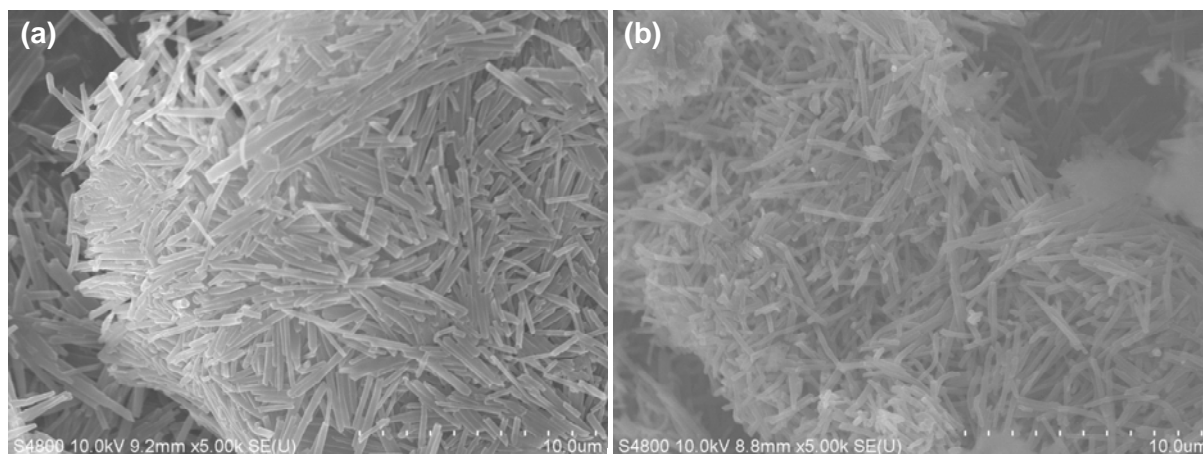


Fig. S1 SEM images of (a) 2,3-nanotubes and (b) 2,4-nanotubes after dispersion them in phosphate-buffered saline at pH 7.4 for one month.

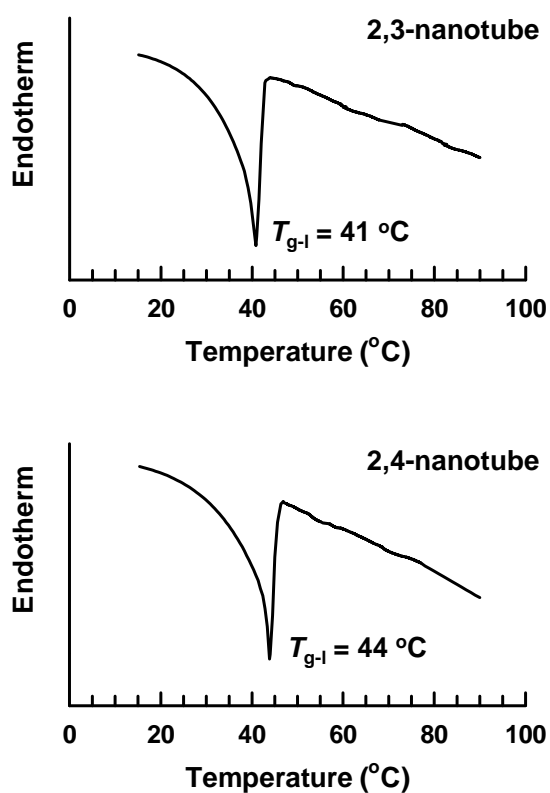


Fig. S2 DSC profiles of the 2,3-nanotube (2 : 3 = 90% : 10%) and the 2,4-nanotube (2 : 4 = 90% : 10%).

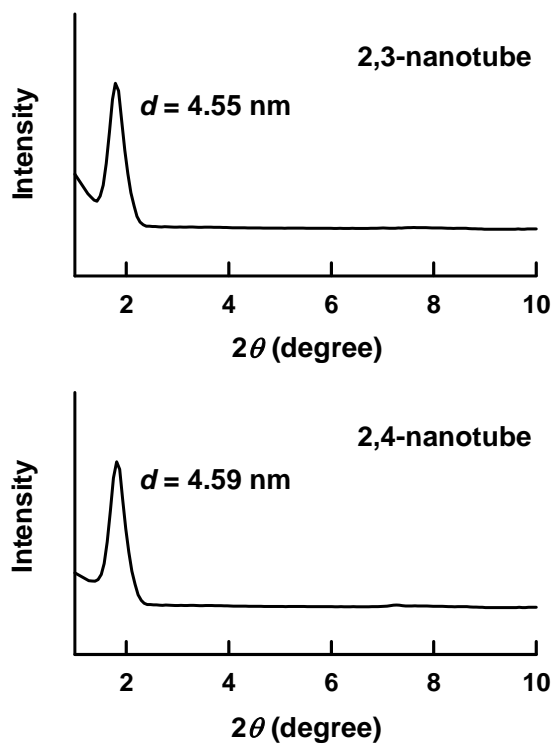


Fig. S3 XRD patterns of the 2,3-nanotube ($2 : 3 = 90\% : 10\%$) and the 2,4-nanotube ($2 : 4 = 90\% : 10\%$).

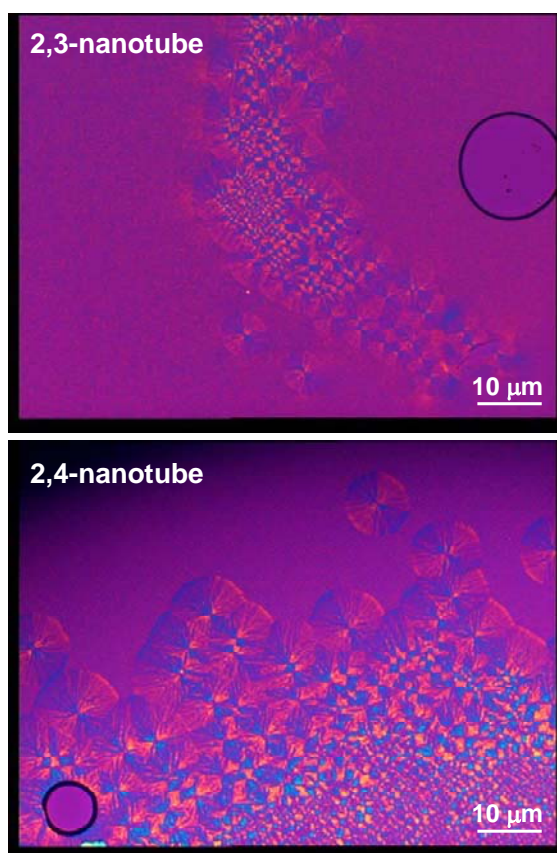


Fig. S4 Polarized microscopic images of the 2,3-nanotube ($2 : 3 = 90\% : 10\%$) and the 2,4-nanotube ($2 : 4 = 90\% : 10\%$) at $60\ ^\circ\text{C}$.

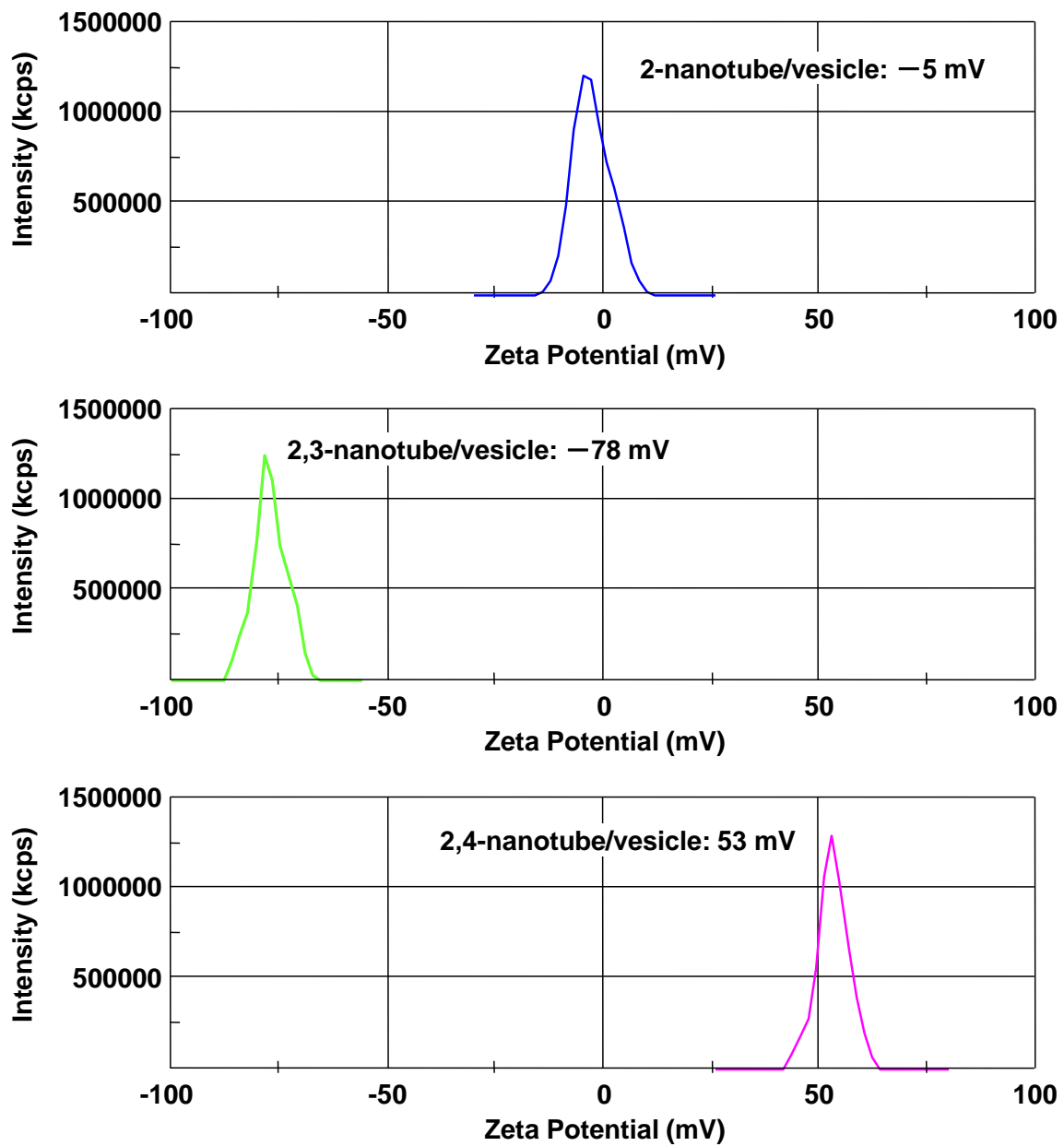


Fig. S5 Zeta potential distributions of the aqueous dispersions of the nanotubes/vesicles under neutral pH conditions.