

Supporting Information

Continuous microfiber drawing by interfacial charge complexation between anionic cellulose nanofibers and cationic chitosan

Rafael Grande, Eliane Trovatti, Antonio J. F. Carvalho*, Alessandro Gandini

The supporting information shows the video of the wet drawing process, in which the fiber is pulled from the interface of chitosan and To-CNF. The video also shows the fiber is not formed from the pure chitosan solution or To-CNF suspension.

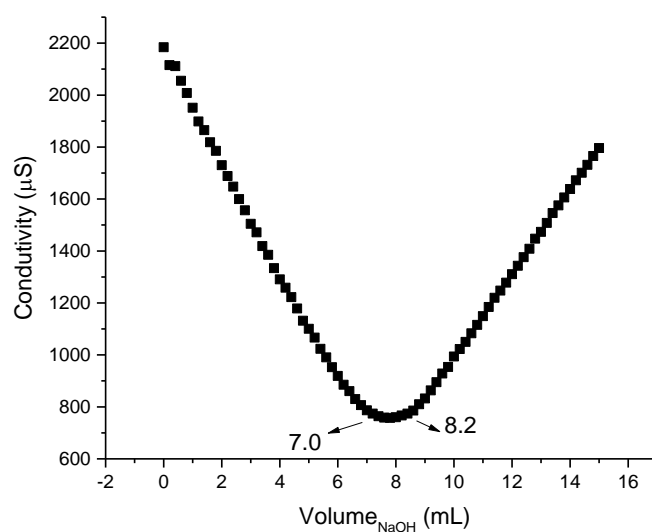


Figure S1. Conductimetric curve of To-CNF.

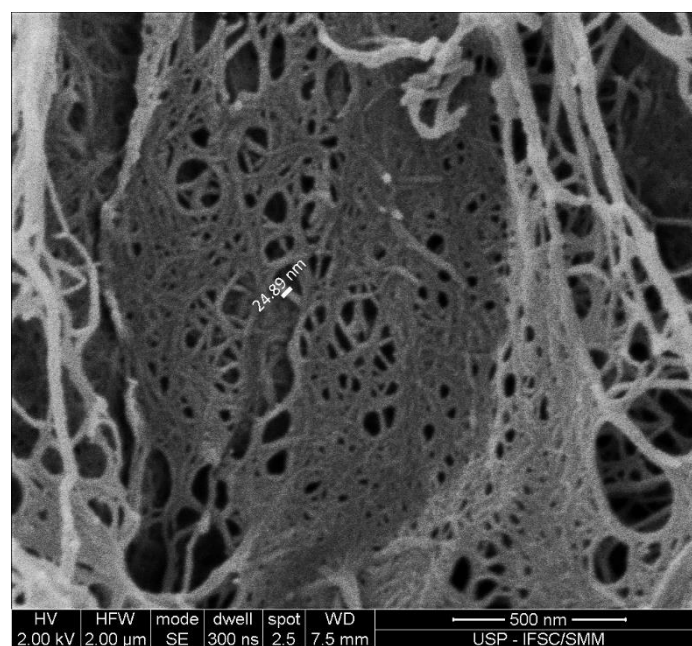


Figure S2. SEM image of To-CNF.

FTIR-ATR spectra from droplets on fibers formation

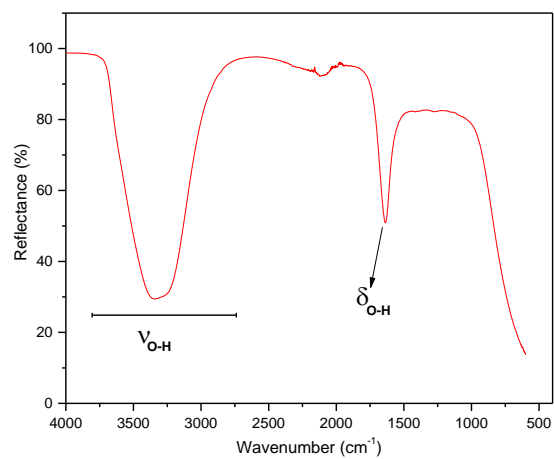


Figure S3. FTIR spectra from droplets on fibers formation

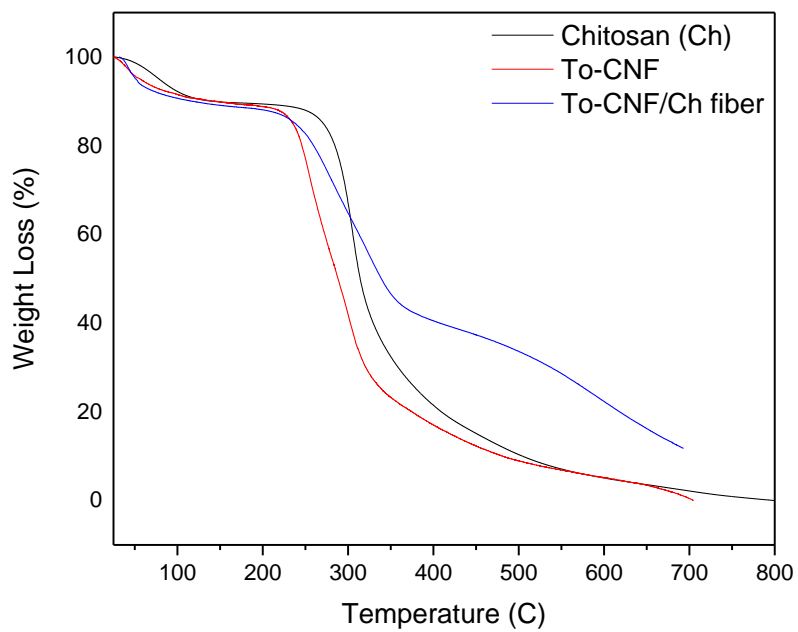


Figure S4. TGA curves of neat chitosan, To-CNF and the continuous To-CNF/Chitosan fiber.