

Tomographic Imaging of Pore Networks and Connectivity of Surfactant-Directed Mesoporous Zeolites

Seungyeop Lee,^{†,‡} Changbum Jo[‡] and Ryong Ryoo^{*,‡, §}

[†]Graduate School of Nanoscience and Technology, KAIST, Daejeon 34141, Republic of Korea

[‡]Center for Nanomaterials and Chemical Reactions, Institute for Basic Science (IBS), Daejeon 34141, Republic of Korea

[§]Department of Chemistry, KAIST, Daejeon 34141, Republic of Korea

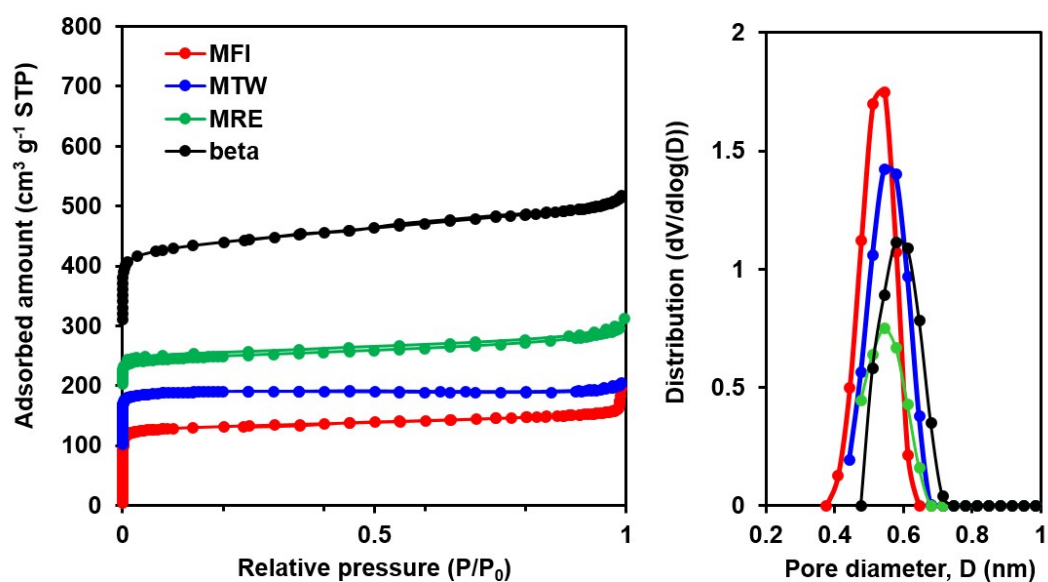


Fig. S1 Argon sorption isotherms of bulk zeolites at 87 K with offset by 100 cm³ g⁻¹ STP, and corresponding micropore size distribution.

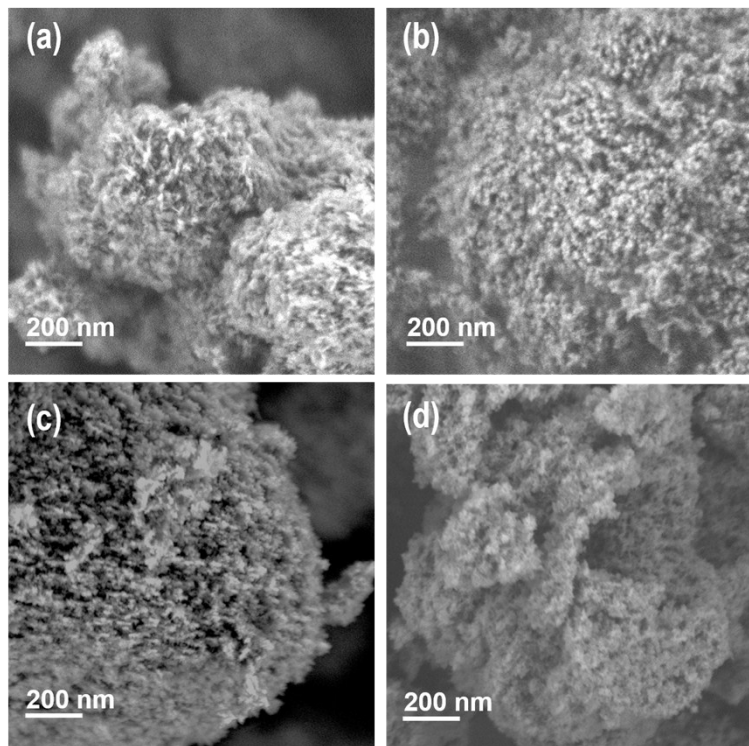


Fig. S2 Low-magnification SEM images of (a) MFI, (b) *MRE, (c) MTW and (d) beta nanosponges

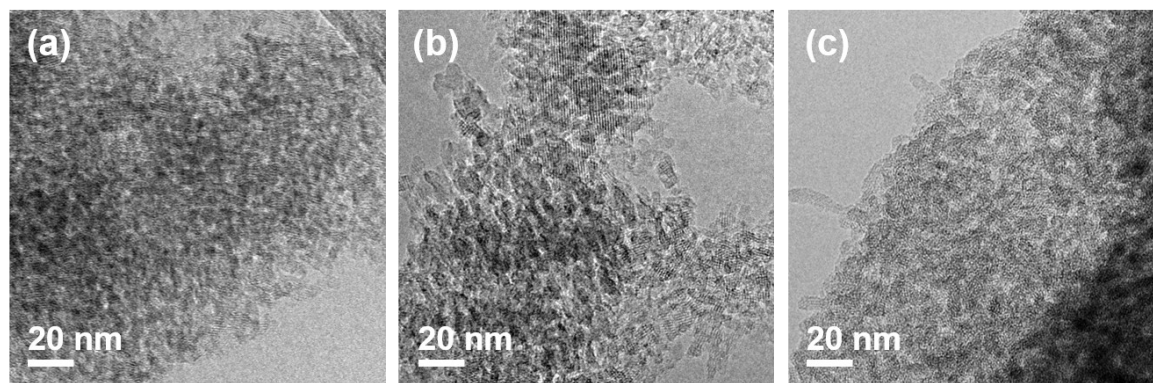


Fig. S3 High-resolution TEM images of (a) *MRE, (b) MTW, (c) beta nanosponges