

## **Supplementary Information**

### ***Roe-shaped Ni<sub>3</sub>(PO<sub>4</sub>)<sub>2</sub>/RGO/Co<sub>3</sub>(PO<sub>4</sub>)<sub>2</sub> (NRC) nanocomposite in-situ grown on Co Foam for superior supercapacitor***

Chongjun Zhao\*, Shengqi Wang, Zhaoqiang Zhu, Peiwen Ju, Chunhua Zhao, Xiuzhen Qian

*Key Laboratory for Ultrafine Materials of Ministry of Education, Shanghai Key Laboratory of Advanced*

*Polymeric Materials, School of Materials Science and Engineering, East China University of Science and*

*Technology, Shanghai 200237, P.R. China, Tel: +86-21-6425 0838, Fax: +86-21-6425 0838, E-mail:*

*chongjunzhao@ecust.edu.cn*

#### **\* Corresponding author:**

Chongjun Zhao (Prof.)

Key Laboratory for Ultrafine Materials of Ministry of Education,

Shanghai Key Laboratory of Advanced Polymeric Materials,

School of Materials Science and Engineering

East China University of Science and Technology

Shanghai 200237, P.R. China

Tel: 0086-21-6425 0838

Fax: 0086-21-6425 0838

E-mail:

*chongjunzhao@ecust.edu.cn*

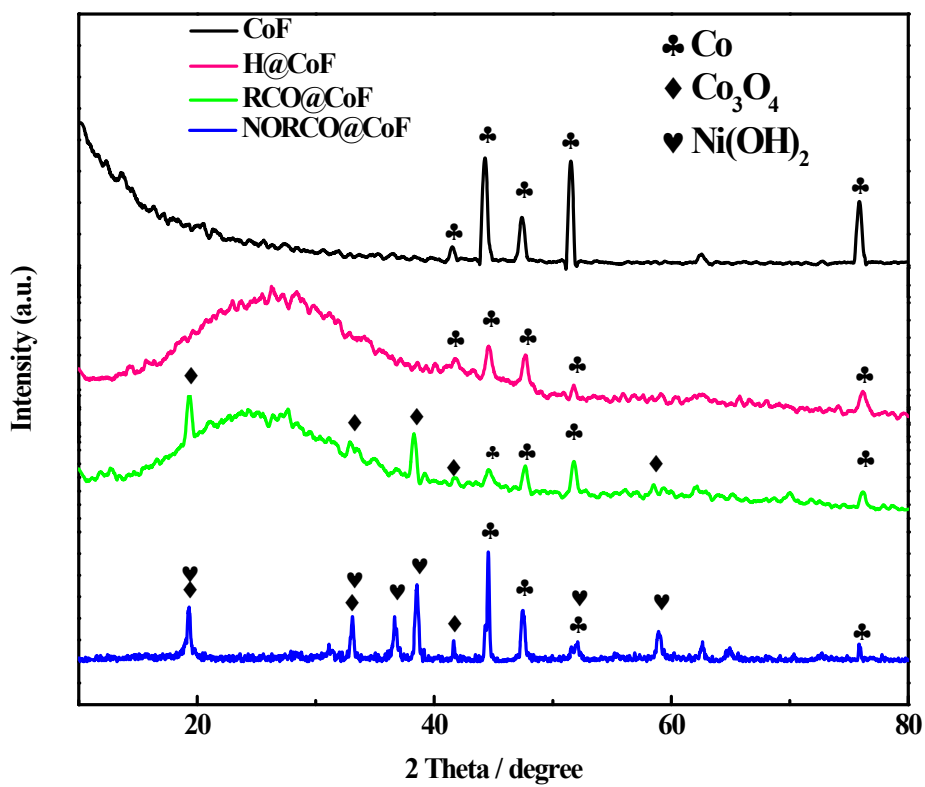
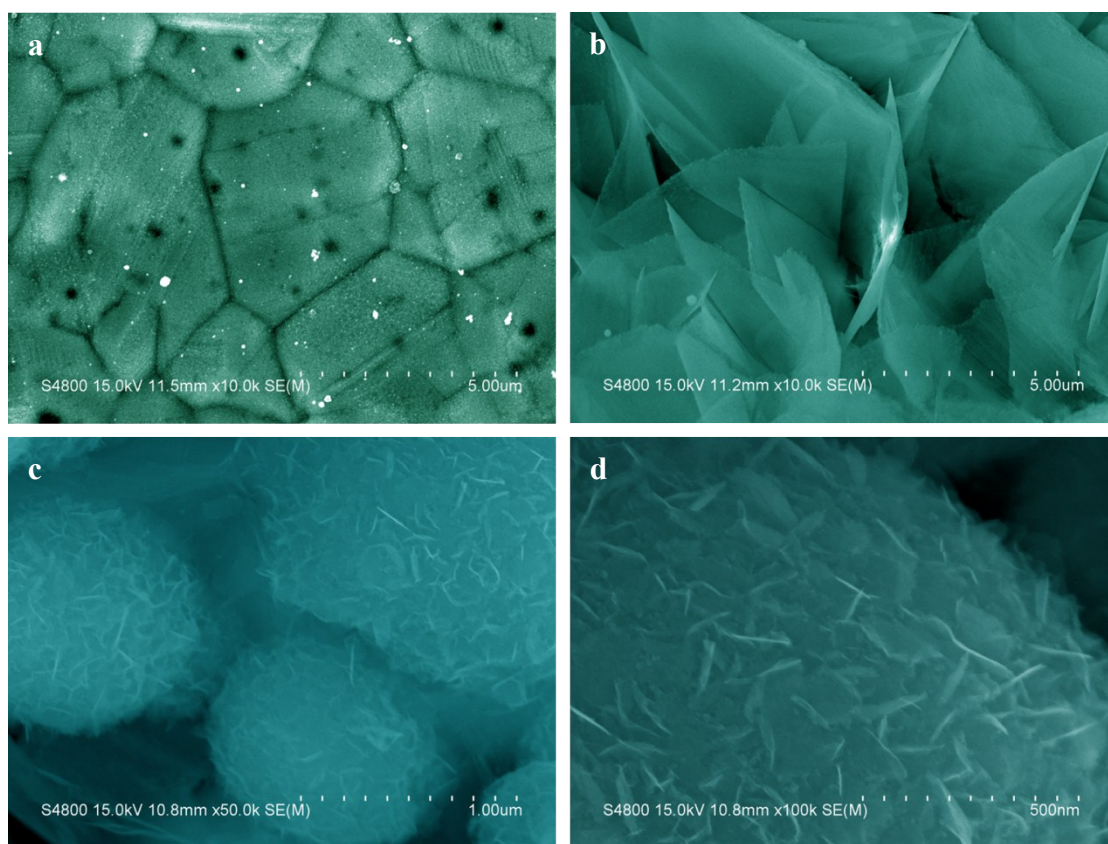
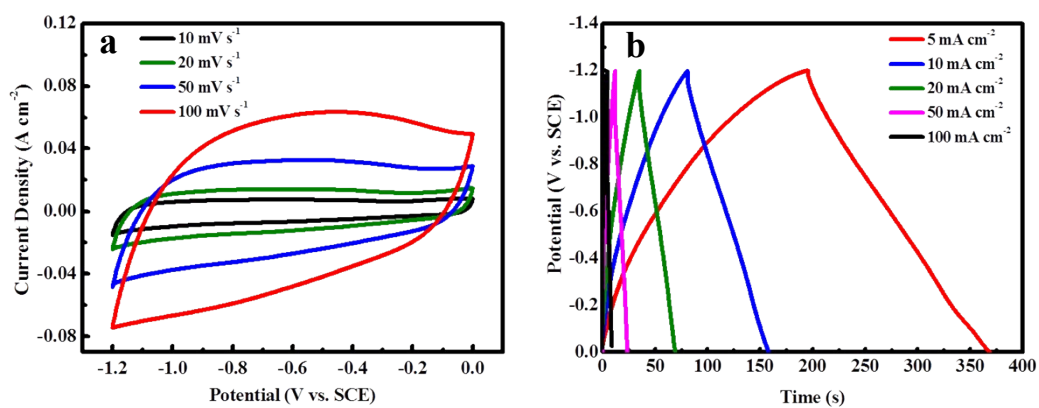


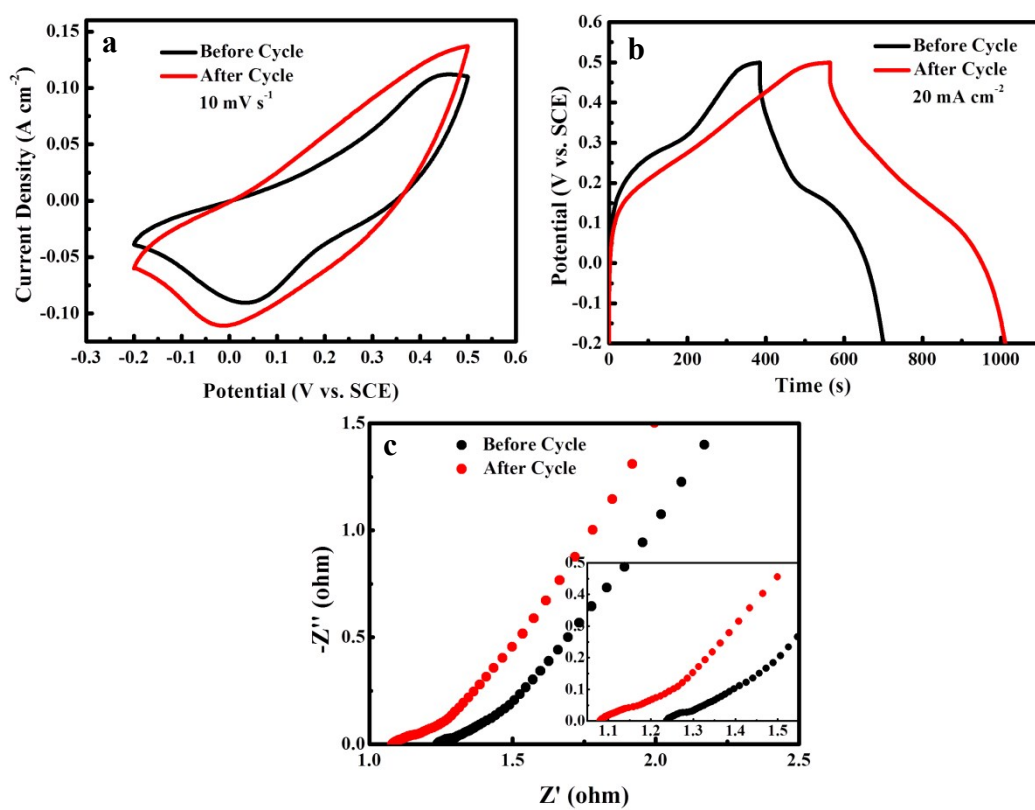
Fig.S1 XRD patterns of CoF, H@CoF, RCO@CoF and NORCO@CoF



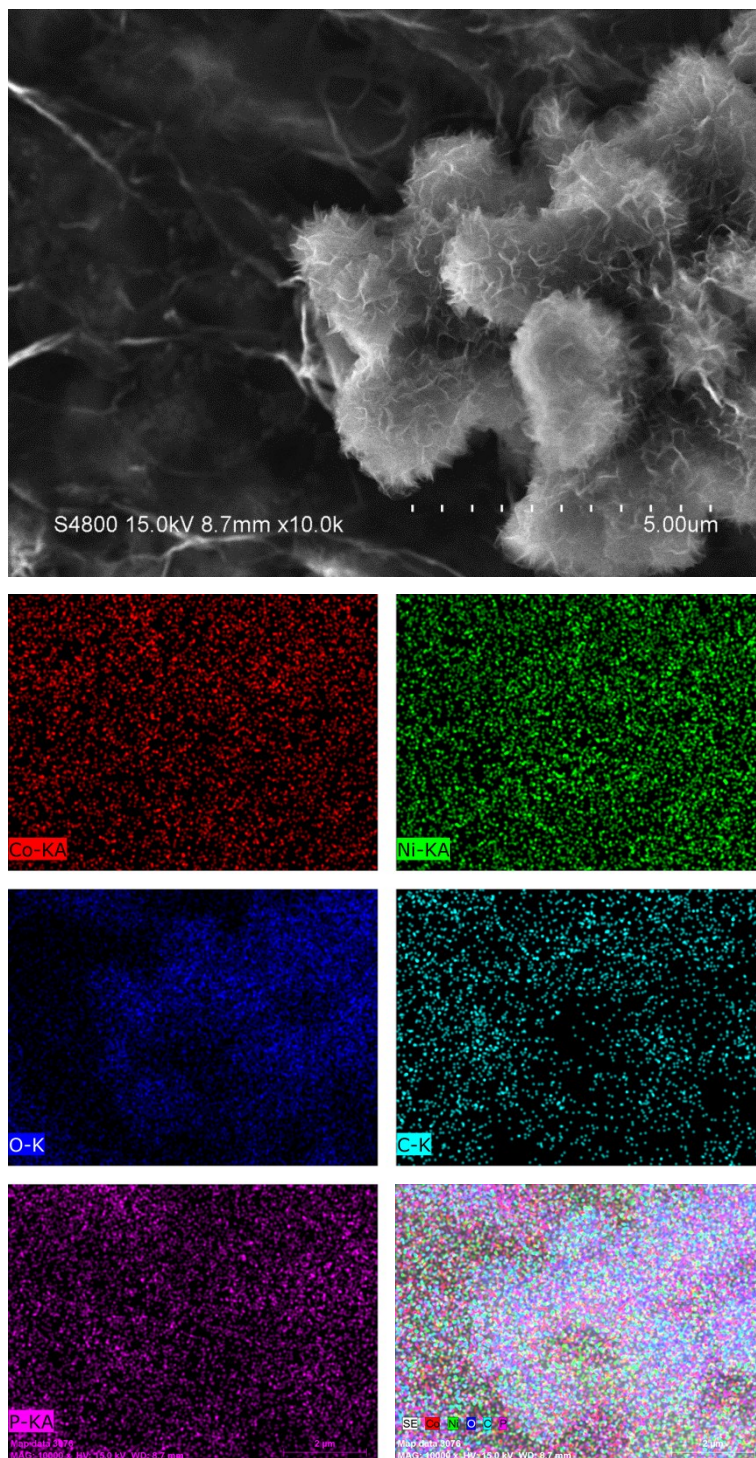
**Fig.S2** SEM images of CoF (a), RCO@CoF (b) and NRC@CoF after cyclability test (c, d)



**Fig.S3** (a) CV curves and (b) GCD curves of activated carbon (AC)



**Fig.S4** (a) CV curves, (b) GCD curves and (c) Nyquist plots of NRC@CoF nanocomposite before and after 14000 cycles.



**Fig.S5** SEM image and EDS mapping photos of NRC@CoF nanocomposite